

F.A.U. RTE.	SECTION	COUNTY	TOTAL SHEETS	SHEET NO.
9306	04-00042-01-PV	MONROE	39	9
STA. 21+49.70		TO STA. 26+50		
FED. ROAD DIST. NO.	ILLINOIS	FED. AID PROJECT		

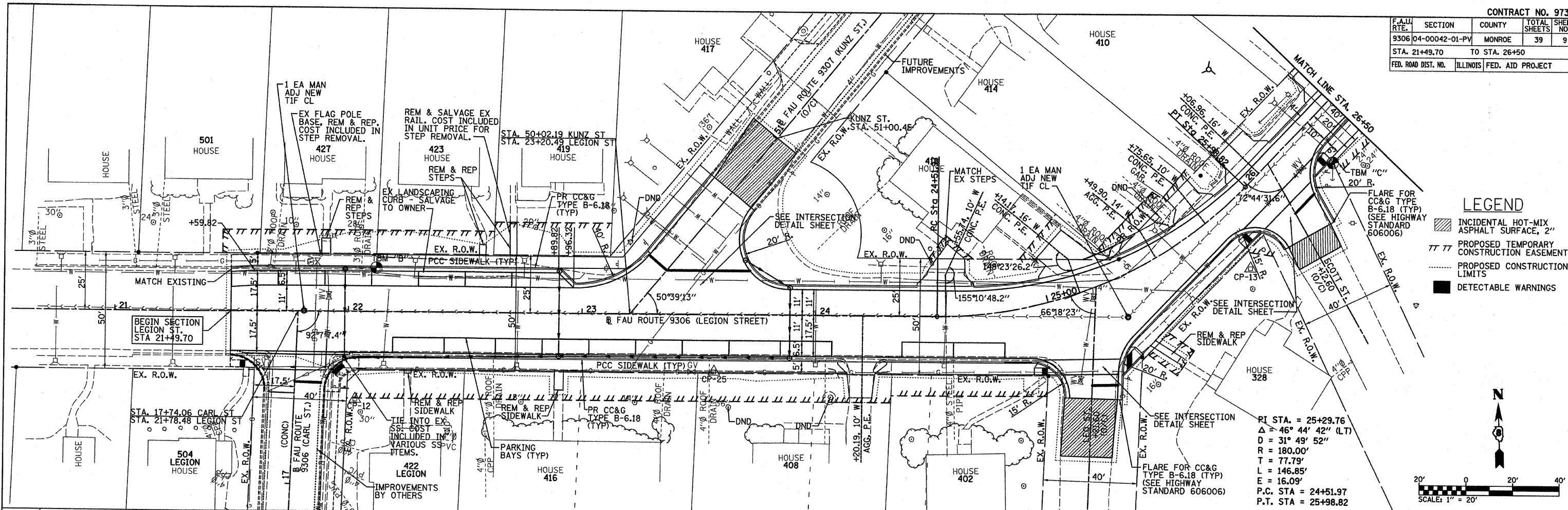
DATE	BY

PLAN	DATE
BY	
NOTED	
CHECKED	
DATE	
BY	

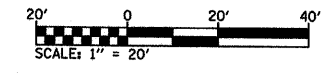
DATE	BY

PROFILE	DATE
BY	
NOTED	
CHECKED	
DATE	
BY	

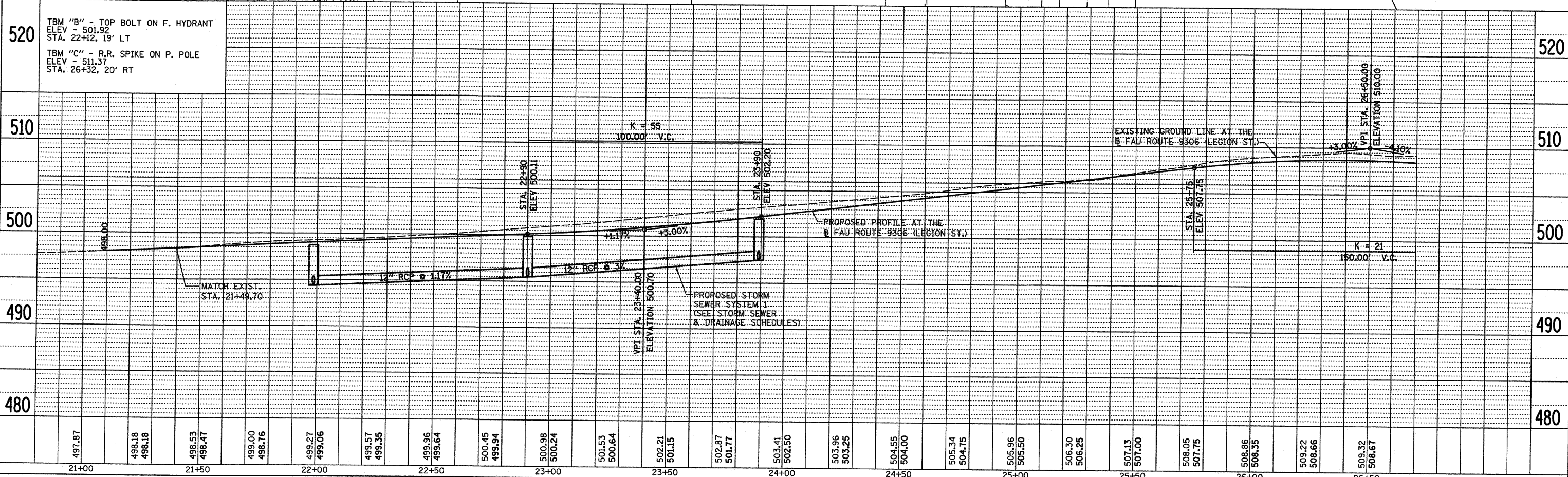
PLOT DATE = 7/14/2008
 FILE NAME = 8FILE8
 PLOT SCALE = 8SCALE8
 USER NAME = 8USER8



- LEGEND**
- ▨ INCIDENTAL HOT-MIX ASPHALT SURFACE, 2"
 - PROPOSED TEMPORARY CONSTRUCTION EASEMENT
 - - - - - PROPOSED CONSTRUCTION LIMITS
 - DETECTABLE WARNINGS



RI STA. = 25+29.76
 $\Delta = 46^\circ 44' 42''$ (LT)
 D = 31' 49' 52"
 R = 180.00'
 T = 77.79'
 L = 146.85'
 E = 16.09'
 P.C. STA = 24+51.97
 P.T. STA = 25+98.82



LEGION ST. STA. 21+49.70 TO STA. 26+50