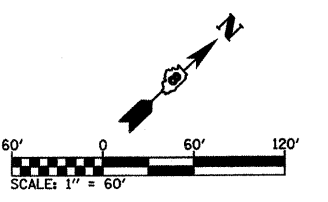


F.A.U. RTE.	SECTION	COUNTY	TOTAL SHEETS	SHEET NO.
9306	04-00042-01-PV	MONROE	39	12
STA. 21+49.70		TO STA. 36+51.06		

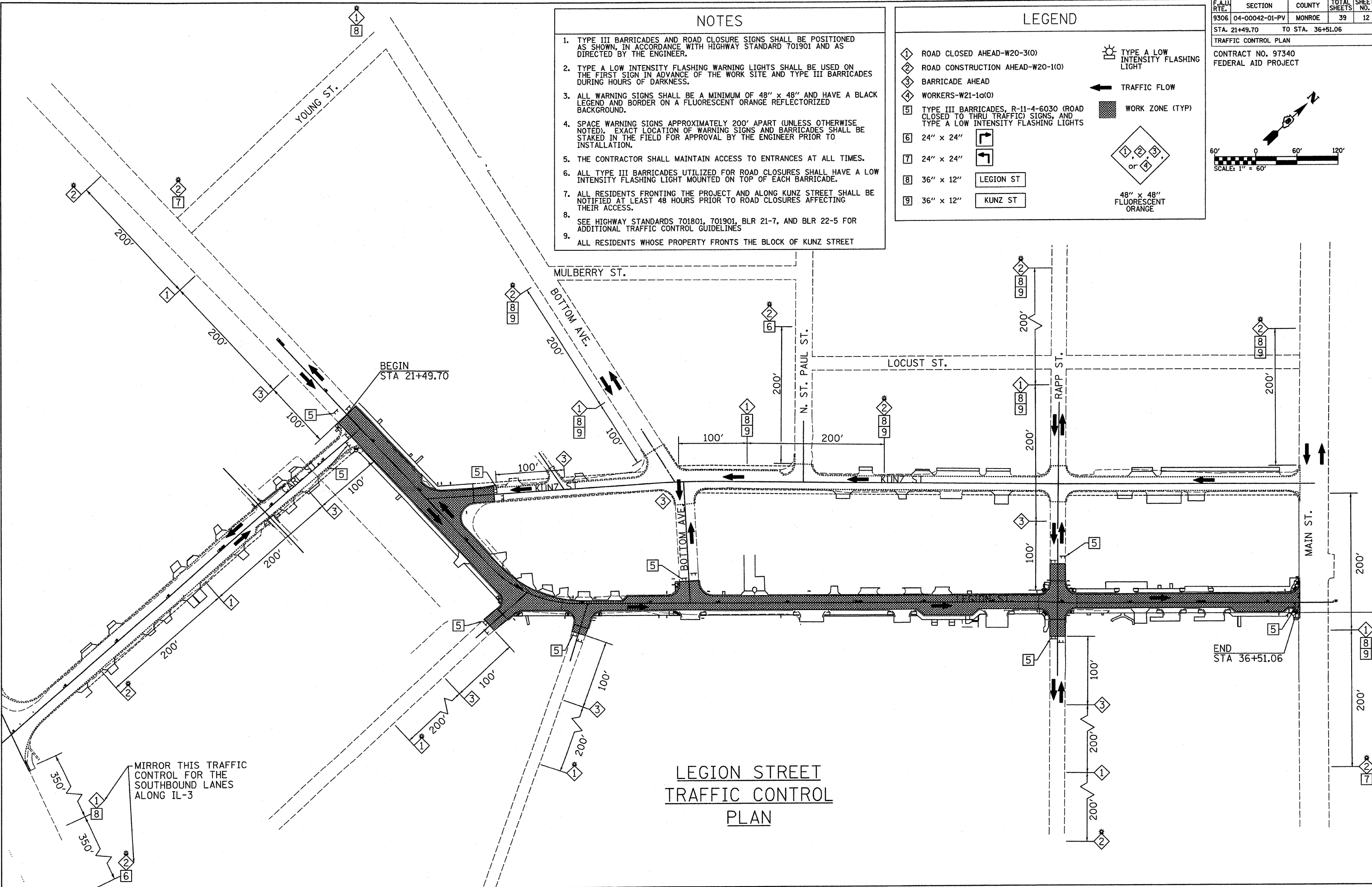
TRAFFIC CONTROL PLAN
 CONTRACT NO. 97340
 FEDERAL AID PROJECT



- ### NOTES
1. TYPE III BARRICADES AND ROAD CLOSURE SIGNS SHALL BE POSITIONED AS SHOWN, IN ACCORDANCE WITH HIGHWAY STANDARD 701901 AND AS DIRECTED BY THE ENGINEER.
 2. TYPE A LOW INTENSITY FLASHING WARNING LIGHTS SHALL BE USED ON THE FIRST SIGN IN ADVANCE OF THE WORK SITE AND TYPE III BARRICADES DURING HOURS OF DARKNESS.
 3. ALL WARNING SIGNS SHALL BE A MINIMUM OF 48" x 48" AND HAVE A BLACK LEGEND AND BORDER ON A FLUORESCENT ORANGE REFLECTORIZED BACKGROUND.
 4. SPACE WARNING SIGNS APPROXIMATELY 200' APART (UNLESS OTHERWISE NOTED). EXACT LOCATION OF WARNING SIGNS AND BARRICADES SHALL BE STAKED IN THE FIELD FOR APPROVAL BY THE ENGINEER PRIOR TO INSTALLATION.
 5. THE CONTRACTOR SHALL MAINTAIN ACCESS TO ENTRANCES AT ALL TIMES.
 6. ALL TYPE III BARRICADES UTILIZED FOR ROAD CLOSURES SHALL HAVE A LOW INTENSITY FLASHING LIGHT MOUNTED ON TOP OF EACH BARRICADE.
 7. ALL RESIDENTS FRONTING THE PROJECT AND ALONG KUNZ STREET SHALL BE NOTIFIED AT LEAST 48 HOURS PRIOR TO ROAD CLOSURES AFFECTING THEIR ACCESS.
 8. SEE HIGHWAY STANDARDS 701801, 701901, BLR 21-7, AND BLR 22-5 FOR ADDITIONAL TRAFFIC CONTROL GUIDELINES
 9. ALL RESIDENTS WHOSE PROPERTY FRONTS THE BLOCK OF KUNZ STREET

LEGEND

① ROAD CLOSED AHEAD-W20-3(O)	☀ TYPE A LOW INTENSITY FLASHING LIGHT
② ROAD CONSTRUCTION AHEAD-W20-1(O)	← TRAFFIC FLOW
③ BARRICADE AHEAD	■ WORK ZONE (TYP)
④ WORKERS-W21-1a(O)	① ② ③ OR ④
⑤ TYPE III BARRICADES, R-11-4-6030 (ROAD CLOSED TO THRU TRAFFIC) SIGNS, AND TYPE A LOW INTENSITY FLASHING LIGHTS	48" x 48" FLUORESCENT ORANGE
⑥ 24" x 24" [Right Turn Arrow]	
⑦ 24" x 24" [Left Turn Arrow]	
⑧ 36" x 12" [Legion St]	
⑨ 36" x 12" [Kunz St]	



PLOT DATE = 7/18/2008
 FILE NAME = #FILE#
 PLOT SCALE = #SCALE#
 USER NAME = #USER#