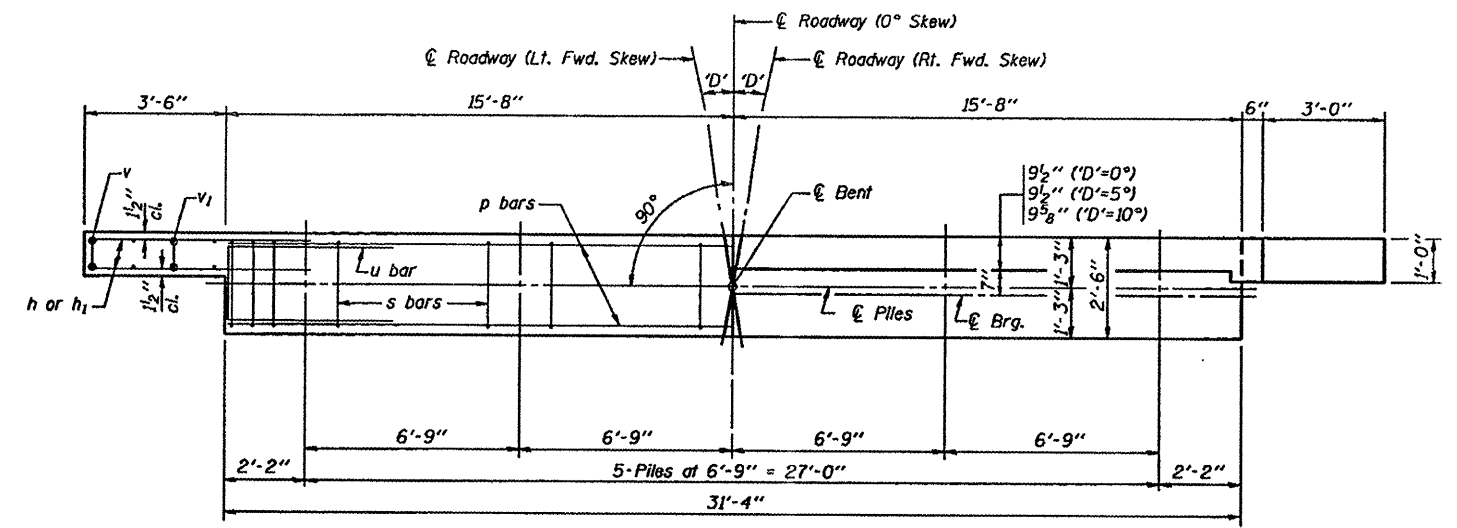


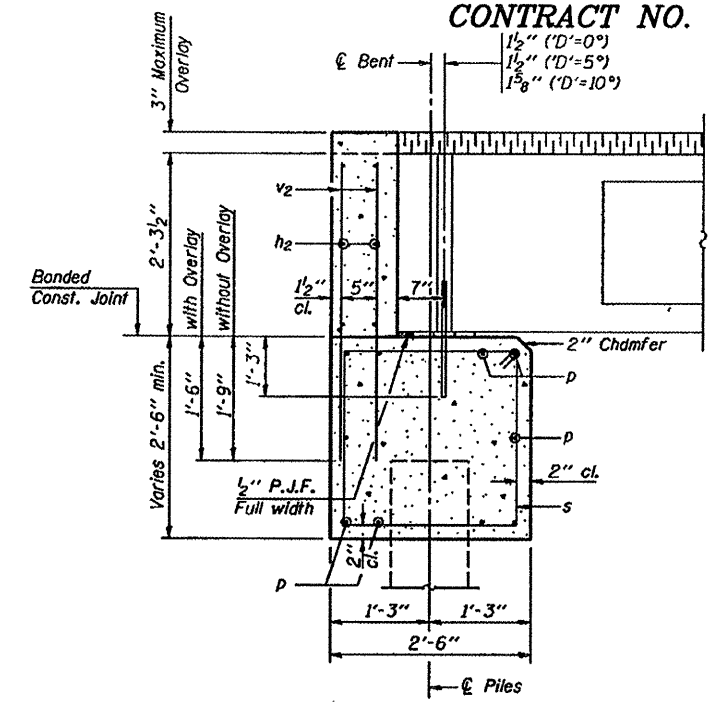
RTE. NO.	SECTION	COUNTY	TOTAL SHEETS	SHEET NO.
TR 67	06-18111-00-BR	MADISON	20	11

**CONTRACT NO. 97356**

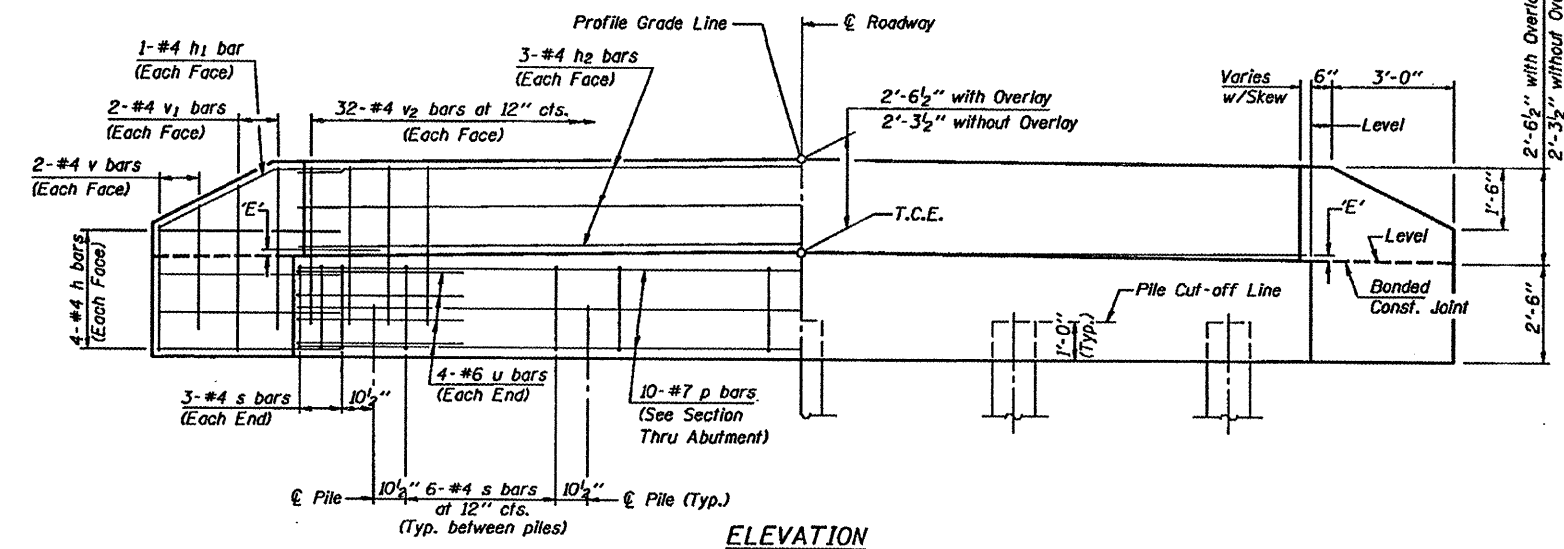
1 1/2" ('D'=0°)  
1 1/2" ('D'=5°)  
1 5/8" ('D'=10°)



**PLAN**  
(D=Designated Skew Angle)



**SECTION THRU ABUTMENT**  
(At Right Angles)



**ELEVATION**

**DIMENSION 'E'**

GRADE	'D'=0°		'D'=5°		'D'=10°	
	UPGRADE END	DOWNGRADE END	UPGRADE END	DOWNGRADE END	UPGRADE END	DOWNGRADE END
0%	2 7/8"	2 7/8"	2 7/8"	2 7/8"	2 7/8"	2 7/8"
Over 0% to 1%	2 7/8"	2 7/8"	2 7/8"	3"	2 3/4"	3"
Over 1% to 2%	2 7/8"	2 7/8"	2 5/8"	3 1/2"	2 3/8"	3 3/8"
Over 2% to 3%	2 7/8"	2 7/8"	2 1/2"	3 3/4"	2 1/8"	3 3/4"
Over 3% to 4%	2 7/8"	2 7/8"	2 3/8"	3 1/2"	1 3/4"	4"

**NOTES**

- The Backwall and the portion of the Wingwalls above the bonded construction joint shall be cast against the in-place beam.
- Reinforcement bars shall conform to the requirements of A.A.S.H.T.O. M-31 or M-322, Grade 60.
- Space reinforcement in cap to miss anchor bolts.

**MAXIMUM PILE LOADS**

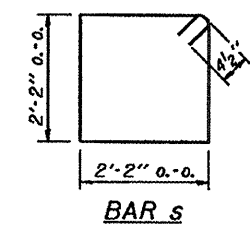
SPAN	TONS
40'	32
50'	36
60'	41

**DESIGN STRESSES**

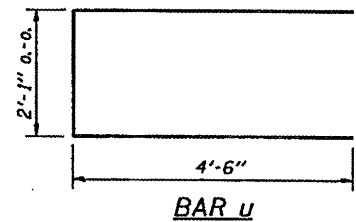
f'c = 3,500 psi  
fy = 60,000 psi

**BILL OF MATERIAL FOR ONE ABUTMENT**

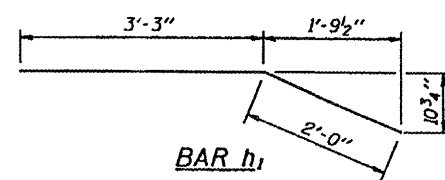
Bar No.	Size	Length	Shape
h	16 #4	5'-0"	—
h1	4 #4	5'-3"	—
h2	6 #4	31'-0"	—
p	10 #7	31'-0"	—
s	30 #4	9'-5"	□
u	8 #6	11'-1"	—
v	8 #4	3'-2"	—
v1	8 #4	4'-2"	—
v2	64 #4	3'-11"	—
Concrete Structures			11.1 Cu. Yds.
Reinforcement Bars			1350 Lb.



**BAR s**



**BAR u**



**BAR h1**

P.P.C. DECK BEAMS PILE BENT ABUTMENT		
30' RDWY.	27" BMS.	'D'=0°, 5° OR 10°
STANDARD CA-3027-10		

Illinois Department of Transportation  
PASSED APRIL 3, 2005  
Theresa J. Nematy  
Engineer of Bridge Design  
APPROVED APRIL 4, 2005  
Ralph E. Beckman  
Engineer of Bridges and Structures