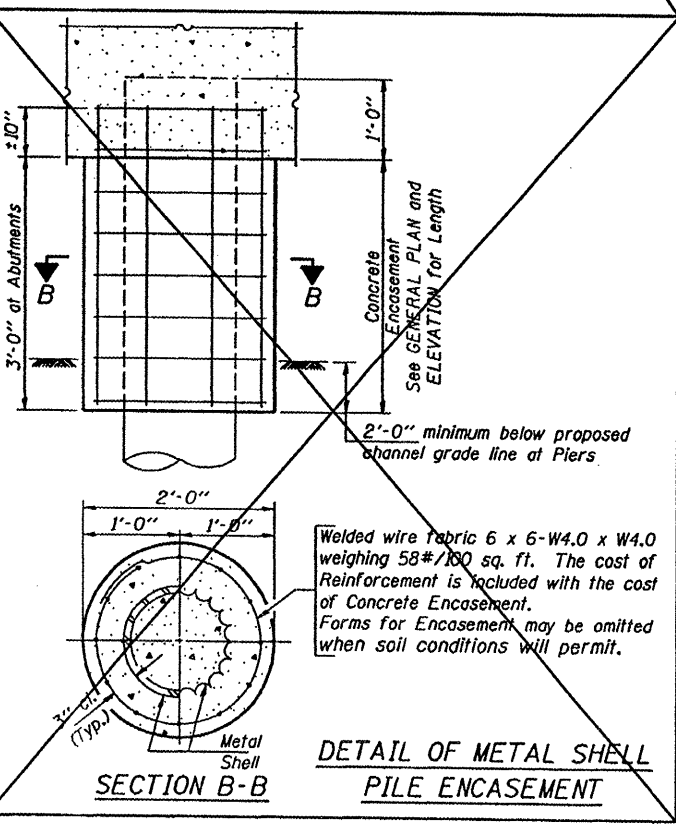
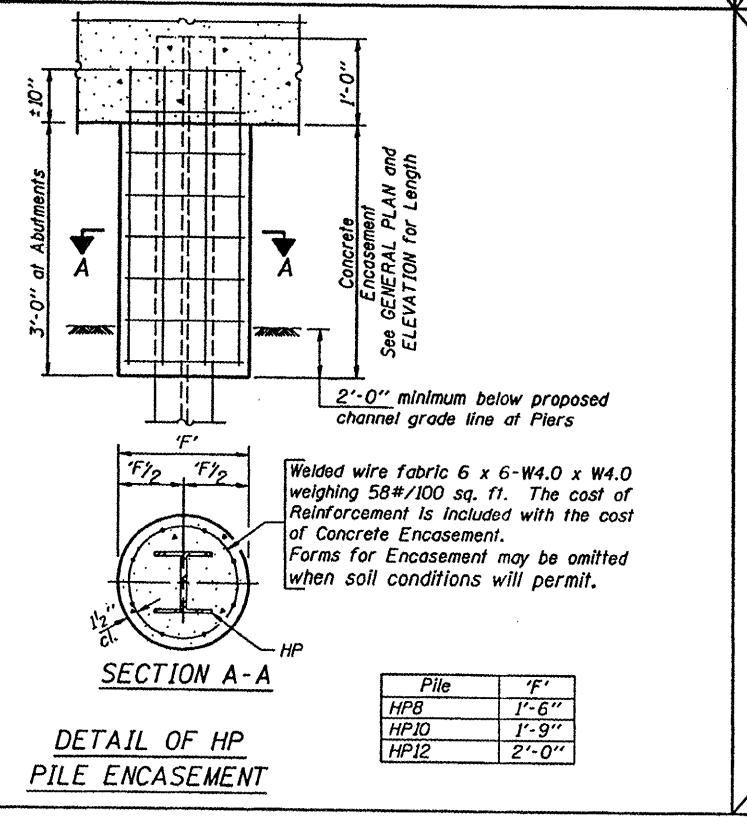
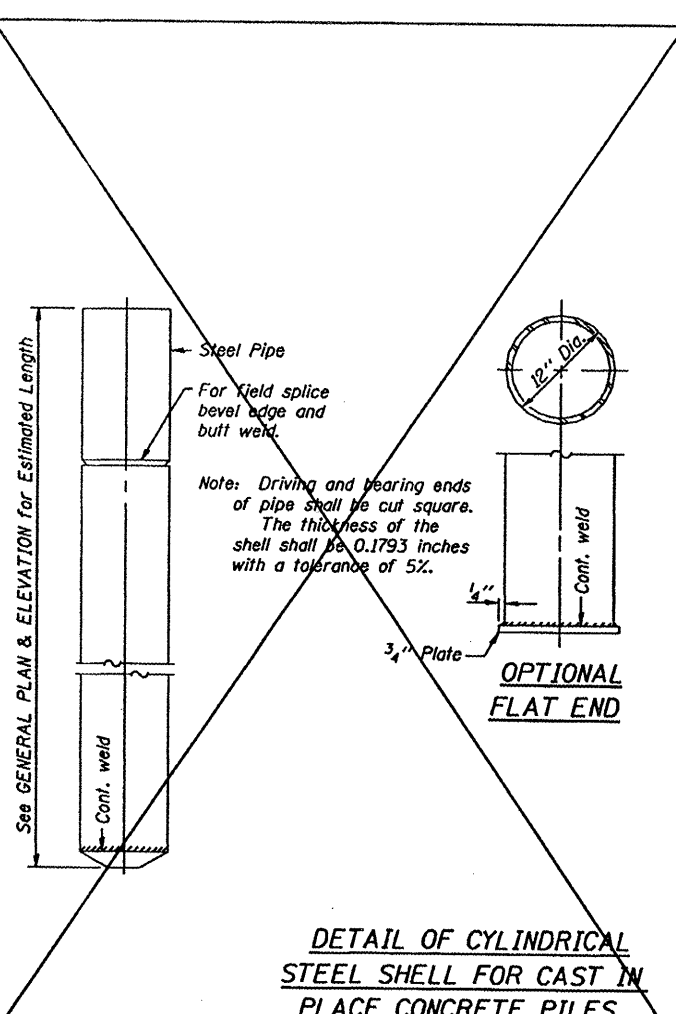
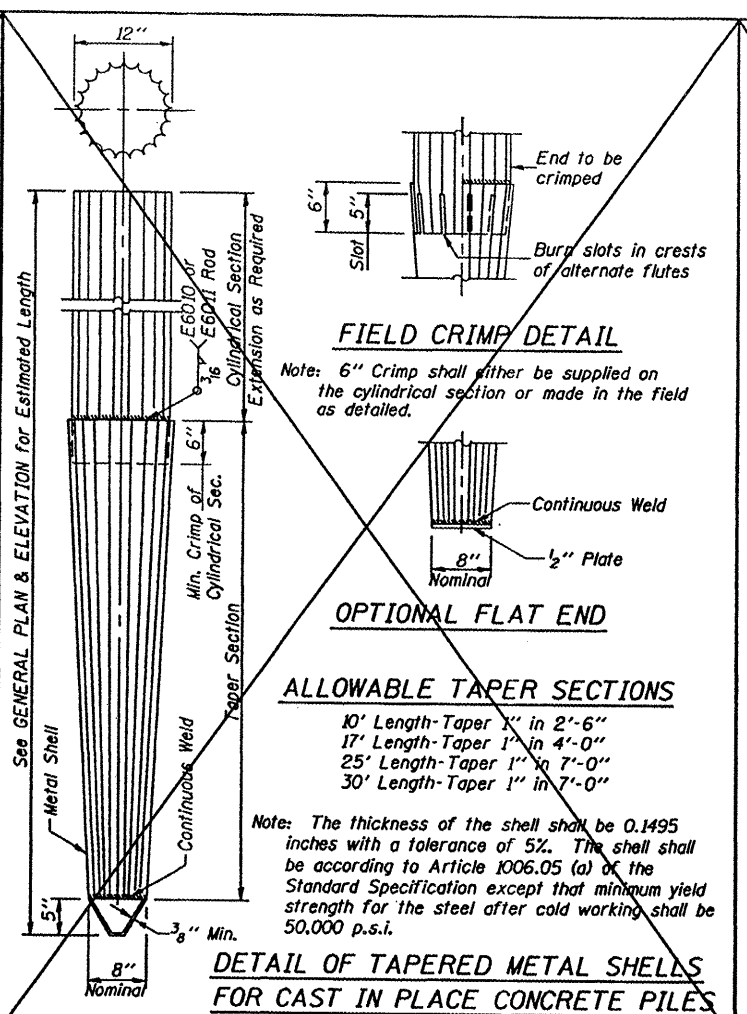
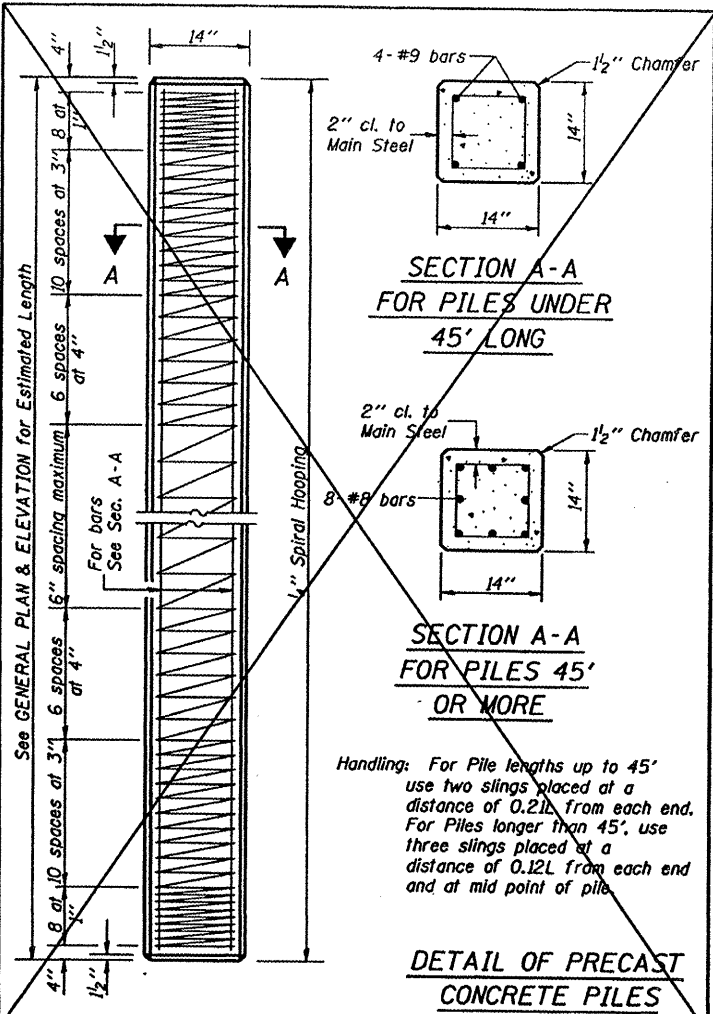


CONTRACT NO. 97356



**QUANTITIES/FT. OF ENCASEMENT (STEEL PILES)**

Pile Size	Item	Quantity
HP8	Concrete Encasement	0.063 C.Y.
HP10	Concrete Encasement	0.086 C.Y.
HP12	Concrete Encasement	0.112 C.Y.

**(METAL SHELL PILES)**

Pile Size	Item	Quantity
12" Dia.	Concrete Encasement	0.087 C.Y.

PILE DETAILS
STANDARD CX-1

Illinois Department of Transportation

PASSED FEBRUARY 1, 2000  
Thomas J. Demers  
Engineer of Bridge Design

APPROVED FEBRUARY 1, 2000  
Ralph E. Carlson  
Engineer of Bridges and Structures