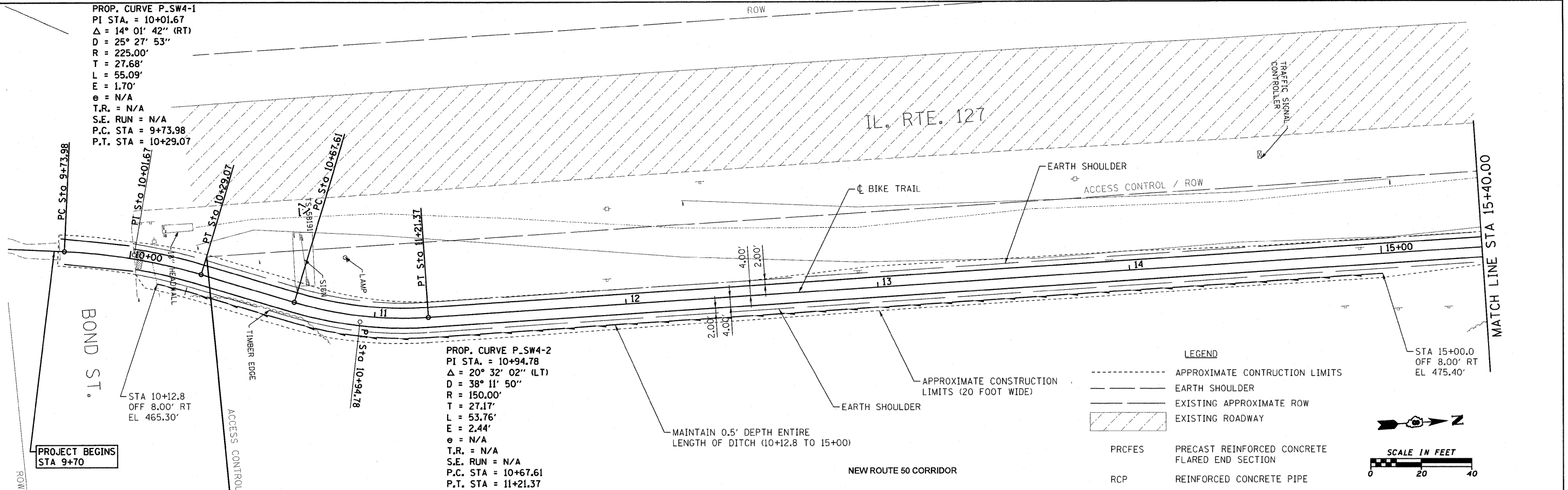
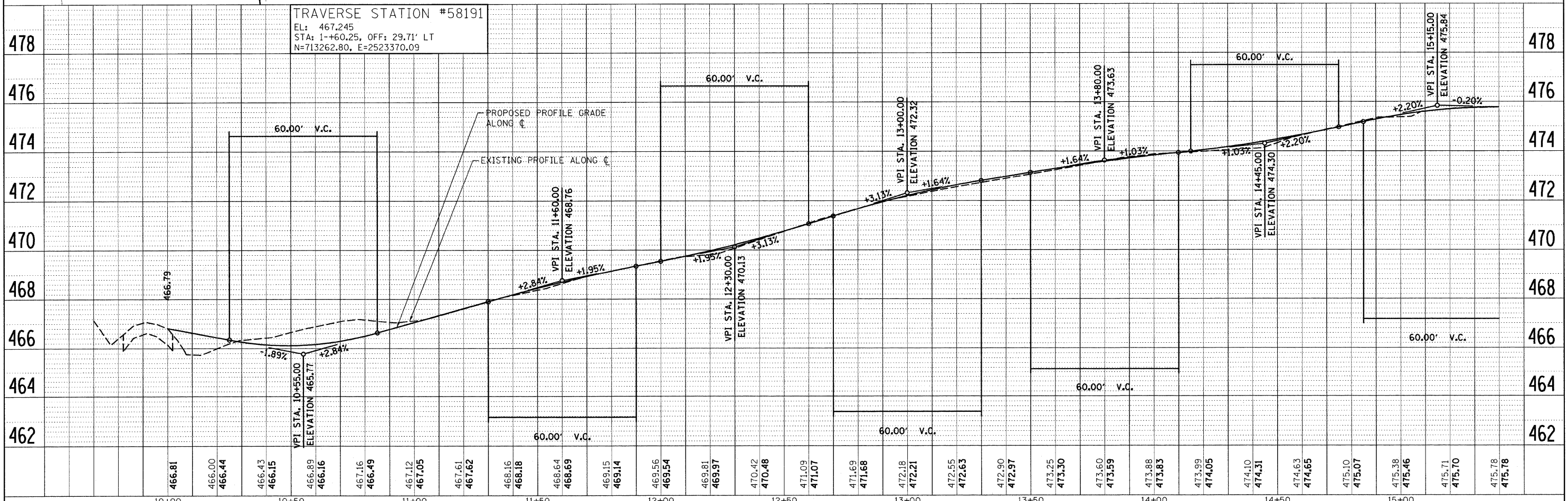
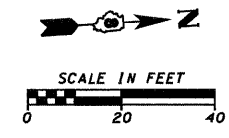


PROP. CURVE P-SW4-1
 PI STA. = 10+01.67
 $\Delta = 14^\circ 01' 42''$ (RT)
 $D = 25^\circ 27' 53''$
 $R = 225.00'$
 $T = 27.68'$
 $L = 55.09'$
 $E = 1.70'$
 $e = N/A$
 $T.R. = N/A$
 $S.E. RUN = N/A$
 $P.C. STA = 9+73.98$
 $P.T. STA = 10+29.07$

PROP. CURVE P-SW4-2
 PI STA. = 10+94.78
 $\Delta = 20^\circ 32' 02''$ (LT)
 $D = 38^\circ 11' 50''$
 $R = 150.00'$
 $T = 27.17'$
 $L = 53.76'$
 $E = 2.44'$
 $e = N/A$
 $T.R. = N/A$
 $S.E. RUN = N/A$
 $P.C. STA = 10+67.61$
 $P.T. STA = 11+21.37$



LEGEND
 - - - - - APPROXIMATE CONSTRUCTION LIMITS
 - - - - - EARTH SHOULDER
 - - - - - EXISTING APPROXIMATE ROW
 - - - - - EXISTING ROADWAY
 PRCFES PRECAST REINFORCED CONCRETE FLARED END SECTION
 RCP REINFORCED CONCRETE PIPE



FILE NAME = H:\5819\NC_PP_5819_1.dgn	USER NAME = _USERDESCR_	DESIGNED - DLD	REVISED -	STATE OF ILLINOIS DEPARTMENT OF TRANSPORTATION	BIKE TRAIL - PLAN AND PROFILE	F.A. RTE.	SECTION	COUNTY	TOTAL SHEETS	SHEET NO.
	PLOT SCALE = 20,0000' / IN.	DRAWN - KOJ	REVISED -			06-00025-00-BT	CLINTON	54	8	
	PLOT DATE = 7/14/2008	CHECKED -	REVISED -			CONTRACT NO. 97357				
		DATE -	REVISED -			FED. ROAD DIST. NO. (ILLINOIS) FED. AID PROJECT				

PLAN	SURVEYED	BY	DATE
NOTE BOOK	ALIGNED		
NO.	CHECKED		
	RT. OF WAY		
	CHECKED		
	NO.		
	FILE NAME		

PROFILE	SURVEYED	BY	DATE
NOTE BOOK	GRADES		
NO.	CHECKED		
	B.M. NOTED		
	STRUCTURE NOTATIONS		
	CHKD		

HMG JOB NO 5819