

THE LOCATION, SIZE AND TYPE OF MATERIAL OF EXISTING UNDERGROUND UTILITIES INDICATED ON THE PLANS IS NOT REPRESENTED AS BEING ACCURATE, SUFFICIENT OR COMPLETE. IT SHALL BE THE CONTRACTOR'S RESPONSIBILITY TO DETERMINE THE ACTUAL LOCATION OF ALL SUCH FACILITIES, INCLUDING SERVICE CONNECTIONS TO UNDERGROUND UTILITIES. PRIOR TO CONSTRUCTION, THE CONTRACTOR SHALL NOTIFY THE UTILITY COMPANIES OF HIS OPERATIONAL PLANS AND SHALL OBTAIN FROM THE RESPECTIVE UTILITY COMPANIES DETAILED INFORMATION AND ASSISTANCE RELATIVE TO THE LOCATION OF THEIR FACILITIES AND THE WORKING SCHEDULE OF THE COMPANIES FOR REMOVAL OR ADJUSTMENT WHERE REQUIRED. IN THE EVENT AN UNEXPECTED UTILITY INTERFERENCE IS ENCOUNTERED DURING CONSTRUCTION, THE CONTRACTOR SHALL IMMEDIATELY NOTIFY THE UTILITY COMPANY OF JURISDICTION. THE ENGINEER SHALL ALSO BE IMMEDIATELY NOTIFIED. ANY SUCH MAINS AND SERVICES SHALL BE RESTORED TO SERVICE AT ONCE AND PAID FOR BY THE CONTRACTOR AT NO ADDITIONAL COST TO THE CONTRACT.

CALL J.U.L.I.E. FOR UTILITY INFORMATION AT 1-800-892-0123. CONTACT FAA FOR ASSISTANCE IN LOCATING FAA CABLES AND UTILITIES.

NOTES

- 1. SEE SHEET 5 PROPOSED ELECTRICAL SITE PLAN FOR SITE LEGEND.

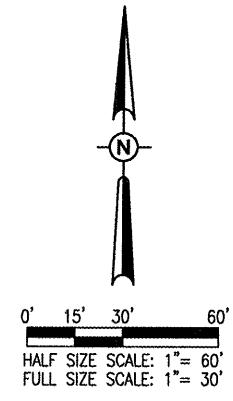
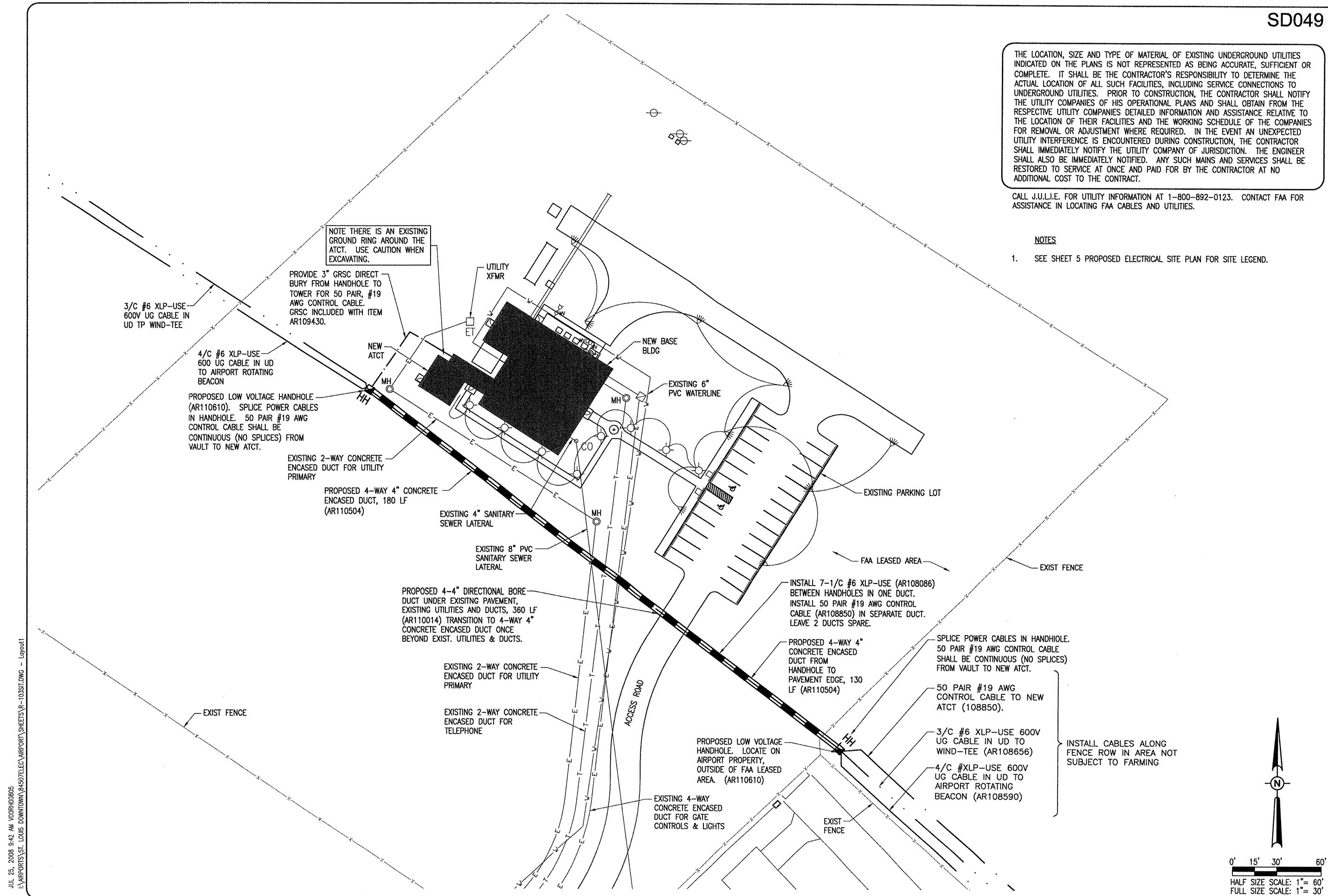
Table with columns: DATE, REVISION, BY

SAINT LOUIS DOWNTOWN AIRPORT logo and project information: A Division of Bi-State Development Agency, A.I.P. PROJ.: 3-17-0039-818

Revision table with columns: LAYOUT, DRAWN, REVIEWED, DATE

HANSON logo and contact information: Hanson Professional Services, Inc., 4227 Earth City Expressway, Suite 130, St. Louis, MO, 63045-1308

ATCT INTERFACE TO VAULT, NEW ATCT SITE DETAIL PLAN



JUL 25, 2008 8:42 AM V00RH00805 I:\AIRPORTS\ST. LOUIS DOWNTOWN\8450TELEC\AIRPORT\ SHEETS\R-103SIT.DWG - Layout1