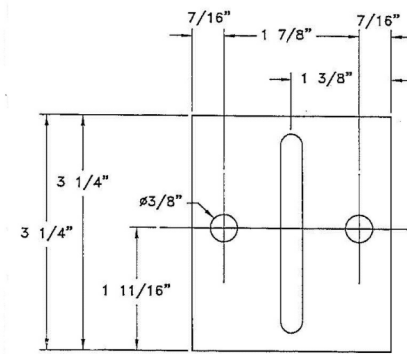
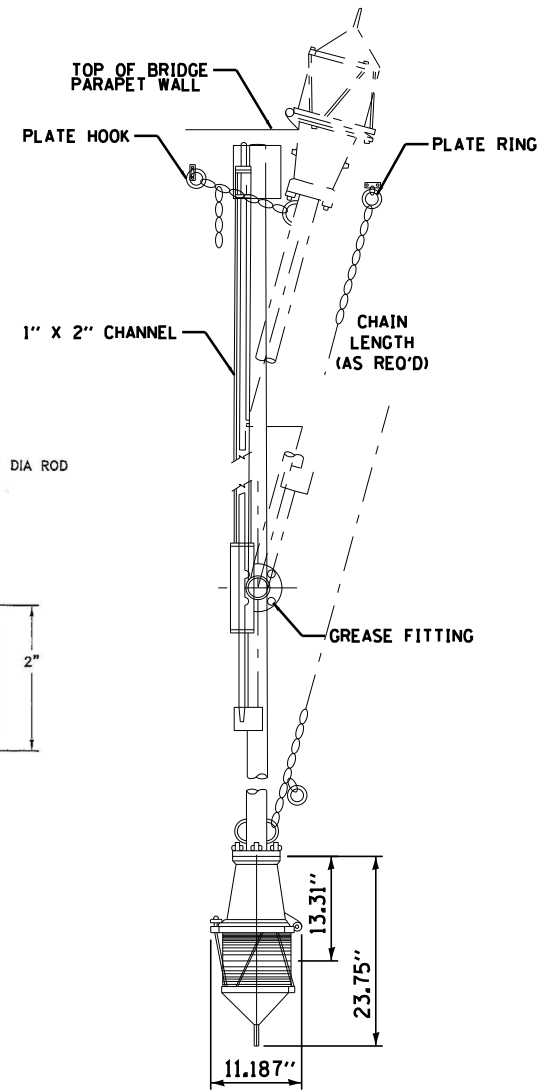
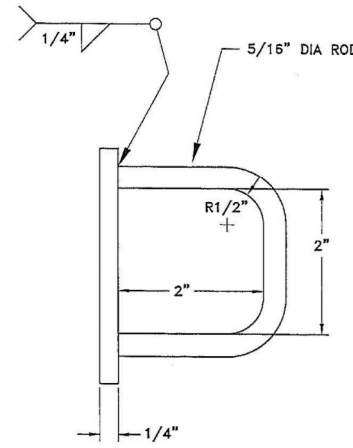


CHAIN CLIPS
ONE PER SWIVEL REQUIRED

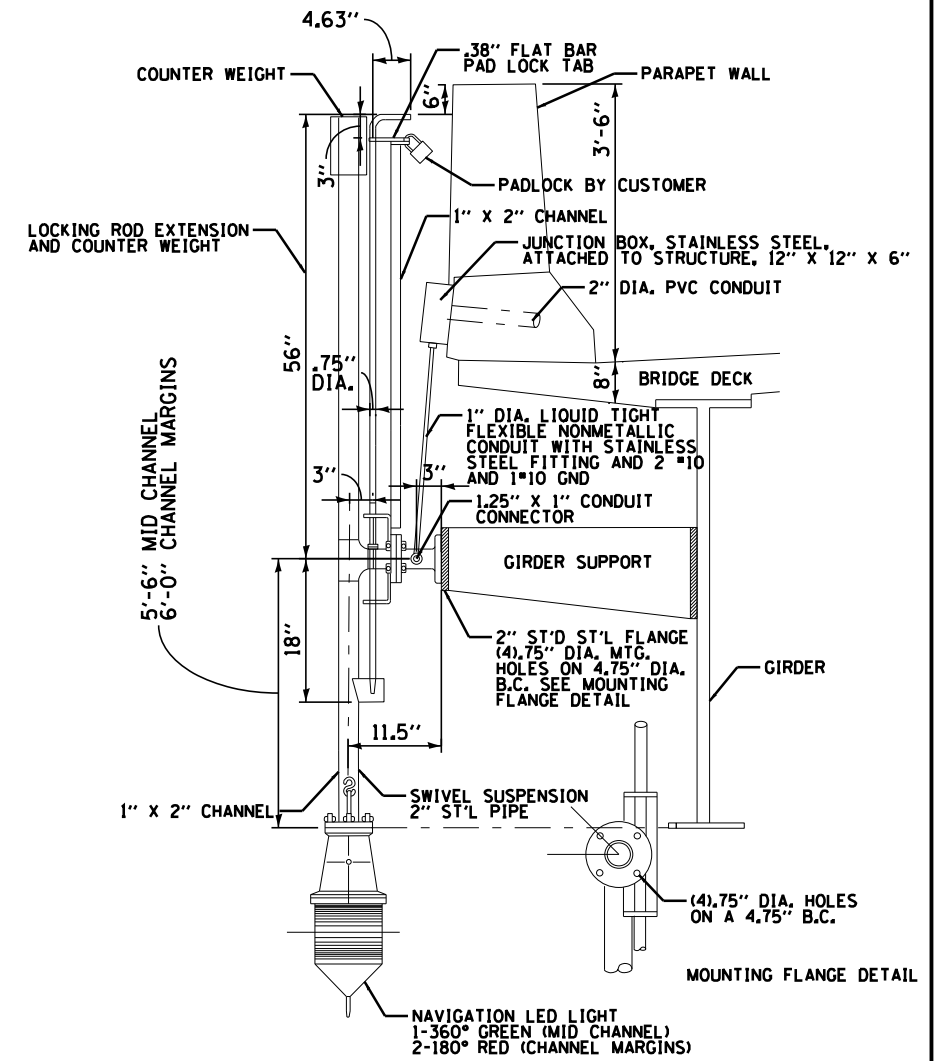


CHAIN SUPPORT
ONE PER SWIVEL REQUIRED

MATERIAL:
CARBON STEEL
FINISH:
HOT DIP GALVANIZED



NAVIGATION LUMINAIRE



NAVIGATION LIGHT FIXTURE AND LOCKING SWIVEL ASSEMBLY

NOTES:

- ALL DIMENSIONS ARE IN INCHES UNLESS NOTED OTHERWISE. CONTRACTOR SHALL VERIFY DIMENSIONS IN FIELD PRIOR TO SUBMITTING SHOP DRAWINGS.
- THE CONTRACTOR SHALL SUBMIT SHOP DRAWINGS TO THE ENGINEER FOR APPROVAL OF THE NAVIGATION LIGHT ASSEMBLY.
- PLATE RING AND PLATE HOOK SHALL BE ATTACHED TO PARAPET WALL. SEE STRUCTURAL PLANS FOR PARAPET WALL DETAILS.
- FOR DIMENSIONS OF OTHER STRUCTURAL MEMBERS, REFER TO STRUCTURAL DRAWINGS.
- TOP OF NAVIGATION LIGHT HOUSING SHALL BE AT THE SAME ELEVATION AS THE BOTTOM OF ADJACENT GIRDER.
- LIQUID TIGHT CONDUIT AND CABLES FROM JUNCTION BOX TO NAVIGATION LIGHT SHALL BE INCLUDED IN THE COST OF THE NAVIGATION LIGHTING SYSTEM.

FILE NAME =	DESIGNED - GRR	REVISED -
... \DI60J16-sht-IL171-NavLight.dgn	DRAWN - JLW	REVISED -
USER NAME = jworthington	CHECKED - GHT	REVISED -
PLOT DATE = 6/23/2014	DATE - 6/23/2014	REVISED -



STATE OF ILLINOIS
DEPARTMENT OF TRANSPORTATION

NAVIGATION LIGHTING DETAILS

SCALE: SHEET 34 OF 49 SHEETS STA. TO STA.

F.A.P. RTE.	SECTION	COUNTY	TOTAL SHEETS	SHEET NO.
372/373	2013-038B-R	COOK	821	233
CONTRACT NO. 60J16			ILLINOIS FED. AID PROJECT	