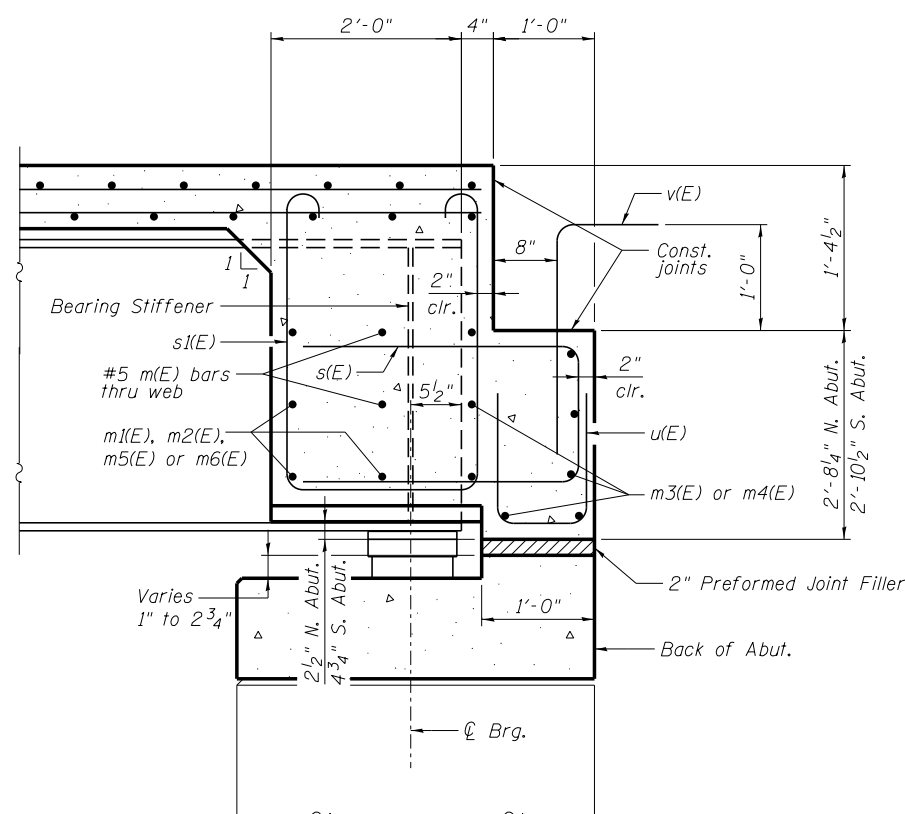


DIAPHRAGM ELEVATION AT ABUTMENT - SN 016-1001
 (NB N. Abutment shown looking North - NB S. Abutment opposite hand)



SECTION A-A

MIN. BAR LAP
 #6 bar = 3'-6"

- NOTES:**
1. Reinforcement bars in diaphragm are billed with superstructure on sheet SA17.
 2. Concrete in diaphragm is included with Concrete Superstructure on sheet SA17.
 3. For details of bars s(E) & s(E) see sheet SA17.
 4. For details of bars v(E), see sheets SA16 & SA17.
 5. For Bar Splicer Details, see sheet SA40.
 6. For Bearing Details, see sheet SA28.

benesch
 engineers · scientists · planners
 Alfred Benesch & Company
 205 North Michigan Avenue, Suite 2400
 Chicago, Illinois 60601
 312-565-0450 Job No. 10093

FILE NAME =	USER NAME = jsurber	DESIGNED - DJM	REVISED -
0161000_60J16_020_abutdiaphdet.NB.dgn		CHECKED - RMM	REVISED -
	PLOT SCALE =	DRAWN - MAK	REVISED -
	PLOT DATE = 12/20/2012	CHECKED - RMM	REVISED -

**STATE OF ILLINOIS
 DEPARTMENT OF TRANSPORTATION**

**SEMI-INTEGRAL ABUTMENT DIAPHRAGM DETAILS
 STRUCTURE NO. 016-1000/1001**

SHEET NO. SA20 OF SA40 SHEETS

F.A.P. RTE.	SECTION	COUNTY	TOTAL SHEETS	SHEET NO.
372	2013-038B-R	COOK	821	268
			CONTRACT NO. 60J16	
ILLINOIS FED. AID PROJECT				

X:\1000005\100093\Eng_Docs_Phase_1\SN_016_1000_1001_1st_Ave_over_47th_St\Final\0161000_60J16_020_abutdiaphdet.NB.dgn 9:40:51 AM 7/29/2014