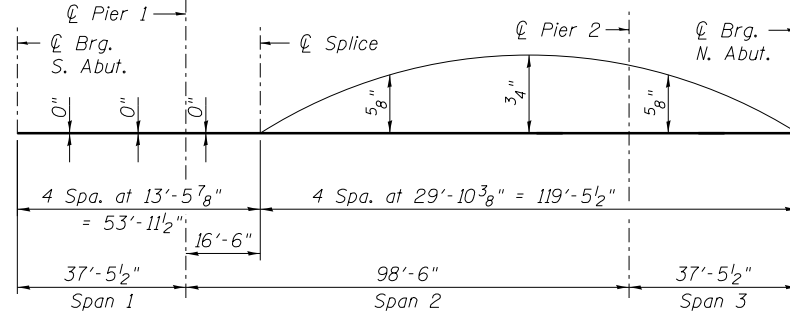
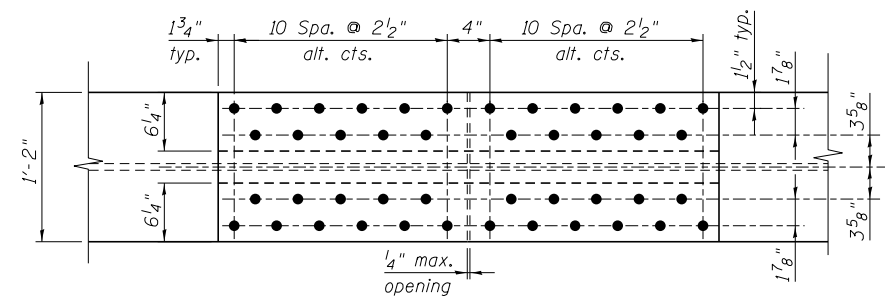


**GIRDER ELEVATION**

All plates of the girders including the bearing stiffeners shall be AASHTO M270, Grade 50.



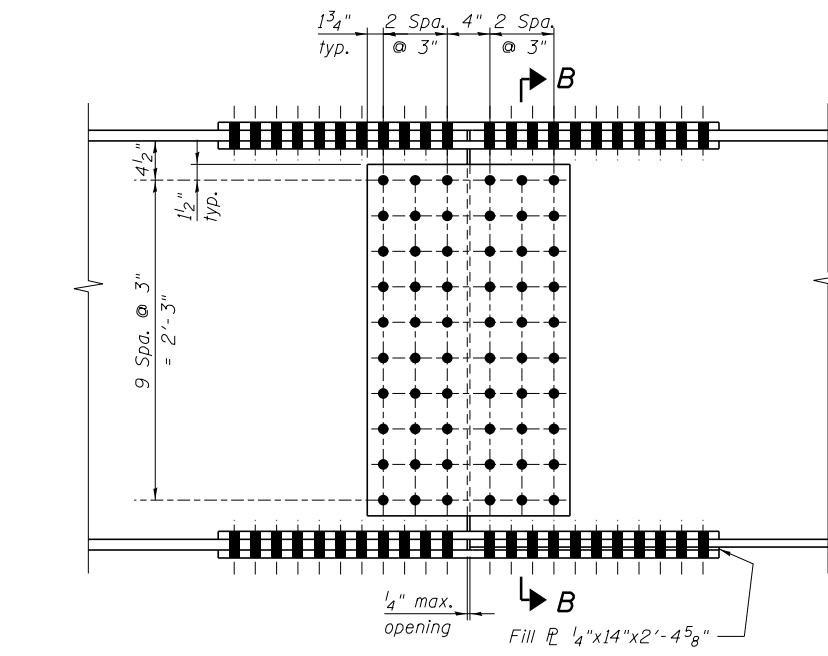
\*\*\* TOP OF WEB ELEVATIONS (SB)

Location	1S	2S	3S	4S	5S	6S
Cl Brg. S. Abut.	632.47	632.33	632.18	632.03	631.88	631.73
Cl Brg. Pier 1	632.56	632.41	632.26	632.11	631.96	631.82
Cl Splice	632.60	632.45	632.30	632.15	632.00	631.85
Cl Brg. Pier 2	632.62	632.47	632.32	632.18	632.03	631.88
Cl Brg. N. Abut.	632.56	632.41	632.26	632.11	631.96	631.81

\*\*\* TOP OF WEB ELEVATIONS (NB)

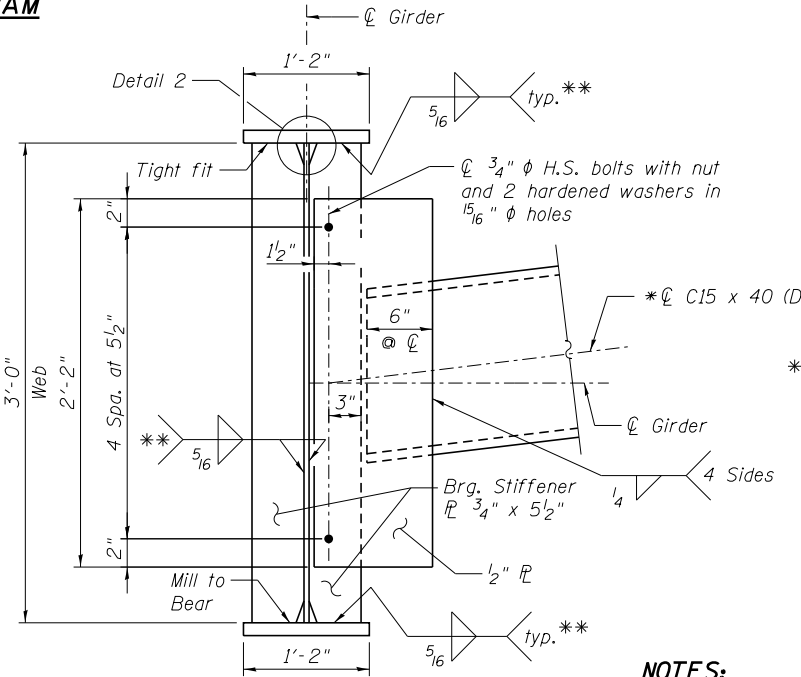
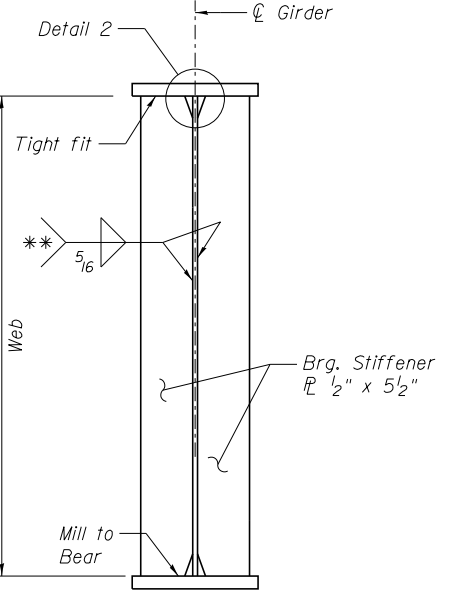
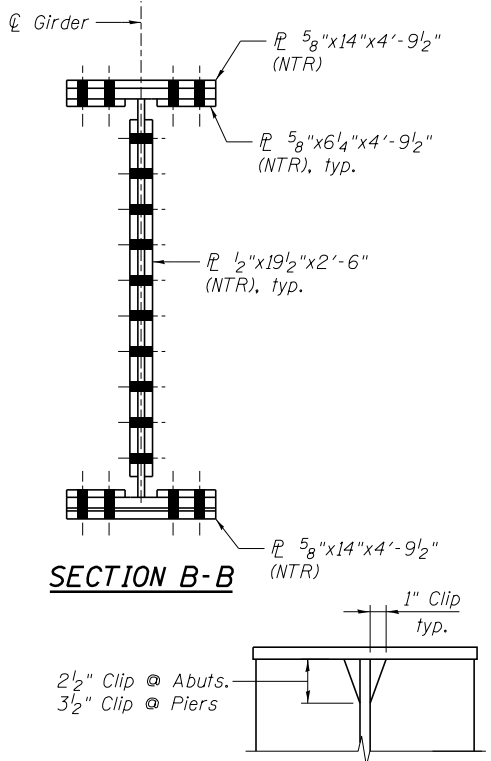
Location	1N	2N	3N	4N	5N	6N
Cl Brg. S. Abut.	631.87	632.02	632.17	632.32	632.47	632.62
Cl Brg. Pier 1	631.96	632.10	632.25	632.40	632.55	632.70
Cl Splice	631.99	632.14	632.29	632.43	632.58	632.73
Cl Brg. Pier 2	632.01	632.16	632.31	632.46	632.61	632.76
Cl Brg. N. Abut.	631.95	632.10	632.24	632.39	632.54	632.69

\*\*\*For Fabrication Only



**SPLICE DETAIL**

All splice plates, except fill plates, shall be AASHTO M270, Grade 50.



\*Alternate channels (C15x50) are permitted to facilitate material acquisition. Calculated weight of structural steel is based on the lighter section. The alternate, if utilized, shall be provided at no additional cost to the Department.

\*\* Terminate weld 1/4" from edges of stiffener fl.

**NOTES:**

- Two hardened washers required for each set of oversized holes.
- Load carrying components designated "NTR" shall conform to the Impact Testing Requirements, Zone 2.

FILE NAME :	USER NAME :	DESIGNED :	REVISIONS :
0161000_60J16_026.stldet.1.dgn	jsurber	JDM	-
		RMM	-
		MAK	-
		RMM	-

F.A.P. RTE.	SECTION	COUNTY	TOTAL SHEETS	SHEET NO.
372	2013-038B-R	COOK	821	274
				CONTRACT NO. 60J16
ILLINOIS FED. AID PROJECT				