

Concrete 1901 concrete W. Side, 57 Ave. 100 North of E
474 St. Elev. 63.29

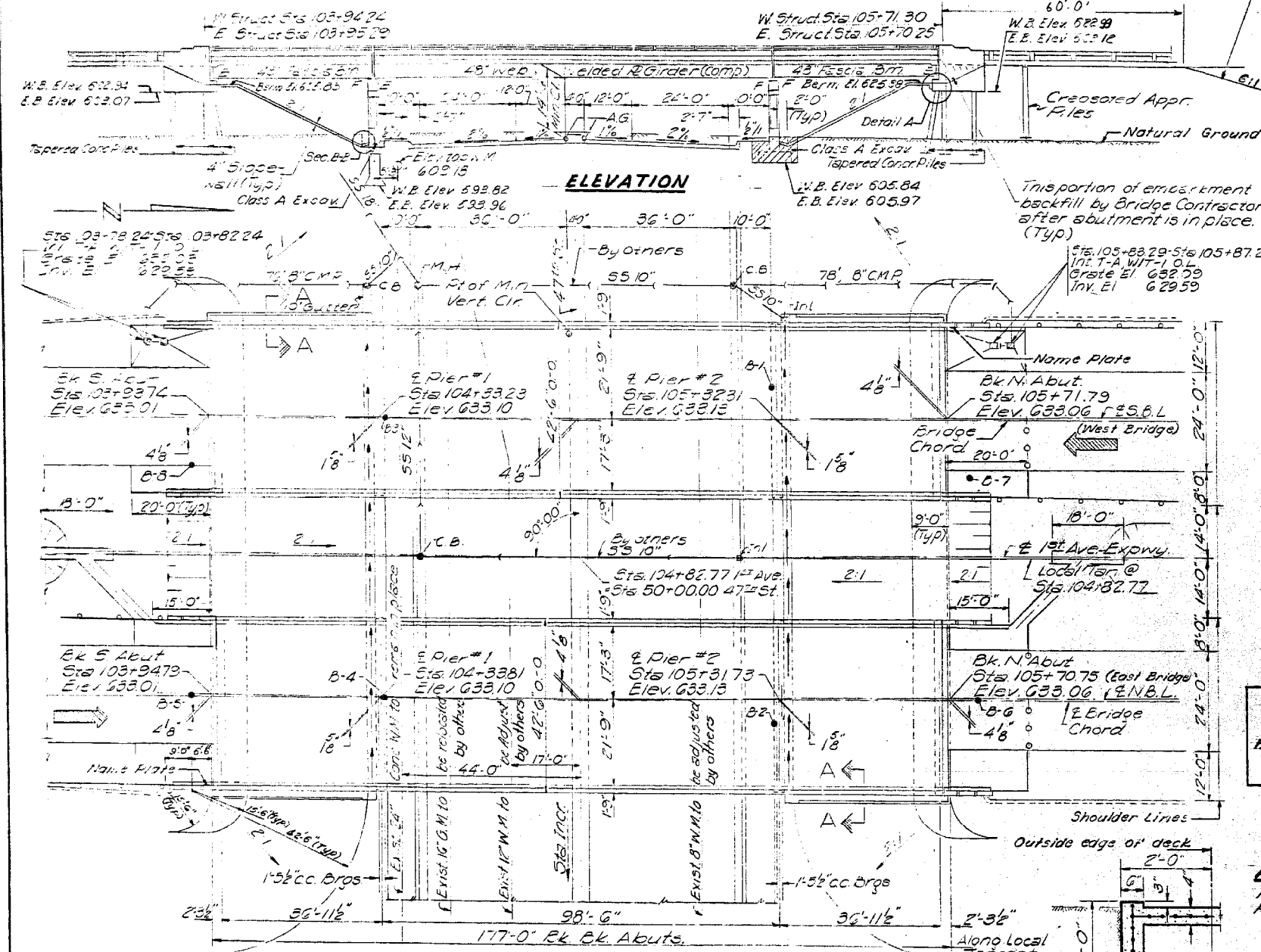
STATE OF ILLINOIS
DEPARTMENT OF PUBLIC WORKS & BUILDINGS
DIVISION OF HIGHWAYS

PROJECT NO.	DISTRICT	COUNTY	TOTAL SHEETS	SHEET NO.
133	133	COOK	149	101
SHEET NO. 1 23 SHEETS				

Minimum embankment which must be constructed prior to construction of bridge elements in the embankments.

GENERAL NOTES

- Coarse aggregate to be used in parapet handrails and abutment wingwalls must be free of chert, flint, limonite, lignite, and sandstone.
- ~~The concrete floor shall be finished with a 6" to 8" expansion joint.~~
- Slope Wall shall be reinforced with welded wire fabric 6"x6" mesh, weighing 58 Lb. per 100 Sq. Ft.
- All reinforcement bars shall be lapped 20 diameters unless otherwise shown.
- All structural steel shall conform to A.S.T.M. Designation A-36.
- Rivets 3/4" Open holes 1 1/2", unless otherwise noted.
- All welding shall conform to the current specifications for Welded Hwy. and Railway Bridges of the American Welding Society.
- Anchor bolts shall be set before bolting diaphragms over supports.
- Field welding of construction accessories to the bottom flanges will not be permitted. Field welding in other areas will be permitted only when approved by the Engineer.
- Stud shear connectors on the girder flanges shall be placed in the field after the steel has been erected and the deck forms are in place.
- Flange shear connectors are included in the quantity of structural steel. Number required = 4656. Estimated weight = 2860 lbs.
- Exposed surfaces of the expansion devices, inaccessible after erection, shall receive two shop coats of red lead paint. All other surfaces shall be given one shop coat of red lead paint. Anchor studs shall not be painted.
- Expansion devices are included in the quantity of structural steel. Estimated weight = 8840 lbs.
- Embankment drainage structures by others.
- Permanent forms will not be permitted in forming the concrete floor.
- The contractor shall drive one conc. test pile at the North West Abut. and one at the South East Abut., both in a permanent location as directed by the Engineer before ordering the remainder of the piles.
- Excavation for portions of the structures in the embankments shall not be classified.
- Except as otherwise provided, all structural steel shall receive one shop coat of red lead paint and two field coats of paint. See special provisions for field paint.
- Concrete piles at abutments shall be driven in holes pre-cored through the embankment in accordance with Article 60.9(c) of the Standard Specifications.
- See Special Provisions for placement of Bituminous Concrete Surface Course Subclass T-11 and Coal Tar Interlayer Protective Coat.



STATION 104+82.77
BUILT 196 BY
STATE OF ILLINOIS
E.A. RT 133 SEC. 0102-683HBK
E.A. PROJ. U-383 (31)
LOADING HS 20

NAME PLATE
(See Std. 2113-1)

MAX. FTG. PRESSURES
Pier 1: 7 ksi
Pier 2: 5 ksi

TOTAL BILL OF MATERIAL

Item	Unit	Super	Sub.	Total
Class A Excav. For Structures	Cu. Yds.			26.0
Class A Concrete	Cu. Yds.	446.9	4226	869.5
Protective Coat	Sq. Yds.			400
Structural Steel	Lbs.	44160		44160
Aluminum Handrail	Lin. Ft.	695		695
Reinforcement Bars	Lbs.	106940	42980	149920
Concrete Piles	Lin. Ft.			1100
Test Piles (Concrete)	Ea.			2
Creosoted Appr. Piles	Lin. Ft.			200
Caisson Concrete	Cu. Yds.		40	40
Preformed Joint Sealant	Lin. Ft.	338		338
Name Plates	Ea.	2		2
Slope Wall (4")	Sq. Yds.			108.0
Coal Tar Interlayer Protective Coat	Sq. Yds.			1430
Bit. Conc. Surf. Crse. Subclass T-11	Tons			116.4

* Includes application on inside vertical face, top & exposed ends of the abutment wingwalls, & exposed surfaces of deck slab.

FILE DATA

Type: Creosoted
Number Req'd: 24
Zero Length: 25'-0"

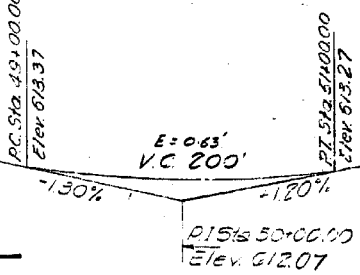
CURVE DATA

(First Ave Expressway)
P.I. Sta. 105+97.15
Δ=14° L=1,400'
D=1° E=43,028'
T=703.50' R=5729.58'

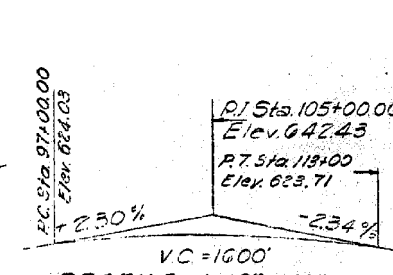
DESIGNED	J. Kessler
CHECKED	J. Kessler
DRAWN	J. Kessler
CHECKED	J. Kessler

SEPT 20 1967
EXAMINED
PASSED
APPROVED

PROFILE 47th ST



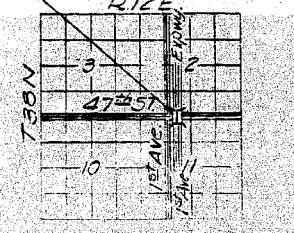
PROFILE 6th AVE EXPRESSWAY



DESIGN STRESSES

f_c = 1400 psi (Sub. & Parapet)
f_c = 1200 psi (Deck Slab)
f_s = 20000 psi (Reinf.)
f_s = 20000 psi (Struct.)
V_c = 75 psi (Ftgs.)
n = 10

LOCATION PLAN



PROJ. U-383 (31)
GENERAL PLAN ELEVATION
1st AVE EXPRESSWAY OVER 47th ST
E.A. RT 133 SEC. 0102-683 HBK
COOK COUNTY
STATION 104+82.77

FILE NAME =	USER NAME =	DESIGNED -	REVISOR -
0161000.60J16.041.existplan.dgn	tjanicke	FSM	
		CHECKED -	REVISOR -
		RMM	
		DRAWN -	REVISOR -
		FSM	
		CHECKED -	REVISOR -
		RMM	
		PLOT DATE =	
		12/20/2012	

FOR INFORMATION ONLY

F.A.P. RTE.	SECTION	COUNTY	TOTAL SHEETS	SHEET NO.
372	2013-038B-R	COOK	821	289
CONTRACT NO. 60J16				
ILLINOIS FED. AID PROJECT				

X:\100005\10093\Eng_Docs_Phase_II\SN_016_1000_1001_1st_Ave_over_47th_St_Final\0161000.60J16.041.existplan.dgn 2:28:30 PM 6/23/2014