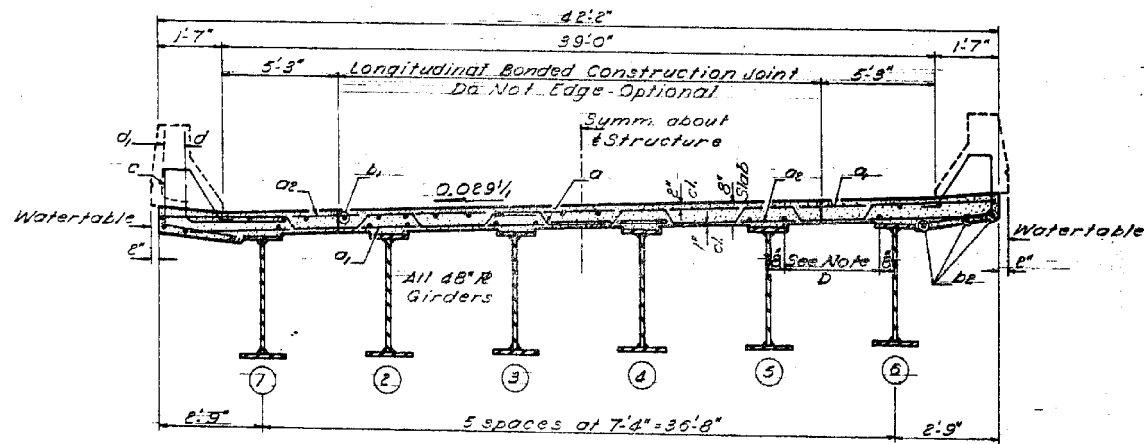


HALF PLAN
(Span 2 East & West Bridges)



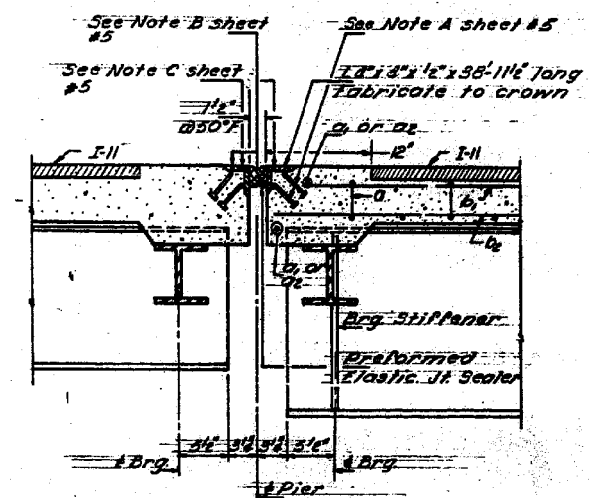
CROSS SECTION
(Looking North)

Note D:
10-#5bc bars at 8" cts.
Typical spacing

DESIGNED: John Harper
CHECKED: J. Kessler
DRAWN: J. Kessler
CHECKED: J. Kessler

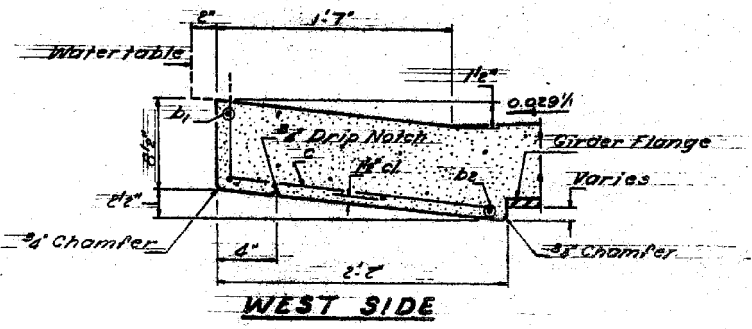
EXAMINED: [Signature]
PASSED: [Signature]
APPROVED: [Signature]

SEPT 28 1967

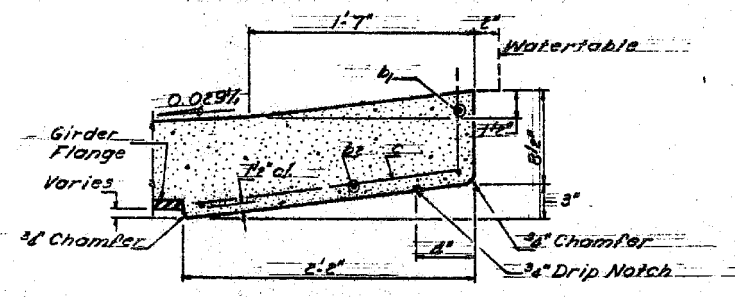


SECTION B-B

Note:
See sheet #5 for details of bars
a, c, d and Preformed Elastic
Joint Sealer.



WEST SIDE



EAST SIDE
SLAB EDGE DETAILS

2 SPANS
BILL OF MATERIAL

Bar	No.	Size	Length	Shape
a	296	#6	23'7"	
b	300	#6	23'5"	
c	300	#6	18'6"	
d	536	#5	22'6"	
e	536	#5	33'6"	
f	300	#4	5'11"	
g	390	#6	5'5"	

Reinforcement Bars 125 5570
Structural Steel 125 49220
Class X Concrete Cu 125 209.6
Preformed Elastic Joint Sealer 125 169

* Weight of bearing assemblies
with lead plates and anchor
bolts are included as
structural steel.
Estimated W.K. = 3000 lbs.

SUPERSTRUCTURE
EAST & WEST RIDGES
SPAN 2
E.A. RT. 133 SEC 0102-683 HB K
COOK COUNTY
STATION 104+82.11