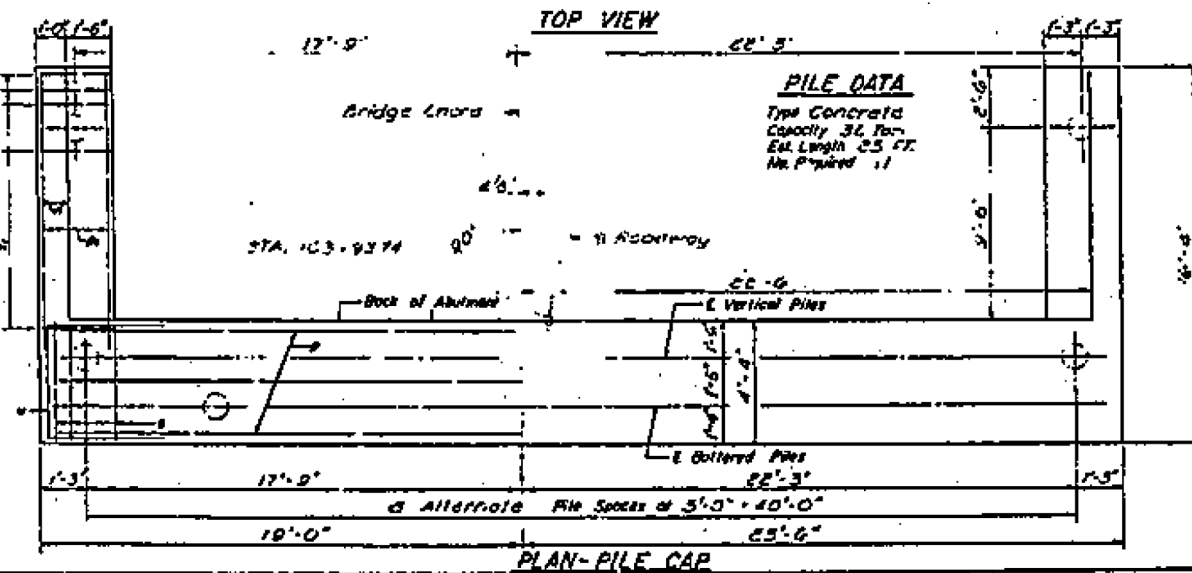
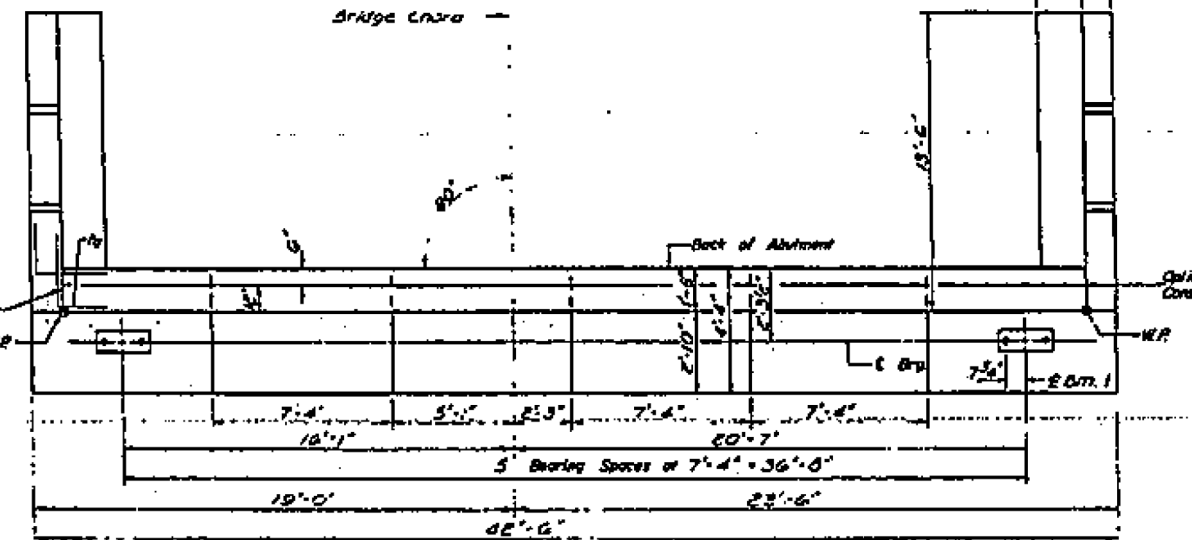
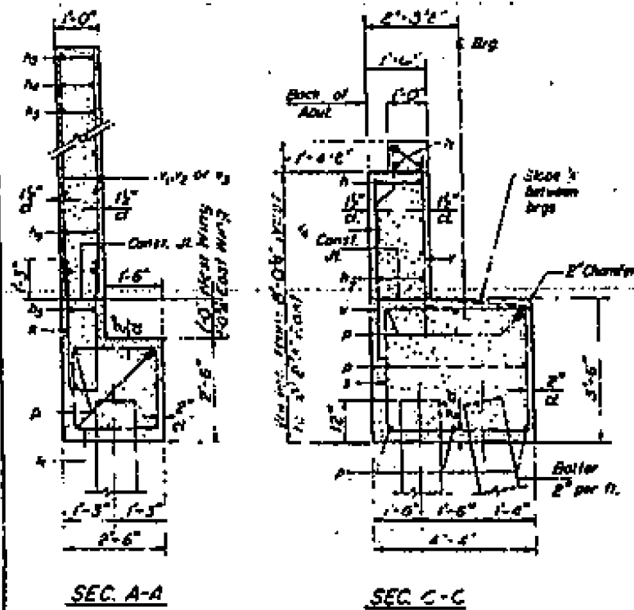
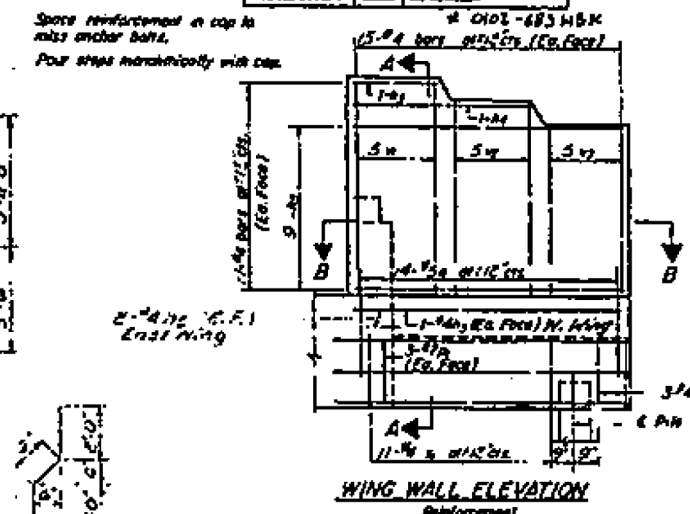
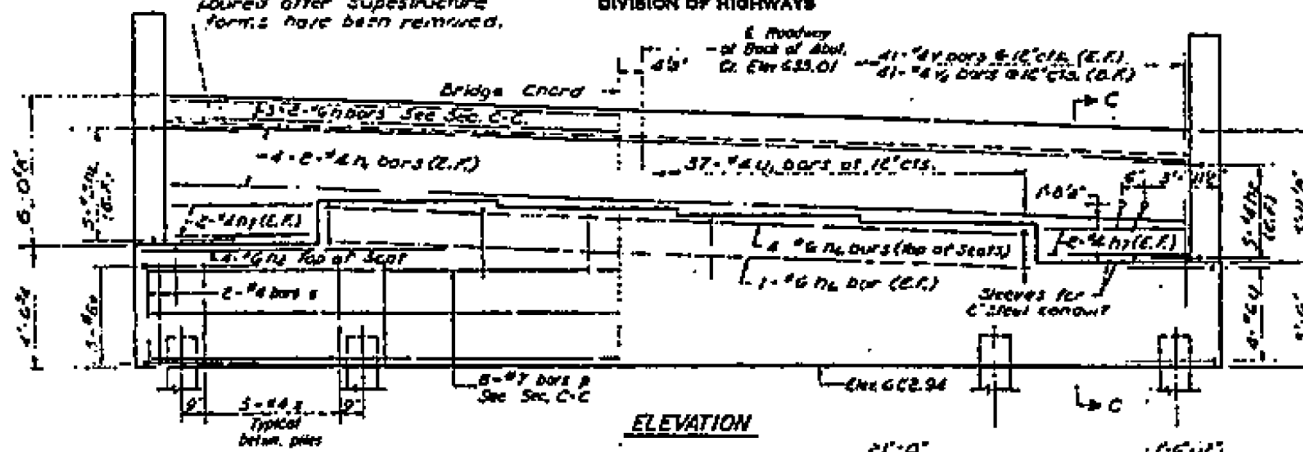
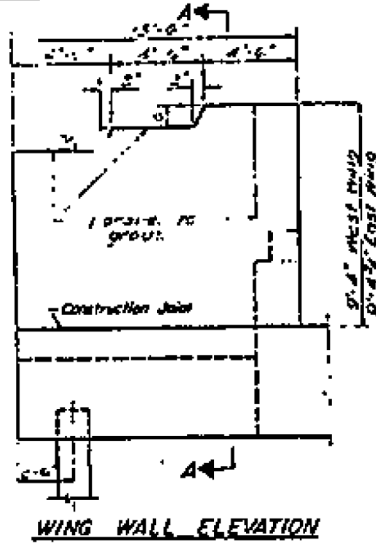


STATE OF ILLINOIS
DEPARTMENT OF PUBLIC WORKS & BUILDINGS
DIVISION OF HIGHWAYS

SHEET NO. 15
R COOK 149 115
23



PILE DATA
Type Concrete
Capacity 36 Ton.
Est. Length 25 FT.
No. Piles 11



SEC. B-B
ONE ABUTMENT
BILL OF MATERIAL

BAR	No.	Size	Length	Shape
N	6	#5	20'-0"	
N	6	#5	20'-0"	
N	20	#5	5'-0"	
N	4	#4	4'-3"	
N	4	#4	8'-9"	
N	22	#4	13'-9"	
N	6	#6	29'-0"	
N	6	#6	5'-9"	
N	4	#6	9'-9"	
N	6	#7	42'-0"	
N	10	#7	14'-0"	
V	42	#4	15'-1"	
V	20	#4	9'-9"	
V	9	#6	9'-11"	
U	37	#4	11'-0"	
V	38	#4	7'-0"	
V	20	#4	8'-0"	
V	20	#4	8'-0"	
V	20	#4	7'-8"	
V	31	#4	8'-2"	
Cost of Concrete		CU Yds	26.7	
Reinforcement Bars		LBS	4425	
Concrete Pks		LBS	172	

SOUTH ABUTMENT
WEST BRIDGE
R.A. RT. 133 SEC. 0102 G03 H8K
COOK COUNTY
STATION 104+82.77

DESIGNED: John Hayes
CHECKED: SG Farshaw JR
DRAWN: SG Farshaw JR
APPROVED: [Signature]

EXAMINED: [Signature]
PASSED: [Signature]
APPROVED: [Signature]

2-1-65