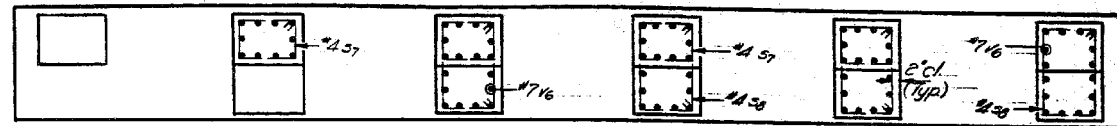
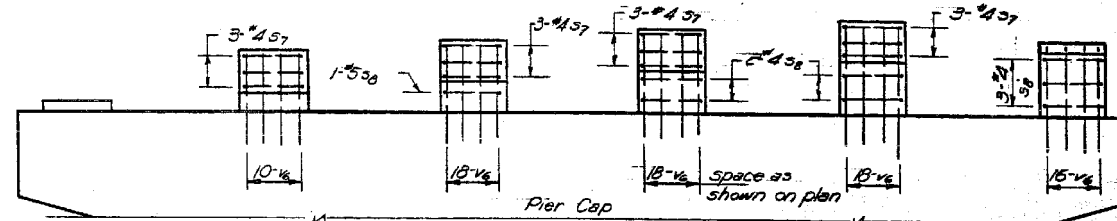


STATE OF ILLINOIS
DEPARTMENT OF PUBLIC WORKS & BUILDINGS
DIVISION OF HIGHWAYS

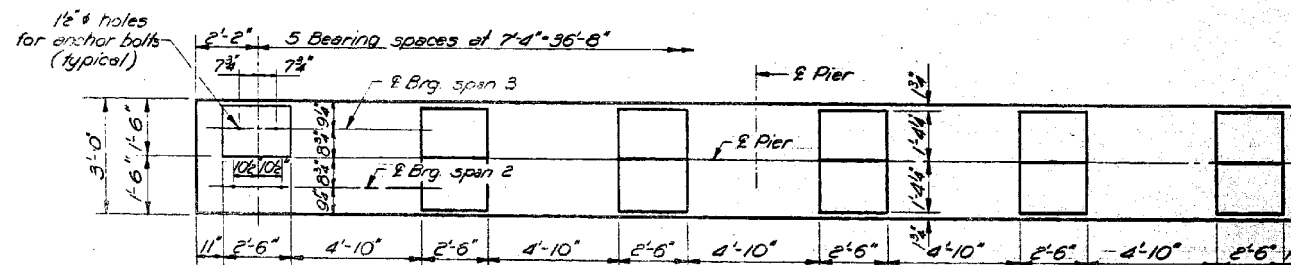
DATE	BY	CHKD	APPD	SHEET NO.
11/13	#	COOK	149	119
PROJECT NO. 016-1000-1001				23 SHEETS
*0102-683HBK				



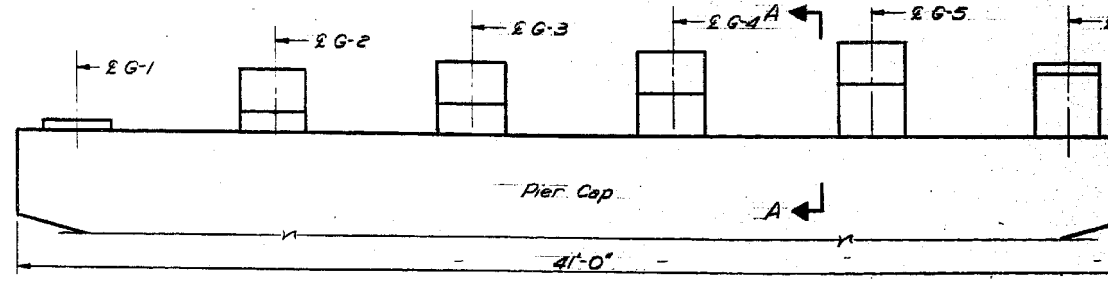
PLAN
(Showing Reinforcement)



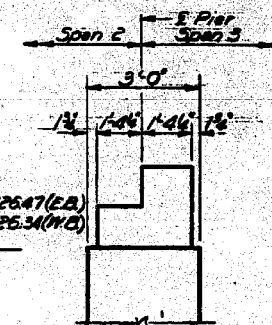
ELEVATION
Looking North, showing reinforcement



PLAN
(Showing dimensions)



ELEVATION
Looking North, showing elevations



SEC A-A
(Looking West)

See sheet 17 for details of bars 3, 4, 5
Work this sheet with sheet 18
Class X Concrete & Reinf. bars for Pedestals are
detailed on sheet 18
Pour Pedestals monolithically with Pier Cap.

DESIGNED *John Hagen*
CHECKED *Stanley S. ...*
DRAWN *JIM HENNINGER*
CHECKED *Stanley S. ...*

EXAMINED *...*
PASSED *W. Daumann*
APPROVED *...*

SEPT 28 1967

SEAT ELEVATIONS

	Span 2						Span 3					
	G-1	G-2	G-3	G-4	G-5	G-6	G-1	G-2	G-3	G-4	G-5	G-6
E Bridge	626.47	626.69	626.90	627.11	627.32	627.54	626.66	628.46	628.67	628.88	629.09	627.72
W Bridge	626.34	626.55	626.77	626.98	627.19	627.41	626.53	628.32	628.54	628.75	628.96	627.59

PEDESTALS-PIER 2
EAST & WEST BRIDGES
F.A. RT. 133 SEC. 7-683 HBK
COOK COUNTY
STA. 104+82.77

benesch
engineers · scientists · planners
Alfred Benesch & Company
205 North Michigan Avenue, Suite 2400
Chicago, Illinois 60601
312-565-0450 Job No. 10093

FILE NAME = 0161000.60J16.055.existplan.dgn

USER NAME = tjenicke
DESIGNED - FSM
CHECKED - RMM
DRAWN - FSM
CHECKED - RMM
PLOT SCALE =
PLOT DATE = 12/20/2012

DESIGNED - FSM
CHECKED - RMM
DRAWN - FSM
CHECKED - RMM
REVISED -
REVISED -
REVISED -
REVISED -

STATE OF ILLINOIS
DEPARTMENT OF TRANSPORTATION

EXISTING PLAN INFORMATION (15 OF 25)
STRUCTURE NO. 016-1000/1001

SHEET NO. SAX15 OF SAX25 SHEETS

FOR INFORMATION ONLY

F.A.P. RTE.	SECTION	COUNTY	TOTAL SHEETS	SHEET NO.
372	2013-038B-R	COOK	821	303
CONTRACT NO. 60J16			ILLINOIS FED. AID PROJECT	

X:\1000005\10093\Eng_Docs_Phase_1\1000005-Phase_1\1000005-016-1000-1001-1st-Ave-over-47th-St\Final\0161000-60J16-055-existplan.dgn 2:30:47 PM 6/23/2014