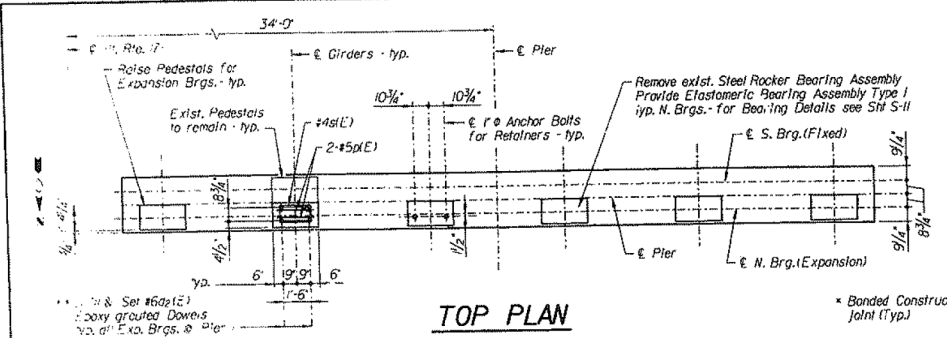
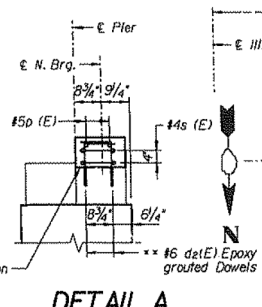


ROUTE NO.	SECTION	COUNTY	JOB NO.	SHEET NO.
FAU 2746	2013-0388-R	COOK	383	101
SHEETS 5-14				

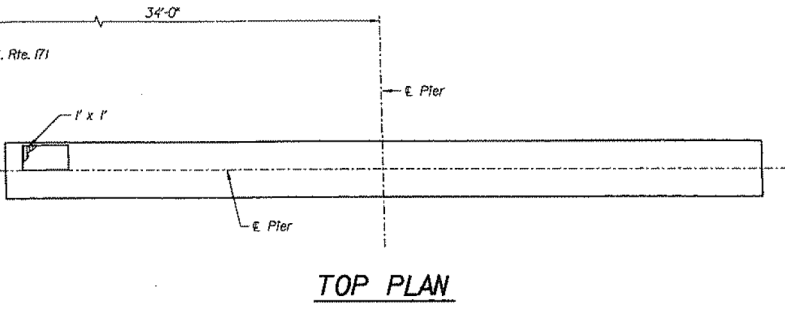
BILL OF MATERIAL			
Bar	No.	Size	Length
d ₂ (E)	24	#6	2'-0"
p(E)	12	#5	2'-0"
s(E)	12	#4	5'-11"
ITEM		UNIT	QTY.
Class X Concrete		Cu. Yd.	0.5
Reinforcement Bars, Epoxy Coated		Pound	140
Formed Concrete Repair Depth ≤ 5'		Sq. Ft.	74
Formed Concrete Repair Depth > 5'		Sq. Ft.	4



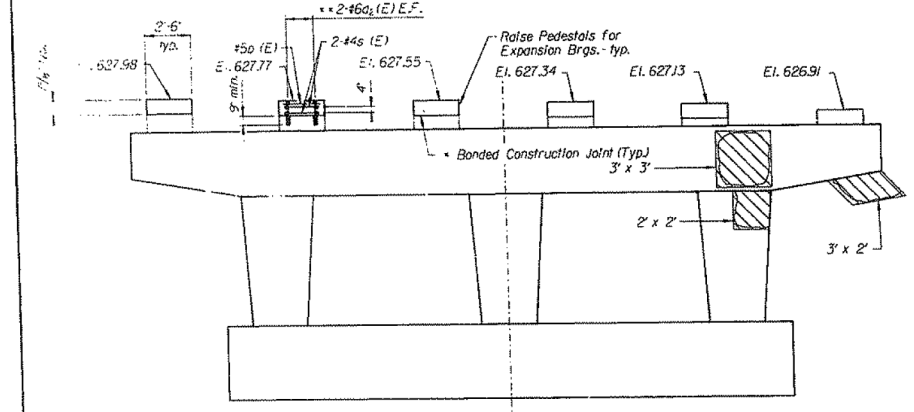
TOP PLAN



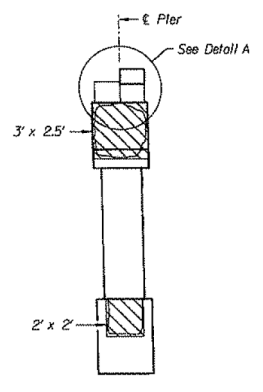
DETAIL A



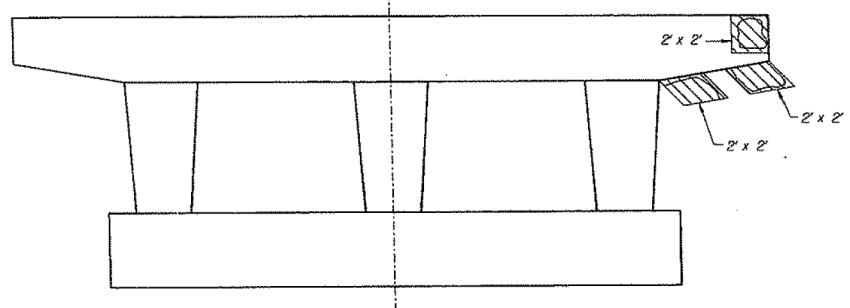
TOP PLAN



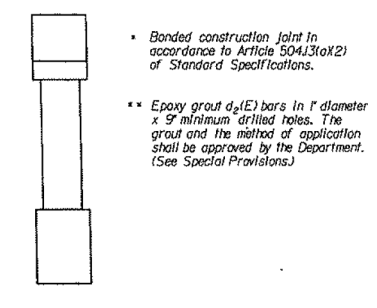
NORTH ELEVATION - PIER NO. 1



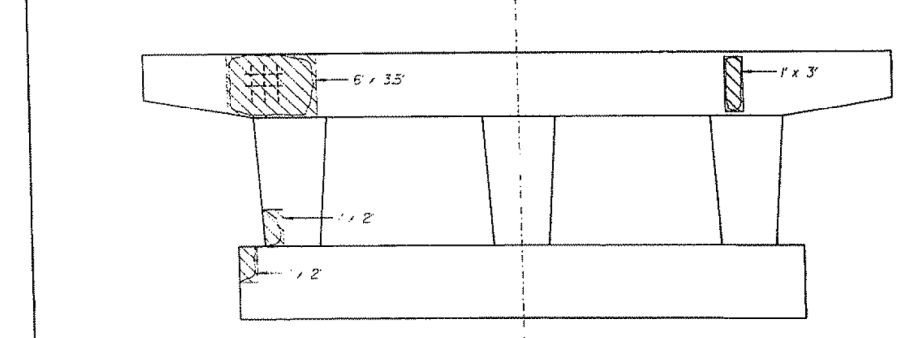
END VIEW
Looking East



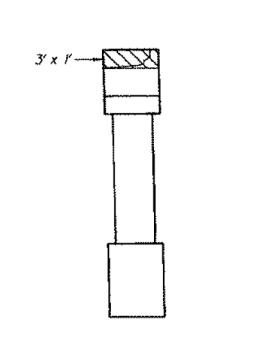
NORTH ELEVATION - PIER NO. 2



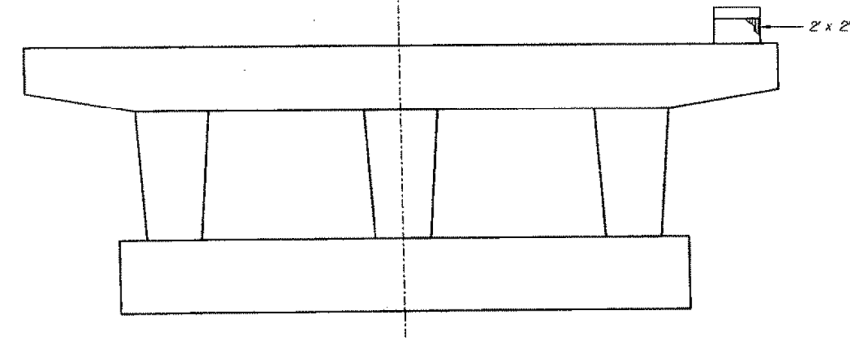
END VIEW
Looking East



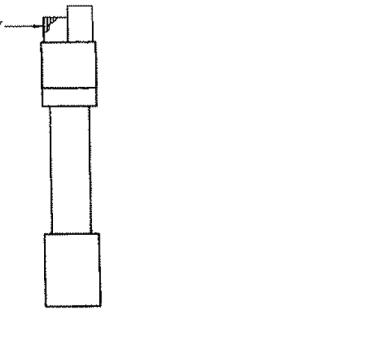
SOUTH ELEVATION - PIER NO. 1
SOUTHBOUND



END VIEW
Looking West

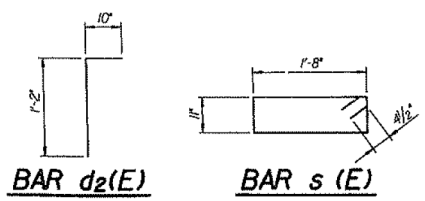


SOUTH ELEVATION - PIER NO. 2
SOUTHBOUND



END VIEW
Looking West

DESIGNED	LM
CHECKED	ELD
DRAWN	EF
CHECKED	JAA

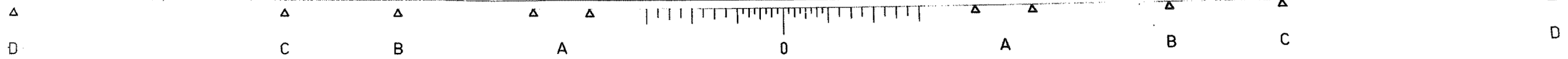


LEGEND

- Formed Concrete Repair ≤ 5' deep
- Formed Concrete Repair > 5' deep
- Exposed Reinforcing Bars

BOWMAN, BARRETT & ASSOCIATES INC.
CONSULTING ENGINEERS
200 N. MICHIGAN AVENUE SUITE 2000 CHICAGO, ILLINOIS 60601
JOB NO. 04

PIER REPAIRS - SOUTHBOUND
BRIDGE REHABILITATION ILLINOIS ROUTE 171
NORTHBOUND & SOUTHBOUND
OVER 47TH STREET
FAU 2746 SECTION 102-683 HBK
STATION 104+82.77
COOK COUNTY
STRUCTURE NO. 016-1001 N.B.
STRUCTURE NO. 016-1000 S.B.



benesch
engineers · scientists · planners
Alfred Benesch & Company
205 North Michigan Avenue, Suite 2400
Chicago, Illinois 60601
312-565-0450 Job No. 10093

FILE NAME =	USER NAME = tjenicke	DESIGNED - FSM	REVISIONS
0161000.60J16.061.existplan.dgn		CHECKED - RMM	REVISIONS
	PLOT SCALE =	DRAWN - FSM	REVISIONS
	PLOT DATE = 12/20/2012	CHECKED - RMM	REVISIONS

STATE OF ILLINOIS
DEPARTMENT OF TRANSPORTATION

EXISTING PLAN INFORMATION (21 OF 25)
STRUCTURE NO. 016-1000/1001

SHEET NO. SAX21 OF SAX25 SHEETS

FOR INFORMATION ONLY

F.A.P. RTE.	SECTION	COUNTY	TOTAL SHEETS	SHEET NO.
372	2013-0388-R	COOK	821	309
CONTRACT NO. 60J16				
ILLINOIS FED. AID PROJECT				

X:\100005\10093\Eng_Docs_Phase_1\1001000.1001.1st_Ave_over_47th_St\Final\0161000.60J16.061.existplan.dgn 6/23/2014 2:31:53 PM