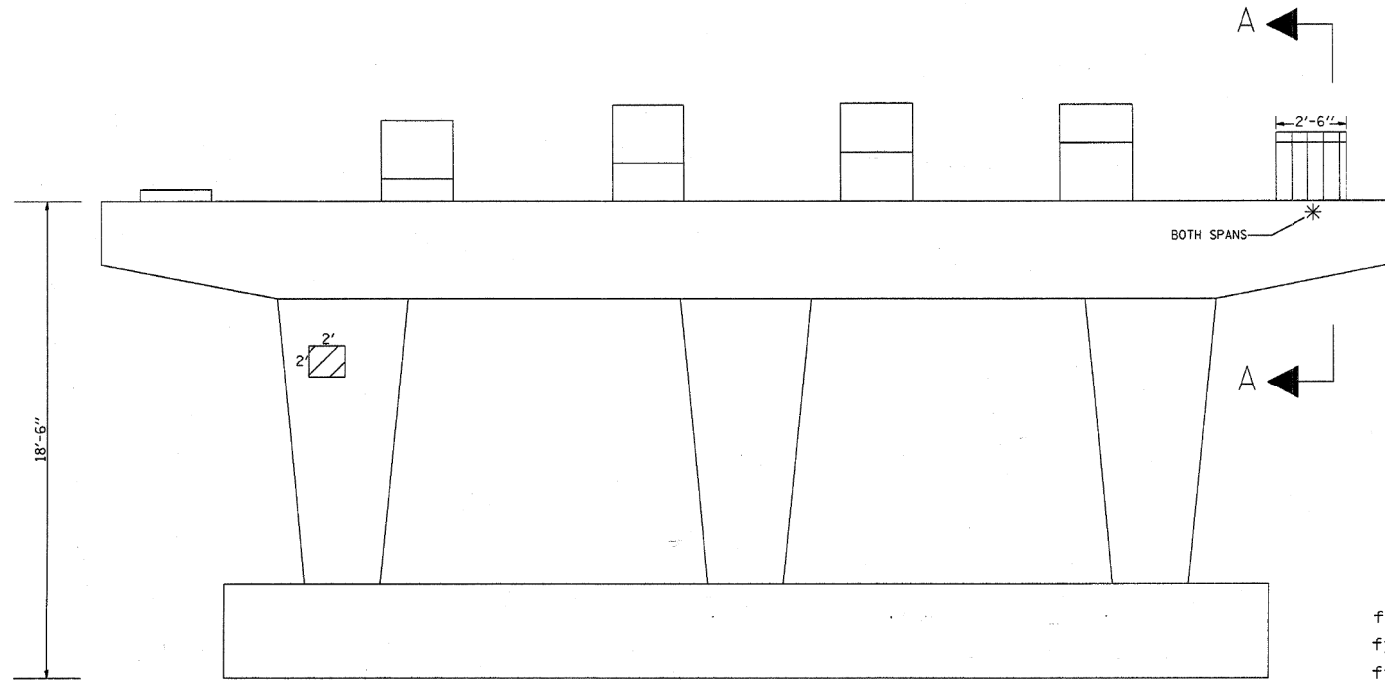


PIER 1 (NORTH FACE)  
(LOOKING SOUTH)



PIER 2 (SOUTH FACE)  
(LOOKING NORTH)

\* TEMPORARY SHORING AND CRIBBING

PIER 1 BILL OF MATERIAL	UNIT	QUANTITY
STRUCTURAL REPAIR OF CONCRETE > 5"	SQ FT	16
TEMPORARY SHORING AND CRIBBING	EA	4

BEAM REACTIONS TABLE

D.L.	62.6 K
L.L.	43.5 K
IMP.	9.7 K
TOTAL	115.8 K

PIER 1 & 2  
SPAN 2

BEAM REACTIONS TABLE

D.L.	22 K
L.L.	36.8 K
IMP.	11 K
TOTAL	69.8 K

PIER 1 & 2  
SPAN 1 & 3

PIER 2 BILL OF MATERIAL	UNIT	QUANTITY
STRUCTURAL REPAIR OF CONCRETE > 5"	SQ FT	15
STRUCTURAL REPAIR OF CONCRETE ≤ 5"	SQ FT	4
TEMPORARY SHORING AND CRIBBING	EA	2
CONCRETE REMOVAL	CU YD	.3
CONCRETE STRUCTURES	CU YD	.3
REINFORCEMENT BARS, EPOXY COATED	POUND	70
FURNISHING & ERECTING STRUCTURAL STEEL	POUND	200
ANCHOR BOLTS, 1" Ø	EACH	4

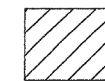
DESIGN STRESSES  
FIELD UNITS

$f_y = 60,000^*$  (REINFORCEMENT)  
 $f_y = 36,000^*$  (AASHTO M-270 GR 36)  
 $f'_c = 3,500$  psi

\* psi



STRUCTURAL REPAIR OF CONCRETE > 5"



STRUCTURAL REPAIR OF CONCRETE ≤ 5"



CONCRETE REMOVAL & CONCRETE STRUCTURES

SHEET 1 OF 3

FILE NAME =	USER NAME = msdaja	DESIGNED -	REVISED -
c:\projects\1229507\1171e77.dgn		DRAWN -	REVISED -
	PLOT SCALE = 50.0000' / 31L	CHECKED -	REVISED -
	PLOT DATE = 12/28/2007	DATE -	REVISED -

STATE OF ILLINOIS  
DEPARTMENT OF TRANSPORTATION

LOCATION 1: SN 016-1000  
PIERS STRUCTURAL REPAIR

SHEET 1 OF 4

SCALE: SHEET NO. OF SHEETS STA. TO STA.

F.A.P. RTE.	SECTION	COUNTY	TOTAL SHEETS	SHEET NO.
VARIOUS	2007-007I	VARIOUS	25	7
FED. ROAD DIST. NO. 1 ILLINOIS FED. AID PROJECT			CONTRACT NO. 60C36	



Alfred Benesch & Company  
205 North Michigan Avenue, Suite 2400  
Chicago, Illinois 60601  
312-565-0450 Job No. 10093

FILE NAME =	USER NAME = tjenicke	DESIGNED - FSM	REVISED -
0161000.60J16.064.existplan.dgn		CHECKED - RMM	REVISED -
	PLOT SCALE =	DRAWN - FSM	REVISED -
	PLOT DATE = 12/20/2012	CHECKED - RMM	REVISED -

STATE OF ILLINOIS  
DEPARTMENT OF TRANSPORTATION

EXISTING PLAN INFORMATION (24 OF 25)  
STRUCTURE NO. 016-1000/1001

SHEET NO. SAX24 OF SAX25 SHEETS

FOR INFORMATION ONLY

F.A.P. RTE.	SECTION	COUNTY	TOTAL SHEETS	SHEET NO.
372	2013-038B-R	COOK	821	312
ILLINOIS FED. AID PROJECT			CONTRACT NO. 60J16	

X:\1000005\10093\Eng\_Docs\_Phase\_1\1\SN\_016\_1000\_1001\_1st\_Ave\_over\_47th\_St\Final\0161000\_60J16\_064\_existplan.dgn

2:32:31 PM

6/23/2014