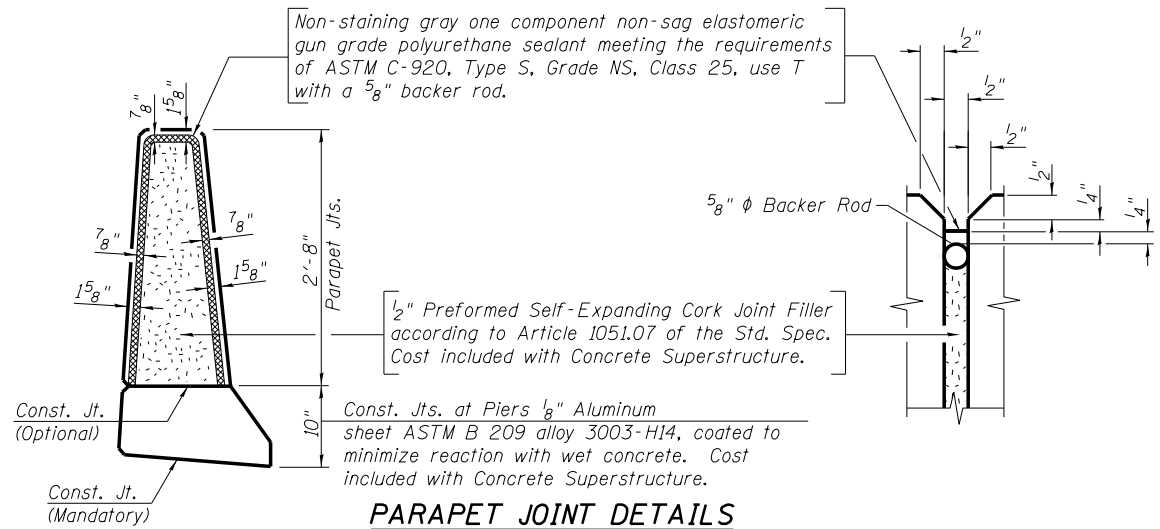
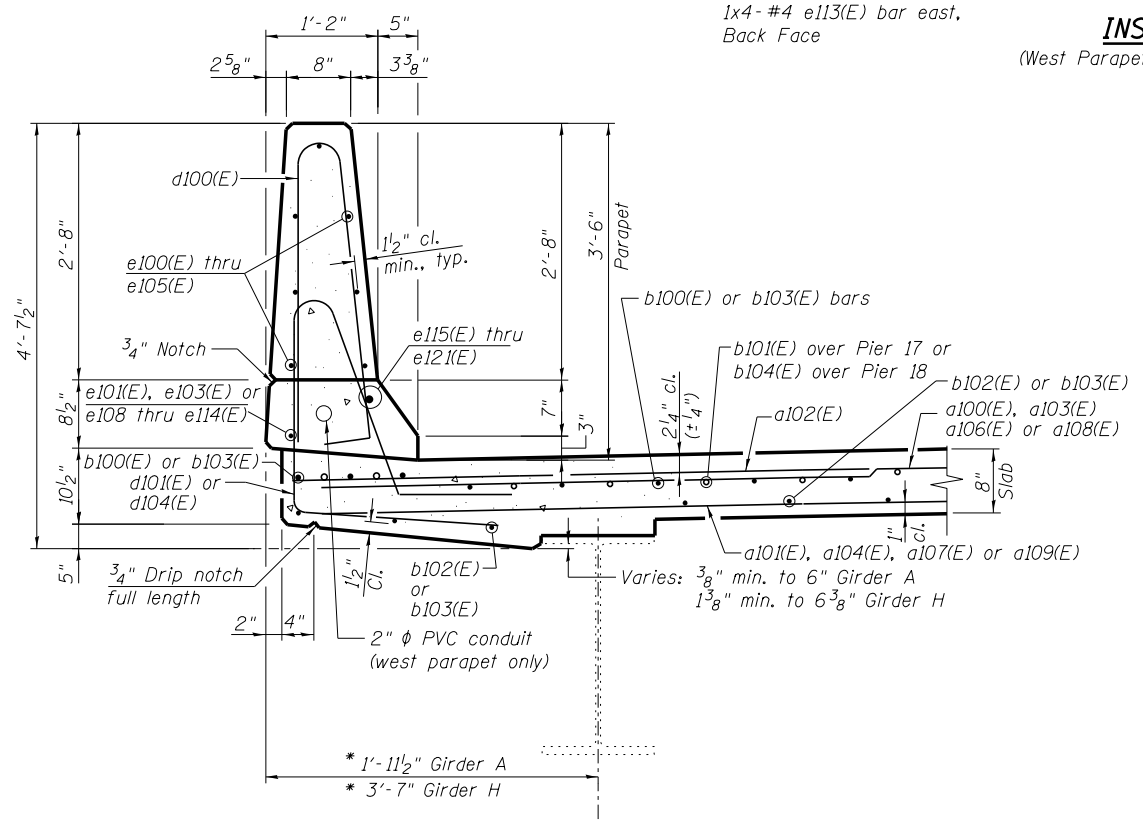


MINIMUM BAR LAP
(Parapets)
#4 bar = 2'-0"
#8 bar = 5'-2"



NOTE:
Dimensions measured along toe of parapet (gutterline).

benesch
engineers · scientists · planners
Alfred Benesch & Company
205 North Michigan Avenue, Suite 2400
Chicago, Illinois 60601
312-565-0450 Job No. 10093

FILE NAME =	USER NAME = jsurber	DESIGNED - JDM/DTS	REVISED -
0162455.60J16.015.super-det-1.dgn		CHECKED - RDK/AJK	REVISED -
	PLOT SCALE =	DRAWN - MAK	REVISED -
	PLOT DATE = 12/20/2013	CHECKED - RDK	REVISED -

STATE OF ILLINOIS
DEPARTMENT OF TRANSPORTATION

SUPERSTRUCTURE DETAILS (1 OF 2)
STRUCTURE NO. 016-2455

SHEET NO. SC15 OF SC35 SHEETS

F.A.P. RTE.	SECTION	COUNTY	TOTAL SHEETS	SHEET NO.
372	2013-038B-R	COOK	821	341
CONTRACT NO. 60J16			ILLINOIS FED. AID PROJECT	

X:\100005\100093\Eng_Docs_Phase_1\11\SN-016.2455-1st.Ave-over-AT&SF_PRR\Final\0162455-60J16.015.super-det-1.dgn 1:29:11 PM 7/23/2014