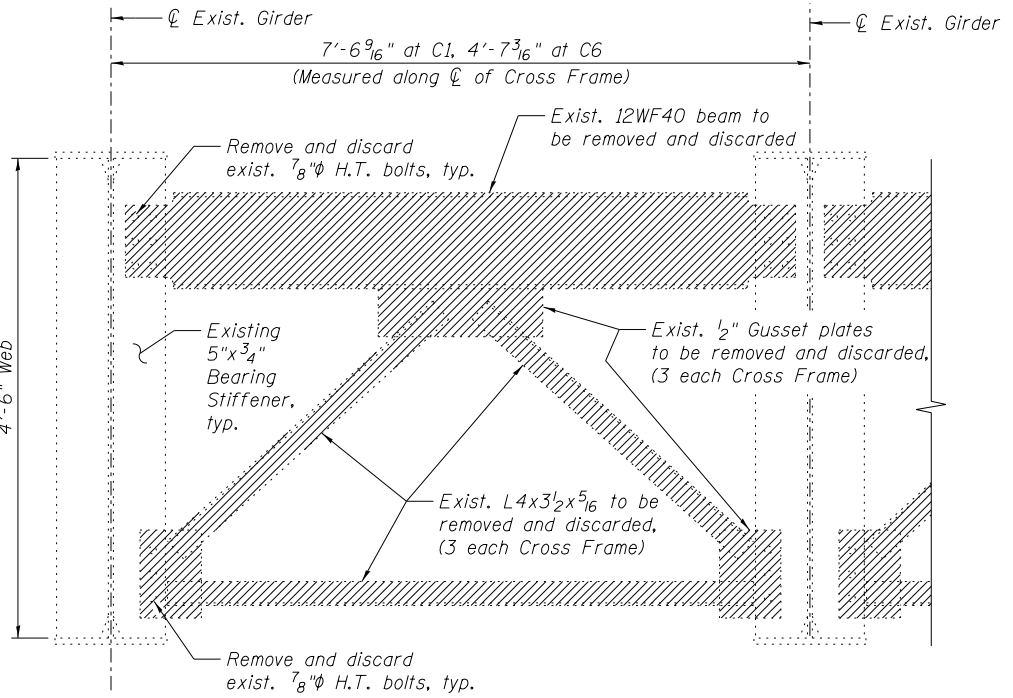
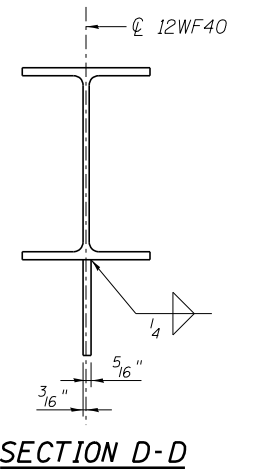


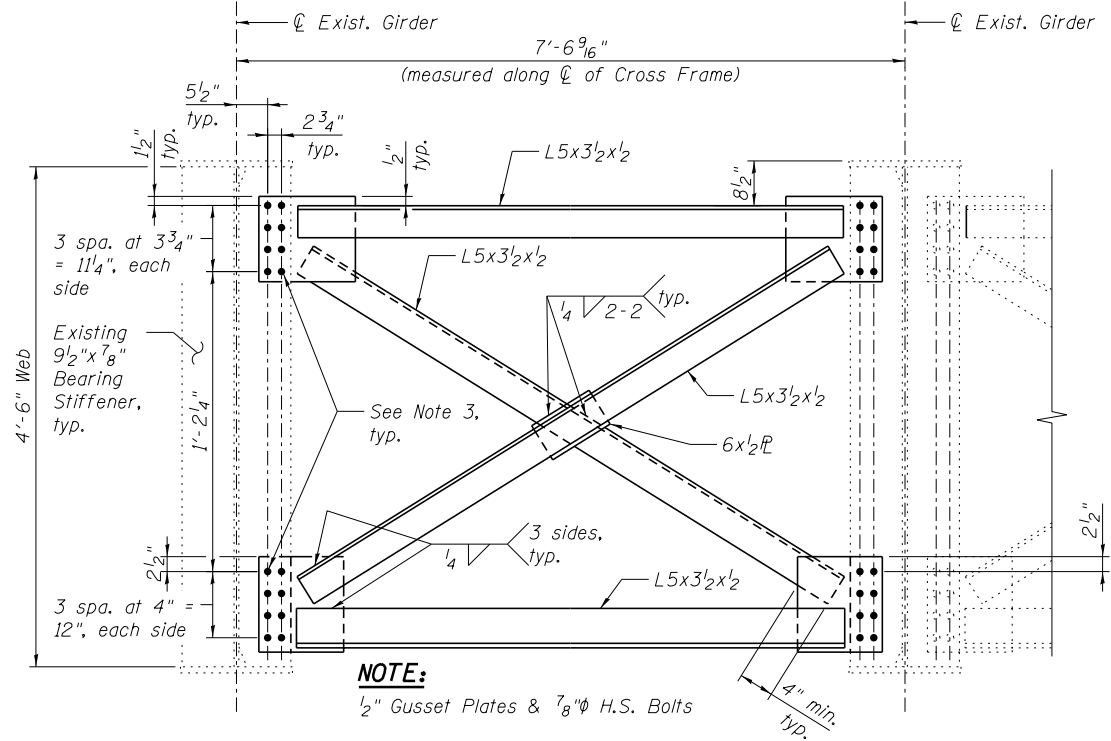
**EXIST. CROSS FRAME REMOVAL AT PIER 18**  
(C38)  
(No. Removed = 1)



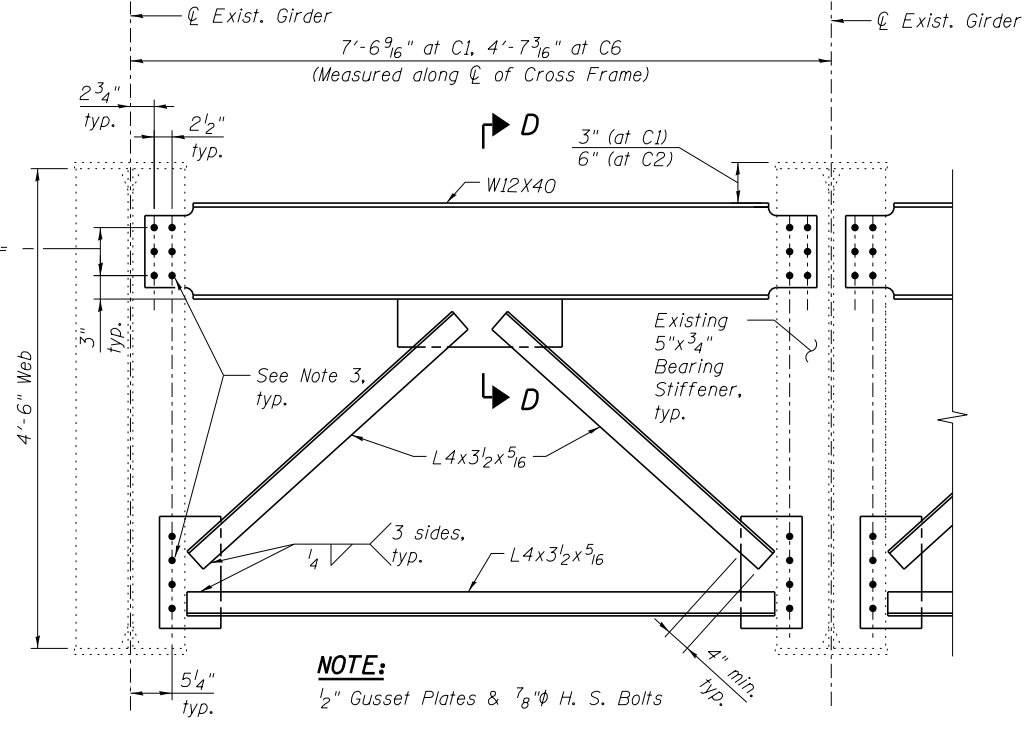
**EXIST. CROSS FRAME REMOVAL AT PIER 16**  
(C1 & C6)  
(C1 No. Removed = 2)  
(C6 No. Removed = 1)



- NOTES:**
- For existing Cross Frame References (C1, C6, C38), see Sheet SC25 of SC35.
  - Structural steel for new cross frames may be AASHTO M270 Grade 36.
  - New 7/8" dia. fasteners shall be ASTM A325 Type 1, mechanically galvanized bolts. Holes in new steel shall be subpunched or subdrilled 13/16" dia. and reamed in the field to 15/16" dia. Reuse existing 15/16" dia. holes in existing steel. Contractor to field verify location and spacing of existing holes and existing bearing stiffener sizes prior to ordering new materials. Cost included with "Furnishing and Erecting Structural Steel".



**NEW CROSS FRAME AT PIER 18**  
(C38)  
(No. Req'd = 1)



**NEW CROSS FRAME AT PIER 16**  
(C1 & C6)  
(C1 No. Req'd = 2)  
(C6 No. Req'd = 1)

**BILL OF MATERIAL**

ITEM	UNIT	TOTAL
Structural Steel Removal	Pound	12,970
Furnishing and Erecting Structural Steel	Pound	1640

**benesch**  
engineers · scientists · planners

Alfred Benesch & Company  
205 North Michigan Avenue, Suite 2400  
Chicago, Illinois 60601  
312-565-0450 Job No. 10093

FILE NAME =	USER NAME = jsurber	DESIGNED - GJK	REVISED -
		CHECKED - RDK	REVISED -
		DRAWN - MAK	REVISED -
		CHECKED - RDK	REVISED -
PLOT SCALE =			
PLOT DATE = 12/28/2013			

**STATE OF ILLINOIS**  
**DEPARTMENT OF TRANSPORTATION**

**STRUCTURAL STEEL DETAILS (1 OF 2)**  
**STRUCTURE NO. 016-2455**

F.A.P. RTE.	SECTION	COUNTY	TOTAL SHEETS	SHEET NO.
372	2013-038B-R	COOK	821	352
CONTRACT NO. 60J16			ILLINOIS FED. AID PROJECT	

SHEET NO. SC26 OF SC35 SHEETS

X:\100005\10093\Eng\_Docs\_Phase\_1\1\SN\_016\_2454\_2455\_1st\_Ave.cover\_AT&SF\_PRR\_Final\0162455\_60J16\_026\_structdet-1.dgn 12/29/13 PM 7/23/2014