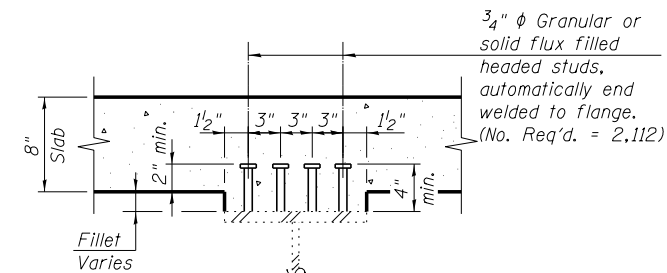
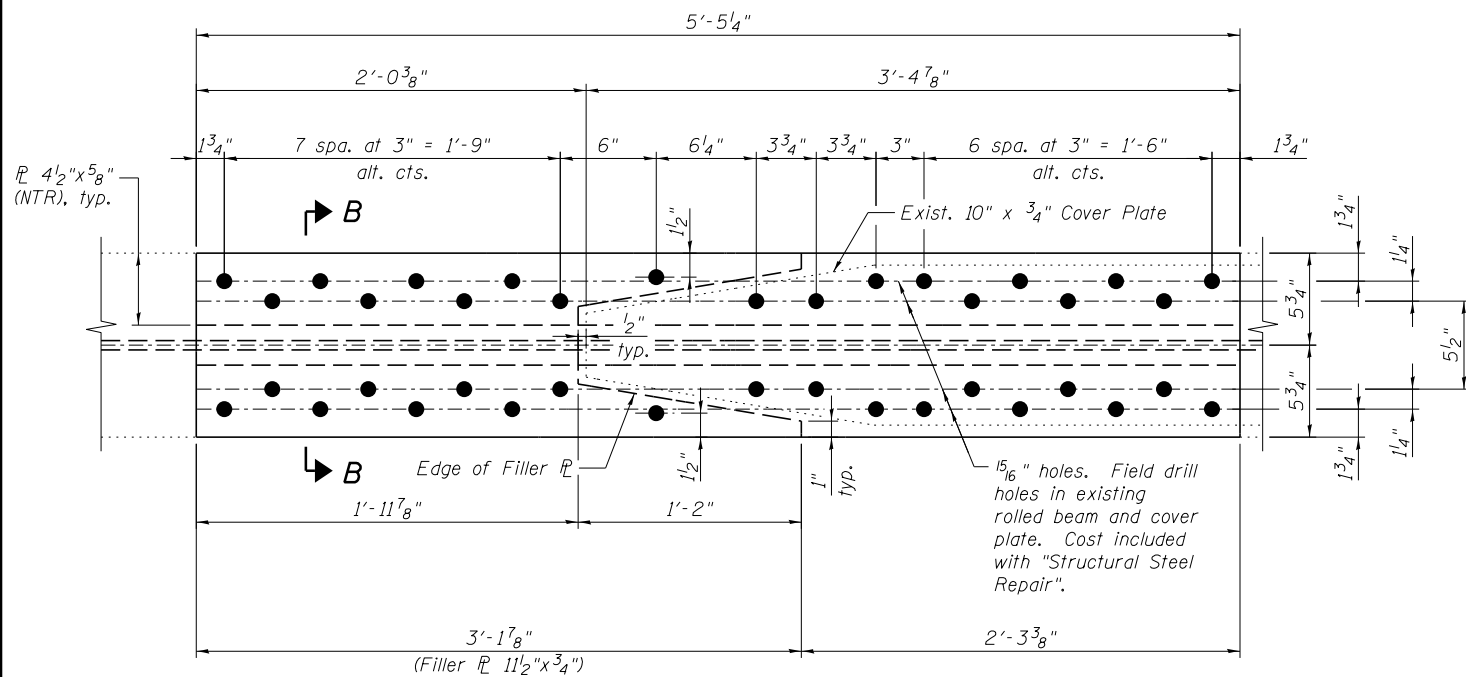


PARTIAL GIRDER ELEVATION



SECTION A-A

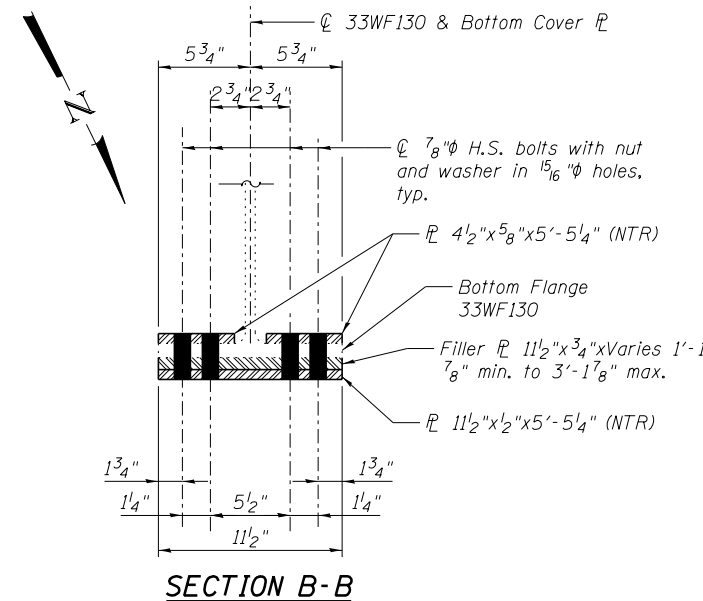


COVER PLATE RETROFIT

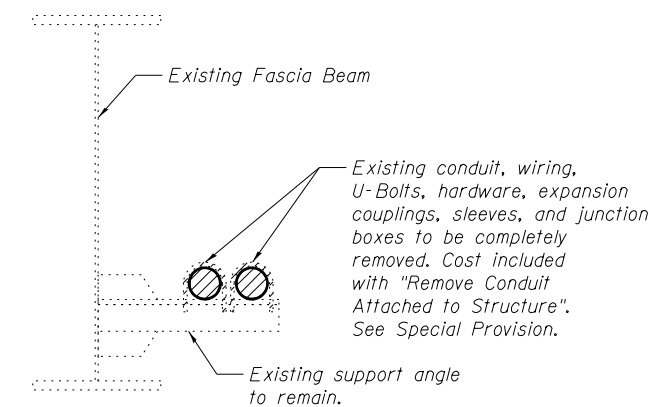
(Bottom Flange 33WF130 - Span 4, 16 Locations)

NOTE:

Cover plate retrofit is typical for both ends of existing bottom flange cover plate. South cover plate retrofit is shown, north cover plate retrofit is opposite hand. See Framing Plan for location of retrofit. Cost of cover plate retrofit to be included with "Structural Steel Repair".



SECTION B-B



CONDUIT REMOVAL DETAIL

NOTES:

1. Load carrying components designated "NTR" shall conform to the Impact Testing Requirement, Zone 2.
2. Structural steel plates shall conform to the requirements of AASHTO M270 Grade 50.

BILL OF MATERIAL

ITEM	UNIT	TOTAL
Stud Shear Connectors	Each	2,112
Structural Steel Repair	Pound	4,620
Remove Conduit Attached to Structure	Foot	800

benesch
engineers · scientists · planners
Alfred Benesch & Company
205 North Michigan Avenue, Suite 2400
Chicago, Illinois 60601
312-565-0450 Job No. 10093

FILE NAME =	USER NAME = tjenicke	DESIGNED - JDM/TPS	REVISED -
0162455.60J16.027.structdet-2.dgn		CHECKED - RDK/DTS	REVISED -
	PLOT SCALE =	DRAWN - MAK	REVISED -
	PLOT DATE = 12/20/2013	CHECKED - RDK/TPS	REVISED -

**STATE OF ILLINOIS
DEPARTMENT OF TRANSPORTATION**

**STRUCTURAL STEEL DETAILS (2 OF 2)
STRUCTURE NO. 016-2455**

SHEET NO. SC27 OF SC35 SHEETS

F.A.P. RTE.	SECTION	COUNTY	TOTAL SHEETS	SHEET NO.
372	2013-038B-R	COOK	821	353
ILLINOIS FED. AID PROJECT			CONTRACT NO. 60J16	