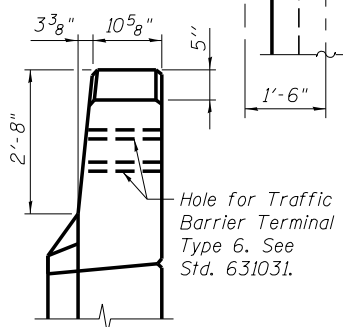
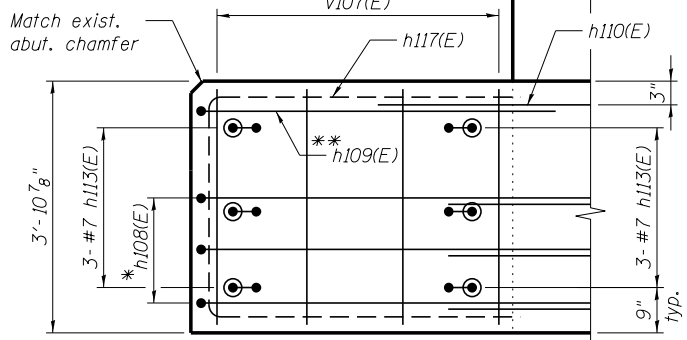


WINGWALL ELEVATION

Showing Dimensions
West Wingwall shown looking East
(East Wingwall opposite hand, Similar)



VIEW D-D

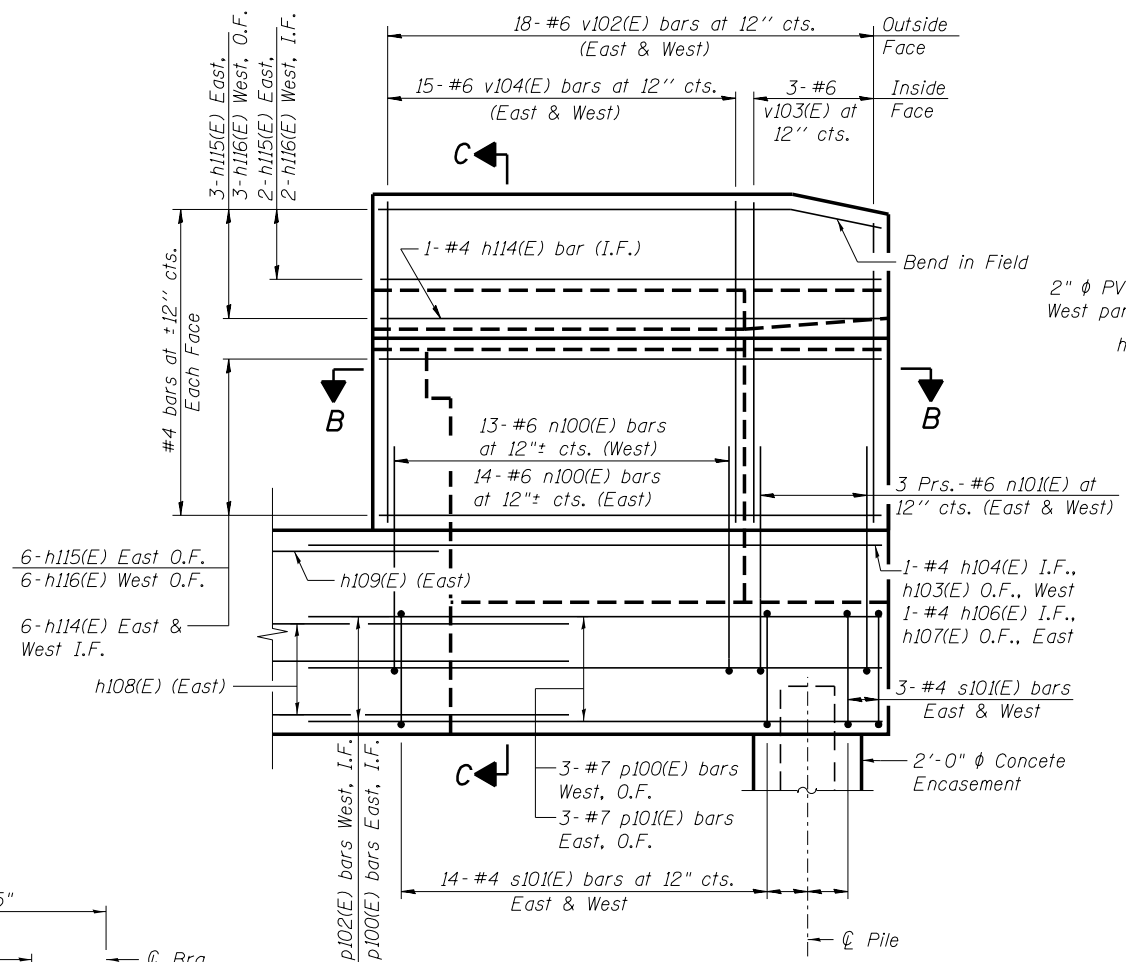


VIEW A-A

For location of View A-A, see Sheet SC30.

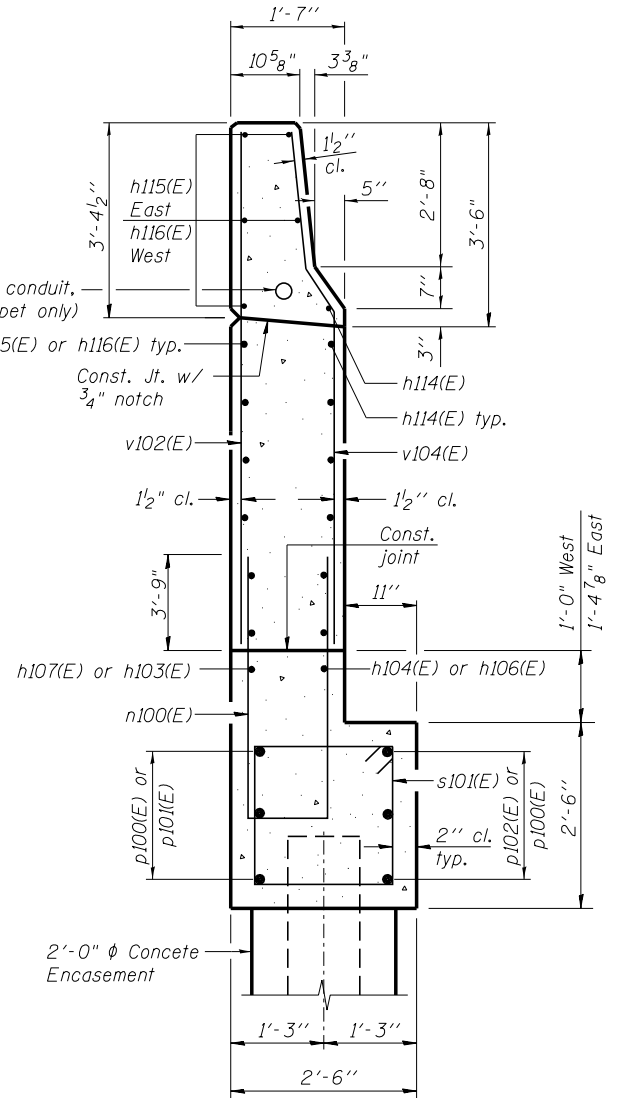
- * Lap with p101(E) bars
- ** Lap with h107(E) bar

Note: Epoxy grout h113(E) and v108(E) bars into existing abutment cap per Section 584 of Standard Specifications. See Minimum Embedment Depth table below. (Cost included with Concrete Structures).

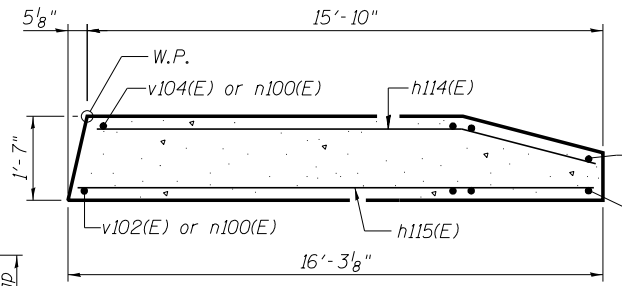


WINGWALL ELEVATION

Showing Reinforcement
East Wingwall shown looking West
(West Wingwall opposite hand, Similar)

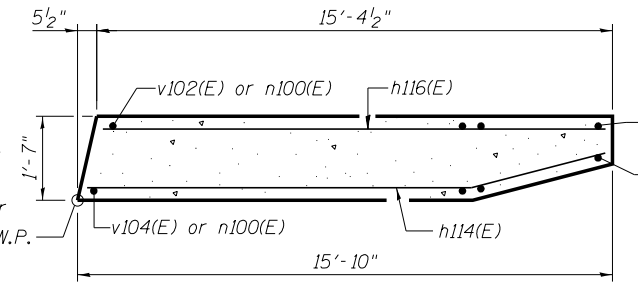


SECTION C-C



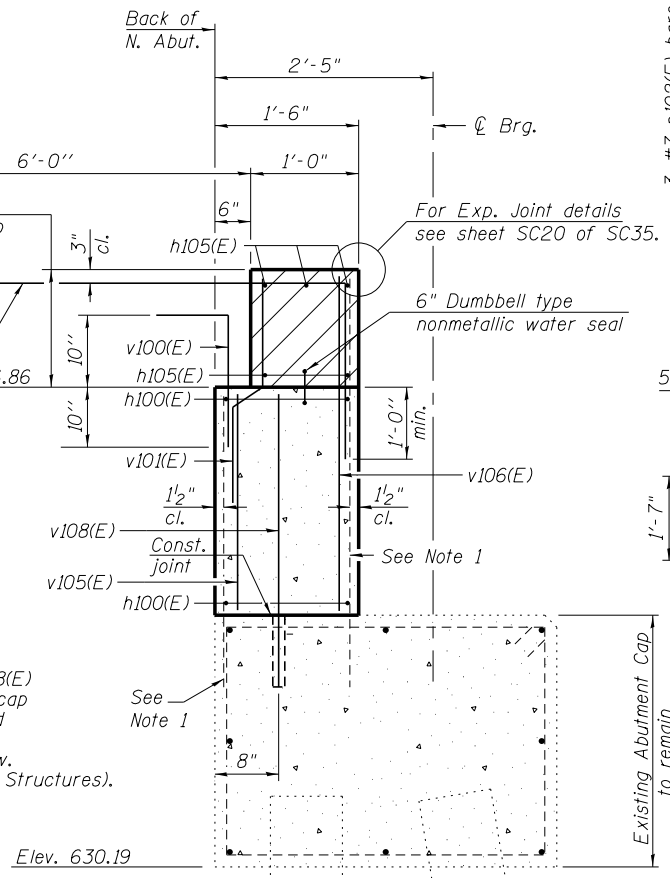
SECTION B-B

East Wingwall



SECTION B-B

West Wingwall



SEC. THRU N. ABUT.

MINIMUM EMBEDMENT DEPTHS

- #4 bar = 6"
- #5 bar = 9"
- #7 bar = 11"

NOTES:

1. Existing reinforcement shall be cleaned and incorporated into the new construction. Cost included with "Concrete Removal". Lap with v105(E), v106(E), v102(E) or v104(E) bars.
2. Hatched area to be poured after superstructure false work has been removed. Quantity of concrete included with "Concrete Superstructure".
3. Quantity of concrete in end post included with "Concrete Superstructure" on sheet SC16 of SC35.
4. For Concrete Encasement details, see sheet SC32 of SC35.
5. See Std. 631031 for Traffic Barrier Terminal Type 6 Connection.

benesch
engineers · scientists · planners

Alfred Benesch & Company
205 North Michigan Avenue, Suite 2400
Chicago, Illinois 60601
312-565-0450 Job No. 10093

FILE NAME = 0162455.60J16.031_abutmoddet-3.dgn

USER NAME = tjjenicke	DESIGNED - JDM	REVISD -
PLOT SCALE =	CHECKED - RDK/TPS	REVISD -
PLOT DATE = 12/28/2013	DRAWN - MAK/RMG	REVISD -
	CHECKED - JDM/TPS	REVISD -

STATE OF ILLINOIS
DEPARTMENT OF TRANSPORTATION

NORTH ABUTMENT MODIFICATION DETAILS (3 OF 3)
STRUCTURE NO. 016-2455

SHEET NO. SC31 OF SC35 SHEETS

F.A.P. RTE. 372	SECTION 2013-038B-R	COUNTY COOK	TOTAL SHEETS 821	SHEET NO. 357
CONTRACT NO. 60J16			ILLINOIS FED. AID PROJECT	

X:\100005\10093\Eng_Docs_Phase_1\11\SN_016_2454_2455_1st_Ave_cover_AT&SF_PRR\Final\0162455-60J16_031_abutmoddet-3.dgn 6/23/2014 2:37:10 PM