

F.A.P. NO.	SECTION	EXPRESSIONS	TOTAL SHEETS	SHEET NO.
0606-627 VB			62	24
STA. TO STA.				
FOR ROAD DIST. NO. 7				
FOR AID PROJECT				

BILL OF REINFORCEMENT

BAR NO.	SIZE	LENGTH	SHAPE
h1	10	5	4'3
h2	10	5	4'6
h3	4	4	3'2
h4	4	4	6'10
h5	12	4	10'6
h6	8	4	11'7
h7	4	4	9'3
h8	12	5	30'9
h9	2	4	35'0
h10	8	6	27'8
h11	8	6	4'0
h12	8	4	9'0
h1	9	4	7'9
h2	9	4	8'7
h1	6	7	10'0
h2	6	7	9'3
h3	8	7	25'5
h4	8	7	36'0
h5	16	4	9'5
h6	52	4	15'1
h1	8	6	7'11
h2	35	4	5'6
h3	6	4	4'3
h4	6	4	5'0
h6	54	4	3'2
h1	16	4	7'6
h2	16	4	6'9
h3	20	4	6'2
h4	108	4	5'3
h5	12	4	6'0

ABUTMENT E.B. QUANTITIES

CLASS X CONCRETE	CU. YDS.	606
REINFORCING BARS	LBS.	4,150
PILES 12 B P 53	LIN. FT.	480

15 STEEL PILES 12 B P 53 AT 32' = 480 LIN. FT.

**ILLINOIS DIVISION OF HIGHWAYS
SOUTHWEST EXPRESSWAY**

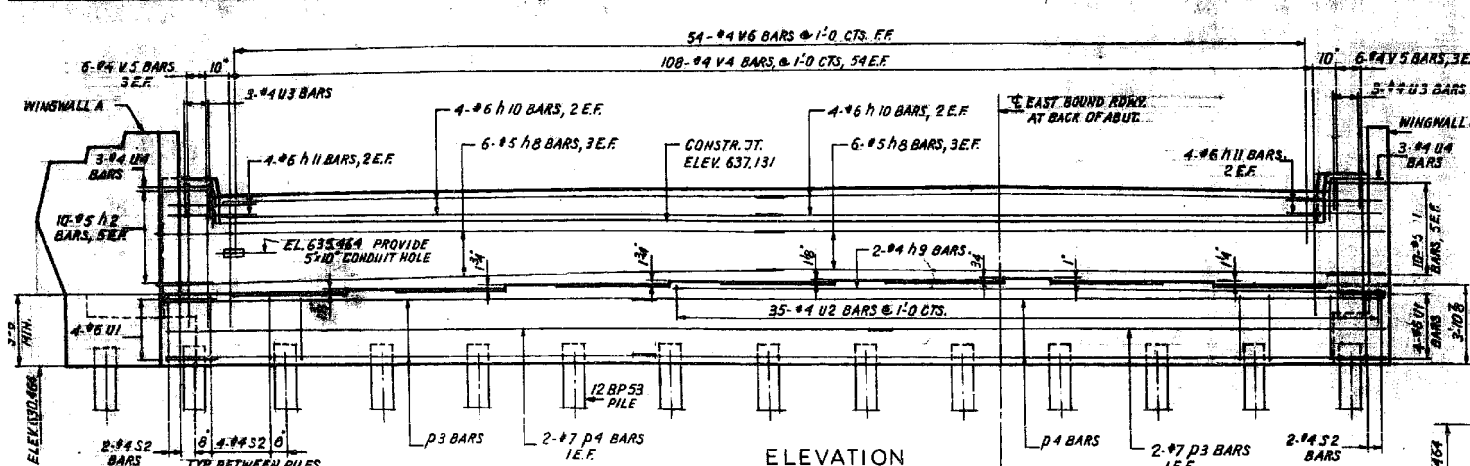
F.A. RT. 133
LAWDALE AVE. STRUCTURE OVER
A.T. & S.F. RY. CAN. RR. & B.&O. CT. R.R.
SECTION 0606-627 VB
ABUTMENT EAST BOUND

SCALE: 1/8" = 1'-0"
DATE: 1-20-66

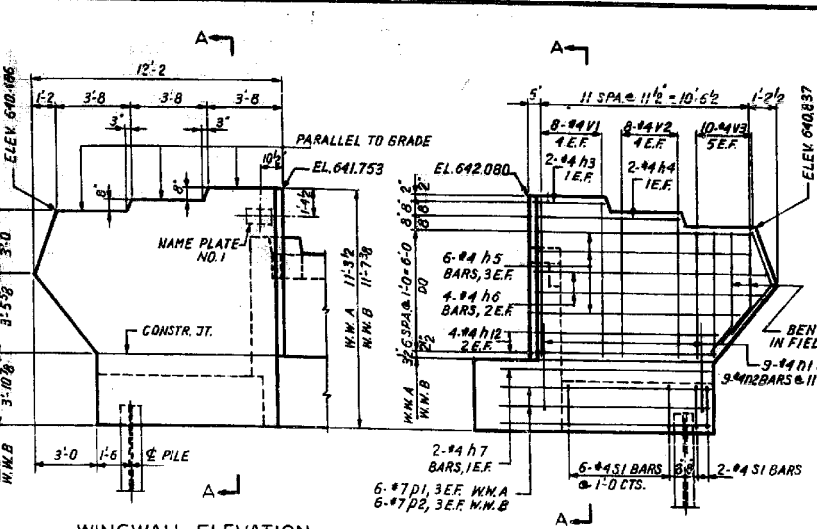
DRAWN BY J.W.
CHECKED BY L.S.

FOR INFORMATION ONLY

F.A.P. RTE.	SECTION	COUNTY	TOTAL SHEETS	SHEET NO.
372	2013-038B-R	COOK	821	364
CONTRACT NO. 60J16				
ILLINOIS FED. AID PROJECT				

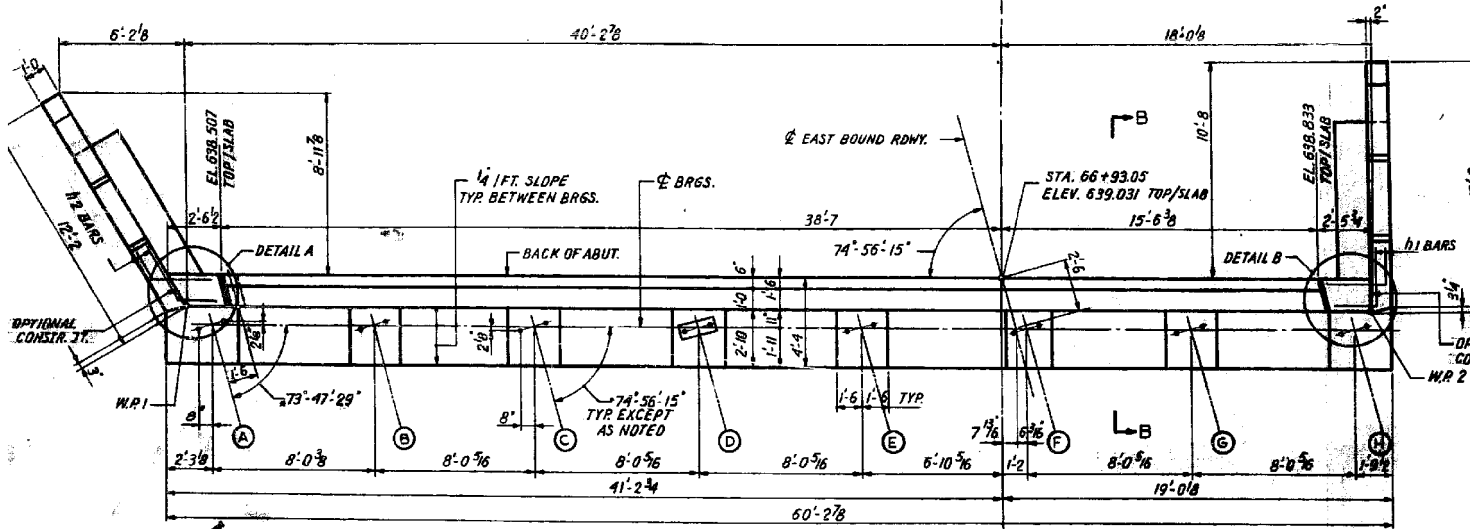


ELEVATION

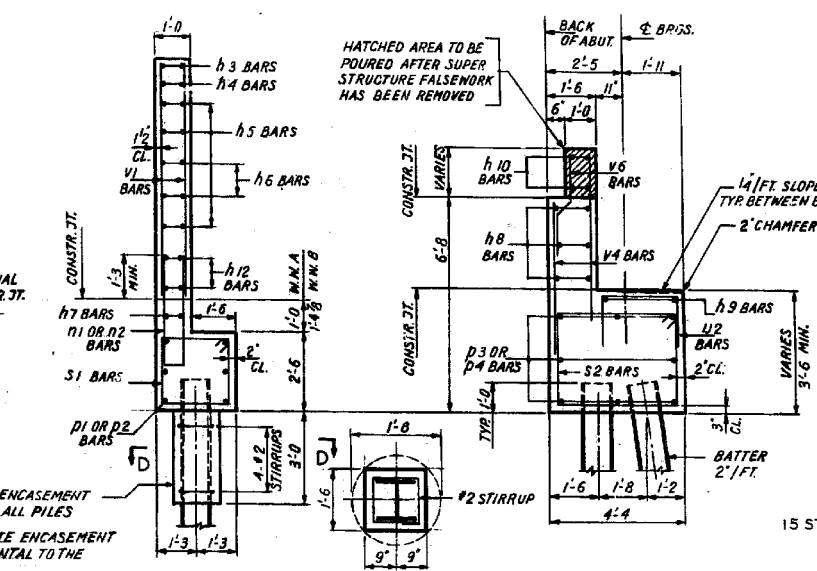


WINGWALL ELEVATION

WINGWALL REINFORCEMENT



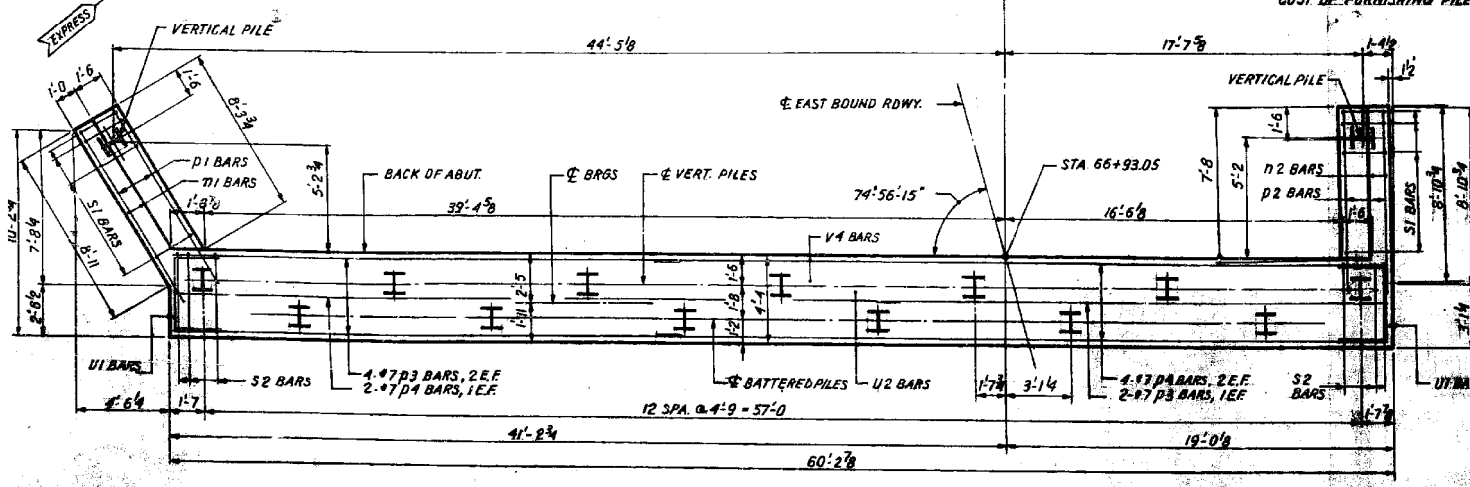
TOP VIEW



SECTION A-A

SECTION D-D

SECTION B-B



FOOTING PLAN

BEARING SEAT ELEVATIONS AT BEAMS							
A	B	C	D	E	F	G	H
633.964	634.110	634.256	634.402	634.548	634.694	634.840	634.986

REVISIONS

NAME	DATE



Alfred Benesch & Company
205 North Michigan Avenue, Suite 2400
Chicago, Illinois 60601
312-565-0450 Job No. 10093

USER NAME	DESIGNED	REVISIONS
tjanicke	RDK	
	JDM	
	MAK	
	JDM	

**STATE OF ILLINOIS
DEPARTMENT OF TRANSPORTATION**

**EXISTING PLAN INFORMATION (3 OF 14)
STRUCTURE NO. 016-2455**

SHEET NO. SCX3 OF SCX14 SHEETS

X:\100005\10093\Eng_Docs_Phase_II\SN 016-2454-2455-1st.Ave.cover-AT&S_PRR\Final\0162455-60J16-038-existstpln.dgn 6/23/2014 2:37:38 PM