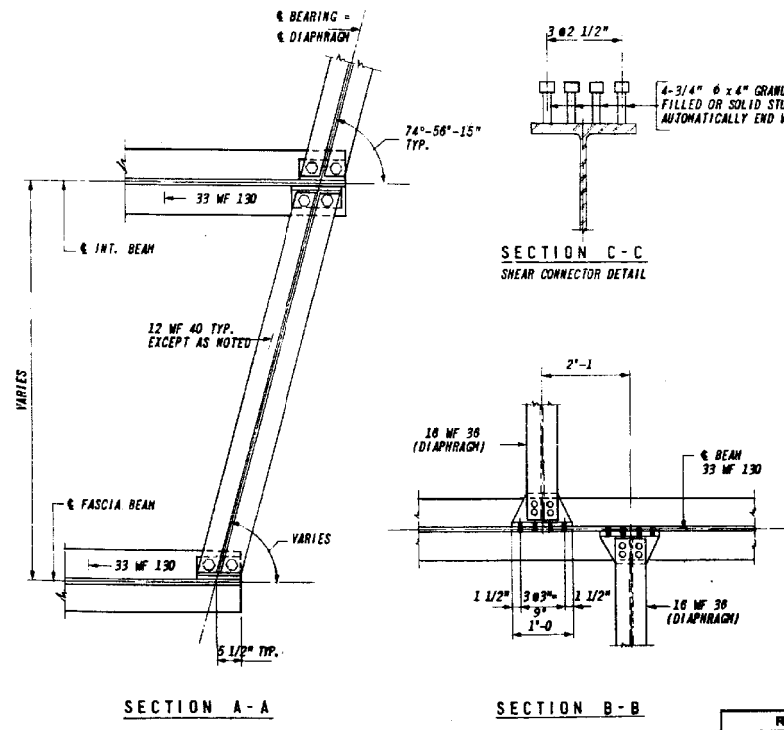
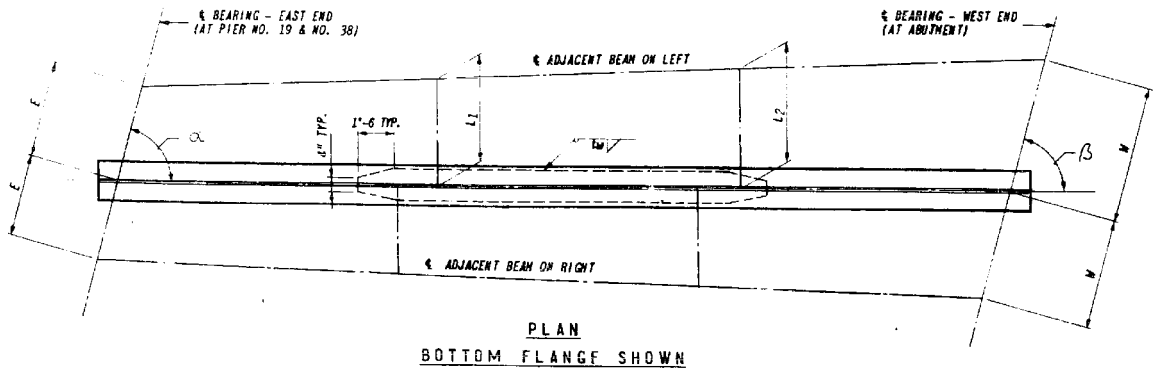
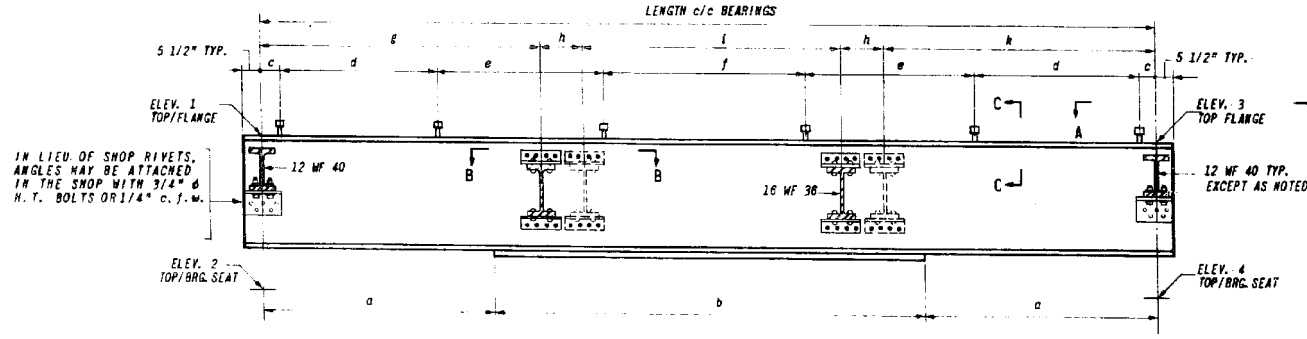


P.A. SHEET	SECTION	EXPRESSWAY	TOTAL SHEETS	SHEET NO.
128	0606-627 VB	SOUTHWEST	324	32A
BYA		TO BYA		
FED. ROAD DIST. NO. 1		ILLINOIS		FED. AID PROJECT

SPAN	BEAM	EAST END DATA			WEST END DATA			BEAM DATA																BEAM	REMARKS									
		E	ELEVATION		ANGLE	W	ELEVATION		ANGLE	BEAM SIZE	LENGTH C/C BEARING	FLANGE PLATES		SHEAR CONNECTOR SPACING				INTERMEDIATE DIAPHRAGM SPACING				EAST END				WEST END								
			1	2	α		3	4	β			SIZE	WELD "L"	a	b	c	d	e	f	g	h	i	k	L1	L2	BRC. TYPE	SHIM PL.	BRC. TYPE	SHIM PL.					
SPAN NO. 4 EAST BOUND	A	8'-9 1/16"	637.567	633.985	73°-44'-51"	8'-0 3/8"	637.858	633.964	73°-44'-51"	33 WF 130	59'-5 5/8"	10"x3/4"	1/4"	18'-2 13/16"	27'-0"	8 13/16"	11 @ 1'-0"	-	24 @ 1'-6"	18'-2"	-	20'-4 9/16"	20'-5 1/16"	8'-10 15/16"	7'-4"	F1	-	E1	-	A				
	B	8'-0 5/16"	637.686	633.802	74°-56'-15"	8'-0 5/16"	638.004	634.110	74°-56'-15"	do	59'-1 1/2"	do	do	do	11'-0 3/4"	37'-0"	6 3/4"	25 @ 8"	10 @ 9"	18 @ 1'-0"	18'-4"	2'-1"	18'-3 1/2"	18'-4"	7'-9"	7'-9"	do	-	do	-	B			
	C	do	637.827	633.944	do	do	638.150	634.256	do	do	do	do	do	do	do	do	do	do	do	do	do	do	do	do	do	do	do	do	do	do	do	C		
	D	do	637.969	634.086	do	do	638.296	634.402	do	do	do	do	do	do	do	do	do	do	do	do	do	do	do	do	do	do	do	do	do	do	do	do	D	
	E	do	638.063	634.179	do	do	638.394	634.500	do	do	do	do	do	do	do	do	do	do	do	do	do	do	do	do	do	do	do	do	do	do	do	do	E	
	F	do	638.116	634.179	do	do	638.452	634.558	do	do	do	do	do	do	do	do	do	do	do	do	do	do	do	do	do	do	do	do	do	do	do	do	F	
	G	do	638.024	634.114	do	do	638.365	634.471	do	do	do	do	do	do	11'-0 3/4"	37'-0"	do	25 @ 6"	10 @ 9"	18 @ 1'-0"	18'-4"	2'-1"	18'-3 1/2"	do	do	do	do	do	5/8"	do	do	G		
SPAN NO. 4 WEST BOUND	H	8'-0 5/16"	637.913	634.029	74°-56'-15"	8'-0 5/16"	638.257	634.363	74°-56'-15"	33 WF 130	59'-1 1/2"	10"x3/4"	1/4"	18'-0 3/4"	27'-0"	6 3/4"	11 @ 1'-0"	-	24 @ 1'-6"	20'-5"	-	20'-4 1/2"	18'-4"	7'-9"	7'-9"	F1	-	E1	-	H				
	I	7'-8 3/16"	637.844	633.981	74°-56'-15"	7'-8 3/16"	638.209	634.316	74°-56'-15"	33 WF 130	59'-1 1/2"	10"x5/8"	1/4"	18'-0 3/4"	27'-0"	6 3/4"	11 @ 1'-0"	-	24 @ 1'-6"	18'-4"	-	20'-4 1/2"	20'-5"	7'-5"	7'-5"	F1	-	E1	-	I				
	J	7'-8 1/8"	637.924	634.041	do	7'-8 1/8"	638.293	634.399	do	do	do	do	do	do	11'-0 3/4"	37'-0"	do	25 @ 6"	10 @ 9"	18 @ 1'-0"	do	1'-11 15/16"	18'-3 1/2"	18'-4"	do	do	do	do	do	do	J			
	K	do	637.983	634.100	do	do	638.357	634.483	do	do	do	do	do	do	do	do	do	do	do	do	do	do	do	do	do	do	do	do	do	do	do	K		
	L	7'-8 1/8"	637.918	634.035	do	7'-8 1/8"	638.296	634.402	do	do	do	do	do	do	do	do	do	do	do	do	do	do	do	do	do	do	do	do	do	do	do	do	L	
	M	do	637.812	633.929	do	do	638.194	634.300	do	do	do	do	do	do	do	do	do	do	do	do	do	do	do	do	do	do	do	do	do	do	do	do	M	
	N	do	637.649	633.765	do	do	638.035	634.141	do	do	do	do	do	do	do	do	do	do	do	do	do	do	do	do	do	do	do	do	do	do	do	do	N	
O	7'-8 3/16"	637.485	633.602	74°-56'-15"	7'-8 3/16"	637.875	633.982	74°-56'-15"	do	59'-1 1/2"	do	do	do	11'-0 3/4"	37'-0"	6 3/4"	25 @ 6"	11 @ 9"	18 @ 1'-0"	18'-4"	1'-11 15/16"	18'-3 1/2"	18'-4"	do	do	do	do	do	do	do	O			
P	4'-1 5/8"	637.397	633.514	79°-21'-57"	8'-9 3/8"	637.693	633.799	79°-21'-57"	33 WF 130	58'-1 1/8"	10"x5/8"	1/4"	15'-6 1/2"	27'-0 1/8"	9"	11 @ 1'-0"	11 @ 1'-6"	1 @ 1'-7 1/8"	19'-5 3/8"	-	20'-5 1/4"	18'-2 5/16"	5'-5 15/16"	7'-0 7/8"	F1	-	E1	-	P					



STRUCTURAL STEEL SPANS NO. 4 EAST BOUND & WEST BOUND
 FRAMING STEEL SPAN NO. 4 E.B. & W.B. . . . 157,505 LBS.
 STUDS 4,270 LBS.
 BEARING DEVICES (*) 8,305 LBS.
 FURNISHING AND ERECTING STRUCTURAL STEEL . . . 170,080 LBS.

NOTE: (*) SEE SHEET: * BEARING DEVICES *

AS BUILT
 This sheet (32A) replaces sheet (32) of the contract drawings. All revisions made by consultant. (R.R.E. 5-29-64)

REVISIONS	
NAME	DATE

DESIGNED	RDK	DATE	5-6-64
CHECKED	JDM	DATE	5-6-64
DRAWN	MAK	DATE	5-6-64
CHECKED	JDM	DATE	5-6-64

ILLINOIS DIVISION OF HIGHWAYS
 SOUTHWEST EXPRESSWAY
 F.A. RT. 133
 LAWNDALE AVE. STRUCTURE OVER
 A.T. & S.F. RR., C.&W. RR. & B.&O.C.T. RR.
 SECTION 0606-627 VB
 SUMMARY OF BEAMS SPAN NO. 4 E.B. & W.B.
 DATE: 11-20-63
 DRAWN BY A.S.
 CHECKED BY L.B.

benesch
 engineers - scientists - planners
 Alfred Benesch & Company
 205 North Michigan Avenue, Suite 2400
 Chicago, Illinois 60601
 312-565-0450 Job No. 10093

FILE NAME =	USER NAME = tjenicke	DESIGNED - RDK	REVISIONS -
0162455.60J16.041.existplan.dgn	PLOT SCALE =	CHECKED - JDM	REVISIONS -
	PLOT DATE = 12/20/2013	DRAWN - MAK	REVISIONS -
		CHECKED - JDM	REVISIONS -

STATE OF ILLINOIS
 DEPARTMENT OF TRANSPORTATION

EXISTING PLAN INFORMATION (6 OF 14)
 STRUCTURE NO. 016-2455
 SHEET NO. SCX6 OF SCX14 SHEETS

FOR INFORMATION ONLY

F.A.P. R.T.E.	SECTION	COUNTY	TOTAL SHEETS	SHEET NO.
372	2013-038B-R	COOK	821	367
CONTRACT NO. 60J16				ILLINOIS FED. AID PROJECT

X:\100005\10093\Eng_Docs_Phase_1\11\SN_016_2454_2455_1st_Ave_cover_AT&SF_RR_Final\0162455-60J16_041.existplan.dgn 2:38:12 PM 6/23/2014