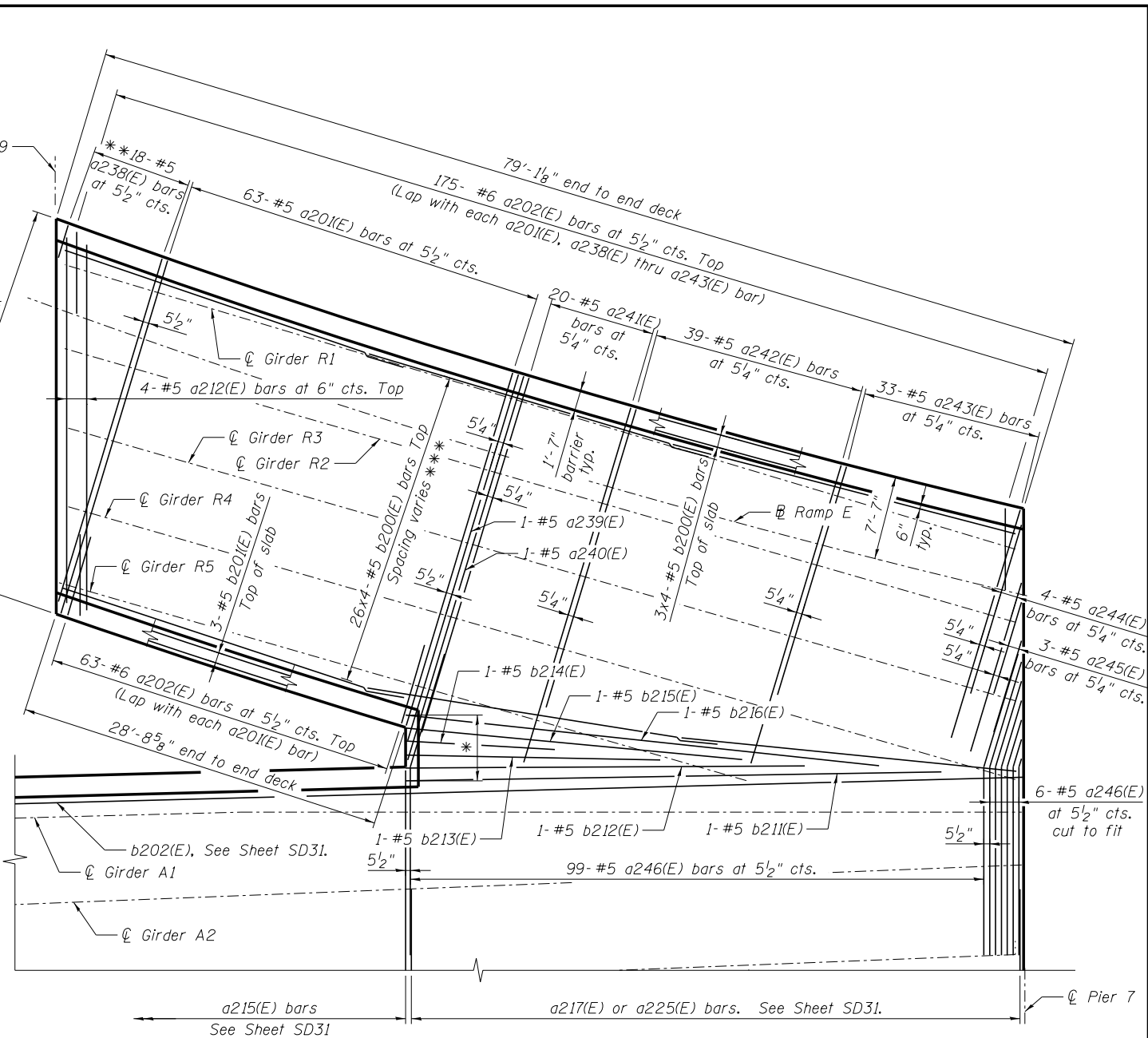


BOTTOM PLAN - SPAN 3E

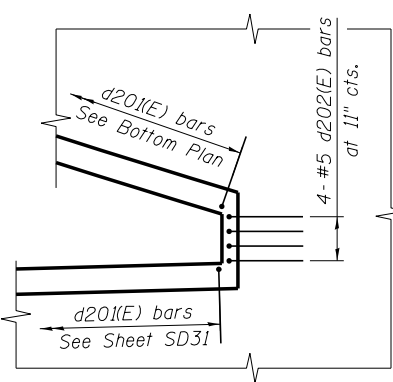


TOP PLAN - SPAN 3E

BAR a2XX(E) DATA TABLE

(Pier 39)

Bay	Bar
R1-R2	a247(E)
R2-R5	a209(E)



GORE PLAN

- * equal spacing
- ** See cut diagram on sheet SD45
- *** 12" at Pier 39
- 8 3/4" at Pier 7
- Δ Cut to fit in field

FILLET REINFORCEMENT DATA TABLE

Girder	Start Sta.	End Sta.	b2XX(E) bars	d2XX(E) bars
R1	200+13.13	200+73.57	2x2-#4 b218(E)	61-#4 d203(E)
R2	200+21.50	200+51.48	2-#4 b218(E)	31-#4 d203(E)

For Fillet Reinforcement detail, see Sheet SD55.

NOTES:

1. For Superstructure Details and Bar Bends, see Sheet SD45.
2. For Bill of Material, see Sheet SD46.
3. Bars indicated thus 20 x 3-#5 etc. indicates 20 lines of bars with 3 lengths per line.
4. Ramp E Span 3E reinforcement included in Unit A Bill of Material.
5. Dimensions are based on a Rolled Rail Strip Seal Joint. If the Contractor elects to use the Welded Rail Strip Seal Joint, deck dimensions may require adjustments to satisfy the details on Sheet SD49.

MINIMUM BAR LAP

(Slab and Parapet)
 #4 bar = 2'-7"
 #5 bar = 3'-3"
 #6 bar = 3'-10"



Alfred Benesch & Company
 205 North Michigan Avenue, Suite 2400
 Chicago, Illinois 60601
 312-565-0450 Job No. 10093

FILE NAME =	USER NAME = ksnider	DESIGNED - AWH	REVISED -
0162457.60J16.032.Deck.Plan.Unit.A.dgn	PLOT SCALE =	CHECKED - MFH	REVISED -
	PLOT DATE = 12/20/2013	DRAWN - RMG/KMS	REVISED -
		CHECKED - MFH	REVISED -

**STATE OF ILLINOIS
 DEPARTMENT OF TRANSPORTATION**

**DECK PLAN UNIT A 2 OF 2
 STRUCTURE NO. 016-2457**

SHEET NO. SD32 OF SD83 SHEETS

F.A.P. RTE.	SECTION	COUNTY	TOTAL SHEETS	SHEET NO.
372	2013-038B-R	COOK	821	407
CONTRACT NO. 60J16			ILLINOIS FED. AID PROJECT	

Y:\chicago\100005\10093\Eng_Docs\Phase_1\15N_016_2456_2457_1st_Ave_over_Des_Plaines_River_Valley\Final\0162457_Final\0162457_Deck_Plan_Unit_A.dgn 3:43:02 PM 8/6/2014