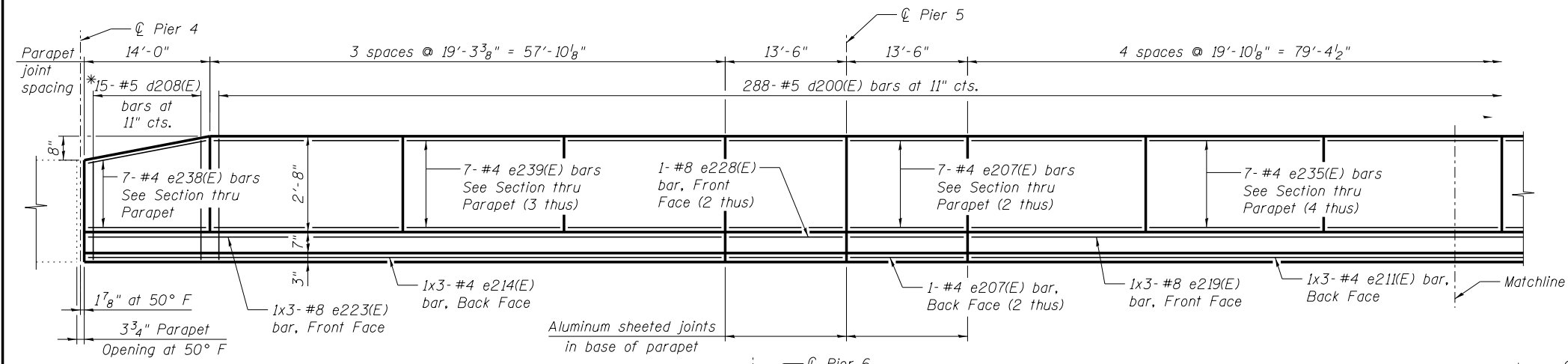
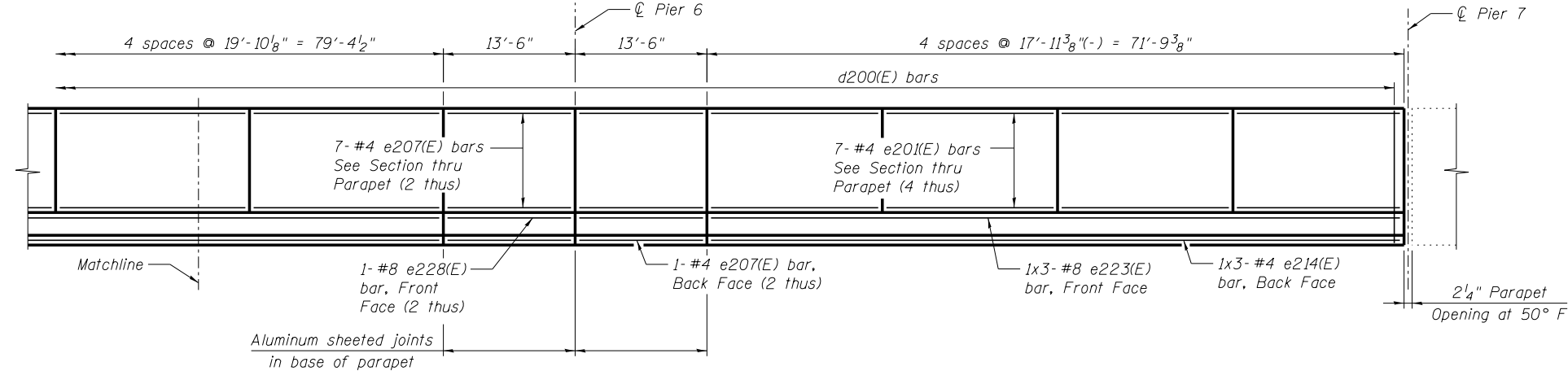
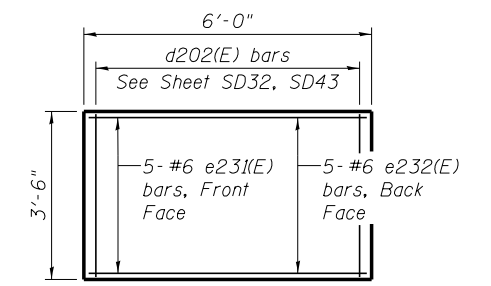


**INSIDE ELEVATION OF SB IL-171 WEST PARAPET**

\* Cut and bend in field to fit. Front (inside) leg shall terminate with 5 7/8" long 90° hook similar to d200(E) bars.



**INSIDE ELEVATION OF GORE PARAPET**



**INSIDE ELEVATION OF SB IL-171 EAST PARAPET**

(Reflected View Shown)

**MINIMUM LAP**

(Parapet)  
#4 bar = 2'-0"  
#8 bar = 5'-2"

**NOTES:**

- All dimensions shown are along the toe of the parapet (gutterline).
- Bars indicated thus 1x3- #8 etc. indicates 1 line of bars with 3 lengths per line.
- See Sheet SD43 for cross section thru parapet.

**benesch**  
engineers · scientists · planners  
Alfred Benesch & Company  
205 North Michigan Avenue, Suite 2400  
Chicago, Illinois 60601  
312-565-0450 Job No. 10093

FILE NAME =	USER NAME = ksnider	DESIGNED - AWH	REVISED -
		CHECKED - MFH	REVISED -
		DRAWN - AWH	REVISED -
		CHECKED - MFH	REVISED -

**STATE OF ILLINOIS**  
**DEPARTMENT OF TRANSPORTATION**

**PARAPET ELEVATION UNIT A**  
**STRUCTURE NO. 016-2457**

F.A.P. RTE.	SECTION	COUNTY	TOTAL SHEETS	SHEET NO.
372	2013-038B-R	COOK	821	415
CONTRACT NO. 60J16			ILLINOIS FED. AID PROJECT	

SHEET NO. SD40 OF SD83 SHEETS

Y:\chicago\100005\10093\Eng\_Docs\Phase\_1\1\SN\_016-2456-2457-1st-Ave-over-Des-Plaines-River\_Valley\Final\0162457-Final\0162457-040-Parapet-Details-Unit-A.dgn 3:45:28 PM 8/6/2014