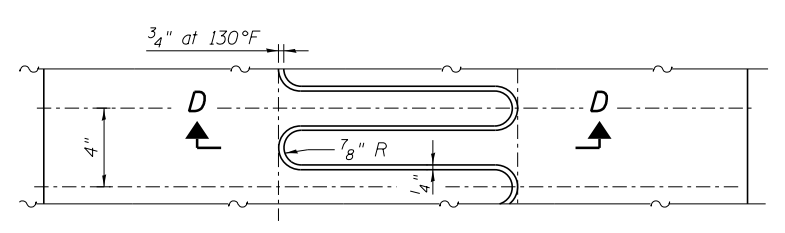
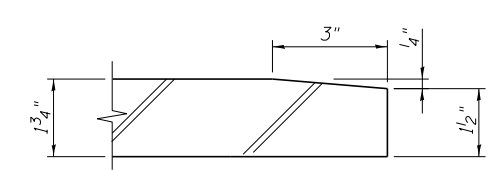


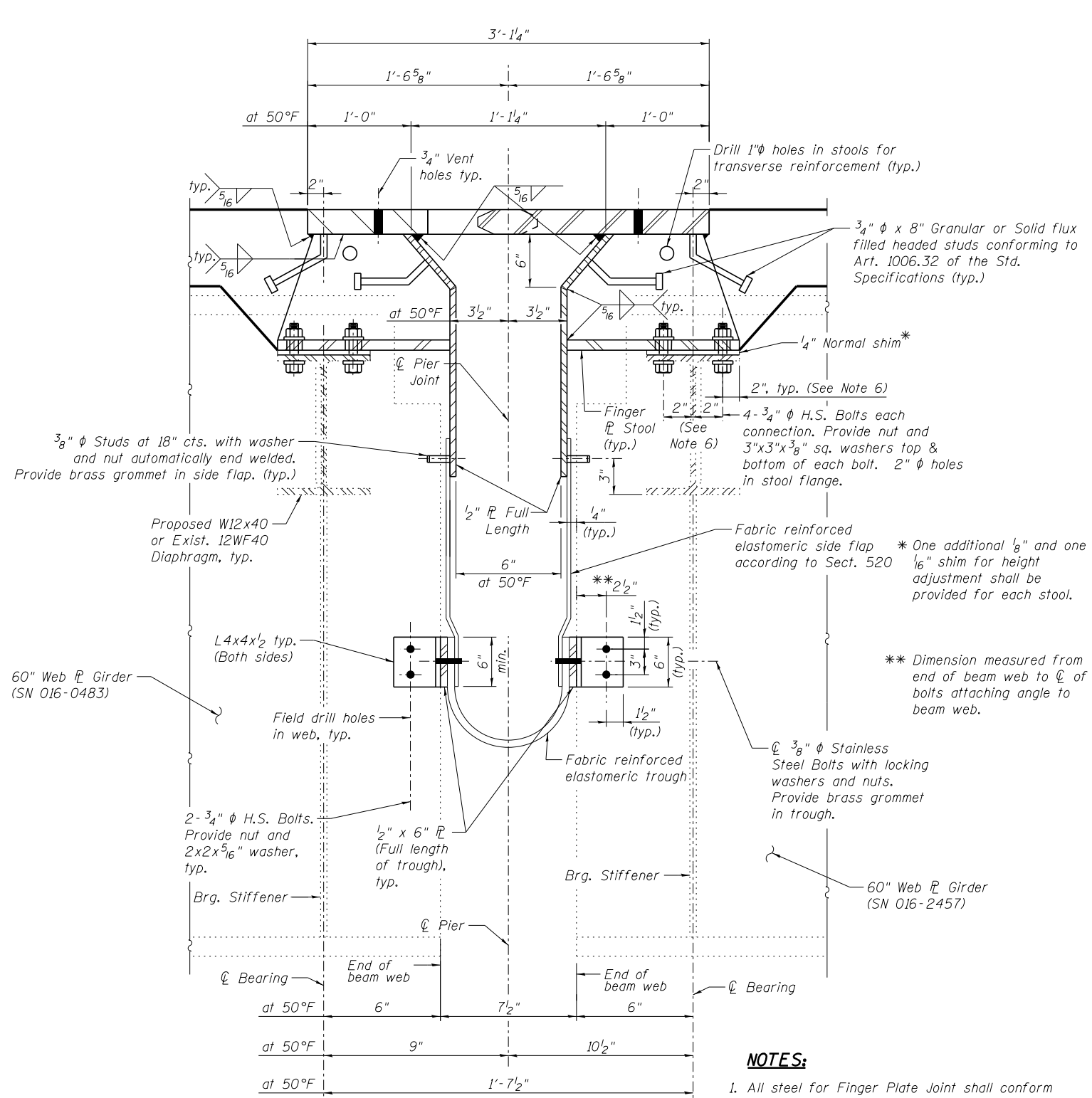
PLAN OF FINGER PLATE AT PIER 4



FINGER DETAIL



SECTION D-D



SECTION E-E  
(All dimensions shown along IL-171)

**NOTES:**

1. All steel for Finger Plate Joint shall conform to AASHTO M270 specification, Gr. 50 (NTR).
2. Design expansion at Pier 4  $\pm 2.83$ "
3. For View A-A, see Sheet SD51.
4. Load carrying components designated "NTR" shall conform to the Impact Testing Requirement, Zone 2.
5. Finger plate expansion joints shall be assembled in their final relative position with the ends in place for shop inspection and acceptance.
6. Hole spacing and dimensions for proposed stools on existing cross frames shall be field verified.

**benesch**  
engineers · scientists · planners

Alfred Benesch & Company  
205 North Michigan Avenue, Suite 2400  
Chicago, Illinois 60601  
312-565-0450 Job No. 10093

FILE NAME =	USER NAME = ksnider	DESIGNED - JDM/DTS	REVISED -
		CHECKED - LRB	REVISED -
		DRAWN - MAK	REVISED -
		CHECKED - LRB/JLS	REVISED -
PLOT DATE = 12/20/2013			

STATE OF ILLINOIS  
DEPARTMENT OF TRANSPORTATION

FINGER PLATE DETAILS (1 OF 2)  
STRUCTURE NO. 016-2457

F.A.P. R.E.	SECTION	COUNTY	TOTAL SHEETS	SHEET NO.
372	2013-038B-R	COOK	821	425
				CONTRACT NO. 60J16
ILLINOIS FED. AID PROJECT				

Y:\chicago\100005\100093\Eng\_Docs\_Phase\_1\11\SN\_016-2456-2457\_Ist-Ave-over-Plaines-River\_Valley\Final\0162457-Final-Plate-Dtl.dgn 3:47:45 PM 8/6/2014