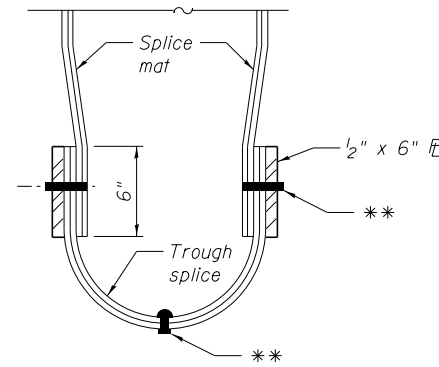
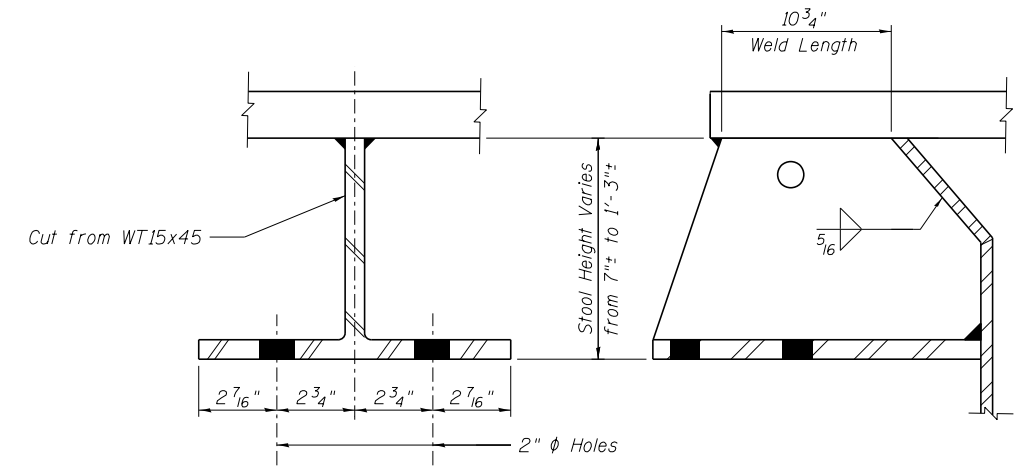


**TROUGH SPLICE DETAIL**



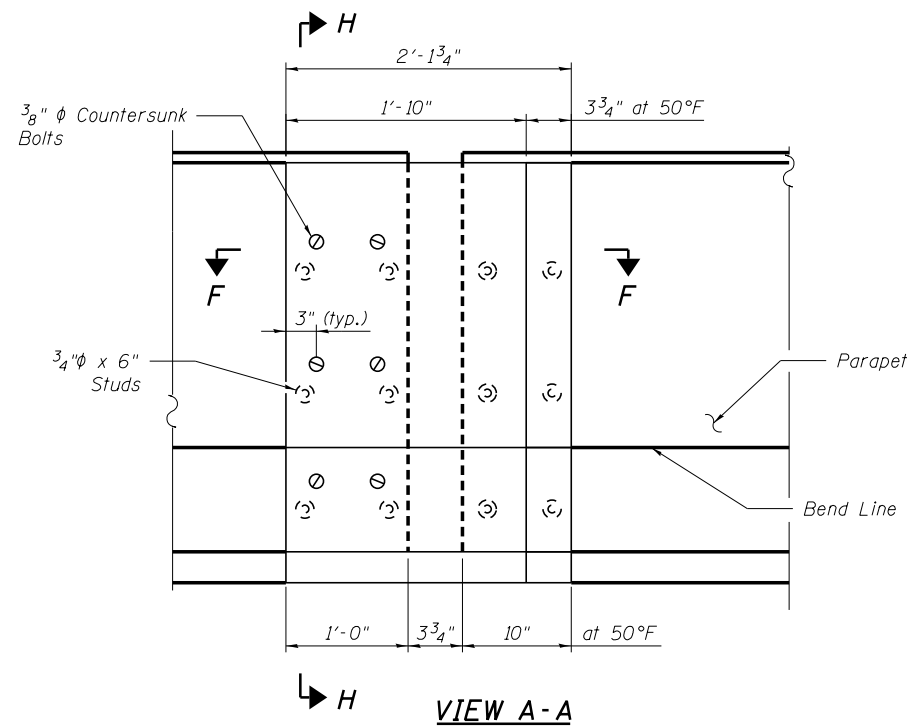
**SECTION I-I**

\*\* 3/8"  $\phi$  Stainless Steel bolts w/ washers & nuts. Provide brass grommet in trough.

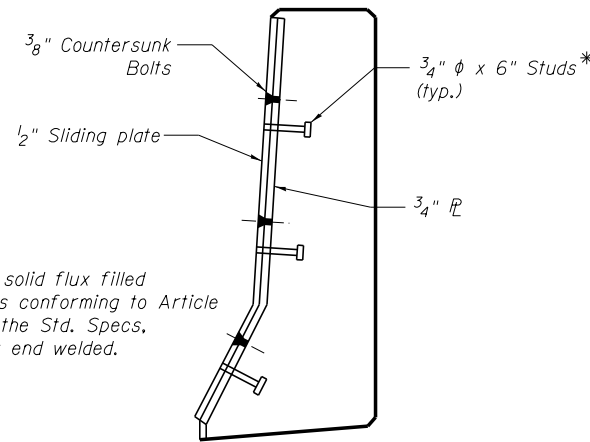


**FINGER PLATE STOOL DETAIL**

(Weld length shown where Stool bears on Girder)  
(Contractor shall field verify stool heights)

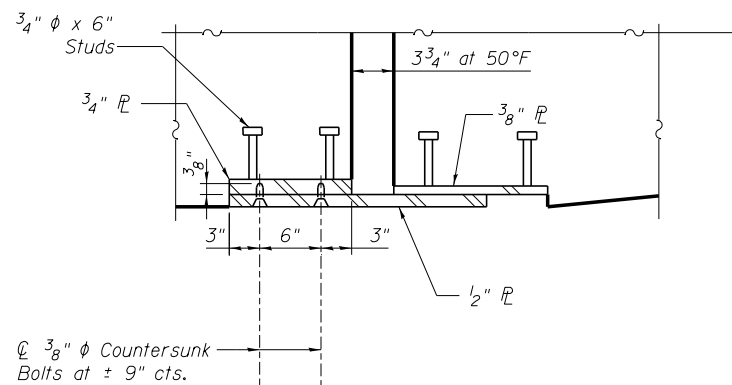


**VIEW A-A**



**SECTION H-H**

\* Granular or solid flux filled headed studs conforming to Article 1006.32 of the Std. Specs. automatically end welded.



**SECTION F-F**

**NOTES:**

1. Finger Plate Expansion Joint, 4" refers to the joint at Pier 4.
2. Cost of field drilling required for Finger Plate installation included with "Finger Plate Expansion Joint" of the dimension specified.
3. Finger plate expansion joints shall be assembled in their final relative position with the ends in place for shop inspection and acceptance.

**BILL OF MATERIAL**

ITEM	UNIT	QUANTITY
Finger Plate Expansion Joint, 4"	Foot	52.0

**benesch**  
engineers · scientists · planners  
Alfred Benesch & Company  
205 North Michigan Avenue, Suite 2400  
Chicago, Illinois 60601  
312-565-0450 Job No. 10093

FILE NAME =	USER NAME = ksnider	DESIGNED - JDM/DTS	REVISED -
0162457.60J16.051.Finger.Plate.Dtl.2.dgn		CHECKED - LRB	REVISED -
	PLOT SCALE =	DRAWN - MAK	REVISED -
	PLOT DATE = 12/20/2013	CHECKED - LRB/JLS	REVISED -

**STATE OF ILLINOIS  
DEPARTMENT OF TRANSPORTATION**

**FINGER PLATE DETAILS (2 OF 2)  
STRUCTURE NO. 016-2457**

SHEET NO. SD51 OF SD83 SHEETS

F.A.P. RTE.	SECTION	COUNTY	TOTAL SHEETS	SHEET NO.
372	2013-038B-R	COOK	821	426
CONTRACT NO. 60J16			ILLINOIS FED. AID PROJECT	

Y:\chicago\100005\10093\Eng\_Docs\_Phase\_1\1\SN\_016\_2456\_2457\_1st\_Ave\_over\_Des\_Plaines\_River\_Valley\Final\0162457\_60J16\_051.Finger.Plate.Dtl.2.dgn 3:47:57 PM 8/6/2014