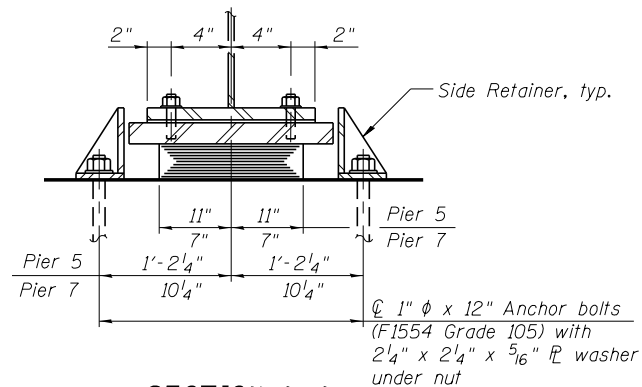


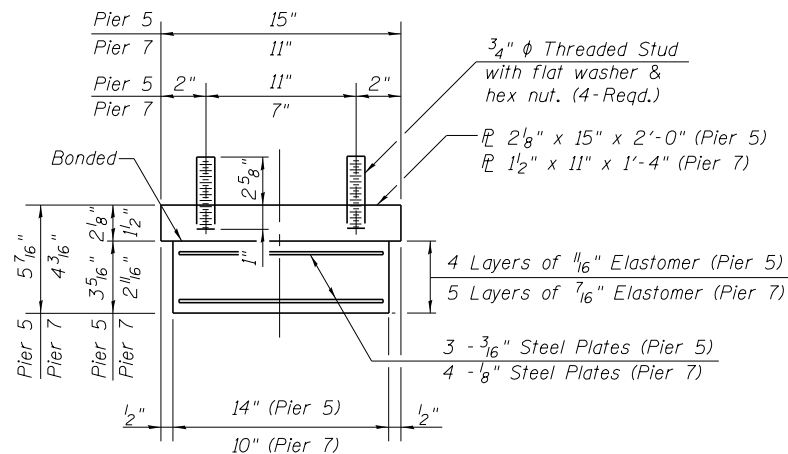
ELEVATION AT PIERS 5 & 7



SECTION A-A

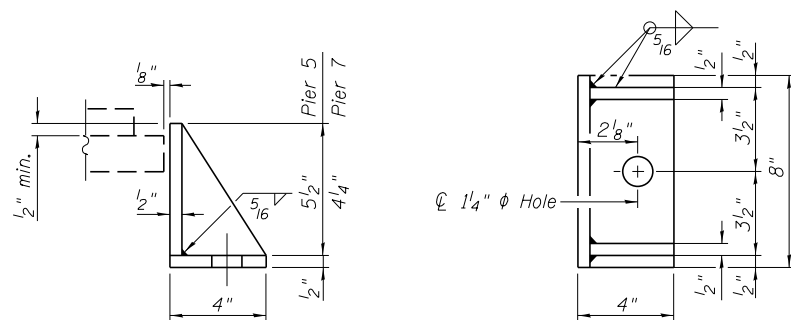
TYPE I ELASTOMERIC EXP. BRG.

(2 required, each pier)



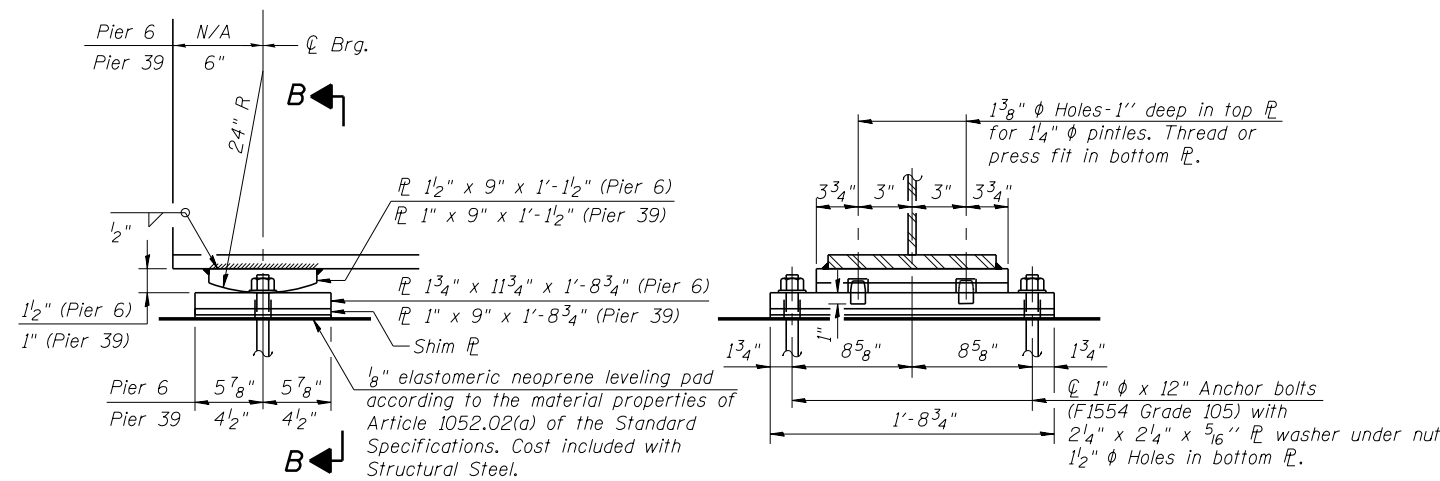
BEARING ASSEMBLY

Note:
Shim plates shall not be placed under Bearing Assembly.



SIDE RETAINER

Equivalent rolled angle with stiffeners will be allowed in lieu of welded plates.

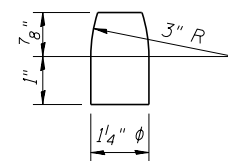


ELEVATION AT PIERS 6 & 39

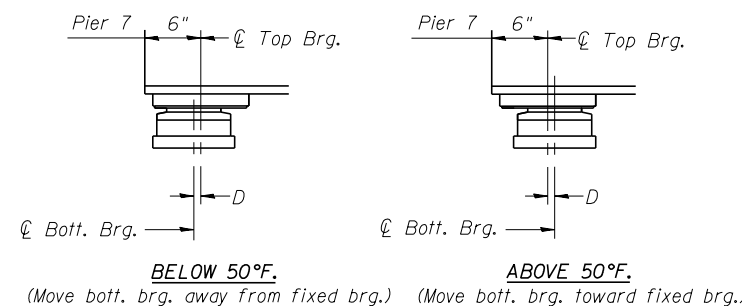
(2 required @ Pier 6, 1 required @ Pier 39 for new beam R5)

SECTION B-B

FIXED BEARING



PINTLE



SETTING ANCHOR BOLTS AT EXP. BRG.

D=1/8" per each 100' of expansion for every 15° temp. change from the normal temp. of 50°F.

Notes:
Two 1/8" adjusting shims shall be provided for each bearing in addition to all other plates or shims and placed as shown on bearing details.
Anchor bolts shall be ASTM F1554 all-thread (or an Engineer-approved alternate material) of the grade(s) and diameter(s) specified. The corresponding specified grade of AASHTO M314 anchor bolts may be used in lieu of ASTM F1554.
Anchor bolts at fixed bearings may be either cast in place or installed in holes drilled after the supported member is in place.
Anchor bolts for side retainers may be cast in place or installed in holes drilled before or after members are in place.
Drilled and set anchor bolts shall be installed according to Article 521.06 of the Standard Specifications.
Side retainers and other steel members required for the elastomeric bearing assembly shall be included in the cost of Elastomeric Bearing Assembly, Type I.
Steel members and pintles required for fixed bearing assemblies shall be included with cost of furnishing and erecting structural steel.
The structural steel plates of the elastomeric bearing assemblies shall meet the requirements of AASHTO M270 Grade 50.
The structural steel plates and pintles of the fixed bearing assemblies shall meet the requirements of AASHTO M270 Grade 50.

BILL OF MATERIAL

Item	Unit	Total
Elastomeric Bearing Assembly Type I	Each	4
Anchor Bolts, 1"	Each	14

FILE NAME =	USER NAME = ksnider	DESIGNED - AAY	REVISED -
		CHECKED - AJK	REVISED -
		DRAWN - RMG	REVISED -
		CHECKED - AJK	REVISED -
PLOT SCALE =			
PLOT DATE = 12/20/2013			

F.A.P. RTE.	SECTION	COUNTY	TOTAL SHEETS	SHEET NO.
372	2013-038B-R	COOK	821	445
CONTRACT NO. 60J16			ILLINOIS FED. AID PROJECT	