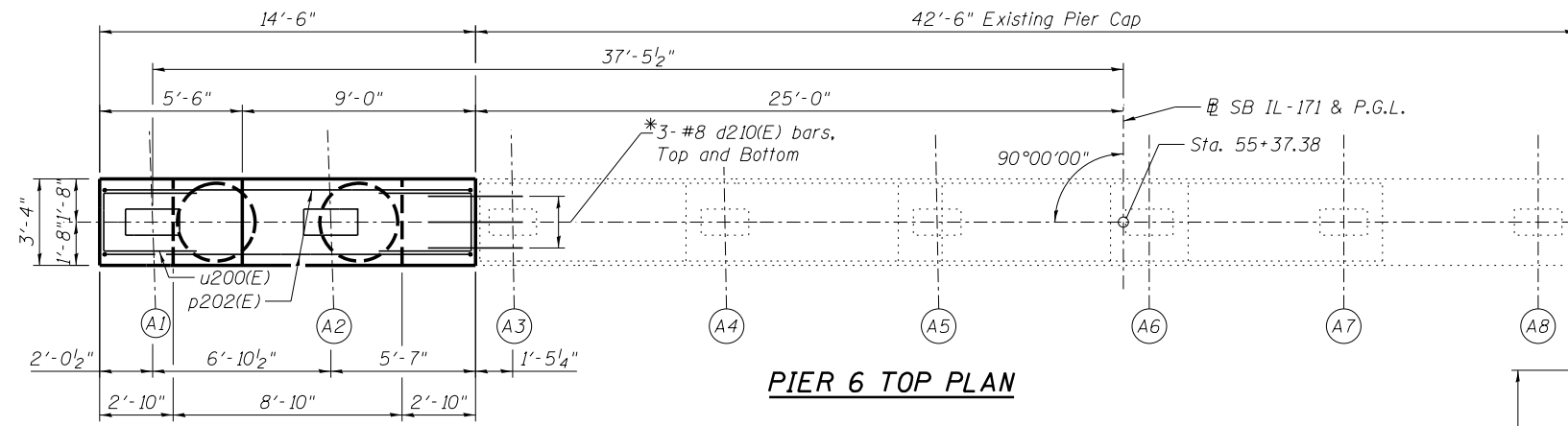
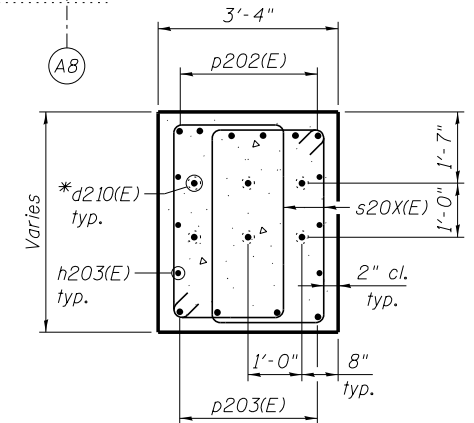


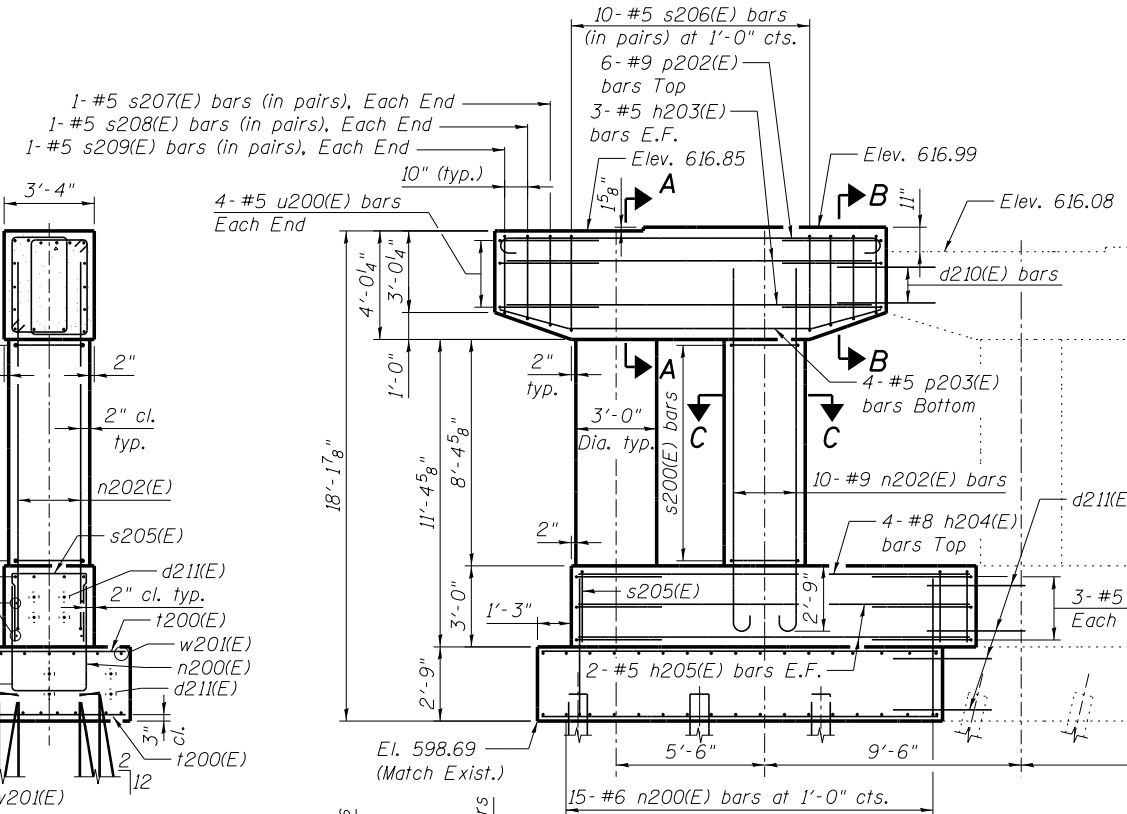
SECTION A-A



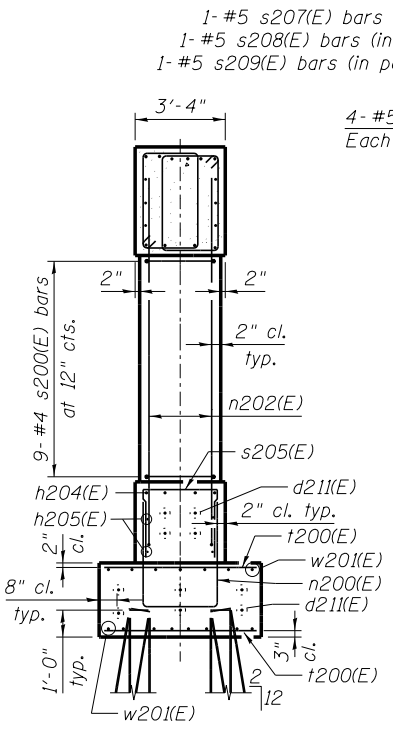
PIER 6 TOP PLAN



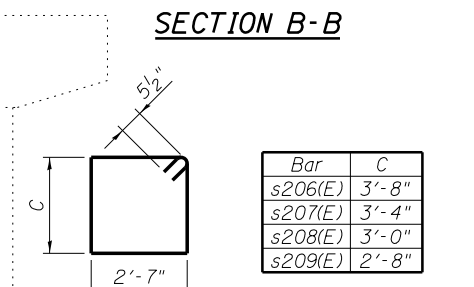
SECTION B-B



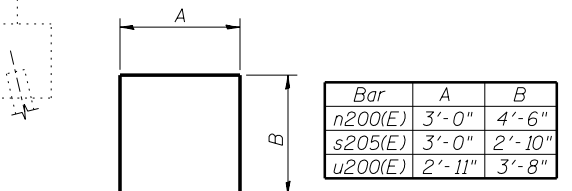
PIER 6 ELEVATION
(Looking Upstation)



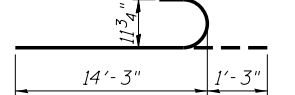
END VIEW



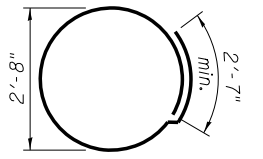
s206(E) THRU s209(E) BARS



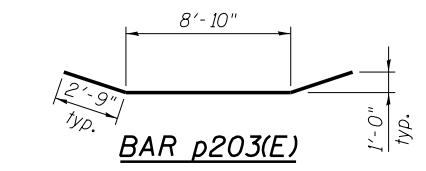
BARS n200(E), s205(E) AND u200(E)



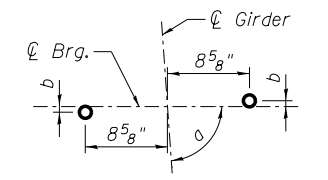
BAR n202(E)



BAR s200(E)



BAR p203(E)

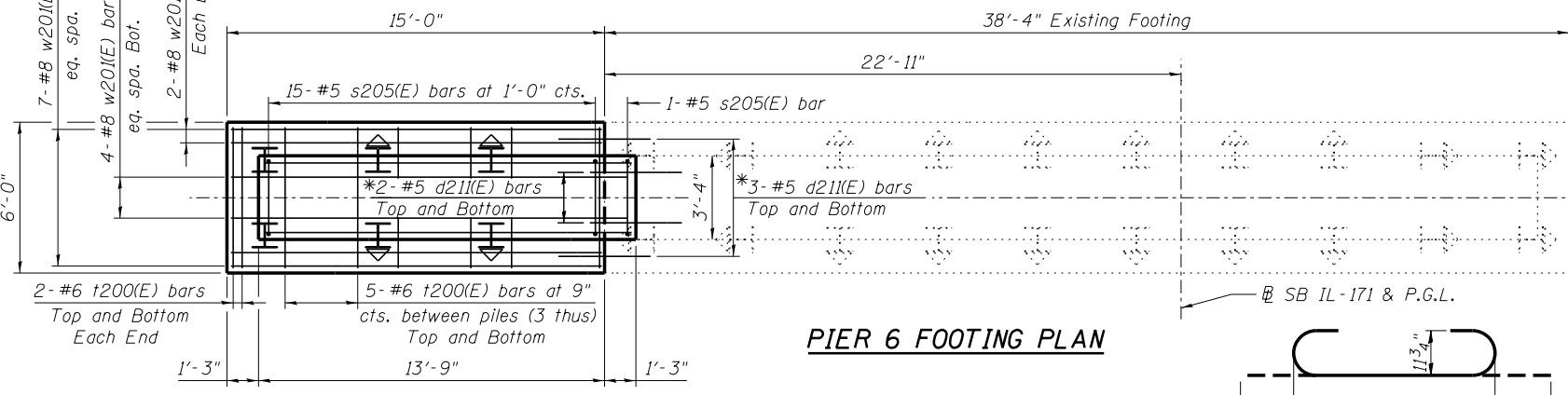


ANCHOR BOLT DETAIL

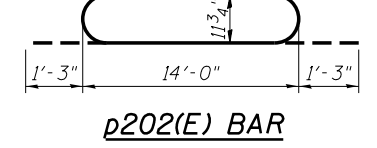
PILE DATA
 Type: HP12x53 with Pile Shoes
 Nominal Required Bearing: 418 kips
 Allowable Resistance Available: 139 kips
 Est. Length: 16 ft.
 No. Production Piles: 5
 No. Test Piles: 1

NOTES:

1. Space reinforcement to miss anchor bolts.
2. Pour steps monolithically with cap.
3. For pile spacing and footing layout, see Foundation Layout on Sheet SD5.



PIER 6 FOOTING PLAN



p202(E) BAR

BILL OF MATERIAL

Bar	No.	Size	Length	Shape
d210(E)	6	#8	7'-0"	—
d211(E)	10	#5	4'-0"	—
h203(E)	6	#5	14'-2"	—
h204(E)	4	#8	14'-8"	—
h205(E)	4	#5	14'-8"	—
n200(E)	15	#6	12'-0"	U
n202(E)	20	#9	15'-6"	U
p202(E)	6	#9	16'-6"	U
p203(E)	4	#5	14'-4"	U
s200(E)	18	#4	11'-0"	O
s205(E)	16	#5	8'-8"	U
s206(E)	20	#5	13'-5"	□
s207(E)	4	#5	12'-9"	□
s208(E)	4	#5	12'-1"	□
s209(E)	4	#5	11'-5"	□
t200(E)	34	#6	5'-8"	—
u200(E)	14	#5	10'-3"	U
w201(E)	15	#8	14'-8"	—
Structure Excavation	Cu. Yd.		31	
Concrete Structures	Cu. Yd.		26.2	
Reinforcement Bars, Epoxy Coated	Pound		3,920	
Furnishing Steel Piles HP12x53	Foot		80	
Driving Piles	Foot		80	
Test Pile Steel HP12x53	Each		1	
Pile Shoes	Each		6	

Bar	C
s206(E)	3'-8"
s207(E)	3'-4"
s208(E)	3'-0"
s209(E)	2'-8"

Bar	A	B
n200(E)	3'-0"	4'-6"
s205(E)	3'-0"	2'-10"
u200(E)	2'-11"	3'-8"

benesch
 engineers · scientists · planners
 Alfred Benesch & Company
 205 North Michigan Avenue, Suite 2400
 Chicago, Illinois 60601
 312-565-0450 Job No. 10093

FILE NAME =	USER NAME =	DESIGNED -	REVISIONS -
0162457.60J16.079.Pier.6.Widening.Details	ksnyder	JLS	
		AJK	
		KMS	
		AJK	

STATE OF ILLINOIS
DEPARTMENT OF TRANSPORTATION

PIER 6 WIDENING DETAILS
STRUCTURE NO. 016-2457

F.A.P. RTE.	SECTION	COUNTY	TOTAL SHEETS	SHEET NO.
372	2013-038B-R	COOK	821	454
CONTRACT NO. 60J16			ILLINOIS FED. AID PROJECT	

Y:\chicago\100005\100093\Eng_Docs\Phase_1\15N_016_2456_2457_1st_Ave_over_Plaines_River_Valley\Final\0162457_60J16_079_Pier_6_Widening_Details.dwg
 3/5/2016 PM 8/6/2014