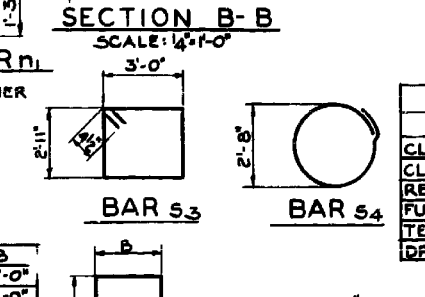
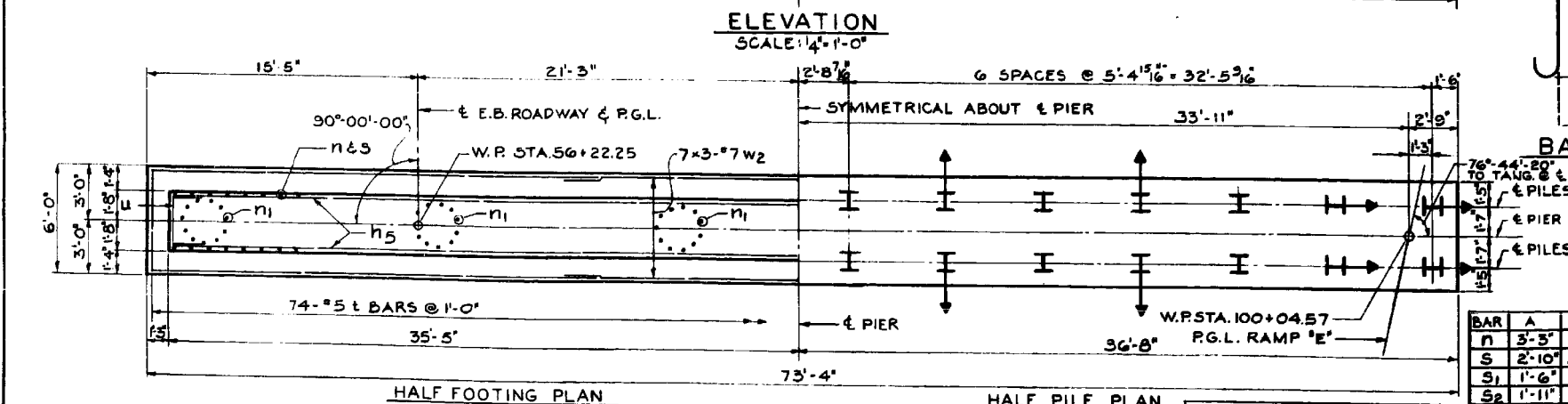
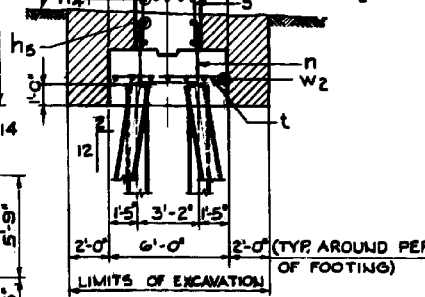
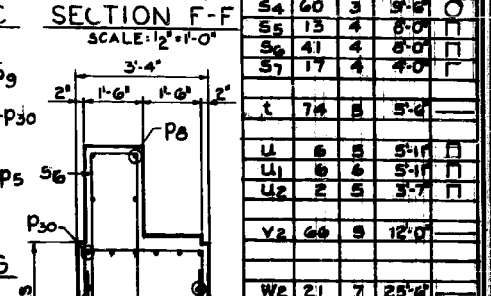
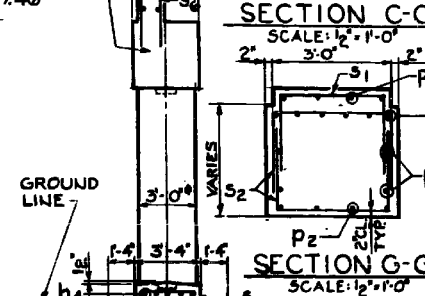
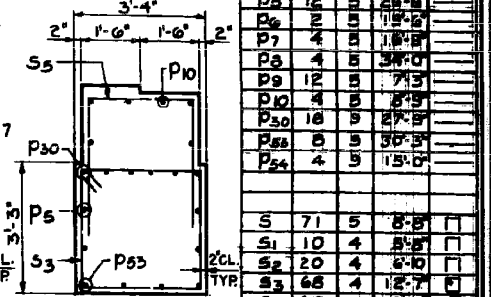
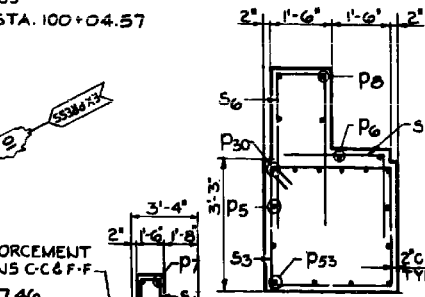
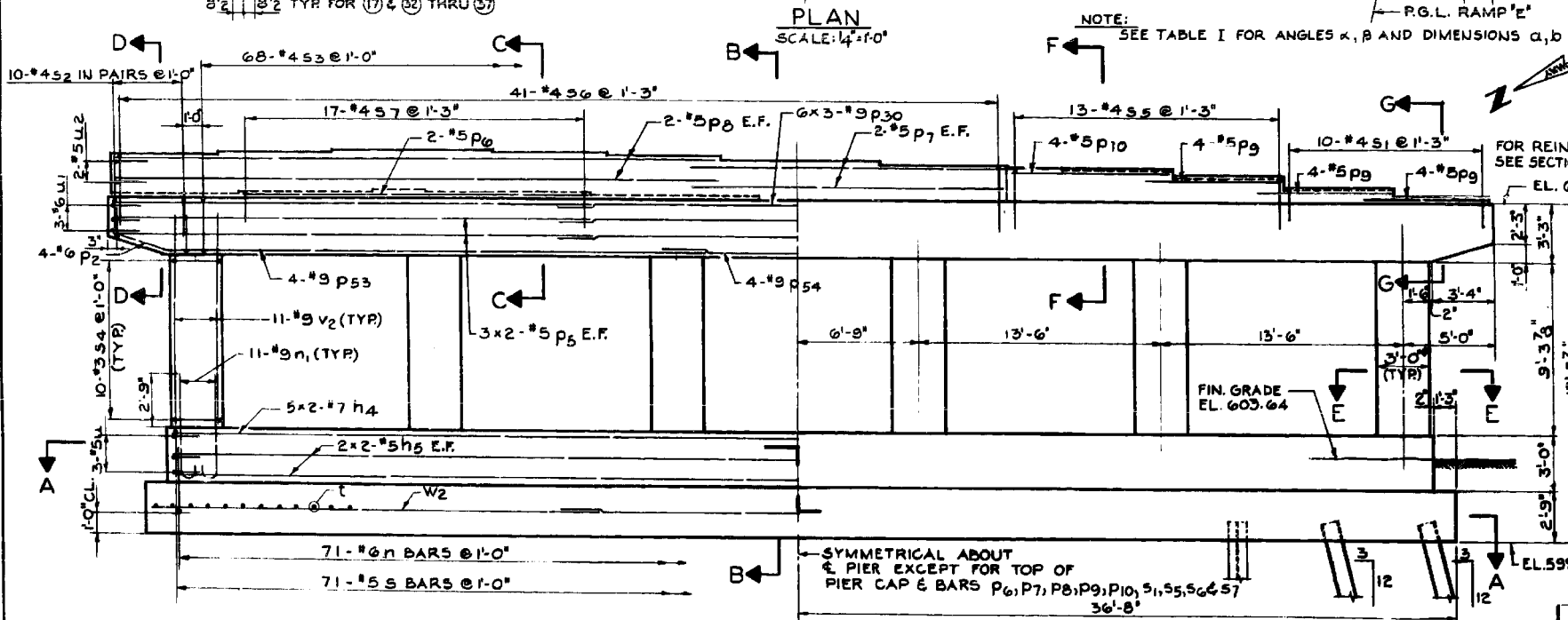


STRINGER LINE	α	β	a	b
1	80°-00'-00"	73°-56'-21"	23'8"	8'3/4"
2	90°-00'-00"	73°-56'-21"		
3	90°-35'-47"	73°-20'-34"	23'8"	8'3/4"
4	94°-11'-25"	73°-27'-09"	15'6"	8'7/8"
5	92°-06'-56"	81°-31'-38"		
6	90°-01'-05"	83°-37'-28"		
7	87°-54'-05"	85°-44'-23"		
8	85°-46'-30"	87°-32'-04"		
9	83°-38'-34"	90°-00'-00"	15'6"	8'7/8"

PROJECT NO.	0707-8788	COUNTY	COOK	SHEET NO.	23
SHEETS			23		

BAR NO	SIZE	LENGTH	SHAPE
n4	10	7	26'-3"
h5	8	5	36'-0"
n1	71	6	9'-6"
n1	68	9	7'-0"
p2	8	5	3'-6"
p5	12	5	25'-8"
p6	2	4	11'-8"
p7	4	8	34'-0"
p8	4	8	34'-0"
p9	12	5	7'-3"
p10	4	8	8'-5"
p30	18	4	27'-5"
p30	8	9	36'-3"
p34	4	9	13'-0"
s	71	5	8'-5"
s1	10	4	8'-8"
s2	20	4	8'-10"
s3	68	4	12'-7"
s4	60	3	3'-8"
s5	13	4	8'-0"
s6	41	4	8'-0"
s7	17	4	4'-0"
u	6	5	5'-11"
u1	6	6	5'-11"
u2	2	5	3'-7"
v2	66	9	12'-0"
w2	21	7	25'-8"



PILE TYPE	MIN. CAPACITY TONS
12 BP53	31
NO REQUIRED	28*
EST. LENGTH FEET	33'
CUT OFF ELEV.	600.14

ITEM	UNIT	QUANTITY
CLASS A EXCAVATION FOR STRUCTURE	CU YD	129
CLASS X CONCRETE	CU YD	127.0
REINFORCEMENT BARS	POUND	13,304
FURNISHING STEEL PILES 12 BP 53	LIN FT	891
TEST PILE STEEL 12 BP 53	EACH	1
DRIVING STEEL PILES	LIN FT	891

ILLINOIS DIVISION OF HIGHWAYS
SOUTHWEST EXPRESSWAY
LAWDALE AVE. VIADUCT
PIER 7

DE LEW, CATHY & CO. ENGINEERS
DESIGNED BY J.C. BROZ
DRAWN BY O. MARTINSONS
CHECKED [Signature]
IN CHARGE E.S. MARTINS
APPROVED L.N. RIAN

SECTION A-A
SCALE: 1/4"=1'-0"

↑ DENOTES BATTERED PILES
* INCLUDES 1 TEST PILE

benesch
engineers · scientists · planners
Alfred Benesch & Company
205 North Michigan Avenue, Suite 2400
Chicago, Illinois 60601
312-565-0450 Job No. 10093

FILE NAME :	USER NAME :	DESIGNED :	REVISIONS :
0162457.60J16.087.existplan4.dgn	tjenicke	FSM	REVISOR :
		RMM	DATE :
		FSM	
		RMM	

STATE OF ILLINOIS
DEPARTMENT OF TRANSPORTATION

EXISTING PLAN INFORMATION (4 OF 26)
STRUCTURE NO. 016-2457
SHEET NO. SDX4 OF SDX26 SHEETS

F.A.P. RTE.	SECTION	COUNTY	TOTAL SHEETS	SHEET NO.
372	2013-038B-R	COOK	821	462
				CONTRACT NO. 60J16
ILLINOIS FED. AID PROJECT				

X:\100005\10093\Eng_Docs_Phase_1\11\SN_016_2456_2457_1st_Ave.cover_Des.Plaines_River_Volley\Final\0162457_60J16_087.existplan4.dgn 2:41:45 PM 6/23/2014