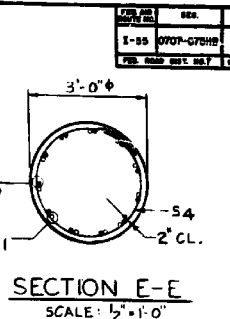
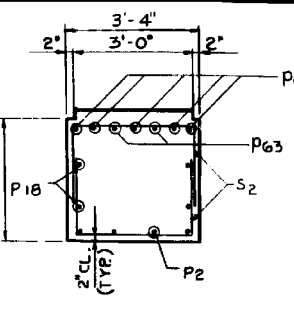
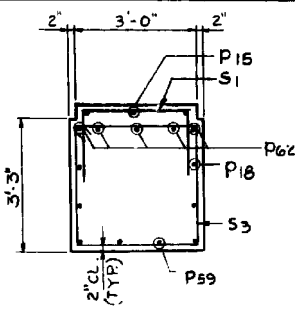
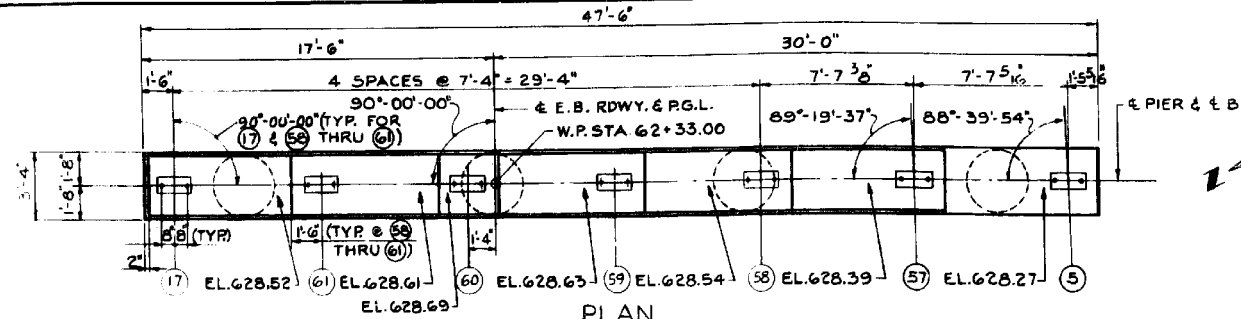
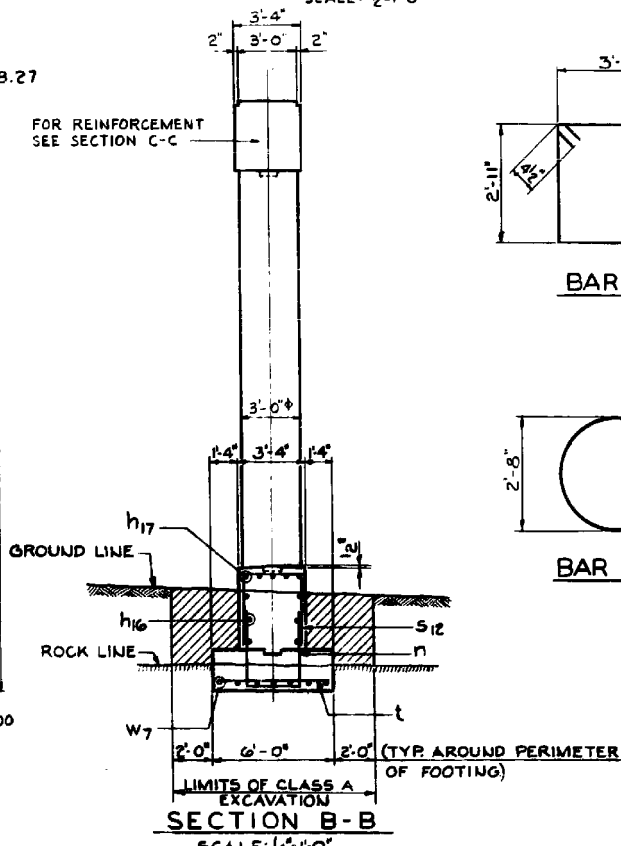
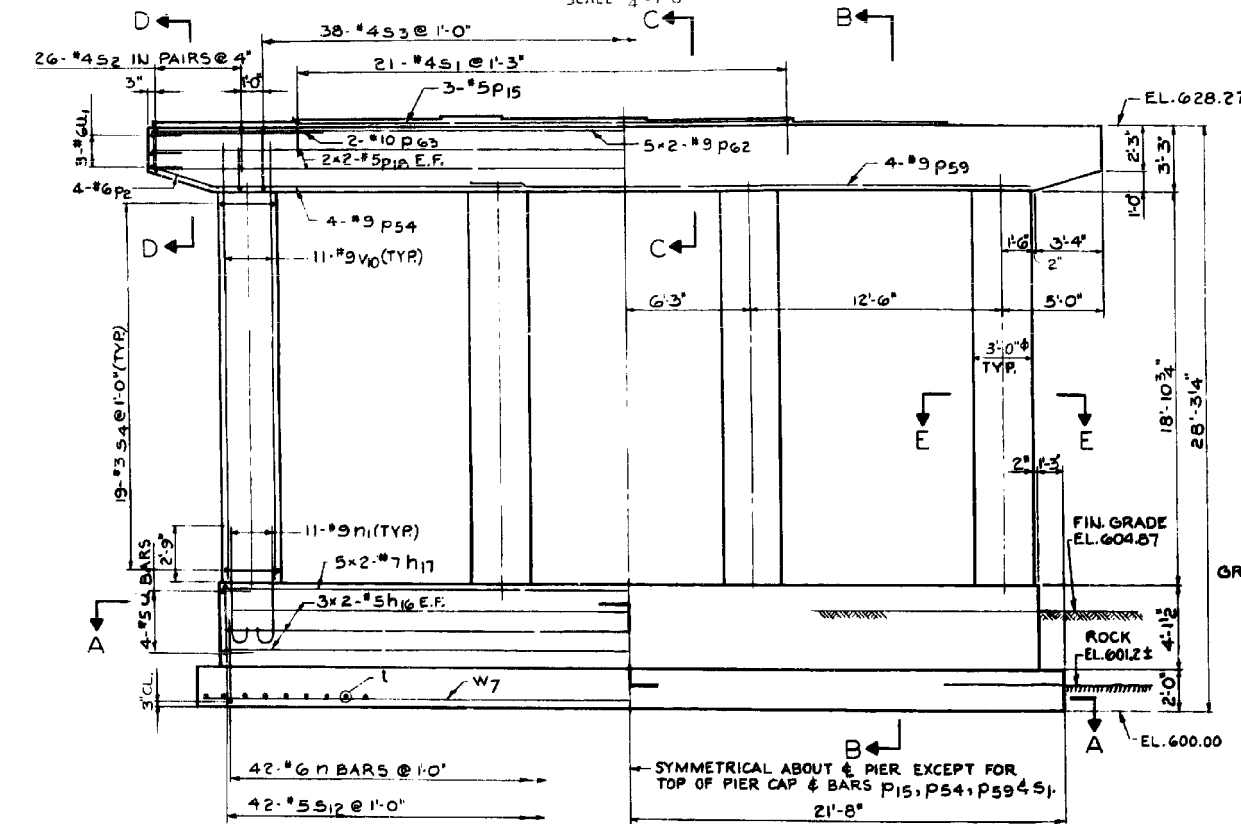


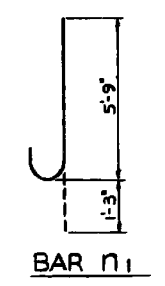
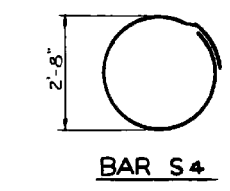
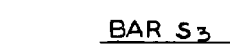
CONTRACT NO.	SECTION	COUNTY	TOTAL SHEETS	SHEET NO.
1-10	0388-R	COOK	95	31
ILLINOIS DIVISION OF HIGHWAYS				SHEETS



BAR LIST				
BAR	NO.	SIZE	LENGTH	SHAPE
h16	12	5	21'-0"	
h17	10	7	21'-3"	
n	42	6	9'-6"	Π
n1	44	9	7'-0"	J
P2	8	6	3'-6"	
P15	3	5	24'-9"	
P18	8	5	24'-3"	
P54	4	9	15'-0"	
P59	4	9	28'-0"	
P62	10	9	24'-9"	
P63	4	10	8'-9"	
S1	21	4	5'-8"	Π
S2	52	4	6'-10"	
S3	38	4	12'-7"	Π
S4	76	3	9'-6"	○
S12	42	5	10'-10"	Π
t	44	5	5'-6"	
u	8	5	5'-11"	Π
u1	6	6	5'-11"	Π
V10	44	9	21'-9"	
W7	14	7	22'-6"	



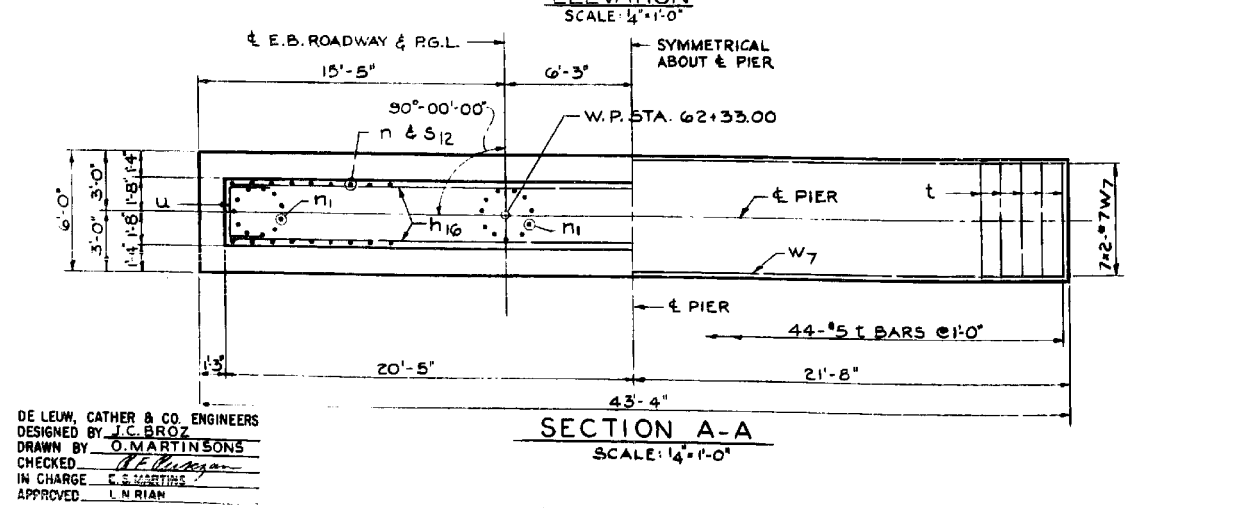
BAR	A	B
n	3'-3"	3'-0"
S1	1'-6"	2'-8"
S2	1'-11"	3'-0"
S3	3'-11"	3'-0"
u	1'-6"	2'-11"
u1	1'-6"	2'-11"



NOTES:
 ALL BAR DIMENSIONS ARE OUT TO OUT. PREFIX ALL BAR MARKS FOR SHIPMENT WITH A NUMBER INDICATING THE PIER WHERE THE BARS WILL BE USED. EXAMPLE: 15h16 MEANS BARS h16 FOR PIER 15. FOR ANCHOR BOLT PROJECTION SEE SH. 77. FOUR STEPS MONOLITHICALLY WITH PIER CAP. SPACE REINFORCEMENT IN CAP TO MISS ANCHOR BOLTS.

BILL OF MATERIAL		
ITEM	UNIT	QUANTITY
CLASS A EXCAVATION FOR STRUCTURE	CU YD	6.4
ROCK EXCAVATION FOR STRUCTURE	CU YD	12
CLASS X CONCRETE	CU YD	79.7
REINFORCEMENT BARS	POUND	9,878

ACTUAL MAXIMUM TOE PRESSURES:	
LOADING GROUP I	5160 P.S.F.
LOADING GROUP II	5990 P.S.F.
LOADING GROUP III	5880 P.S.F.



DE LEUW, CATHY & CO. ENGINEERS
 DESIGNED BY J.C. BROZ
 DRAWN BY O. MARTINSONS
 CHECKED BY P.F. BARTON
 IN CHARGE C.S. MARTINS
 APPROVED L. RIAN

ILLINOIS DIVISION OF HIGHWAYS
 SOUTHWEST EXPRESSWAY
 LAWNDALE AVE. VIADUCT
 PIER 15
 SCALE: AS NOTED DATE 11-25-1965

benesch
 engineers · scientists · planners
 Alfred Benesch & Company
 205 North Michigan Avenue, Suite 2400
 Chicago, Illinois 60601
 312-565-0450 Job No. 10093

FILE NAME =	USER NAME = tjenicke	DESIGNED - FSM	REVISED -
0162457.60J16.095.existplan12.dgn	PLOT SCALE =	CHECKED - RMM	REVISED -
	PLOT DATE = 12/28/2013	DRAWN - FSM	REVISED -
		CHECKED - RMM	REVISED -

STATE OF ILLINOIS
 DEPARTMENT OF TRANSPORTATION

EXISTING PLAN INFORMATION (12 OF 26)
 STRUCTURE NO. 016-2457
 SHEET NO. SDX12 OF SDX26 SHEETS

FOR INFORMATION ONLY				
F.A.P. RTE.	SECTION	COUNTY	TOTAL SHEETS	SHEET NO.
372	2013-0388-R	COOK	821	470
			CONTRACT NO. 60J16	
ILLINOIS FED. AID PROJECT				

X:\1000005\10093\Eng_Docs_Phase_II\SN_016_2456_2457_1st_Ave_cover_Des_Plaines_River_Valley\Final\2457_Final\0162457-60J16-095-existplan12.dgn 2:41:59 PM 6/23/2014