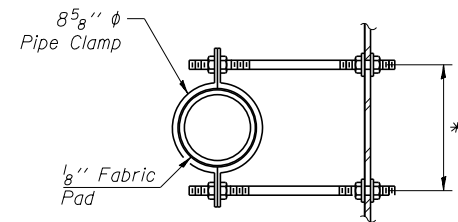


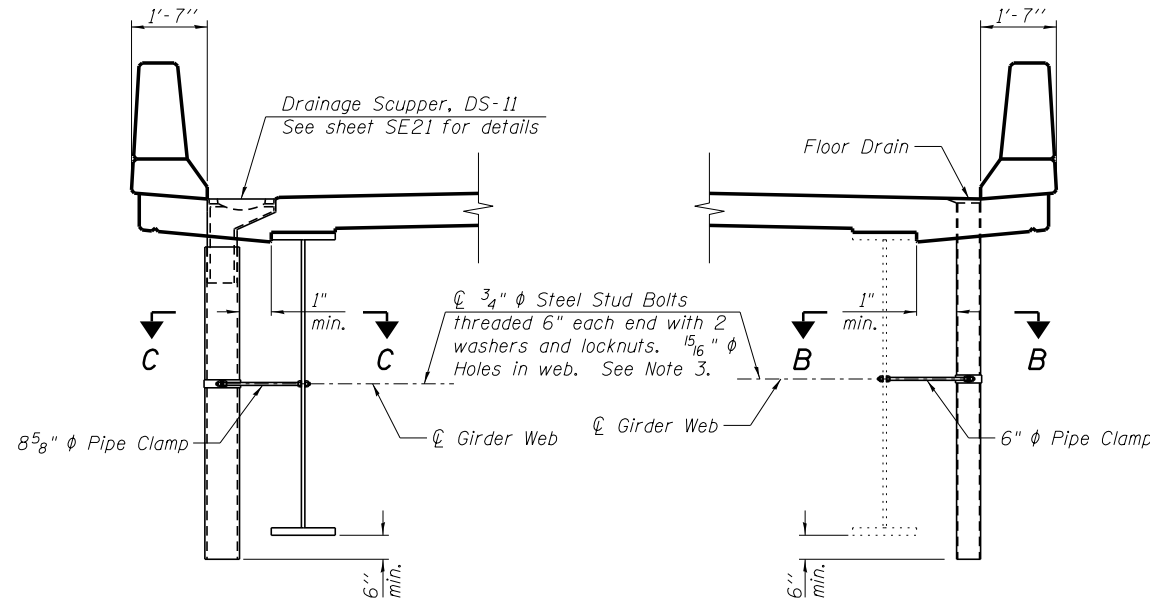
**PLAN**

Note:  
Cut longitudinal reinforcement to clear drainage scuppers.



**SECTION C-C**

\*Dimension as required by Pipe Clamp

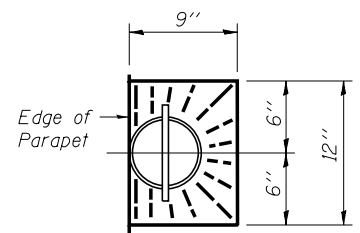


**SECTION A-A**

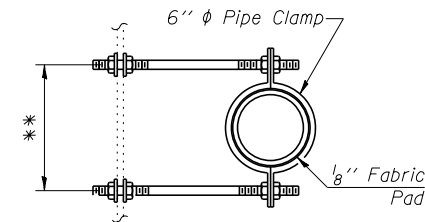
(showing proposed girder)

**SECTION AT PARAPET WITH FLOOR DRAIN**

(showing existing girder)

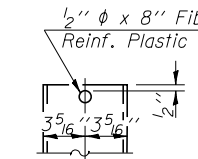


**TOP PLAN**

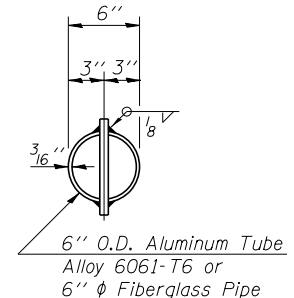


**SECTION B-B**

\*\*Dimension as required by Pipe Clamp

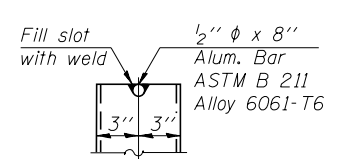


**FIBERGLASS PIPE**



**TOP PLAN**

(Showing Aluminum Tube)



**ALUMINUM TUBE**

**NOTES:**

- Cleaning and painting of the exterior surfaces of the floor drains and drainage scuppers shall be performed under a separate painting contract.
- Fiberglass pipe shall conform to ASTM D 2996, with short-time rupture strength hoop tensile stress of 30,000 p.s.i. minimum. Galvanize clamping device according to AASHTO M232. Cost of clamping device and galvanizing included with Floor Drains.
- Holes shall be drilled in field for existing girder and may be either field drilled or shop drilled for proposed girder.

**benesch**  
engineers · scientists · planners

Alfred Benesch & Company  
205 North Michigan Avenue, Suite 2400  
Chicago, Illinois 60601  
312-565-0450 Job No. 10093

FILE NAME =	USER NAME = jsurber	DESIGNED - JLS	REVISED -
		CHECKED - MFH	REVISED -
0160483.60J16.014_Deck_Drain_Details.dgn	PLOT SCALE =	DRAWN - RMG	REVISED -
	PLOT DATE = 12/20/2013	CHECKED - MFH	REVISED -

**STATE OF ILLINOIS  
DEPARTMENT OF TRANSPORTATION**

**DECK DRAIN DETAILS  
STRUCTURE NO. 016-0483**

SHEET NO. SE14 OF SE46 SHEETS

F.A.P. RTE.	SECTION	COUNTY	TOTAL SHEETS	SHEET NO.
372	2013-038B-R	COOK	821	498
CONTRACT NO. 60J16				

ILLINOIS FED. AID PROJECT