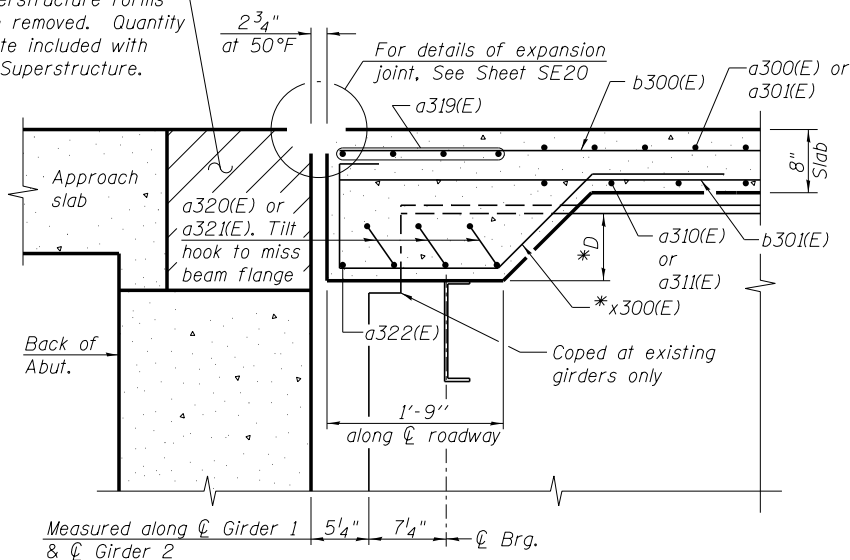
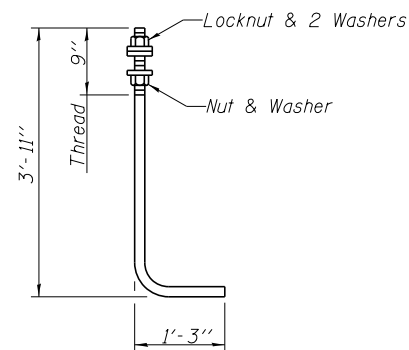


Hatched area to be poured after superstructure forms have been removed. Quantity of concrete included with Concrete Superstructure.



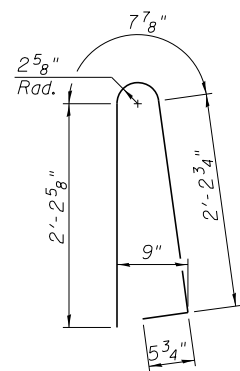
SECTION A-A

Measured along ϕ Girder 1 & ϕ Girder 2
 * (7 thus) x300(E) bars in each 8'-0" wide bay, D Varies 2 1/4" to 4 3/8"
 (4 thus) x300(E) bars in each 4'-3" wide bay, D=5 1/2"

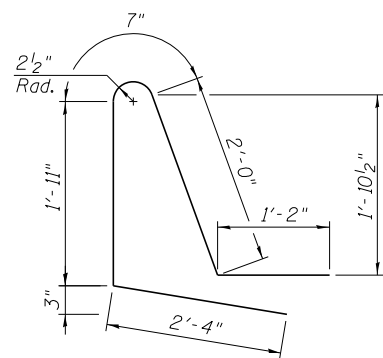


ANCHOR ROD

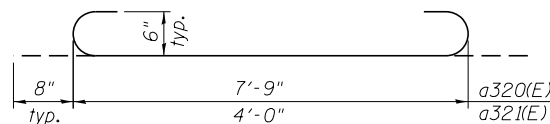
Diameter as specified for light poles. (ASTM F 1554 Grade 105)
 Full length hot dipped galvanized.



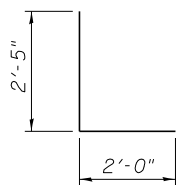
BAR d300(E)



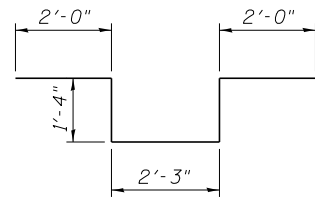
BAR d301(E)



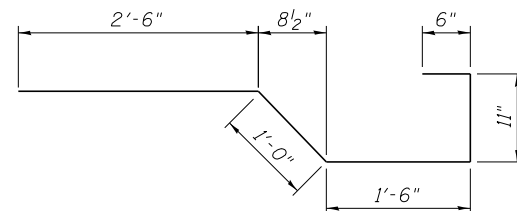
BARS a320(E) AND a321(E)



BAR d302(E)



BAR d303(E)



BAR x300(E)

**SUPERSTRUCTURE
 BILL OF MATERIAL**

Bar	No.	Size	Length	Shape
a300(E)	967	#5	33'-0"	—
a301(E)	92	#5	18'-3"	—
a302(E)	92	#5	19'-3"	—
a303(E)	92	#5	20'-3"	—
a304(E)	92	#5	21'-3"	—
a305(E)	92	#5	22'-3"	—
a306(E)	92	#5	23'-3"	—
a307(E)	92	#5	24'-3"	—
a308(E)	323	#5	25'-3"	—
a309(E)	972	#6	6'-6"	—
a310(E)	699	#5	21'-0"	—
a311(E)	67	#5	30'-3"	—
a312(E)	67	#5	31'-3"	—
a313(E)	67	#5	32'-3"	—
a314(E)	67	#5	33'-3"	—
a315(E)	67	#5	34'-3"	—
a316(E)	67	#5	35'-3"	—
a317(E)	67	#5	36'-3"	—
a318(E)	230	#5	37'-3"	—
a319(E)	4	#6	46'-9"	—
a320(E)	12	#6	9'-1"	—
a321(E)	6	#6	5'-4"	—
a322(E)	1	#6	40'-0"	—
a323(E)	32	#5	1'-6"	—
b300(E)	928	#5	36'-0"	—
b301(E)	720	#5	38'-2"	—
b302(E)	495	#6	28'-8"	—
d300(E)	1150	#5	5'-7"	—
d301(E)	1150	#5	8'-0"	—
d302(E)	9	#6	4'-5"	—
d303(E)	15	#6	8'-11"	—
e300(E)	12	#8	19'-8"	—
e301(E)	12	#8	35'-9"	—
e302(E)	12	#8	38'-9"	—
e303(E)	96	#4	19'-8"	—
e304(E)	140	#4	19'-1"	—
e305(E)	168	#4	17'-4"	—
e306(E)	12	#4	33'-8"	—
e307(E)	12	#4	36'-8"	—
x300(E)	36	#5	6'-5"	—
Concrete Superstructure		Cu. Yd.	861.9	
Bridge Deck Grooving		Sq. Yd.	2,758	
Protective Coat		Sq. Yd.	3,315	
Reinforcement Bars, Epoxy Coated		Pound	216,860	

Bars indicated thus 52x16- #5 etc. indicates 52 lines of bars with 16 lengths per line.

FILE NAME =	USER NAME = jsurber	DESIGNED - JLS	REVISED -
0160483.60J16.016.Deck.Details.BOM.dgn		CHECKED - MFH	REVISED -
	PLOT SCALE =	DRAWN - RMG	REVISED -
	PLOT DATE = 12/20/2013	CHECKED - MFH	REVISED -

F.A.P. RTE.	SECTION	COUNTY	TOTAL SHEETS	SHEET NO.
372	2013-038B-R	COOK	821	500
CONTRACT NO.			60J16	
ILLINOIS FED. AID PROJECT				