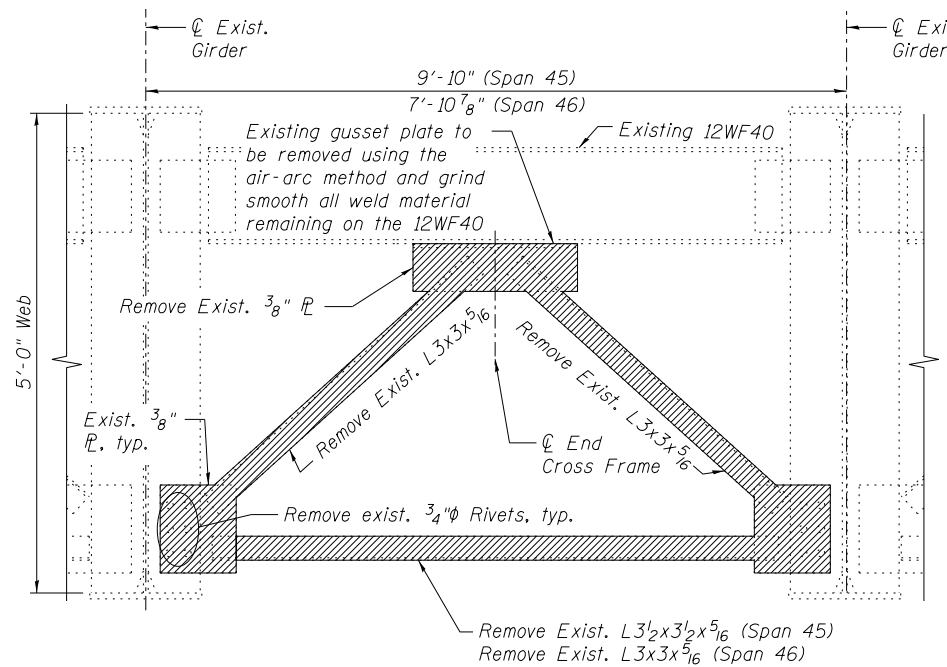
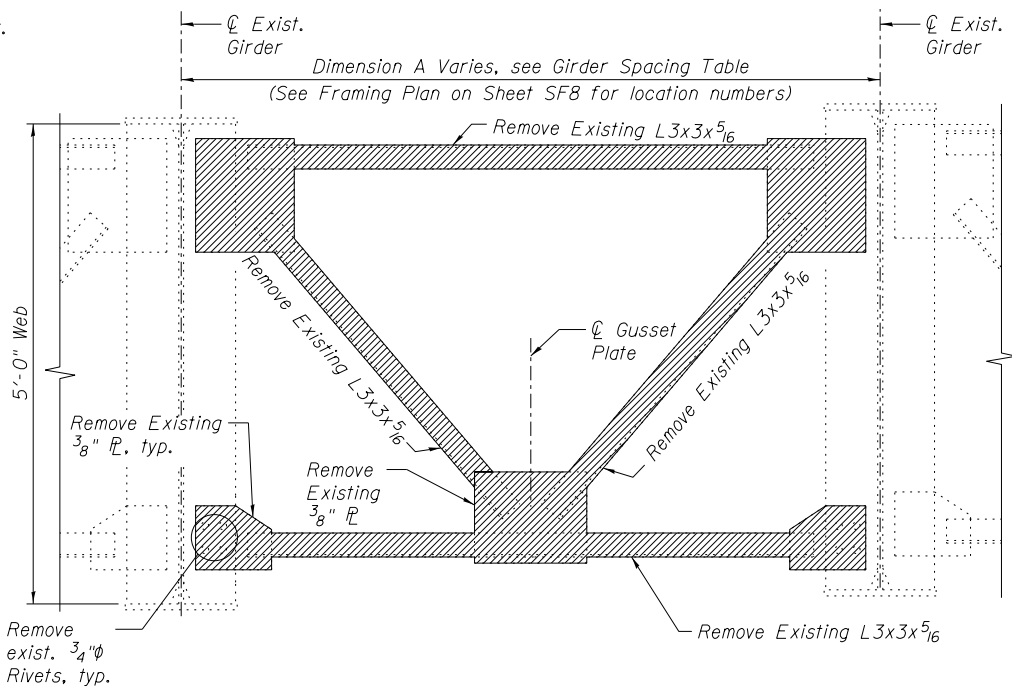


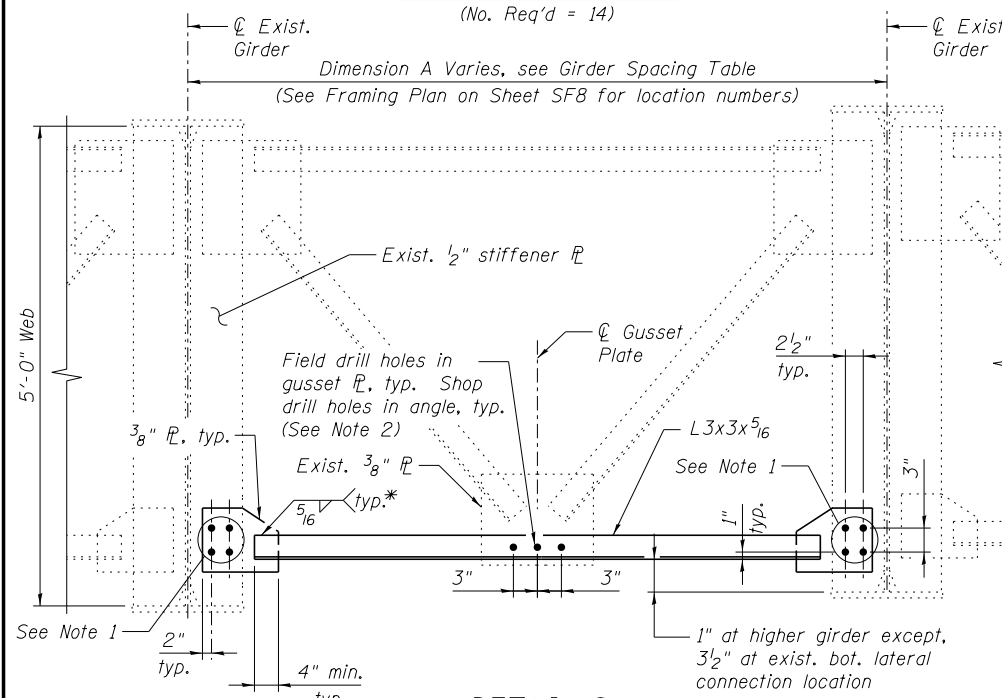
**EXISTING DETAIL 2**  
(No. Req'd = 14)



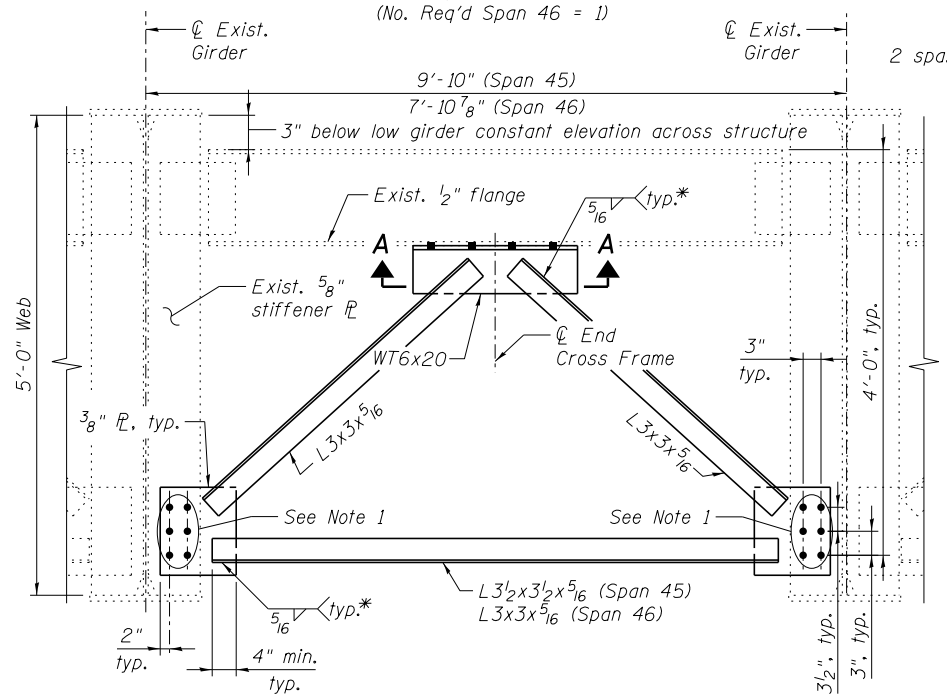
**EXISTING DETAIL 3**  
(No. Req'd Span 45 = 2)  
(No. Req'd Span 46 = 1)



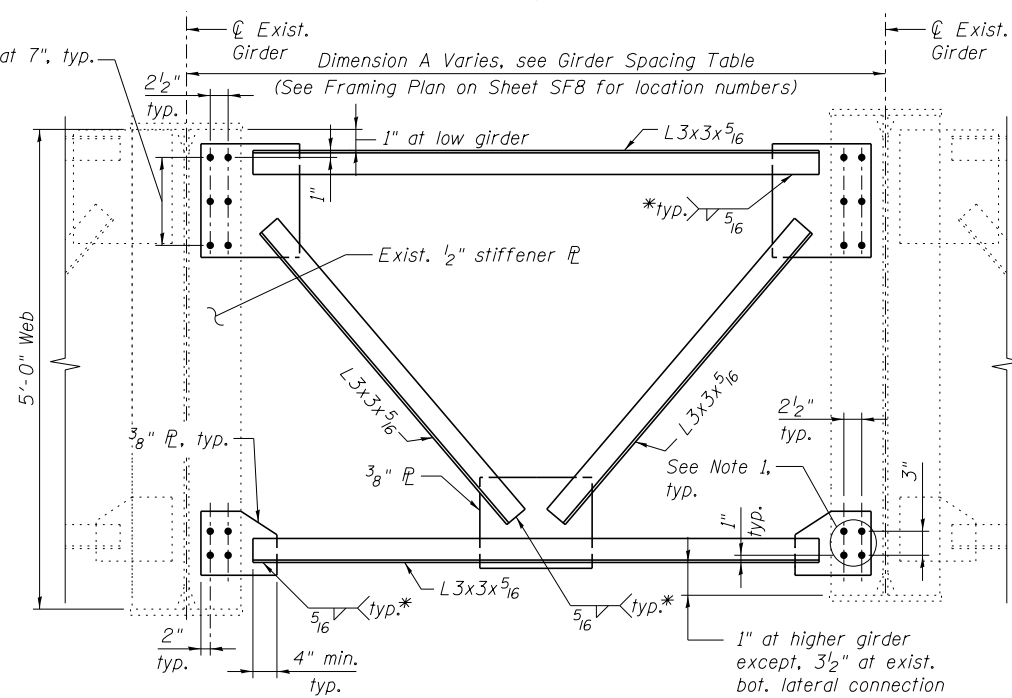
**EXISTING DETAIL 4**  
(No. Req'd = 3)



**DETAIL 2**  
(No. Req'd = 14)



**DETAIL 3**  
(No. Req'd Span 45 = 2)  
(No. Req'd Span 46 = 1)



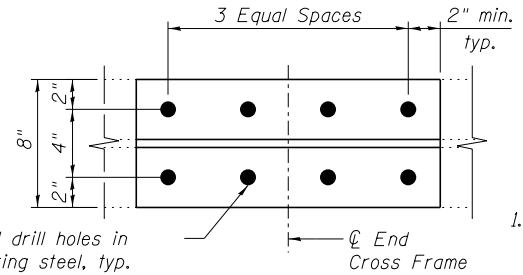
**DETAIL 4**  
(No. Req'd = 3)

\* Fillet weld angles along 3 sides on one face of gusset plate or WT section.

**GIRDER SPACING TABLE**

Location	A	Location	A
1	8'-0"±	9	6'-6 5/8"±
2	8'-0"±	10	6'-11 1/4"±
3	8'-0"±	11	7'-8 1/2"±
4	8'-0"±	12	7'-2 3/4"±
5	8'-0"±	13	7'-6 7/8"±
6	8'-0"±	14	7'-10 5/8"±
7	6'-1 1/4"±	15	8'-1 3/4"±
8	6'-7"±	16	7'-5 1/4"±
		17	6'-10 3/4"±

(For information only. The Contractor shall field verify existing dimensions and details prior to ordering of materials.)



**SECTION A-A**

**NOTES:**

- For new structural steel elements connected to existing structural steel elements, fasteners shall be ASTM A325 Type 1, mechanically galvanized bolts. Holes shall be subpunched or subdrilled 1/16" dia. and reamed in the field to 13/16" dia. for 3/4" dia. bolts using existing holes in connection plates as a template, unless otherwise noted.
- Fasteners shall be ASTM A325 Type 1, mechanically galvanized bolts. Bolts 3/4" dia., holes 13/16" dia. in existing and new steel.
- Cost of field drilling included with "Furnishing and Erecting Structural Steel".

**BILL OF MATERIAL**

ITEM	UNIT	TOTAL
Furnishing and Erecting Structural Steel	Pound	2,030
Structural Steel Removal	Pound	1,830

**benesch**  
engineers · scientists · planners

Alfred Benesch & Company  
205 North Michigan Avenue, Suite 2400  
Chicago, Illinois 60601  
312-565-0450 Job No. 10093

FILE NAME =	USER NAME = tjenicke	DESIGNED - JLS/DTS	REVISED -
		CHECKED - TPS	REVISED -
		DRAWN - RMG	REVISED -
		CHECKED - TPS	REVISED -
0161026.60J16.009.Struct.Steel.Repairs.dwg	PLOT SCALE =		
	PLOT DATE = 12/20/2013		

**STATE OF ILLINOIS**  
**DEPARTMENT OF TRANSPORTATION**

**STRUCTURAL STEEL REPAIR DETAILS**  
**STRUCTURE NO. 016-1026**

F.A.P. RTE.	SECTION	COUNTY	TOTAL SHEETS	SHEET NO.
372	2013-038B-R	COOK	821	552
CONTRACT NO. 60J16				
ILLINOIS FED. AID PROJECT				

SHEET NO. SF9 OF SF17 SHEETS