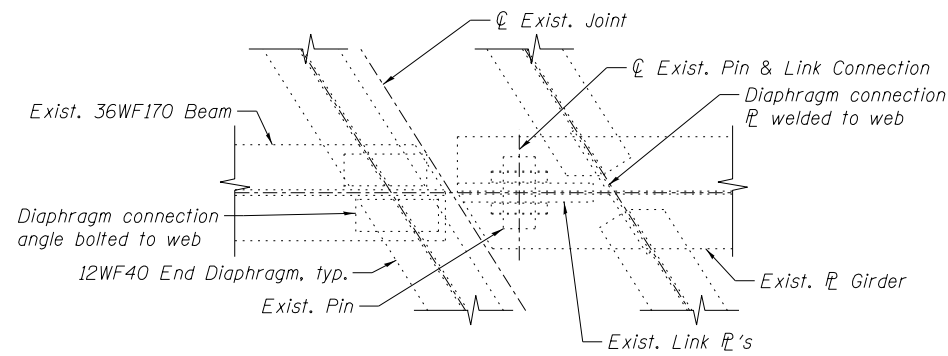


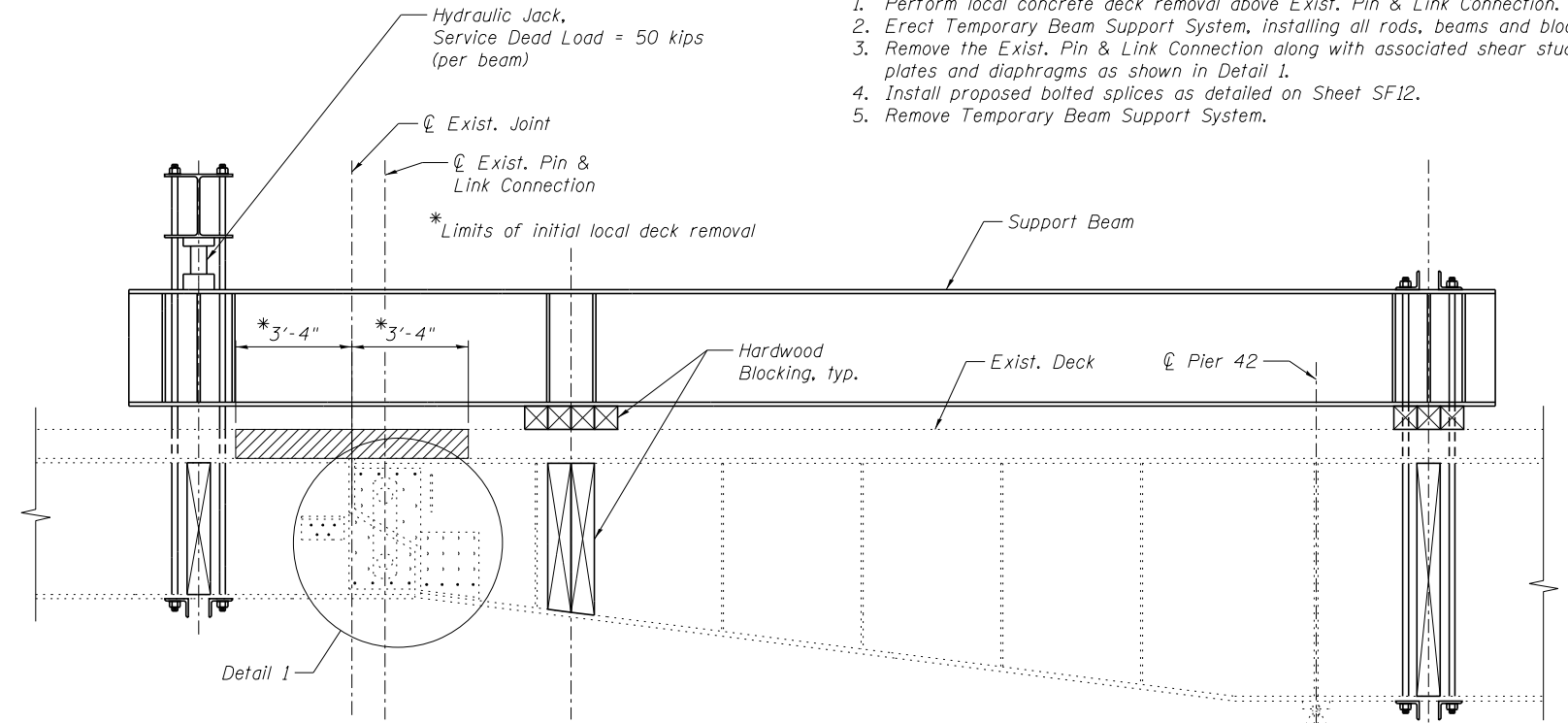
Y:\chicago\100005\100093\Eng_Docs_Phase_1\1016_016_1026_SB_1st_Ave_Ramp_cover_Des_Planes_River_Final\1026_0161026_60J16_011_Pin_Link_Retrofit.dgn 5:12:32 PM 7/15/2014

**SUGGESTED PROCEDURE FOR
PIN AND LINK RETROFIT**

1. Perform local concrete deck removal above Exist. Pin & Link Connection.
2. Erect Temporary Beam Support System, installing all rods, beams and blocking.
3. Remove the Exist. Pin & Link Connection along with associated shear studs, plates and diaphragms as shown in Detail 1.
4. Install proposed bolted splices as detailed on Sheet SF12.
5. Remove Temporary Beam Support System.

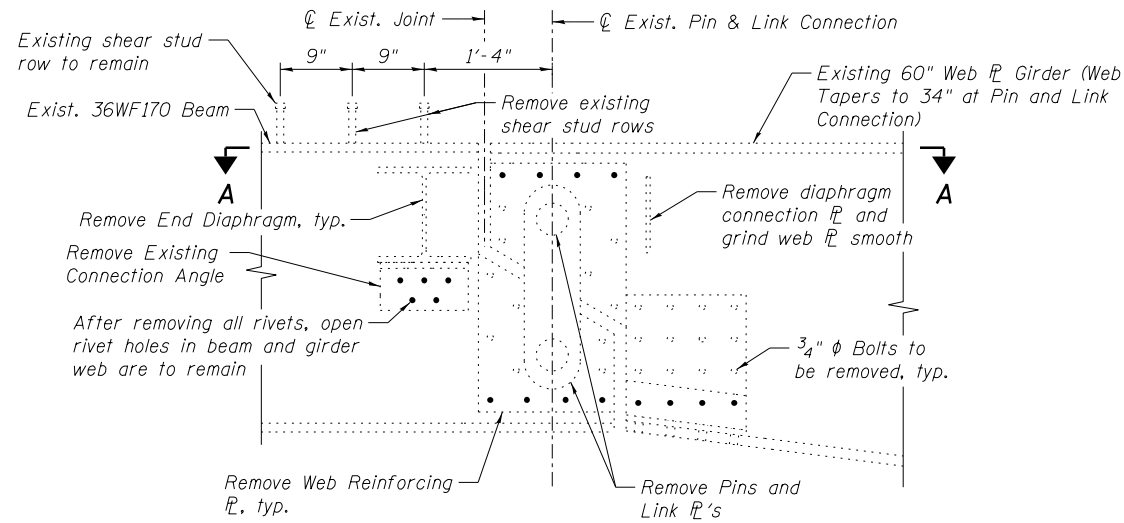


SECTION A-A

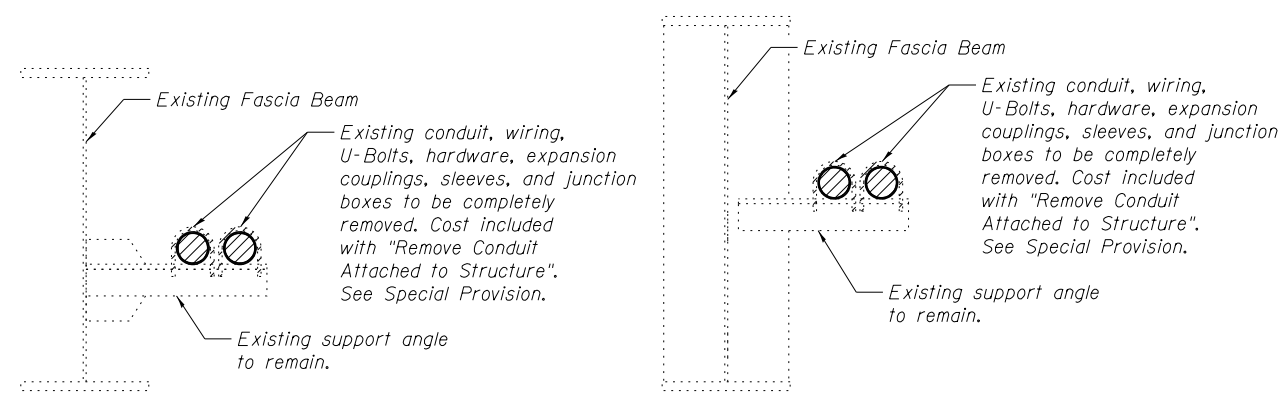


SUGGESTED TEMPORARY BEAM SUPPORT SYSTEM

Note: Specific details of the Temporary Support System shall be submitted by the Contractor for review and approval by the Engineer.



DETAIL 1

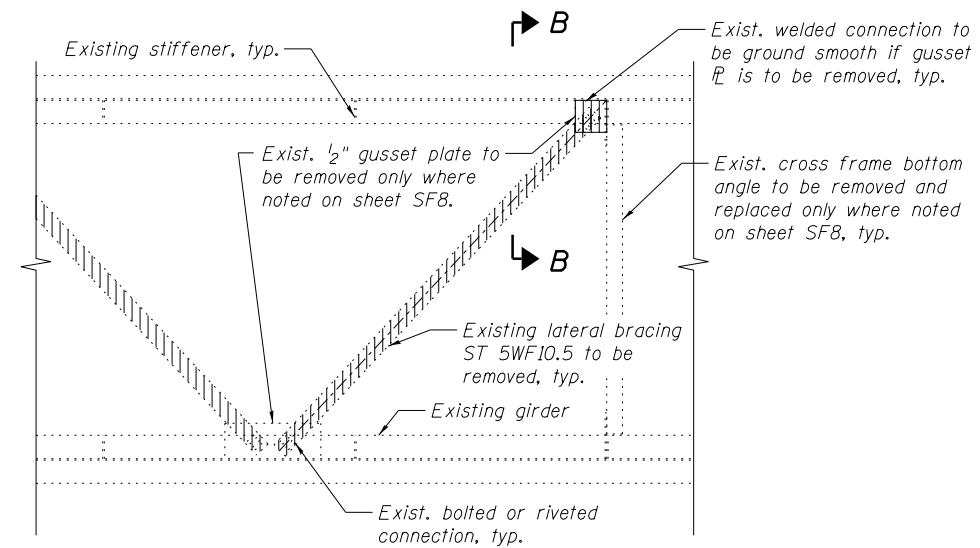


CONDUIT REMOVAL DETAIL

(36 WF 170 Detail)

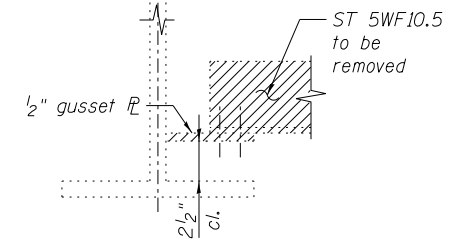
CONDUIT REMOVAL DETAIL

(Plate Girder Detail)



WIND BRACING REMOVAL

(Removal of lateral bracing and gusset plates paid for as "Structural Steel Removal")
(34 ST 5WF10.5 diagonals to be removed)
(6 gusset plates to be removed)



SECTION B-B

NOTES:

1. The work required to remove all existing components of the pin & link connection and diaphragms at the existing joint shall be paid for as Structural Steel Removal.

BILL OF MATERIAL

ITEM	UNIT	TOTAL
Structural Steel Removal	Pound	8,320
Temporary Support System	Each	4
Remove Conduit Attached to Structure	Foot	1,410

benesch
engineers · scientists · planners

Alfred Benesch & Company
205 North Michigan Avenue, Suite 2400
Chicago, Illinois 60601
312-565-0450 Job No. 10093

FILE NAME =	USER NAME = tjenicke	DESIGNED - TJJ/DTS	REVISIONS -
0161026_60J16_011_Pin_Link_Retrofit.dgn		CHECKED - AJK/TPS	REVISIONS -
	PLOT SCALE =	DRAWN - RMG	REVISIONS -
	PLOT DATE = 12/28/2013	CHECKED - AJK/TPS	REVISIONS -

**STATE OF ILLINOIS
DEPARTMENT OF TRANSPORTATION**

**PIN & LINK AND MISCELLANEOUS REMOVAL DETAILS
STRUCTURE NO. 016-1026**

F.A.P. RTE.	SECTION	COUNTY	TOTAL SHEETS	SHEET NO.
372	2013-038B-R	COOK	821	554
CONTRACT NO. 60J16				
ILLINOIS FED. AID PROJECT				

SHEET NO. SF11 OF SF17 SHEETS