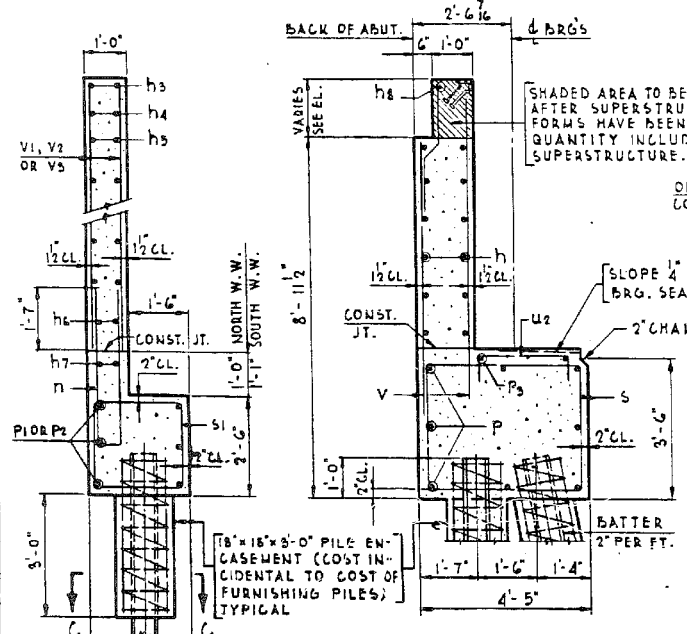


WING WALL ELEVATION DIMENSIONS

GIRDER	ANGLE α°	GIRDER	ANGLE α°
G16	92° - 52' - 30"	G20	89° - 08' - 28"
G17	91° - 55' - 57"	G21	88° - 19' - 59"
G18	90° - 48' - 27"	G22	87° - 32' - 30"
G19	89° - 57' - 57"		

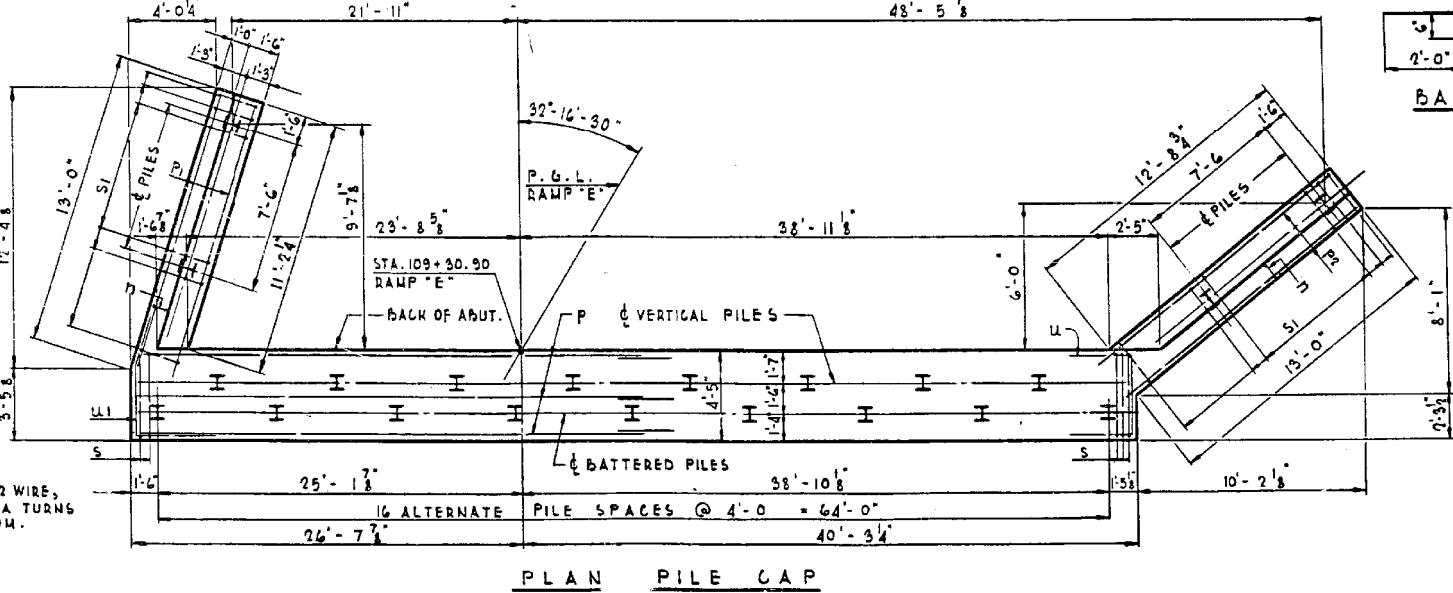
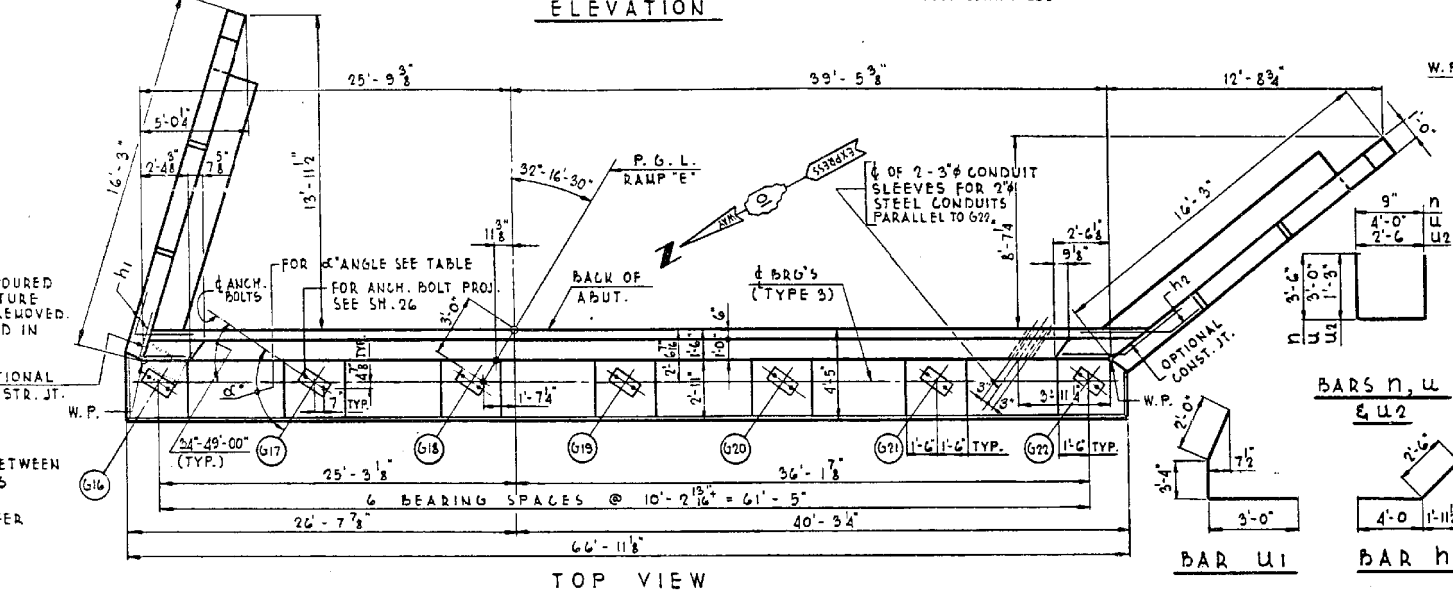


PILE DATA

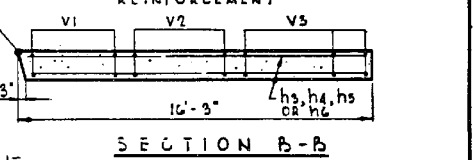
PILE TYPE	8 BP 36
MIN. CAPACITY TONS	28
NO. REQUIRED	21*
EST. LENGTH FEET	31

*INCLUDING TEST PILE.

DE LEEM, CATHY & CO. ENGINEERS
 DESIGNED BY A MILUNAS
 DRAWN BY F BOBINAS
 CHECKED IN CHARGE E S MARTINS
 APPROVED L N RIAN



WING WALL ELEVATION REINFORCEMENT



BAR LIST

BAR NO.	SIZE	LENGTH	SHAPE
n	24	5	35'-6"
h1	16	5	5'-0"
h2	16	5	6'-6"
h3	4	4	4'-6"
h4	4	4	9'-6"
h5	12	4	14'-6"
h6	28	4	15'-9"
h7	4	4	12'-9"
h8	2	6	30'-9"
n	28	5	7'-5"
p	16	8	34'-5"
p1	6	7	12'-9"
p2	6	7	14'-5"
p3	2	7	25'-5"
s	6	4	15'-5"
s1	26	4	9'-5"
u	4	6	10'-0"
u1	4	6	8'-4"
u2	24	4	5'-0"
v	134	4	7'-6"
v1	24	4	9'-10"
v2	20	4	9'-2"
v3	24	4	8'-6"
v4	68	4	4'-5"

BILL OF MATERIAL

ITEM	UNIT	QUANTITY
CLASS X CONCRETE	CUYD	78.8
REINFORCEMENT BARS	POUND	6,077
FURNISHING STEEL PILES 8BP36	LIN FT	620
TEST PILE STEEL 8BP36	EACH	1
DRIVING STEEL PILES	LIN FT	440
PROTECTIVE COAT	50 YD	12
CLASS A EXCAVATION FOR STRUCTURES	CUYD	116
NAME PLATE	EACH	1

ILLINOIS DIVISION OF HIGHWAYS
 SOUTHWEST EXPRESSWAY
RAMP E OVER DES PLAINES RIVER
 ABUTMENT "E" DETAILS
 SCALE: AS NOTED DATE: 8-22-63

JOB NO. 1179

X:\100005\10093\Eng_Docs_Phase_1\11\SN_016_1026_SB_1st_Ave_Ramp_cover_Des_Plaines_River_VFinal\1026\0161026_60J16_X02.existplan2.dgn 6/23/2014 2:45:40 PM