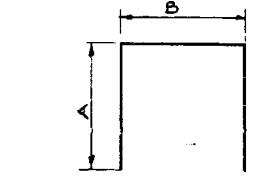


BAR	A	B
n4	3'-3"	3'-0"
s9	2'-10"	3'-0"
s11	2'-3"	3'-0"
s13	1'-6"	2'-8"
u7	1'-6"	2'-11"
u9	1'-6"	2'-11"



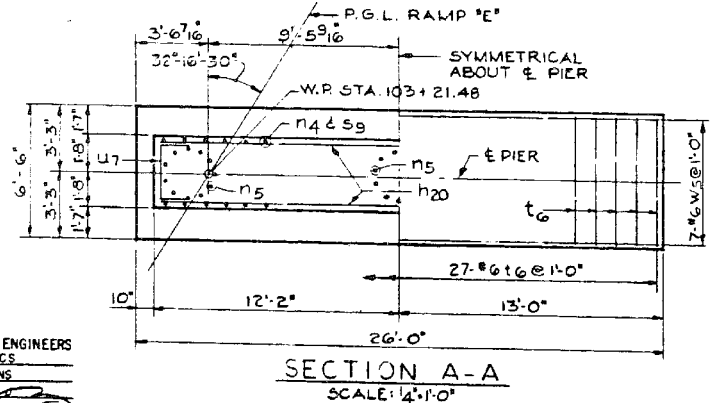
BAR LIST				
BAR	NO	SIZE	LENGTH	SHAPE
h19	4	6	24'-0"	—
h20	4	5	24'-0"	—
n4	25	6	9'-6"	□
n5	33	9	7'-0"	J
p5	10	9	8'-0"	—
p8	8	6	3'-6"	—
p11	4	9	30'-6"	—
p12	4	5	30'-6"	—
p13	3	5	11'-6"	—
p14	4	9	24'-0"	—
s8	57	3	9'-6"	○
s9	25	5	8'-8"	□
s11	40	4	7'-6"	□
s12	17	4	13'-7"	□
s13	10	4	5'-8"	□
t6	27	6	6'-0"	—
u7	6	5	5'-11"	□
u9	6	6	5'-11"	□
v12	33	9	21'-3"	—
w5	7	6	25'-6"	—

NOTES:
 ALL BAR DIMENSIONS ARE OUT TO OUT. PREFIX ALL BAR MARKS FOR SHIPMENT WITH A NUMBER INDICATING THE PIER WHERE THE BARS WILL BE USED. EXAMPLE 42 h19 MEANS BARS h19 FOR PIER 42.
 FOR ANCHOR BOLT PROJECTION SEE SH. 26
 SPACE REINFORCEMENT IN CAP TO MISS ANCHOR BOLTS
 POUR STEPS MONOLITHICALLY WITH PIER CAP.

BILL OF MATERIAL		
ITEM	UNIT	QUANTITY
CLASS A EXCAVATION FOR STRUCTURES	CU YD	142
CLASS X CONCRETE	CU YD	505
REINFORCEMENT BARS	POUND	6413
CLASS B EXCAVATION FOR STRUCTURES	CU YD	132

ILLINOIS DIVISION OF HIGHWAYS
 SOUTHWEST EXPRESSWAY
RAMP E OVER DES PLAINES RIVER
PIER 42
 SCALE: AS NOTED DATE: 8-21-63

DE LEUR, CATHY & CO. ENGINEERS
 DESIGNED BY V.A. BURKEVICS
 DRAWN BY O. MARTINSONS
 CHECKED BY E.S. MARTINS
 IN CHARGE
 APPROVED L.N. RIAM



FILE NAME = 0161026_60J16_X04_exisplan4.dgn	USER NAME = tjenicke	DESIGNED - FSM	REVISD -
PLOT SCALE =	PLOT DATE = 12/20/2013	CHECKED - RMM	REVISD -
		DRAWN - FSM	REVISD -
		CHECKED - RMM	REVISD -

F.A.P. RTE.	SECTION	COUNTY	TOTAL SHEETS	SHEET NO.
372	2013-038B-R	COOK	821	564
CONTRACT NO. 60J16				ILLINOIS FED. AID PROJECT

X:\1000005\10093\Eng_Docs_Phase_II\SN_016_1026_SB_1st_Ave_Ramp_cover_Des_Plaines_River_Final_V1\Final_1026\0161026_60J16_X04_exisplan4.dgn 2:45:44 PM 6/23/2014