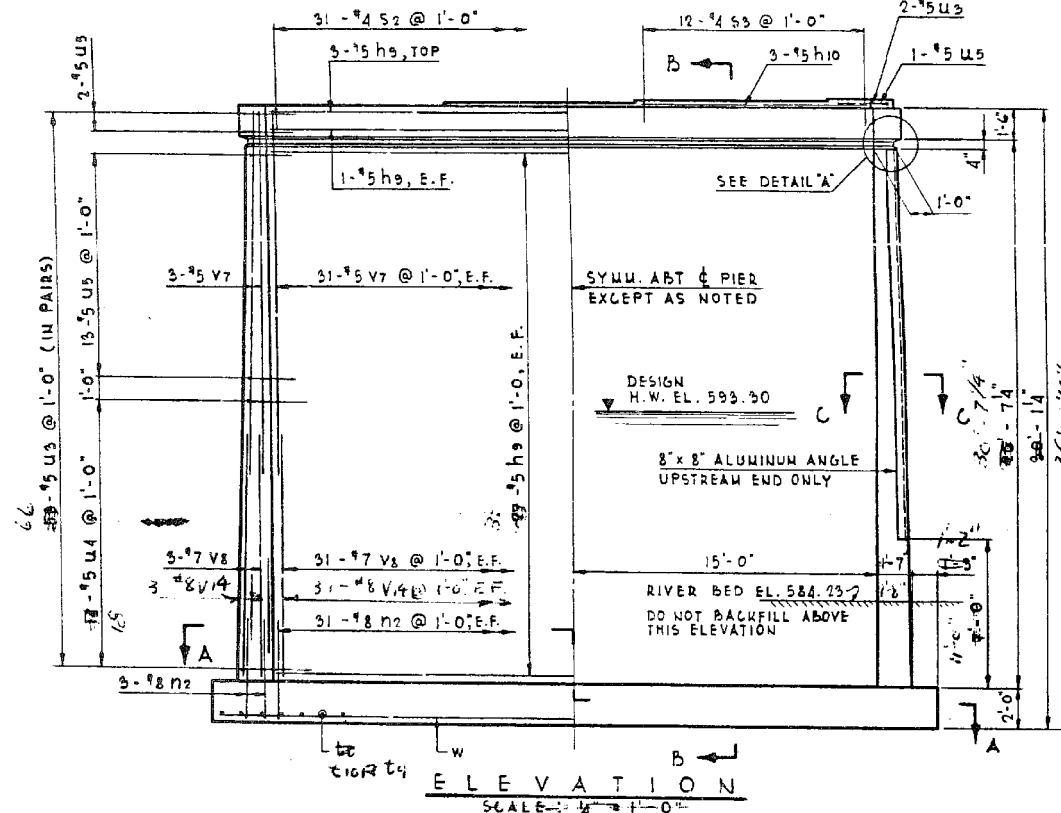


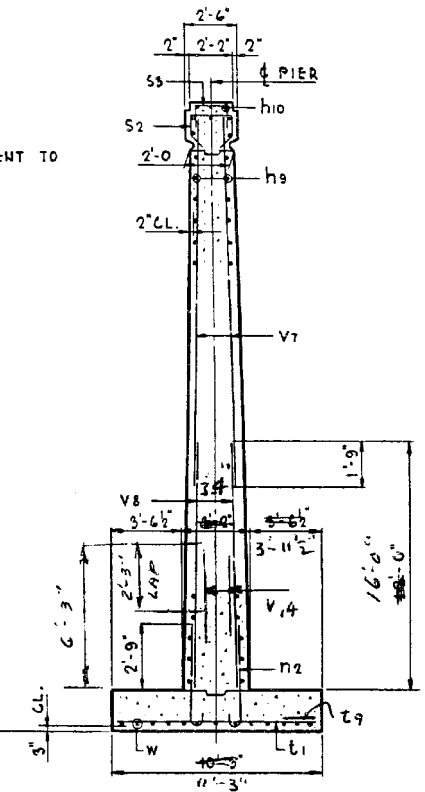
PLAN
SCALE: 1/4" = 1'-0"

DETAIL "A"
SCALE: 1/2" = 1'-0"

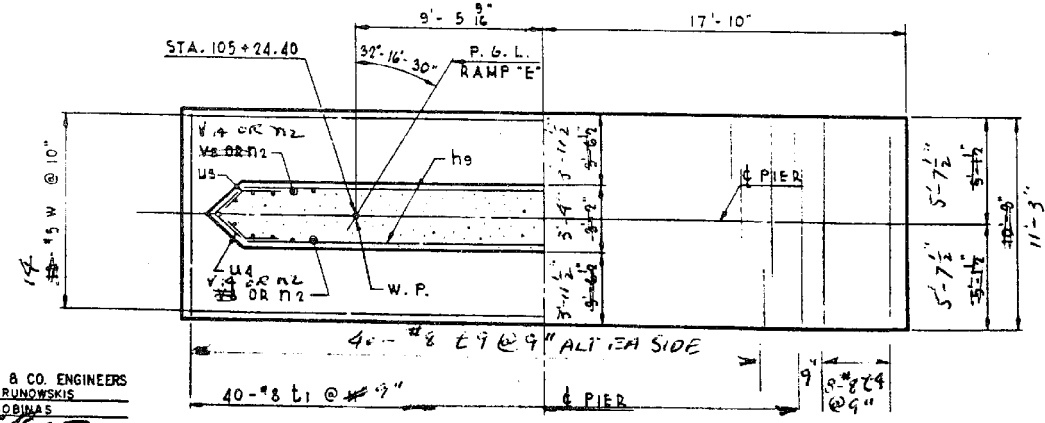


ELEVATION
SCALE: 1/4" = 1'-0"

NOTE: SPACE CAP REINFORCEMENT TO MISS ANCHOR BOLTS.

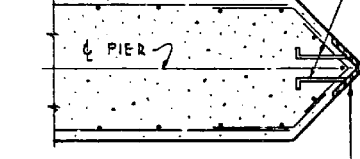


SECTION B-B
SCALE: 1/4" = 1'-0"



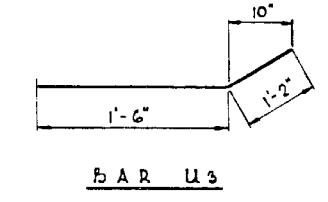
SECTION A-A
SCALE: 1/4" = 1'-0"

2" x 3/8" x 1'-0" ALUMINUM STRAP (ASTM DESIGNATION B209 G5 11A-T6). WELD TO ANGLES USING FILLER WIRE FOR WELDING, ALUMINUM ALLOY ER4043 ASTM B285. SPACE @ 1'-0" ALT. COST INCIDENTAL TO CLASS X CONCRETE

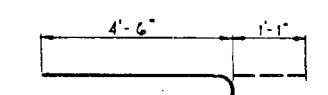


SECTION C-C
SCALE: 1/4" = 1'-0"

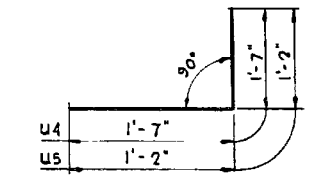
8" x 8" x 1" ALUMINUM L ASTM B508 G5 11A-T6 (UPSTREAM END ONLY) COST INCIDENTAL TO CLASS X CONCRETE



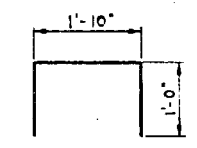
BAR U3



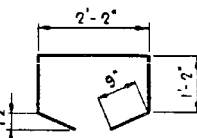
BAR N2



BARS U4 & U5



BAR S3



BAR S2

SUPPLEMENTAL BAR LIST

BAR NO.	SIZE	LENGTH	SHAPE
n2	8	5'-7"	U
u3	118	5	2'-8"
u4	28	5	3'-2"
u5	31	5	2'-4"
v7	68	5	17'-9"
v8	68	7	17'-0"
w	13	5	35'-3"

BAR LIST

BAR NO.	SIZE	LENGTH	SHAPE
h9	59	5	29'-9"
h10	3	5	11'-6"
n2	68	8	5'-7"
s2	31	4	6'-0"
s3	12	4	3'-10"
t1	40	8	9'-9"
u3	118	5	2'-8"
u4	28	5	3'-2"
u5	31	5	2'-4"
v7	68	5	17'-9"
v8	68	7	17'-0"
w	13	5	35'-3"

ALL BAR DIMENSIONS ARE OUT TO OUT. PREFIX ALL BAR MARKS FOR SHIPMENT WITH A NUMBER INDICATING THE PIER WHERE THE BARS WILL BE USED. EXAMPLE: 44 h9 MEANS BARS h9 FOR PIER 44 FOR ANCHOR BOLT PROJECTION SEE SM-26 POUR STEPS MONOLITHICALLY WITH PIER CAP MIN. BAR LAP = 20 DIA.

BILL OF MATERIAL *

ITEM	UNIT	QUANTITY
CLASS B EXCAVATION FOR STRUCTURES	CU. YD	150
CLASS X CONCRETE	CU. YD	111.2
REINFORCEMENT BARS	POUND	7978

* FOR ORIGINAL CONTRACT ONLY

SUPPLEMENTAL BILL OF MATERIAL

ITEM	UNIT	QUANTITY
CLASS B EXCAVATION FOR STRUCTURES	CU. YD	100
CLASS X CONCRETE	CU. YD	17.9
REINFORCEMENT BARS	POUND	2094

ILLINOIS DIVISION OF HIGHWAYS
SOUTHWEST EXPRESSWAY
RAMP E OVER DES PLAINES RIVER
PIER 44
SCALE: AS NOTED DATE: 5-27-63

DE LEHN, CATHER & CO. ENGINEERS
DESIGNED BY T. BRUNOWSKI
DRAWN BY E. BOHNS
CHECKED BY S. MARTINS
IN CHARGE L. MARTINS
APPROVED L. MARTINS

JOB NO. 1179

REVISED 12-9-63 LOWERED PIER FOOTING DELBOW-CATHER & CO.

benesch
engineers - scientists - planners
Alfred Benesch & Company
205 North Michigan Avenue, Suite 2400
Chicago, Illinois 60601
312-565-0450 Job No. 10093

FILE NAME	USER NAME	DESIGNED	CHECKED	PLOT SCALE	PLOT DATE	DESIGNED	CHECKED	REVISIONS
0161026_60J16_X06_existplan6.dgn	tjanicke	FSM	RMM		12/28/2013	FSM	RMM	REVISIONS

STATE OF ILLINOIS
DEPARTMENT OF TRANSPORTATION

EXISTING PLANS - PIER 44
STRUCTURE NO. 016-1026
SHEET NO. SFX6 OF SFX30 SHEETS

FOR INFORMATION ONLY

F.A.P. RTE.	SECTION	COUNTY	TOTAL SHEETS	SHEET NO.
372	2013-038B-R	COOK	821	566

CONTRACT NO. 60J16
ILLINOIS FED. AID PROJECT

X:\100005\10093\Eng_Docs_Phase_1\11\SN_016_1026_SB_1st_Ave_Ramp_cover_Des_Plaines_River_Final\1026\0161026_60J16_X06_existplan6.dgn 2:45:48 PM 6/23/2014