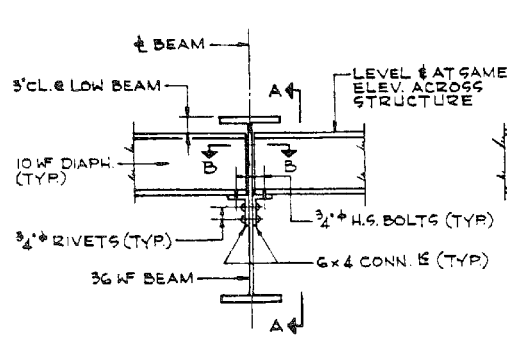
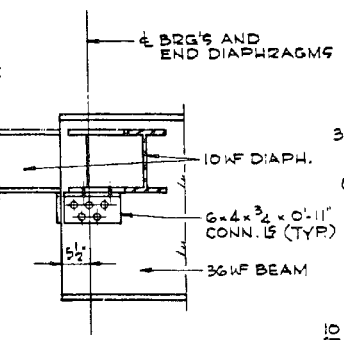


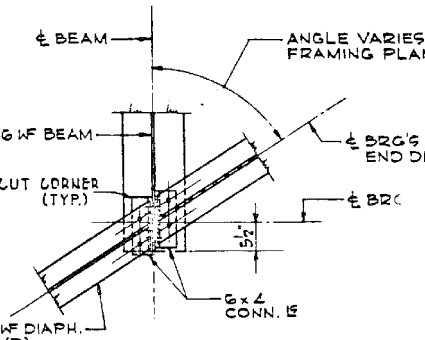
STIFF. R. LOCATION	'A'	'B'	'C'
UNIT 'A'	6 7/8 x 3/4	6 7/8 x 1/2	6 x 3/8
UNIT 'B'	7 1/2 x 3/8	7 1/2 x 1/2	5 1/2 x 3/8



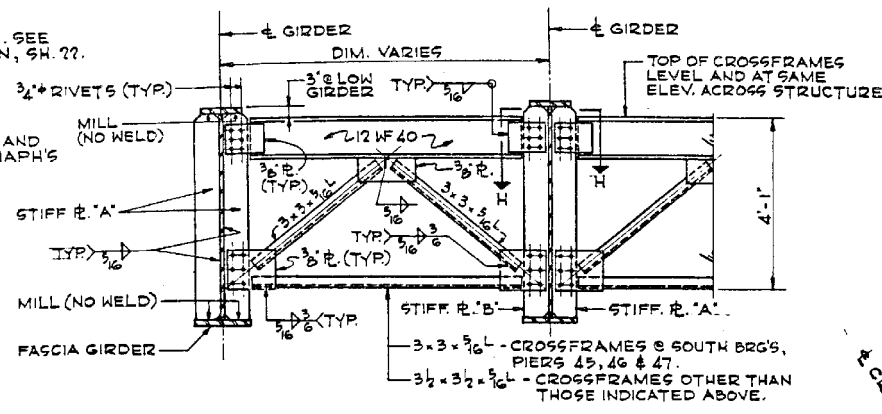
END DIAPHRAGM DETAIL AT PIER 41
DIAPHRAGMS D & D1
FOR NO. REQ'D, SEE 'TABLE II' SH. 22
SCALE: 3/4\"/>



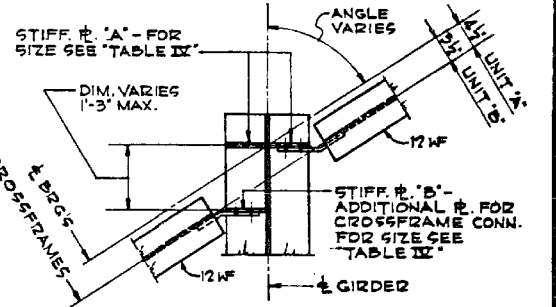
SECTION A-A
SCALE: 3/4\"/>



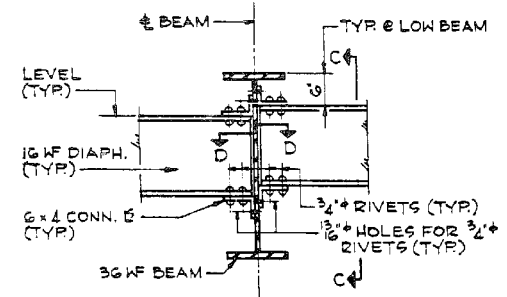
SECTION B-B
SCALE: 3/4\"/>



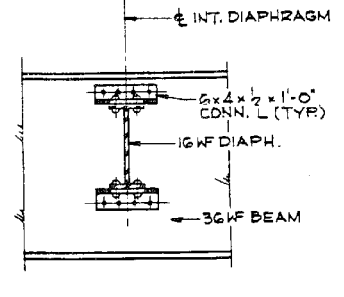
END CROSSFRAME DETAIL
FOR SIZE OF STIFF. R'S 'A' & 'B', SEE 'TABLE IV'.
SCALE: 1/2\"/>



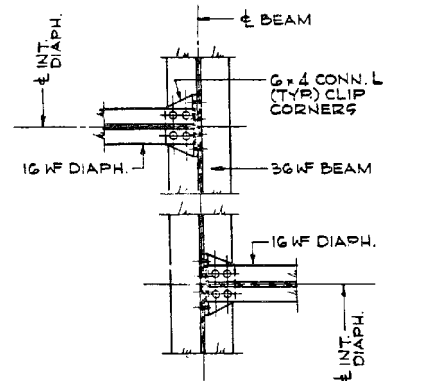
SECTION H-H
SCALE: 3/4\"/>



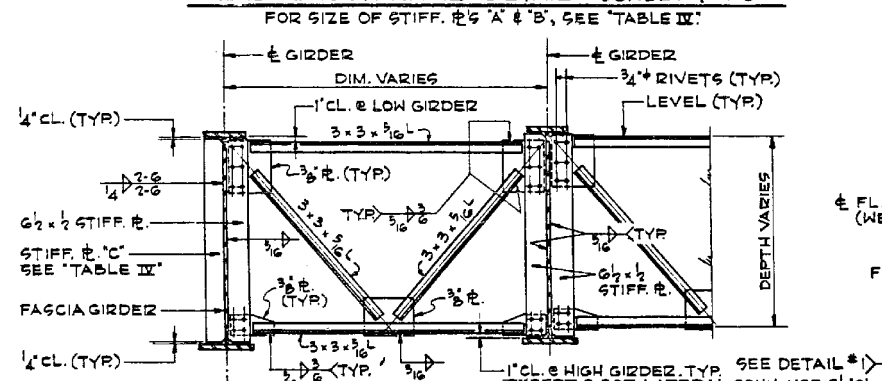
INTERMEDIATE DIAPHRAGM DETAIL
DIAPHRAGMS D3, D4 & D5
FOR NO. REQ'D, SEE 'TABLE II' SH. 22
SCALE: 3/4\"/>



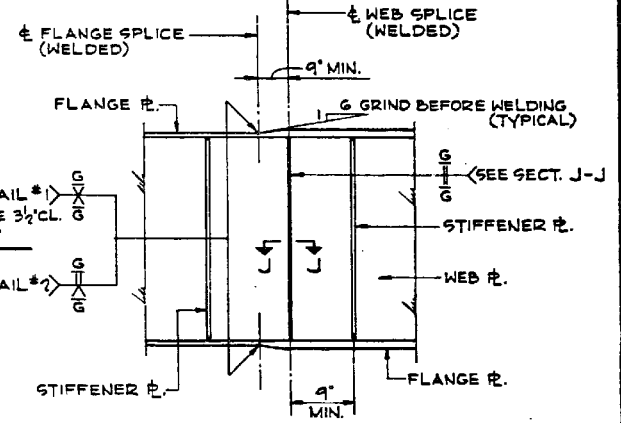
SECTION C-C
SCALE: 3/4\"/>



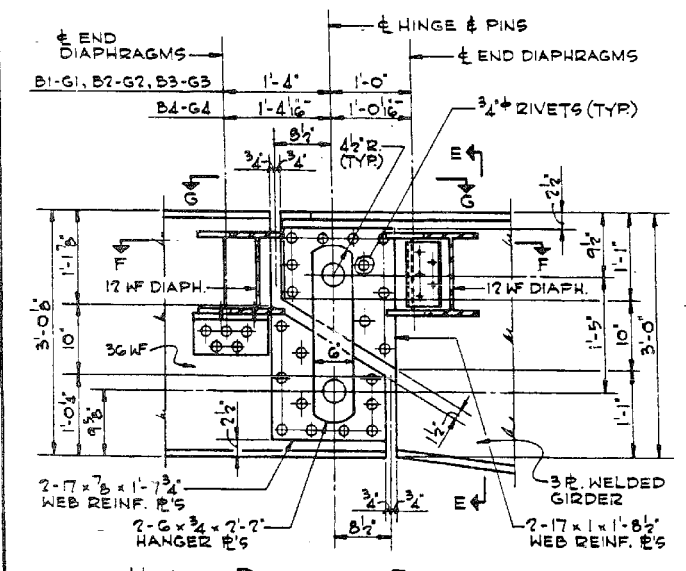
SECTION D-D
SCALE: 3/4\"/>



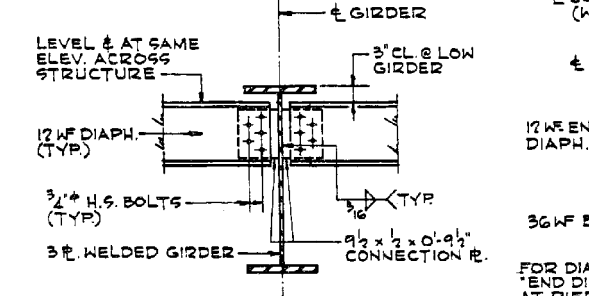
INTERMEDIATE CROSSFRAME DETAIL
SCALE: 1/2\"/>



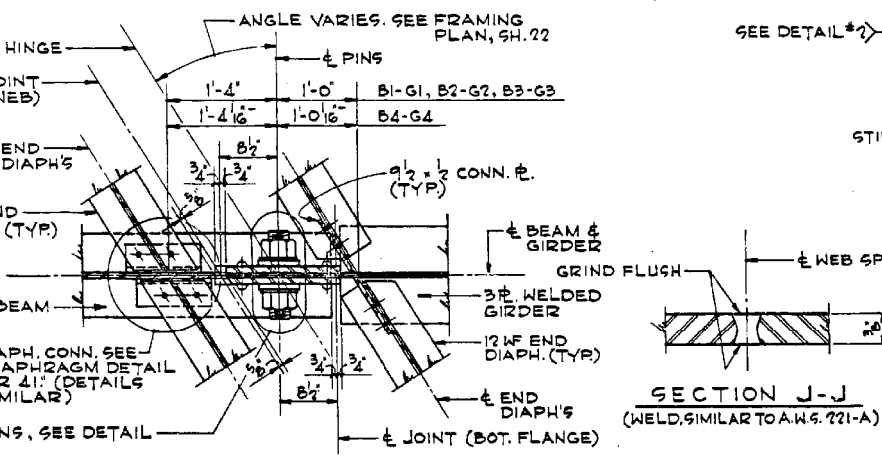
SPlice ELEVATION



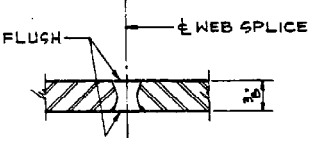
HINGE DETAIL - ELEVATION
SCALE: 1\"/>



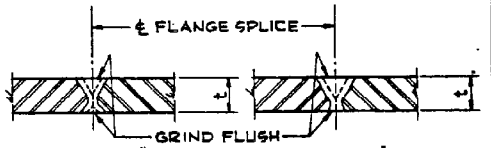
SECTION E-E
SCALE: 3/4\"/>



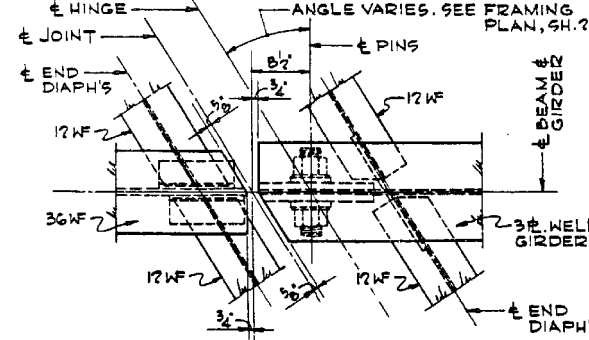
SECTION F-F
SHOWING DETAILS OF END DIAPHRAGMS D2, D6, D7 & D8 AT HINGE
SCALE: 1\"/>



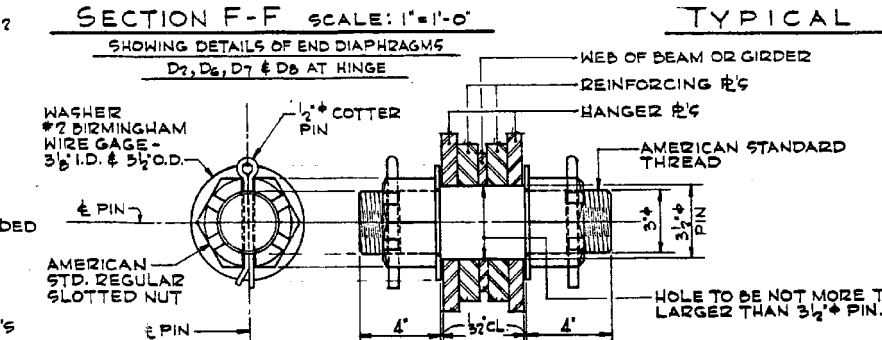
SECTION J-J
(WELD SIMILAR TO A.W.S. 221-A)



DETAIL #1 FOR R'S EQUAL OR MORE THAN 1\"/>
DETAIL #2 FOR R'S EQUAL OR MORE THAN 1/2\", BUT LESS THAN 1\"/>



SECTION G-G
SCALE: 1\"/>



PIN DETAIL
SCALE: 3\"/>

TYPICAL SHOP SPlice DETAILS
NOT TO SCALE

NOTE:
FOR BILL OF MATERIAL, SEE SH. 22.

ILLINOIS DIVISION OF HIGHWAYS
SOUTHWEST EXPRESSWAY
RAMPE OVER DES PLAINES RIVER
STEEL DETAILS
SCALE: AS NOTED DATE: 8-28-63

DE LEW, CATHER & CO. ENGINEERS
DESIGNED BY T.H. HOD
DRAWN BY J. CHALKIS
CHECKED BY J. MARTINS
IN CHARGE E.S. MARTINS
APPROVED L.N. RIAN

benesch
engineers · scientists · planners
Alfred Benesch & Company
205 North Michigan Avenue, Suite 2400
Chicago, Illinois 60601
312-565-0450 Job No. 10093

FILE NAME = 0161026_60J16_X12_existplan12.dgn	USER NAME = tjenicke	DESIGNED - FSM	REVISIONS -
		CHECKED - RMM	REVISIONS -
		DRAWN - FSM	REVISIONS -
		CHECKED - RMM	REVISIONS -
			REVISIONS -

STATE OF ILLINOIS
DEPARTMENT OF TRANSPORTATION

EXISTING PLANS - STEEL DETAILS (1 OF 2)
STRUCTURE NO. 016-1026
SHEET NO. SFX12 OF SFX30 SHEETS

FOR INFORMATION ONLY

F.A.P. RTE. 372	SECTION 2013-038B-R	COUNTY COOK	TOTAL SHEETS 821	SHEET NO. 572
CONTRACT NO. 60J16			ILLINOIS FED. AID PROJECT	

X:\1000005\100093\Eng_Docs_Phase_1\11\SN_016_1026_SB_1st_Ave_Ramp_cover_Planes_River_VFinal\1026\0161026_60J16_X12_existplan12.dgn 2:46:01 PM 6/23/2014