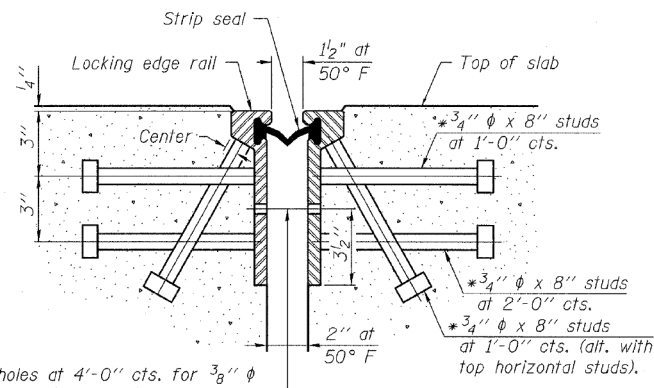


F.A.P. RTE.	SECTION	COUNTY	TOTAL SHEETS	SHEET NO.
373	0707-608 HB-I-4	COOK	40	29
STA.		TO STA.		
FED. ROAD DIST. NO.	ILLINOIS	FED. AID PROJECT		

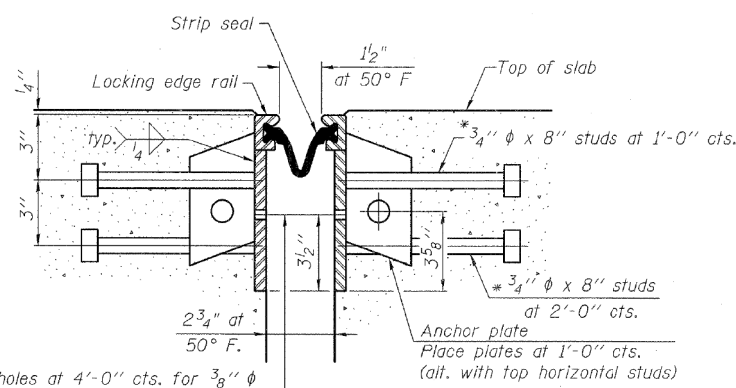
CONTRACT NO. 60C94

* Granular or solid flux filled headed studs conforming to Article 1006.32 of the Std. Specs., automatically end welded.



7/16" φ holes at 4'-0" cts. for 3/8" φ bolts. All bolts shall be burned, sawed, or chipped off flush with the plates after forms are removed, typ.

SECTION THRU ROLLED RAIL JOINT

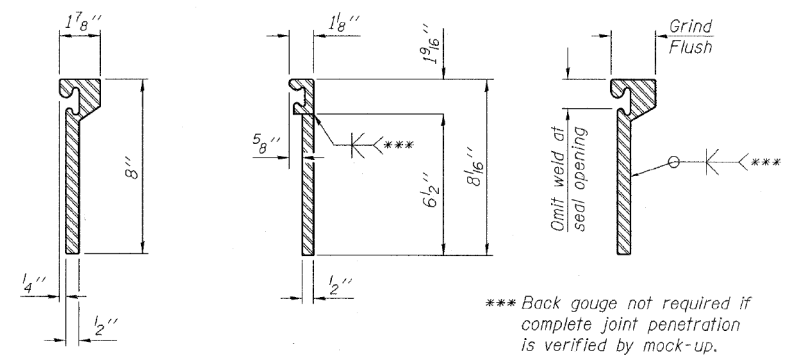


7/16" φ holes at 4'-0" cts. for 3/8" φ bolts. All bolts shall be burned, sawed, or chipped off flush with the plates after forms are removed, typ.

SECTION THRU WELDED RAIL JOINT

NOTES:

The strip seal shall be made continuous and shall have a minimum thickness of 1/4". The configuration of the strip seal shall match the configuration of the Locking Edge Rails. Open or "webbed" strip seal gland configurations are not permitted. The gland shall be sized for a maximum rated movement of 4 inches. The height and thickness of the Locking Edge Rails shown are minimum dimensions. The actual configuration of the Locking Edge Rails and matching strip seal may vary from manufacturer to manufacturer. Flanged edge rails will not be allowed. Locking Edge Rails may be spliced at slope discontinuities and stage construction joints. The manufacturer's recommended installation methods shall be followed. The joint opening and deck dimensions detailed on the superstructure are based on a rolled rail expansion joint. If the Contractor elects to use the welded rail expansion joint, the opening and deck dimensions shall be modified according to the dimensions detailed on this sheet. Required modifications shall be made at no additional cost to the State. All steel components shall be galvanized after fabrication according to Article 520.03 of the Standard Specifications.

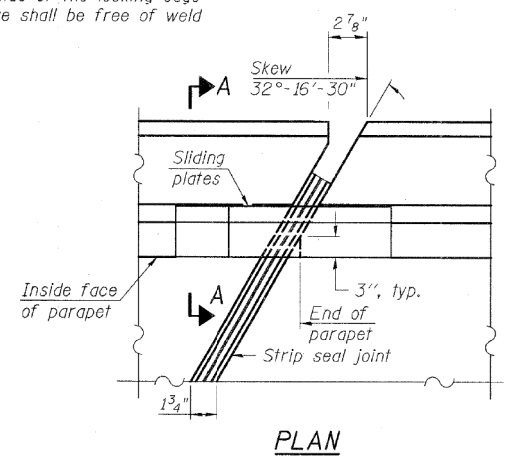


*** Back gouge not required if complete joint penetration is verified by mock-up.

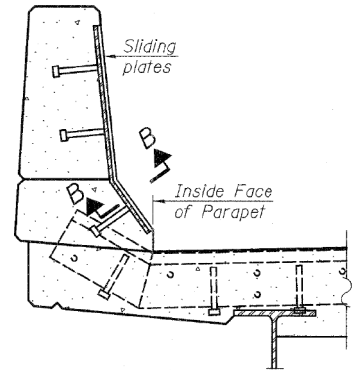
ROLLED (EXTRUDED) RAIL WELDED RAIL

LOCKING EDGE RAIL SPLICE
The inside of the locking edge rail groove shall be free of weld residue.

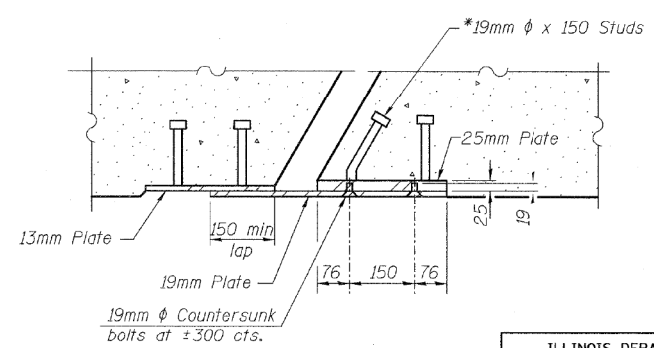
LOCKING EDGE RAILS



PLAN



SECTION A-A POINT BLOCK DETAILS (for skews > 30°)



SECTION B-B

BILL OF MATERIAL

Item	Unit	Total
Preformed Joint Strip Seal	Foot	75

REVISIONS	
NAME	DATE

ILLINOIS DEPARTMENT OF TRANSPORTATION
PREFORMED STRIP SEAL JOINT
 IL. RTE. 171
 OVER
 DES PLAINES RIVER
 F.A.P. RTE. 373 SECTION: 0707-608 HB-I-4
 COOK COUNTY STATION 106+26.32
 STRUCTURE NO. 016-1026
 SCALE: NONE DRAWN BY: D.L./F.M.
 DATE: DECEMBER 8, 2008 CHECKED BY: B.N.S./J.C.N.
CHRISTIAN-ROGE & ASSOC., INC.
 CHICAGO ILLINOIS

benesch
 engineers - scientists - planners
 Alfred Benesch & Company
 205 North Michigan Avenue, Suite 2400
 Chicago, Illinois 60601
 312-565-0450 Job No. 10093

FILE NAME =	USER NAME = tjenicke	DESIGNED - FSM	REVISED -
0161026_60J16_X30_existplan30.dgn	PLOT SCALE =	CHECKED - RMM	REVISED -
	PLOT DATE = 12/20/2013	DRAWN - FSM	REVISED -
		CHECKED - RMM	REVISED -

STATE OF ILLINOIS DEPARTMENT OF TRANSPORTATION

EXISTING PLANS (2008) - JOINT REPLACEMENT DETAILS
STRUCTURE NO. 016-1026

FOR INFORMATION ONLY

F.A.P. RTE.	SECTION	COUNTY	TOTAL SHEETS	SHEET NO.
372	2013-038B-R	COOK	821	590
CONTRACT NO. 60J16				
ILLINOIS FED. AID PROJECT				

SHEET NO. SFX30 OF SFX30 SHEETS

X:\100005\10093\Eng_Docs_Phase_1\161026_SB_1st_Ave_Ramp_cover_Des_Plaines_River\Final\Final_1026_0161026_60J16_X30_existplan30.dgn 6/23/2014 2:48:46 PM