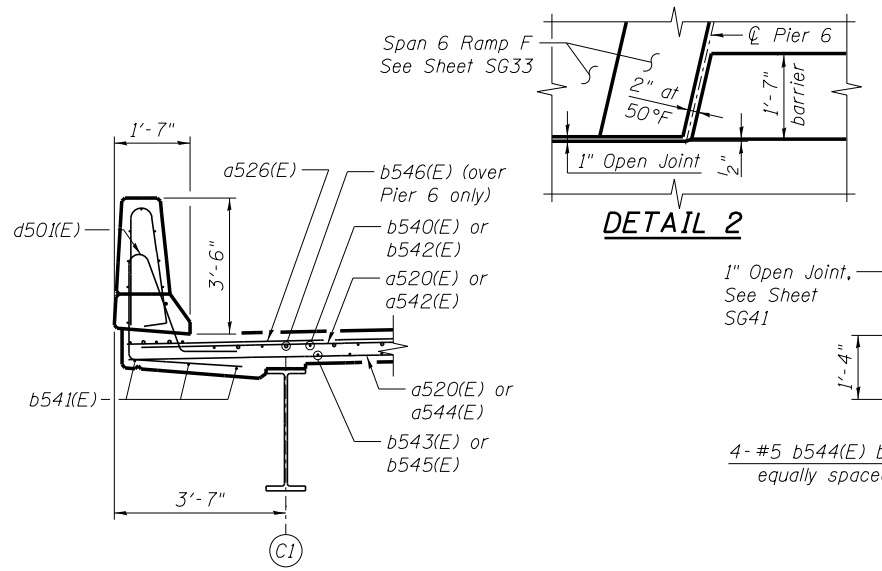


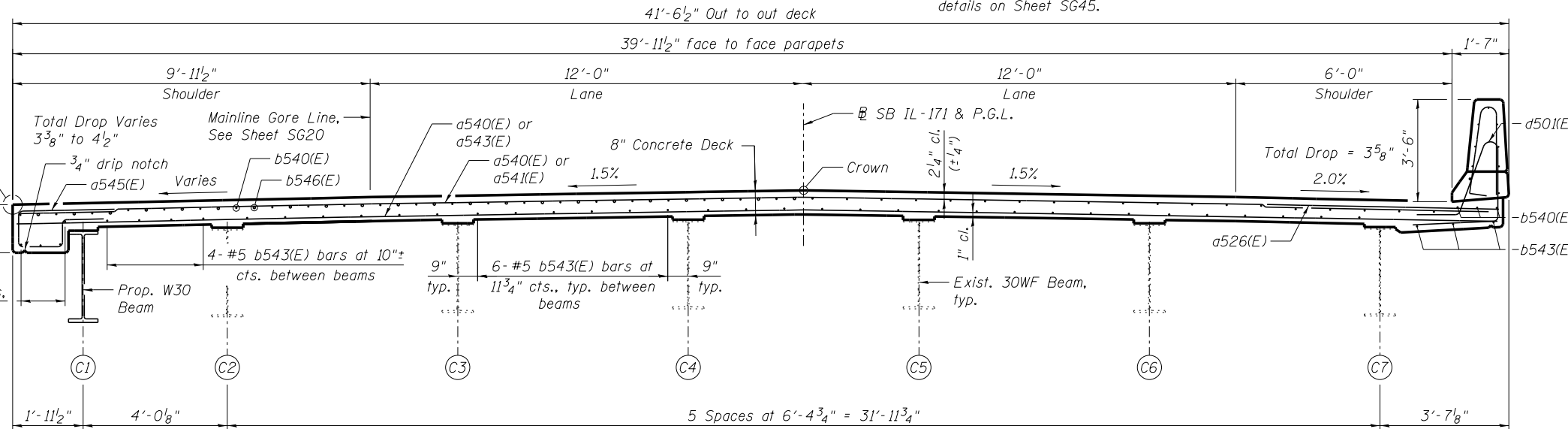
MINIMUM BAR LAP
(Slab)
#5 bar = 3'-3"
#6 bar = 3'-10"

- NOTES:**
1. For Superstructure Details and Section B-B, see Sheet SG41.
 2. For Bill of Material and Bar Bends, see Sheet SG43.
 3. For locations and spacing of Floor Drains, see Sheet SG3.
 4. Bars indicated thus 40x3-#5 etc. indicates 40 lines of bars with 3 lengths per line.
 5. Dimensions are based on a Rolled Rail Strip Seal Joint. If the Contractor elects to use the Welded Rail Strip Seal Joint, deck dimensions may require adjustments to satisfy the details on Sheet SG45.

PLAN



SECTION C-C



SECTION D-D

benesch
engineers · scientists · planners

Alfred Benesch & Company
205 North Michigan Avenue, Suite 2400
Chicago, Illinois 60601
312-565-0450 Job No. 10093

FILE NAME =	USER NAME = jsurber	DESIGNED - JLS	REVISED -
0160486.60J16.035.Deck.Plan.6and7.dgn		CHECKED - MFH	REVISED -
		DRAWN - RMG	REVISED -
		CHECKED - MFH	REVISED -

STATE OF ILLINOIS
DEPARTMENT OF TRANSPORTATION

DECK PLAN AND CROSS SECTION SPANS 6 AND 7
STRUCTURE NO. 016-0486

F.A.P. RTE.	SECTION	COUNTY	TOTAL SHEETS	SHEET NO.
373	2013-038B-R	COOK	821	625
CONTRACT NO.			60J16	
ILLINOIS FED. AID PROJECT				

SHEET NO. SG35 OF SG100 SHEETS

Y:\chicago\100005\100093\Eng_Docs\over_Canal\Final\Final_0486_0487_1st_Ave.over_Canal\Final_0486_0487_16_035_Deck_Plan_6and7.dgn 7:29:57 PM 8/6/2014