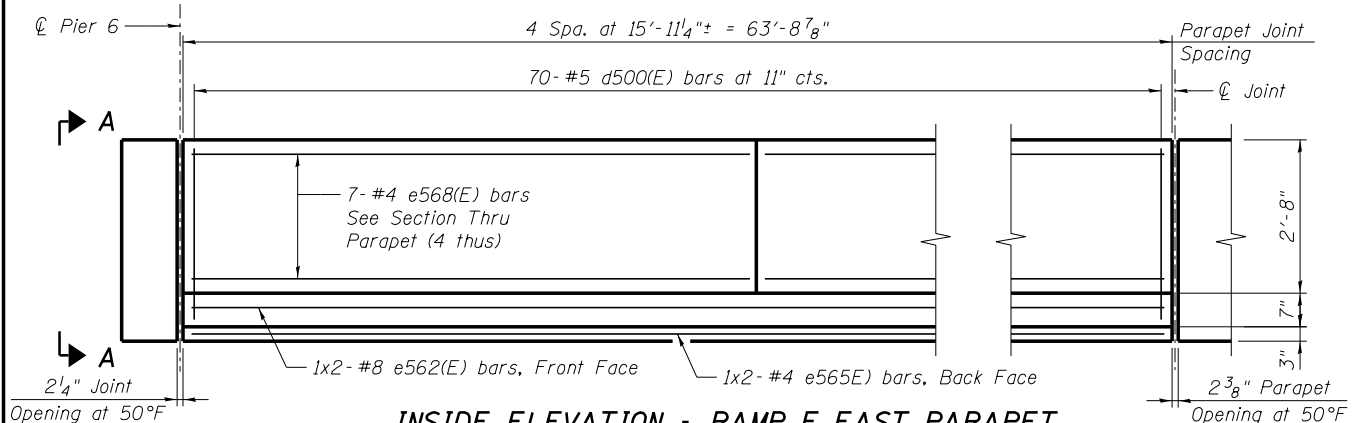
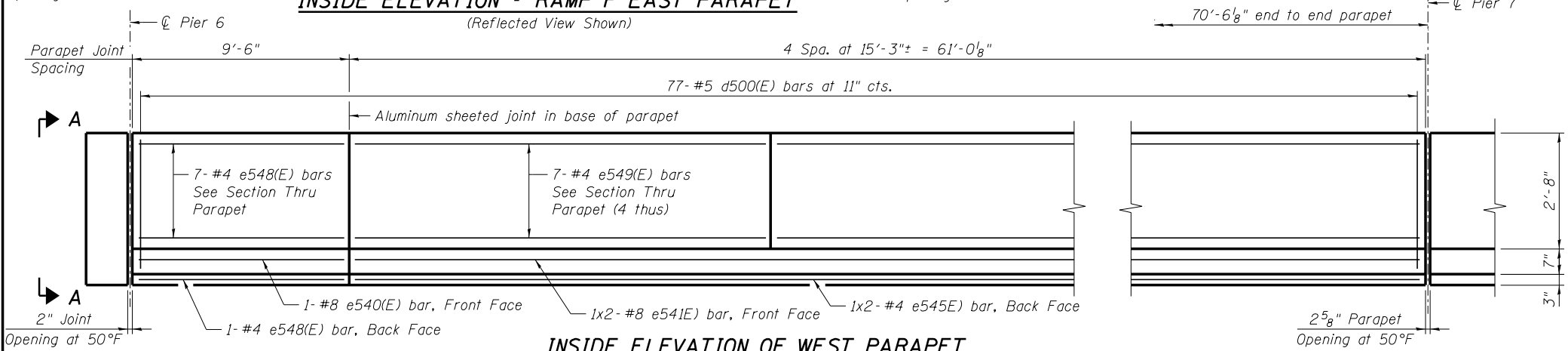


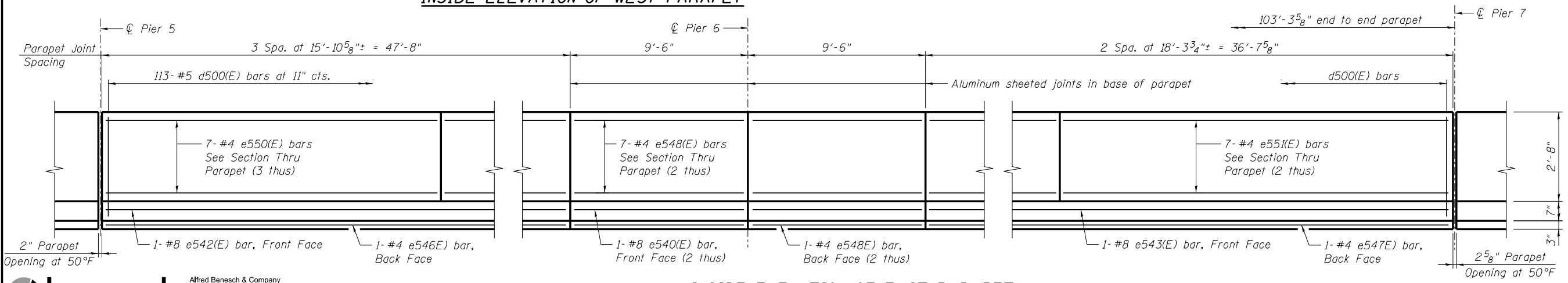
INSIDE ELEVATION - RAMP F WEST PARAPET



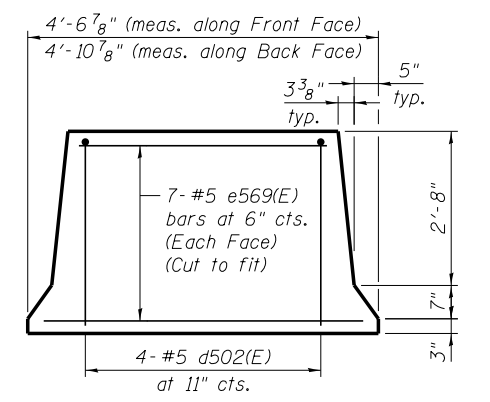
INSIDE ELEVATION - RAMP F EAST PARAPET



INSIDE ELEVATION OF WEST PARAPET



INSIDE ELEVATION OF EAST PARAPET



VIEW A-A

MINIMUM BAR LAP

- #4 Bar = 2'-0"
- #8 Bar = 5'-2"

NOTES:

1. All dimensions shown are along the toe of the parapet (gutterline).
2. Bars indicated thus 1x2-#8 etc. indicates 1 line of bars with 2 lengths per line.
3. See Sheet SG41 for cross section thru parapet and parapet joint details.

benesch
engineers · scientists · planners
Alfred Benesch & Company
205 North Michigan Avenue, Suite 2400
Chicago, Illinois 60601
312-565-0450 Job No. 10093

FILE NAME =	USER NAME = jsurber	DESIGNED - JLS	REVISED -
		CHECKED - MFH	REVISED -
		DRAWN - RMG	REVISED -
		CHECKED - MFH	REVISED -
PLOT SCALE =			
PLOT DATE = 8/6/2014			

STATE OF ILLINOIS
DEPARTMENT OF TRANSPORTATION

PARAPET DETAILS SPANS 6 AND 7
STRUCTURE NO. 016-0486

F.A.P. RTE.	SECTION	COUNTY	TOTAL SHEETS	SHEET NO.
373	2013-038B-R	COOK	821	629
CONTRACT NO.			60J16	
ILLINOIS FED. AID PROJECT				

SHEET NO. SG39 OF SG100 SHEETS

Y:\chicago\100005\10093\Eng_Docs_Phase_11\SN_016_0486_0487_1st_Ave_Over_Canal_Final\Final_0486\0160486_60J16_039_Parapet_Details_Span6_7.dgn 7:30:02 PM 8/6/2014