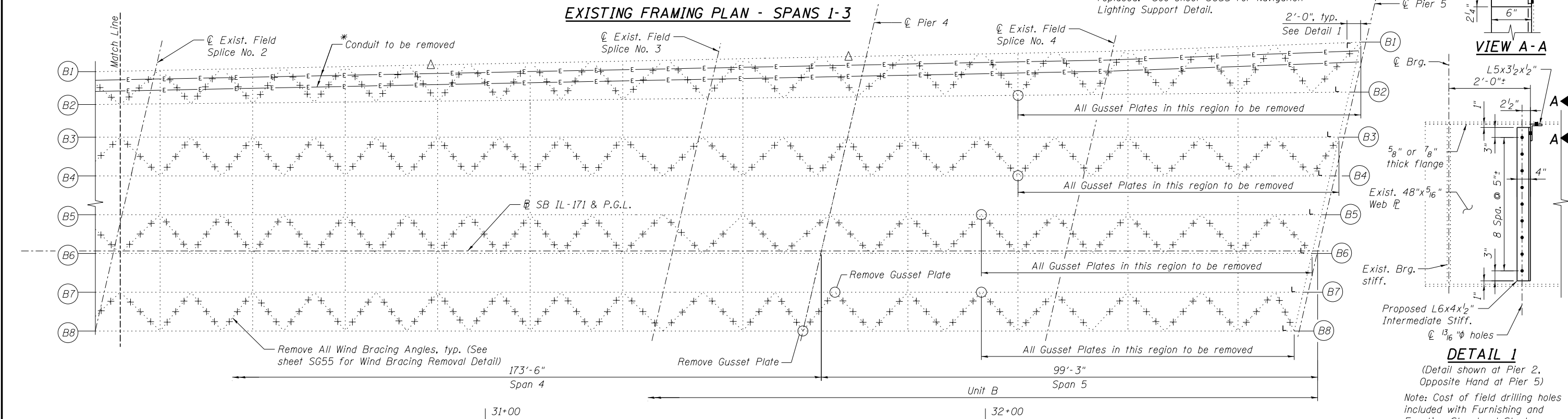
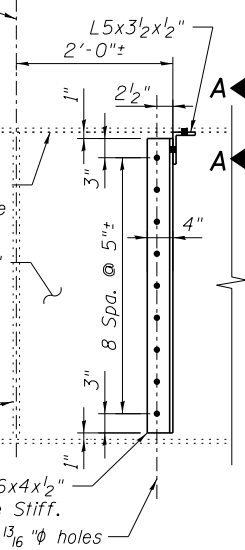


\* The existing conduit contains live electrical cables that power the existing navigation lighting attached to the fascia girder. Note that the navigation lighting must remain in service without interruption. See Lighting Plans for additional details and requirements. Coordinate the removal of the existing conduit with the installation of the new navigation lighting and corresponding new conduit and wiring. See sheet SG54 for Conduit Removal Detail.

**EXISTING FRAMING PLAN - SPANS 1-3**



**VIEW A-A**



**EXISTING FRAMING PLAN - SPANS 4-5**

**LEGEND**

---x---x---x--- Remove existing steel

**NOTES:**

1. Removal of steel paid for as "Structural Steel Removal". Replacement of steel paid for as "Furnishing and Erecting Structural Steel".
2. See sheet SG55 for End Diaphragm Removal and Replacement Details.
3. See Sheet SG54 for new studs added at Exist. Field Splice No. 1 thru No. 4 in Spans 3-5.
4. The Engineer will inspect all existing bearing anchor bolts to ascertain their condition. Any damaged anchor bolts shall be reported to the BBS for further direction. The Contractor shall provide all means and access for the Engineer to perform the anchor bolt inspections. All costs associated with providing the access shall be considered included in the unit price for "Furnishing and Erecting Structural Steel".
5. Install new anchor bolt with diameter specified above, at existing bearing. Anchor Bolts shall be ASTM F1554, Grade 105, all-thread or an Engineer-approved alternate material. The corresponding specified grade of AASHTO M314 anchor bolts may be used in lieu of ASTM F1554. If a drilled hole in the existing concrete does not exist, or is not deep enough to allow for the new anchor bolt projection above the existing side retainer angle to match the projection of the other existing anchor bolts, then a hole shall be drilled in the existing concrete to the appropriate depth. Holes in the existing concrete may be drilled through the existing holes in the bottom bearing plate, if this can be done without damaging the bearing. This work shall also include all labor, equipment and materials, if necessary, to remove and reinstall diaphragms or cross frames with new high-strength bolts to facilitate replacing anchor bolts. Drilled and set anchors shall be installed according to Article 521.06 of the Standard Specifications.

**benesch**  
engineers · scientists · planners

Alfred Benesch & Company  
205 North Michigan Avenue, Suite 2400  
Chicago, Illinois 60601  
312-565-0450 Job No. 10093

FILE NAME =	USER NAME = jsurber	DESIGNED - DTS	REVISD -
		CHECKED - TPS	REVISD -
		DRAWN - RMG	REVISD -
		CHECKED - TPS	REVISD -

**STATE OF ILLINOIS**  
**DEPARTMENT OF TRANSPORTATION**

**STEEL REMOVAL AND REPAIR PLAN UNIT A & B**  
**STRUCTURE NO. 016-0486**

SHEET NO. SG52 OF SG100 SHEETS

F.A.P. R.T.E.	SECTION	COUNTY	TOTAL SHEETS	SHEET NO.
373	2013-038B-R	COOK	821	642
CONTRACT NO.			60J16	

ILLINOIS FED. AID PROJECT

Y:\chicago\100005\100093\Eng\_Docs\over\_Canal\Final\Final\Phase\_1\16\_052\_Steel\_Repair\_Plan\_Spans\_1 thru\_5.dgn 7:30:30 PM 8/6/2014