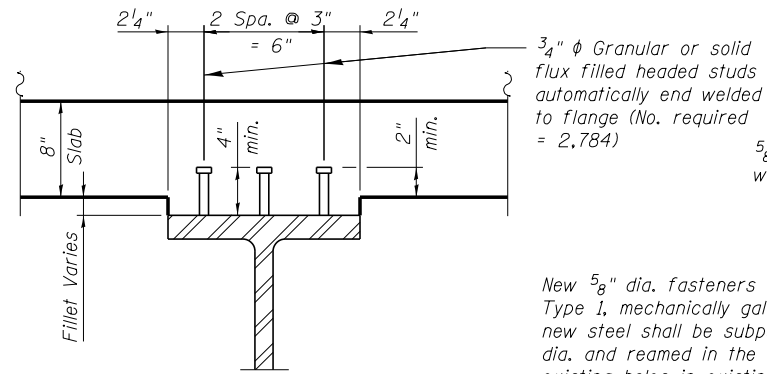


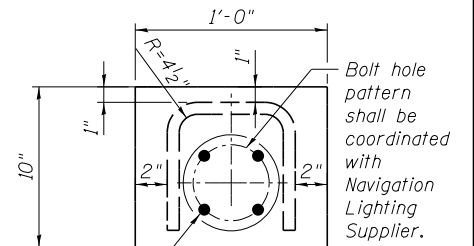
BEAM A1-A8 SPANS 1-2 ELEVATION

(Shear Stud Connector spacing shown for Beams A2-A8, Beam A1 similar)

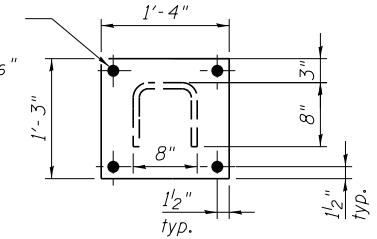


SECTION D-D

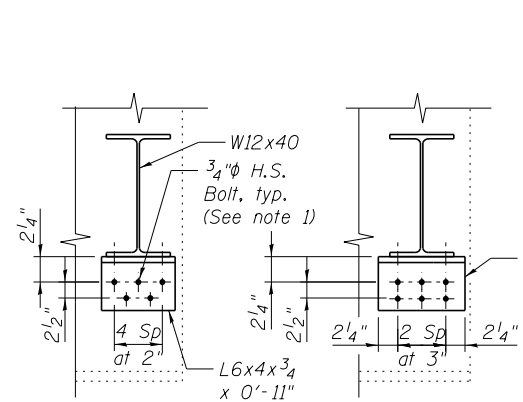
New 5/8" dia. fasteners shall be ASTM A325 Type 1, mechanically galvanized bolts. Holes in new steel shall be subpunched or subdrilled 9/16" dia. and reamed in the field to 1/2" dia. Reuse existing holes in existing steel. Contractor to field verify location, size and spacing of existing holes prior to ordering new materials. Cost included with "Furnishing and Erecting Structural Steel".



SECTION A-A



SECTION B-B

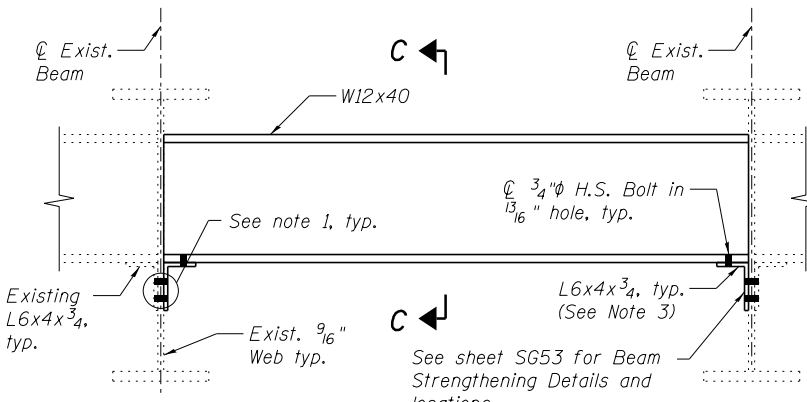


SECTION C-C

(At Unit A & Ramp F)

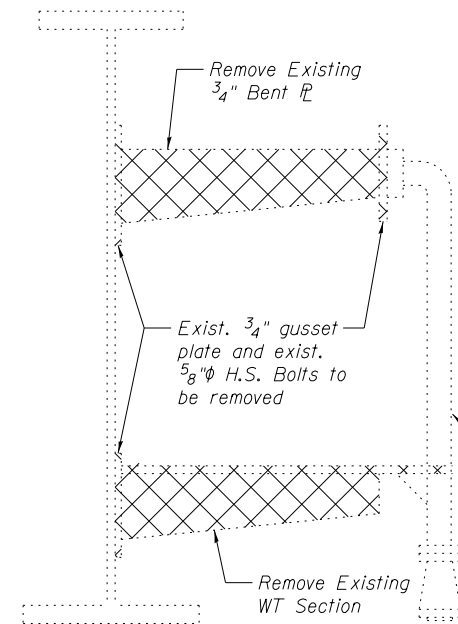
SECTION C-C

(At Unit D)



END DIAPHRAGM REPLACEMENT DETAIL

(No. of Locations 4)



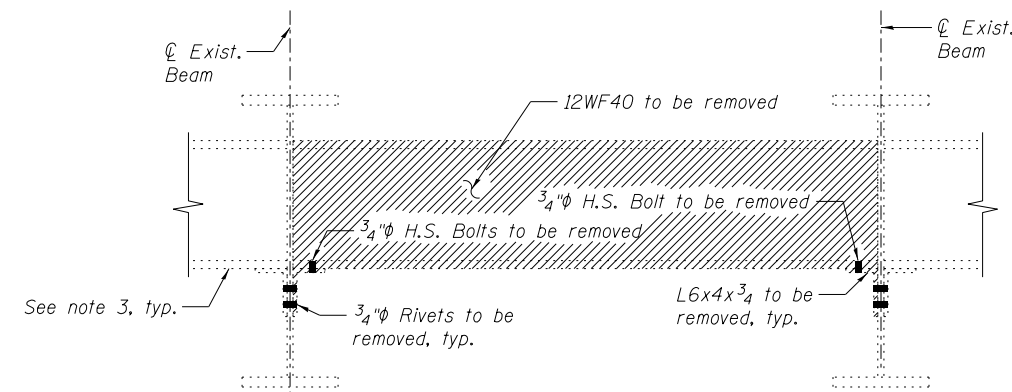
NAVIGATION LIGHTING SUPPORT DETAIL

(3 Locations)

Note: All Navigational Lighting Support Details shall be coordinated with Navigational Light Supplier. Steel removal is paid for as "Structural Steel Removal". New steel is paid for as "Furnishing and Erecting Structural Steel".

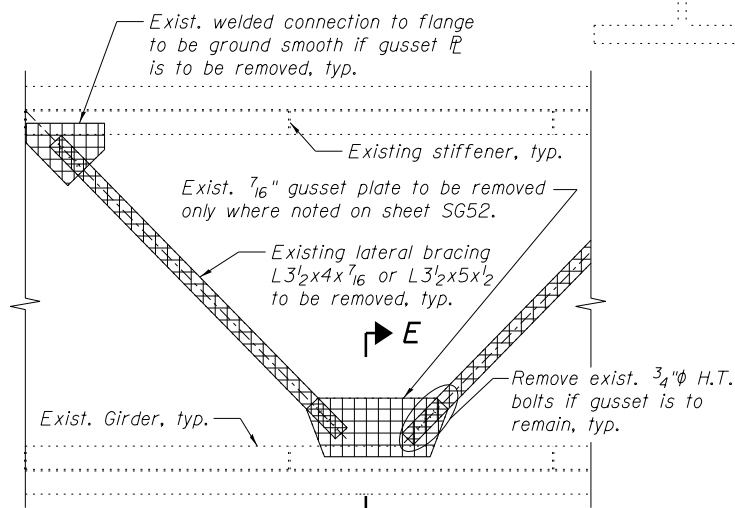
NOTES:

1. New 3/4" dia. fasteners shall be ASTM A325 Type 1, mechanically galvanized bolts. Holes in new steel shall be subpunched or subdrilled 1/2" dia. and reamed in the field to 13/16" dia. Reuse existing holes in existing steel. Contractor to field verify location, size and spacing of existing holes prior to ordering new materials. Cost included with "Furnishing and Erecting Structural Steel". Unless noted otherwise.
2. See sheets SG52 & SG53 for location of diaphragm replacement and removal.
3. Contractor shall ensure that the adjacent existing diaphragm is supported during angle replacement under proposed diaphragm. Cost included with "Structural Steel Removal".
4. See sheet SG52 for location of wind bracing removal.
5. See sheet SG52 for location of Navigational Lighting Supports.
6. Load carrying components designated "NTR" shall conform to the Impact Testing Requirement, Zone 2.



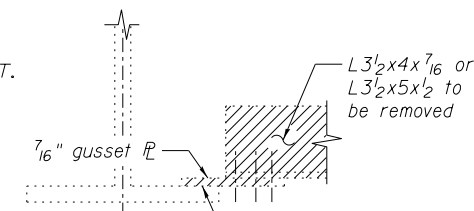
EXISTING END DIAPHRAGM REMOVAL DETAIL

(No. of Locations 4)



WIND BRACING REMOVAL DETAIL

(Removal of lateral bracing and gusset plates paid for as "Structural Steel Removal")
(211 angles to be removed)
(86 gusset plates to be removed)



SECTION E-E

Exist. Weld connection, see special provision for "Structural Steel Removal".

benesch
engineers · scientists · planners
Alfred Benesch & Company
205 North Michigan Avenue, Suite 2400
Chicago, Illinois 60601
312-565-0450 Job No. 10093

FILE NAME =	USER NAME = jsurber	DESIGNED - TJJ/DTS	REVISIONS -
		CHECKED - TPS/LRB	REVISIONS -
		DRAWN - TJJ/DTS	REVISIONS -
		CHECKED - TPS/LRB	REVISIONS -

**STATE OF ILLINOIS
DEPARTMENT OF TRANSPORTATION**

**STRUCTURAL STEEL REPAIR DETAILS (2 OF 2)
STRUCTURE NO. 016-0486**

SHEET NO. SG55 OF SG100 SHEETS

F.A.P. RTE.	SECTION	COUNTY	TOTAL SHEETS	SHEET NO.
373	2013-038B-R	COOK	821	645
CONTRACT NO.			60J16	
ILLINOIS FED. AID PROJECT				

Y:\chicago\100005\100093\Eng_Docs\over_Canal\Final\Final_0486\016_0486_Steel_Repair_Details.2_of_2.dgn 7:30:35 PM 8/6/2014