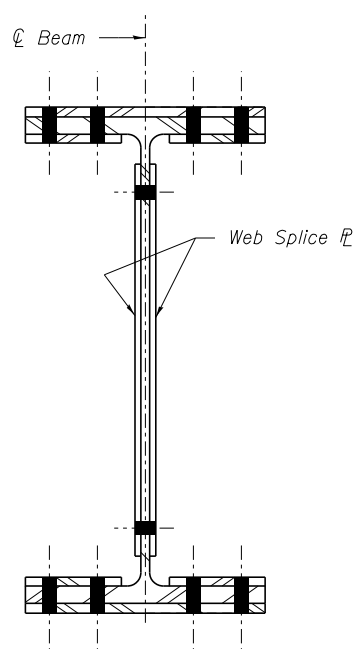
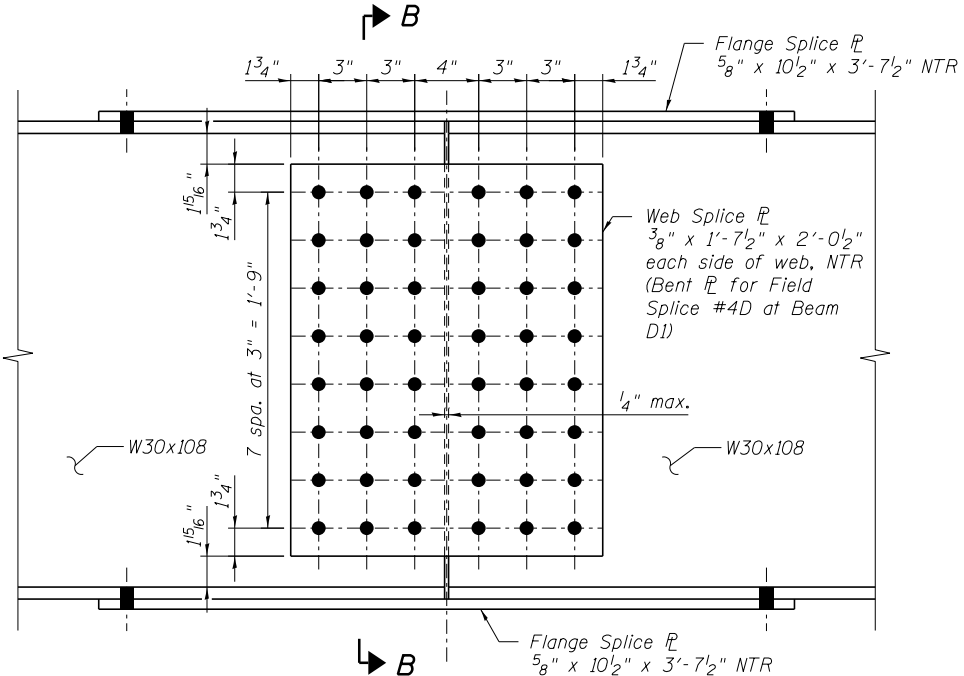


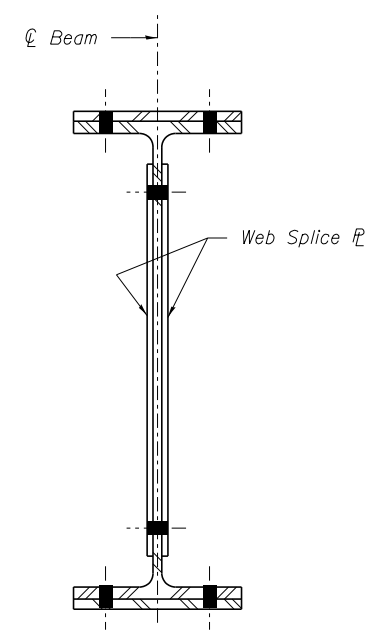
**ELEVATION - FIELD SPLICE - BEAM C1**  
(48 Bolts per Web Splice)



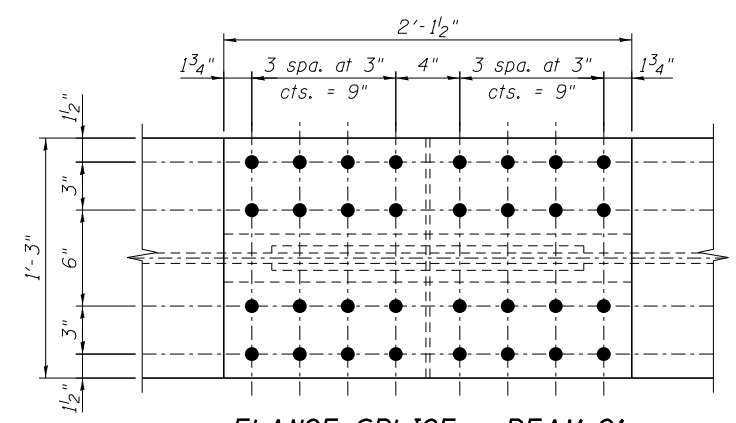
**SECTION A-A**



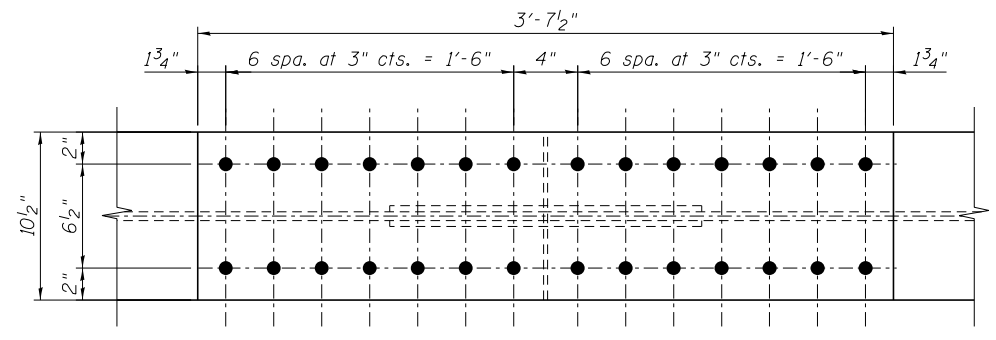
**ELEVATION - FIELD SPLICE - BEAMS D1 & D2**  
(48 Bolts per Web Splice)



**SECTION B-B**



**FLANGE SPLICE - BEAM C1**  
(Top & Bottom Flanges)  
(32 Bolts per Flange Splice)



**TYPICAL FLANGE SPLICE - BEAMS D1 & D2**  
(Top & Bottom Flanges)  
(28 Bolts per Flange Splice)

**TOP OF C1 BEAM ELEVATIONS**

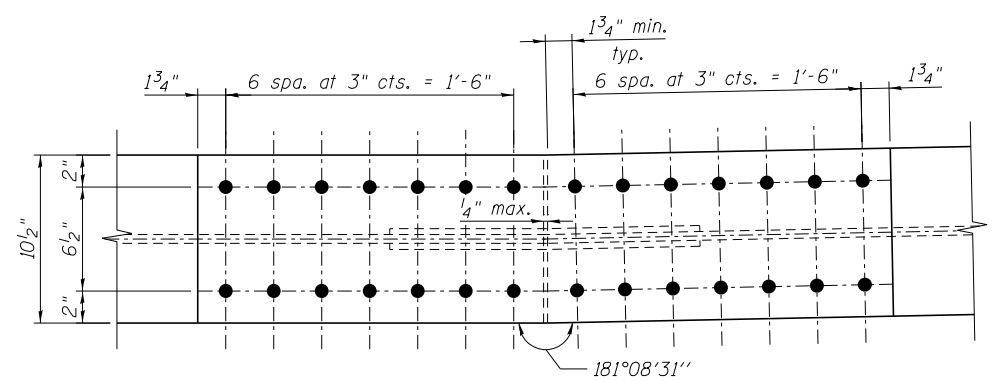
| Location           | Beam C1 |
|--------------------|---------|
| ☉ N. Brq. Pier 5   | 624.07  |
| ☉ Pier 6           | 623.85  |
| ☉ Field Splice #1C | 623.80  |
| ☉ S. Brq. Pier 7   | 623.56  |

For fabricator use only.

**TOP OF D1 & D2 BEAM ELEVATIONS**

| Location           | Beam D1 | Beam D2 |
|--------------------|---------|---------|
| ☉ N. Brq. Pier 7   | 623.54  | 623.72  |
| ☉ Pier 8           | 623.37  | 623.55  |
| ☉ Field Splice #1D | 623.33  | 623.50  |
| ☉ Pier 9           | 623.20  | 623.37  |
| ☉ Field Splice #2D | 623.17  | 623.34  |
| ☉ Field Splice #3D | 623.08  | 623.25  |
| ☉ Pier 10          | 623.05  | 623.22  |
| ☉ Field Splice #4D | 622.93  | 623.10  |
| ☉ Pier 11          | 622.89  | 623.07  |
| ☉ Brq. N. Abut.    | 622.76  | 622.96  |

For fabricator use only.



**FLANGE SPLICE - FIELD SPLICE #4D - BEAM D1**  
(Top & Bottom Flanges)  
(28 Bolts per Flange Splice)

**NOTES:**

- All Splice Plates shall be AASHTO M270 Grade 50 steel.
- All Splice Bolts shall be 7/8"  $\phi$  ASTM A325 High Strength with 15/16"  $\phi$  holes.
- Load carrying components designated "NTR" shall conform to the Impact Testing Requirements, Zone 2.
- See sheet SG56 for Spans 6-7 framing plan.
- See sheet SG58 for Spans 8-12 framing plan.

**benesch**  
engineers · scientists · planners

Alfred Benesch & Company  
205 North Michigan Avenue, Suite 2400  
Chicago, Illinois 60601  
312-565-0450 Job No. 10093

|                                      |                     |                   |           |
|--------------------------------------|---------------------|-------------------|-----------|
| FILE NAME =                          | USER NAME = jsurber | DESIGNED - TJJ    | REVISED - |
| 0160486.60J16.060.Splice.Details.dgn |                     | CHECKED - AJK/LRB | REVISED - |
|                                      |                     | DRAWN - TJJ       | REVISED - |
|                                      |                     | CHECKED - AJK/LRB | REVISED - |
|                                      |                     |                   |           |

**STATE OF ILLINOIS**  
**DEPARTMENT OF TRANSPORTATION**

**GIRDER SPLICE DETAILS**  
**STRUCTURE NO. 016-0486**

SHEET NO. SG60 OF SG100 SHEETS

|                           |             |        |              |           |
|---------------------------|-------------|--------|--------------|-----------|
| F.A.P. R.T.E.             | SECTION     | COUNTY | TOTAL SHEETS | SHEET NO. |
| 373                       | 2013-038B-R | COOK   | 821          | 650       |
| CONTRACT NO.              |             |        | 60J16        |           |
| ILLINOIS FED. AID PROJECT |             |        |              |           |

Y:\chicago\100005\10093\Eng\_Docs\_Phase II\SN\_016\_0486\_0487\_1st\_Ave\_over\_Canal\Final\Final\_0486\_016\_060.Splice\_Details.dgn 7:30:45 PM 8/6/2014