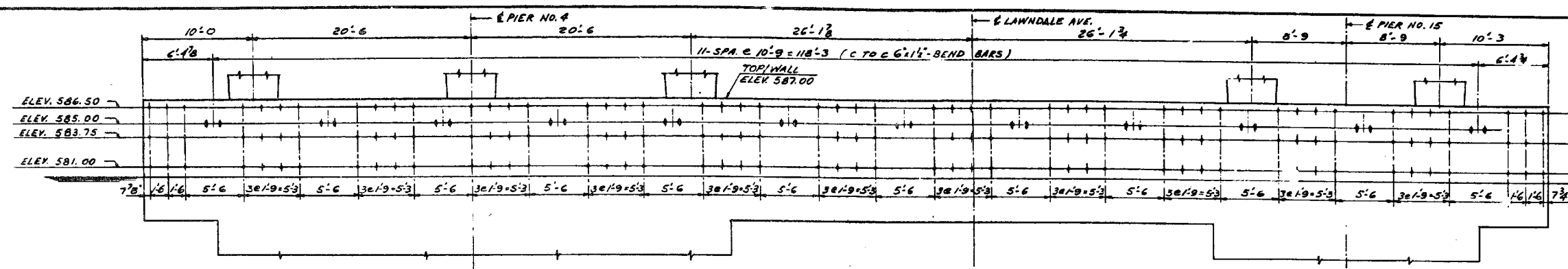
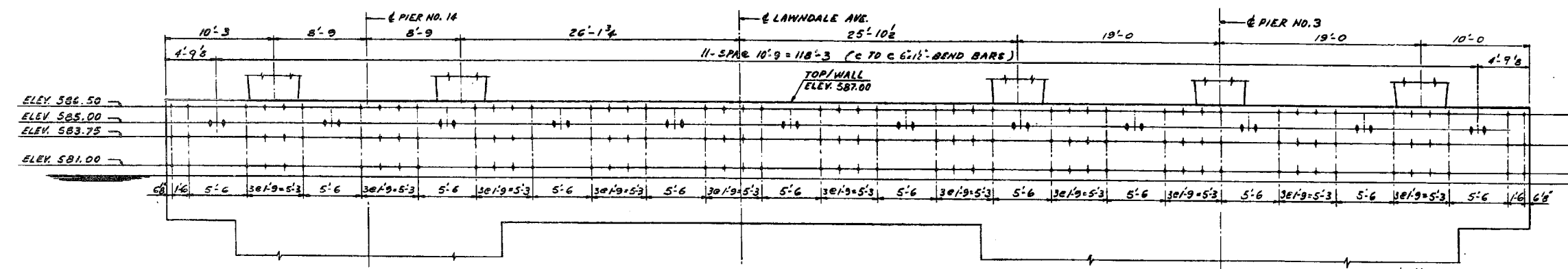


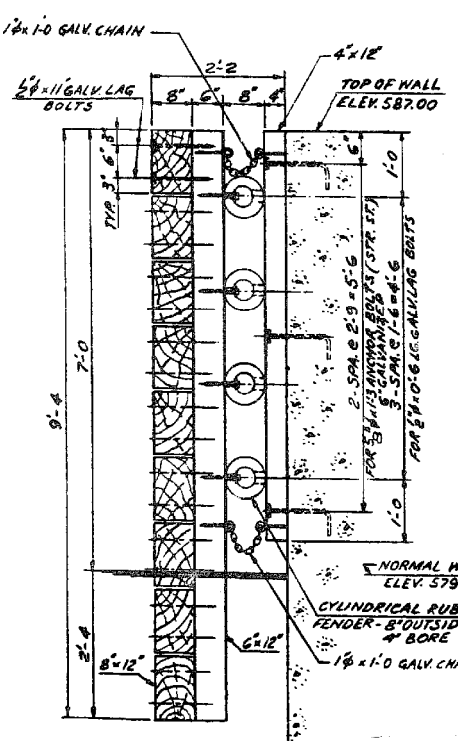
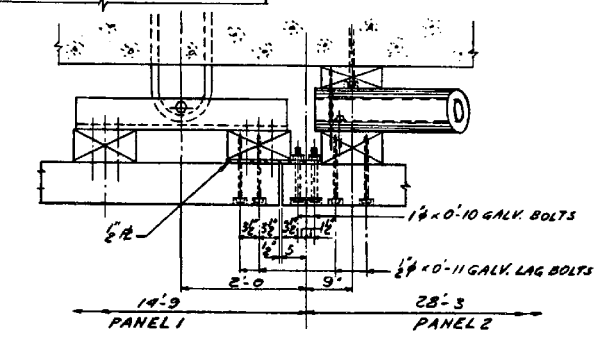
| F.A. RTE. | SECTION | EXPRESSWAY | TOTAL SHEETS | SHEET NO. |
|---|-----------|------------|--------------|-----------|
| 133 | 0707-626B | SANITARY | 95 | 46 |
| STA. | | TO STA. | | |
| FED. ROAD DIST. NO. 7 ILLINOIS FED. AID PROJECT | | | | |



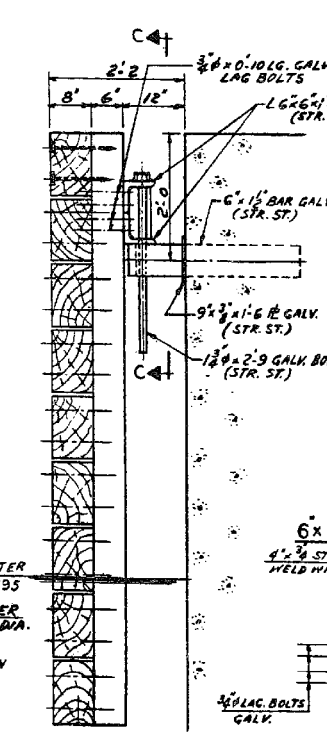
ANCHOR BOLTS LAYOUT AT PIERS NO.4 & NO.15
(ELEVATION SHOWN FROM CANAL)
SCALE: 3/16" = 1'-0"



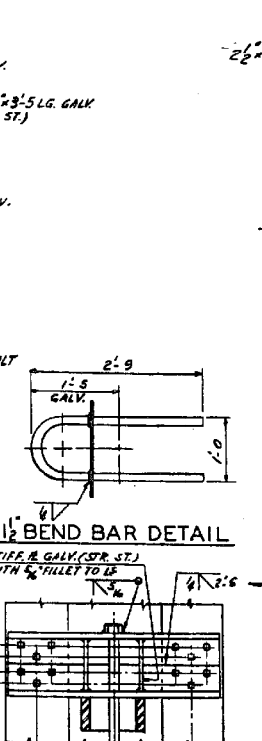
ANCHOR BOLTS LAYOUT AT PIERS NO.14 & NO.3
(ELEVATION SHOWN FROM CANAL)
SCALE: 3/16" = 1'-0"



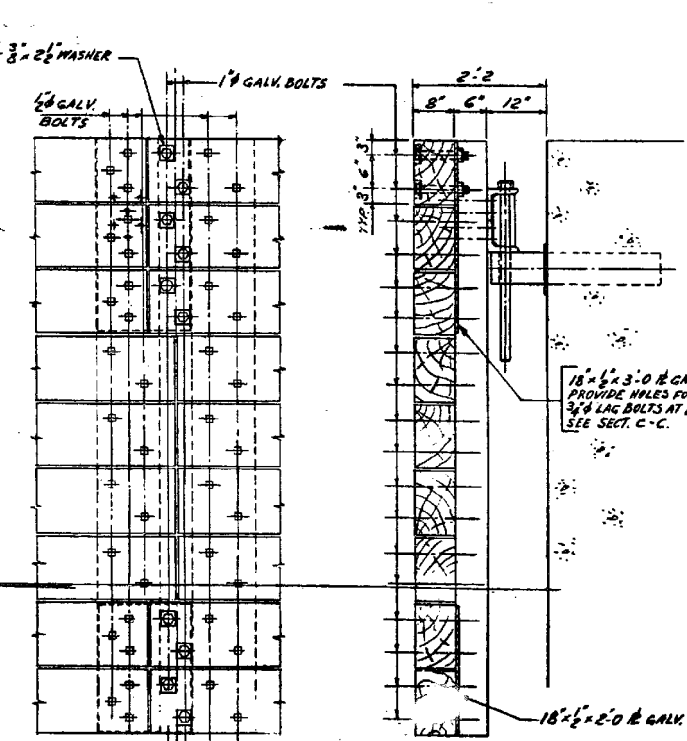
SECTION A-A
SCALE: 3/16" = 1'-0"



SECTION B-B
SCALE: 3/16" = 1'-0"



SECTION C-C
SCALE: 3/16" = 1'-0"



| PIER FENDER AT PIER NO.3 & NO.14 | | |
|----------------------------------|----------|-------|
| PIER FENDER QUANTITIES * | | |
| TIMBER | MBM | 18.4 |
| CYLINDRICAL RUBBER FENDER | LIN. FT. | 307 |
| STRUCTURAL STEEL | LBS. | 7,150 |
| HARDWARE | LBS. | 1,830 |

| PIER FENDER AT PIER NO.4 & NO.15 | | |
|----------------------------------|----------|-------|
| PIER FENDER QUANTITIES * | | |
| TIMBER | MBM | 14.8 |
| CYLINDRICAL RUBBER FENDER | LIN. FT. | 320 |
| STRUCTURAL STEEL | LBS. | 7,450 |
| HARDWARE | LBS. | 1,850 |

* QUANTITIES SHOWN FROM CELL TO CELL FOR ONE PIER FENDER.
TIMBER: DEMERARA GREEN HART (NECTANDRA RODIOEI)

| REVISIONS | |
|--------------|------|
| NAME | DATE |
| | |
| DESIGNED ST. | |
| REVIEWED CWW | |

| | |
|---------------------------------|-------------------|
| ILLINOIS DIVISION OF HIGHWAYS | |
| SOUTHWEST EXPRESSWAY | |
| F.A. RT. 133 | |
| LAWDALE AVE. STRUCTURE OVER | |
| CHICAGO SANITARY AND SHIP CANAL | |
| SECTION 0707-626 B | |
| PIER FENDER - DETAILS | |
| SCALE: HORIZ. 3/16" = 1'-0" | DRAWN BY E.M. |
| DATE: 6-5-63 | CHECKED BY L.D.B. |

benesch
engineers · scientists · planners
Alfred Benesch & Company
205 North Michigan Avenue, Suite 2400
Chicago, Illinois 60601
312-565-0450 Job No. 10093

| | | | |
|--------------------------------------|-----------------------|----------------|-------------|
| FILE NAME = | USER NAME = tjenicke | DESIGNED - FSM | REVISIONS - |
| 0160486.60J16.X09.fender details.dgn | PLOT SCALE = | CHECKED - RMM | REVISIONS - |
| | PLOT DATE = 6/23/2014 | DRAWN - FSM | REVISIONS - |
| | | CHECKED - RMM | REVISIONS - |

STATE OF ILLINOIS
DEPARTMENT OF TRANSPORTATION

EXISTING PLANS PIER FENDER DETAILS
STRUCTURE NO. 016-0486
SHEET NO. SGX9 OF SGX48 SHEETS

FOR INFORMATION ONLY

| F.A.P. RTE. | SECTION | COUNTY | TOTAL SHEETS | SHEET NO. |
|---------------------------|-------------|--------|--------------|--------------------|
| 373 | 2013-038B-R | COOK | 821 | 699 |
| | | | | CONTRACT NO. 60J16 |
| ILLINOIS FED. AID PROJECT | | | | |

X:\1000005\10093\Eng_Docs_Phase_1\11\SN_016_0486_0487_1st_Ave.cover_Canal\Final\Final_0486\0160486_60J16.X09.fender_details.dgn 2:54:36 PM 6/23/2014