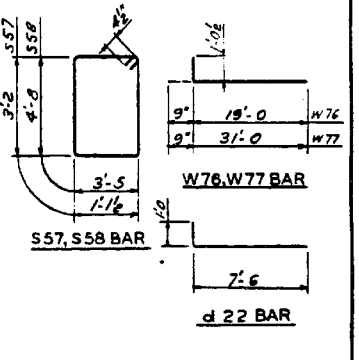
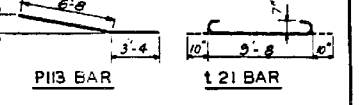


F.A. RTE.	SECTION	EXPRESSWAY	TOTAL SHEETS	SHEET NO.
133	0707-626B	SOUTHWEST	99	47
STA.	TO STA.			
FED. ROAD DIST. NO. 7	RAILROAD	FED. AID PROJECT		

BILL OF REINFORCEMENT				
BAR NO.	SIZE	LENGTH	SHAPE	
d22	60	10	8'-6"	
P112	12	10	23'-7"	
P113	10	4	10'-0"	
P114	12	5	31'-10"	
P115	24	10	22'-4"	
P116	2	5	10'-4"	
P117	5	5	9'-1"	
P118	3	5	34'-6"	
P119	2	5	12'-0"	
P120	4	5	8'-4"	
P121	2	5	3'-5"	
P122	2	5	4'-7"	
P123	2	5	14'-1"	
P124	2	5	11'-2"	
P125	4	5	13'-5"	
P126	4	5	9'-9"	
S57	93	4	9'-4"	
S58	49	4	16'-11"	
E21	48	7	11'-4"	
U131	110	5	9'-2"	
U132	110	5	7'-7"	
U133	17	5	5'-6"	
U134	60	4	7'-7"	
U135	60	4	8'-4"	
U136	66	4	9'-1"	
U137	28	4	9'-1"	
U138	4	5	3'-9"	
U139	15	4	7'-11"	
U140	49	4	9'-4"	
U145	18	4	5'-0"	
U146	35	4	5'-6"	
V42	60	10	33'-3"	
W76	6	11	18'-9"	
W77	6	11	31'-9"	
W78	8	11	11'-0"	
W79	6	4	18'-4"	
W80	6	4	30'-4"	
W81	12	5	24'-5"	
W82	12	11	25'-0"	

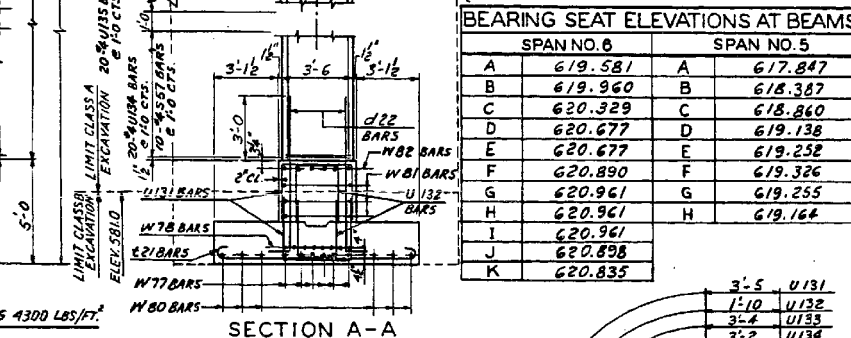
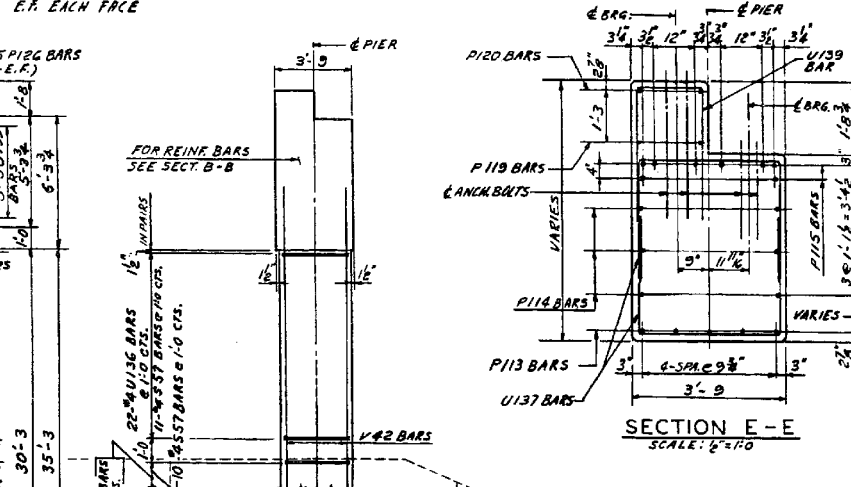
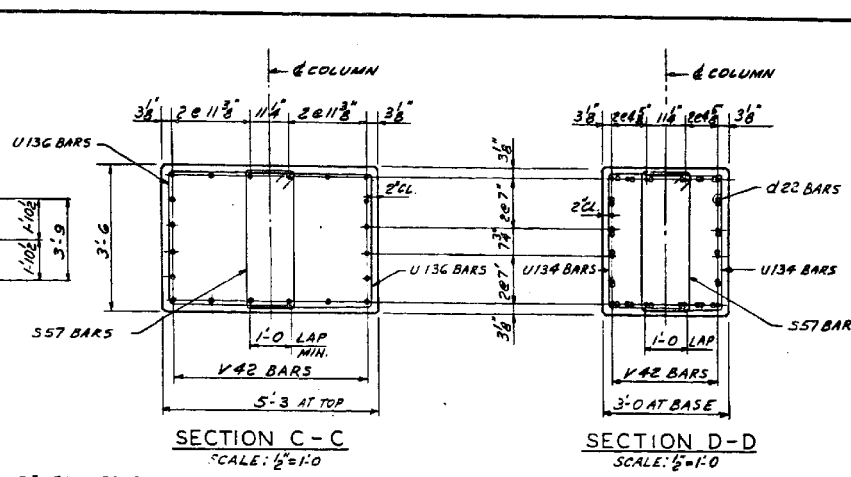
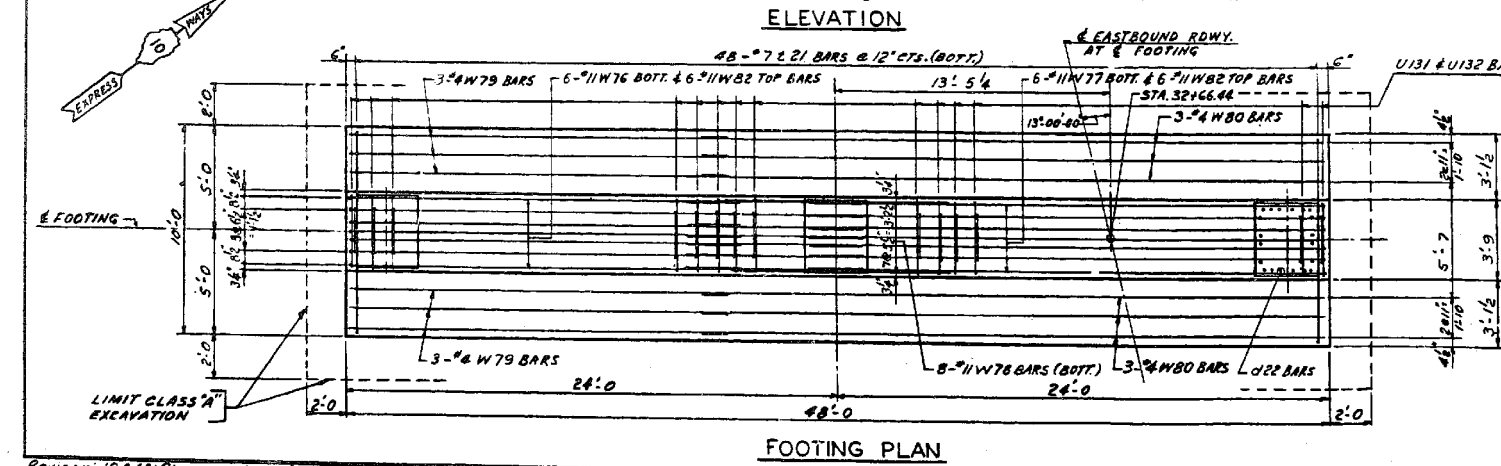
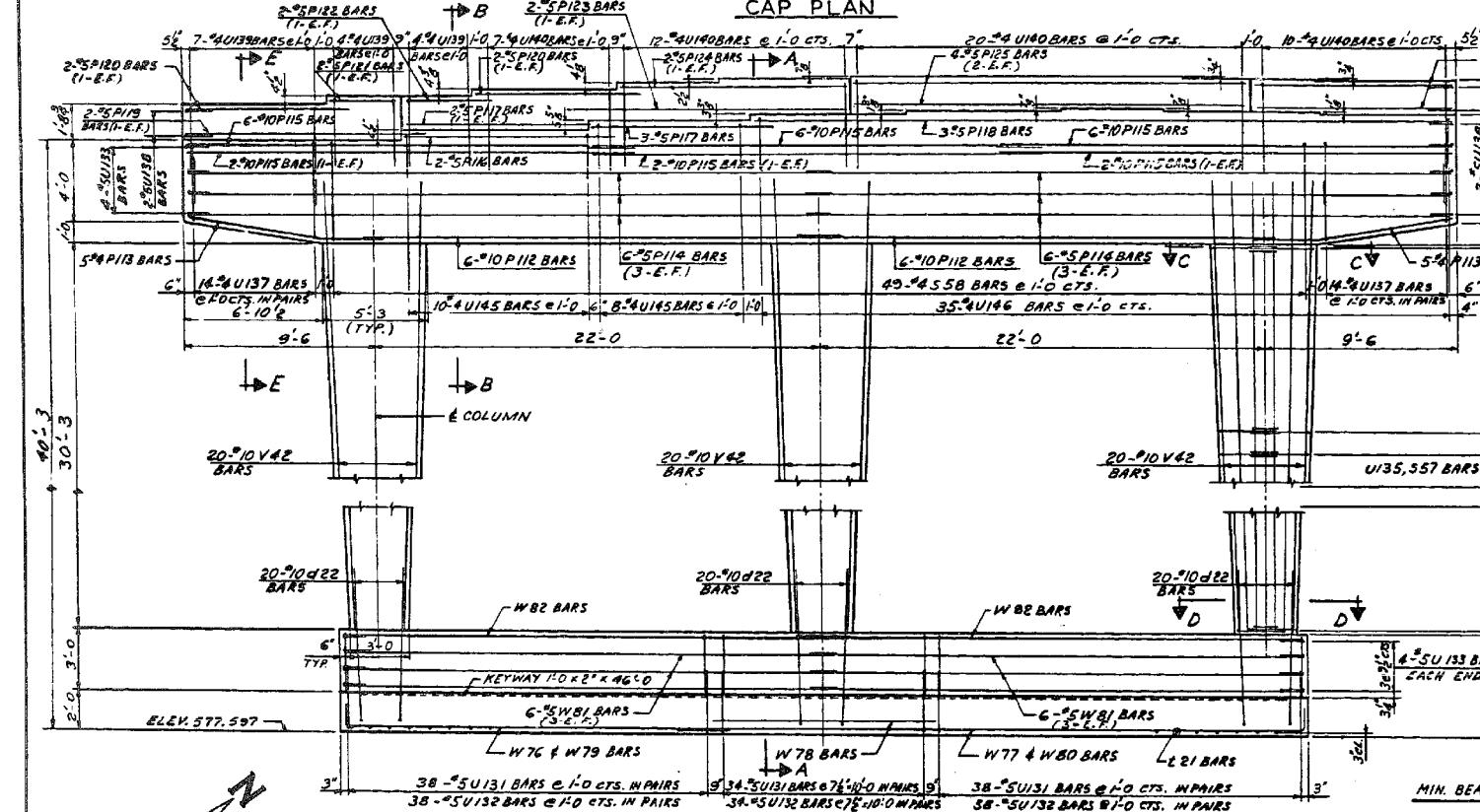
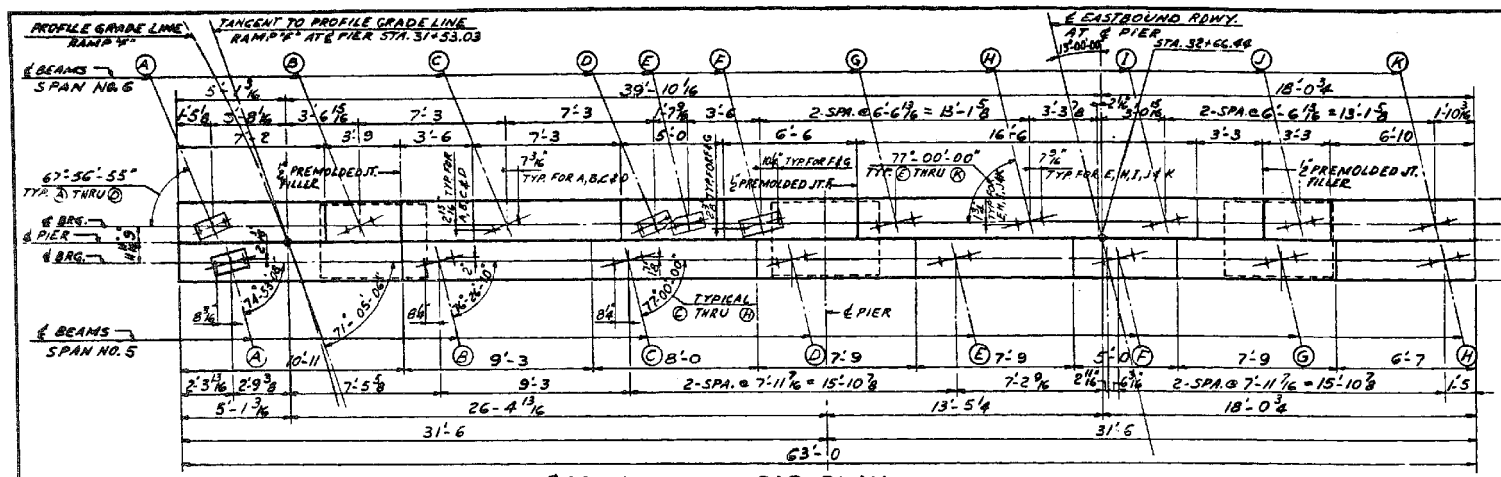
PIER NO. 5 E.B. - QUANTITIES		
CLASS X CONCRETE	CUYDS.	.63
REINFORCEMENT BARS	LBS.	25,555
CLASS A EXCAVATION	CUYDS.	283
CLASS B EXCAVATION	CUYDS.	92



ILLINOIS DIVISION OF HIGHWAYS	
SOUTHWEST EXPRESSWAY	
F.A. RT. 133	
LAWDALE AVE. STRUCTURE OVER CHICAGO SANITARY AND SHIP CANAL	
SECTION 0707-626B	
PIER NO. 5 EASTBOUND	
DESIGNED ST:PK	SCALE: HORIZ. 1"=10'
REVIEWED C.W.W.	DATE: 8-5-63
DRAWN BY E.M.	
CHECKED BY L.D.B.	

FOR INFORMATION ONLY

F.A.P. RTE.	SECTION	COUNTY	TOTAL SHEETS	SHEET NO.
373	2013-038B-R	COOK	821	700
				CONTRACT NO. 60J16
ILLINOIS FED. AID PROJECT				



BEARING SEAT ELEVATIONS AT BEAMS			
SPAN NO. 6		SPAN NO. 5	
A	619.581	A	617.847
B	619.960	B	618.387
C	620.329	C	618.860
D	620.677	D	619.138
E	620.677	E	619.252
F	620.890	F	619.326
G	620.961	G	619.255
H	620.961	H	619.164
I	620.961		
J	620.898		
K	620.835		

Revision: 10-9-63: Changed class from 159.5 cu yds to 163 cu yds. C.L.C.



FILE NAME =	USER NAME = tjenicke	DESIGNED - FSM	REVISIONS
0160486.60J16.X10.exist.pier5.dgn		CHECKED - RMM	REVISIONS
		DRAWN - FSM	REVISIONS
		CHECKED - RMM	REVISIONS

STATE OF ILLINOIS
DEPARTMENT OF TRANSPORTATION

EXISTING PLANS PIER 5
STRUCTURE NO. 016-0486

SHEET NO. SGX10 OF SGX48 SHEETS

X:\100005\10093\Eng_Docs_Phase_1\11\SN_016_0486_0487_1st_Ave.cover_Consol\Final\Final_0486\0160486_60J16.X10.exist.pier5.dgn 2:54:37 PM 6/23/2014