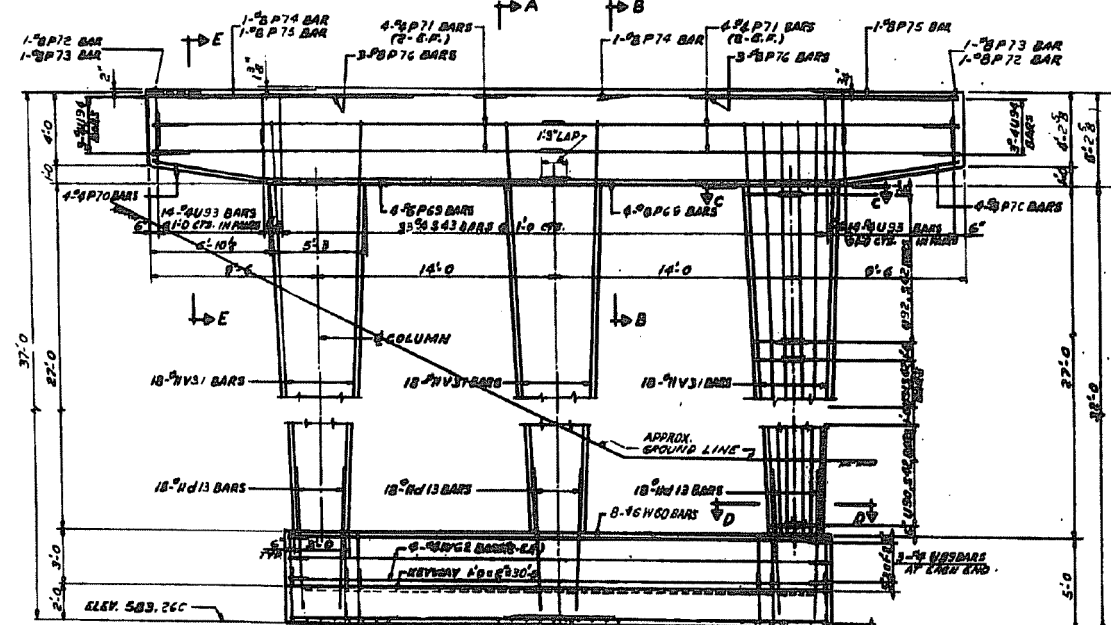


CAP PLAN

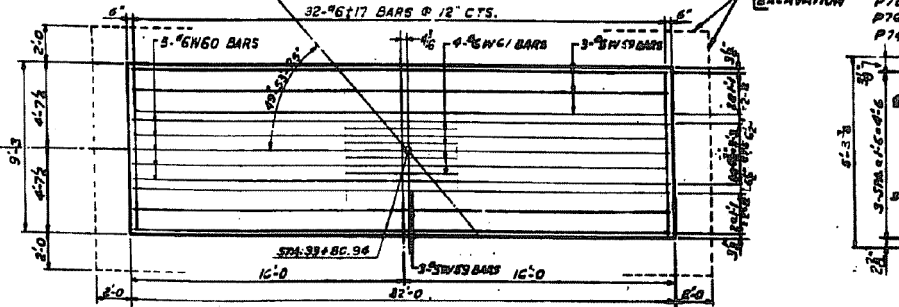
E.F. EACH FACE



ELEVATION

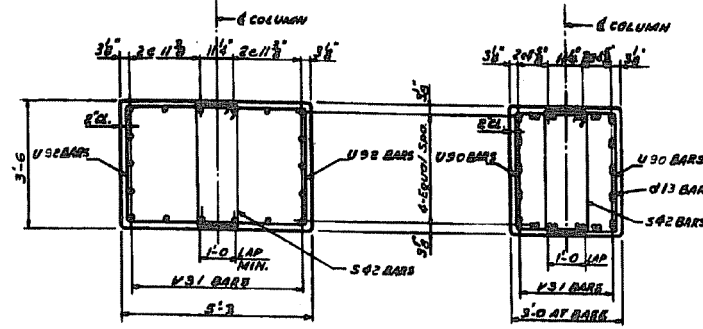


LEADING



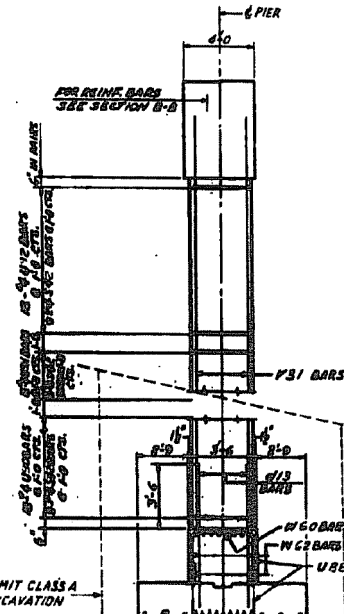
FOOTING PLAN

NOTE: BOTT. REINF. SHOWN FOR OTHER REINF. SEE SECT. A-A & ELEVATION.



SECTION C-C
SCALE: 1/4"=1'-0"

SECTION D-D
SCALE: 1/2"=1'-0"

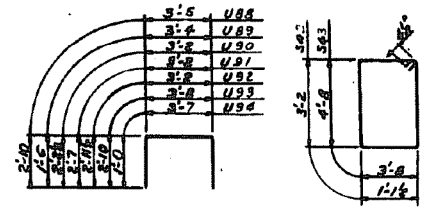


SECTION A-A
SCALE: 1/2"=1'-0"

SECTION B-B
SCALE: 1/4"=1'-0"

BEARING SEAT ELEVATIONS AT BEAMS			
SPAN NO. 7		SPAN NO. 6	
F	620.430	B1	620.260
G	620.540	B2	620.430
H	620.540	B3	620.540
I	620.540	B4	620.540
J	620.540	B5	620.540
K	620.480	B6	620.480

MIN. BEARINGS 5,000 LBS/FT²

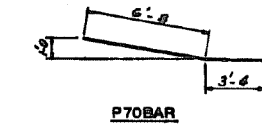


U85 THRU U84 BAR S42, S43 BAR

FA	SECTION	EXPRESSWAY	TOTAL SHEETS	SHEET NO.
133	0707-626B	SOUTHWEST	95	49

BILL OF REINFORCEMENT				
BAR NO.	SIZE	LENGTH	SHAPE	
d13	54	11	7-2	
P69	8	6	15-3	
P70	8	4	10-0	
P71	8	4	23-9	
P72	2	8	18-5	
P73	2	8	29-11	
P74	2	8	18-5	
P75	2	8	29-11	
P76	6	8	11-0	
S42	81	4	9-4	
S43	33	4	17-5	
L17	32	6	8-11	
U88	66	5	9-1	
U89	6	4	5-4	
U90	54	4	7-7	
U91	54	4	8-4	
U92	54	4	9-1	
U93	38	4	9-4	
U94	6	4	5-7	
W59	6	3	31-8	
W60	18	6	31-8	
W61	4	6	6-0	
W62	4	6	31-8	

PIER NO. 7 EAST BOUND		
CLASS X CONCRETE	CUYDS	114
REINFORCING BARS	LBS	16,160
CLASS A EXCAVATION	CUYDS	358



AS AWARDED
ILLINOIS DIVISION OF HIGHWAYS
SOUTHWEST EXPRESSWAY
FA. RT 133
LAWDALE AVE. STRUCTURE OVER
CHICAGO SANITARY AND SHIP CANAL
SECTION 0707-626 B
PIER NO. 7 EASTBOUND
SCALE: HORIZ. 1/4"=1'-0"
VERT. 1/8"=1'-0"
DATE: 8-5-63
DRAWN BY E.M.
CHECKED BY L.D.B.

REVISIONS	
NAME	DATE
DESIGNED SEQP	
REVIEWED CMM	

SEE SHEET 49A "AS BUILT" 12-10-63 R.P.E.

benesch
engineers · scientists · planners
Alfred Benesch & Company
205 North Michigan Avenue, Suite 2400
Chicago, Illinois 60601
312-565-0450 Job No. 10093

FILE NAME = 0160486.60J16.X12.exist.pier7.dgn
PLOT SCALE =
PLOT DATE = 6/23/2014

USER NAME = tjenicke	DESIGNED - FSM	REVISED -
	CHECKED - RMM	REVISED -
	DRAWN - FSM	REVISED -
	CHECKED - RMM	REVISED -

STATE OF ILLINOIS
DEPARTMENT OF TRANSPORTATION

EXISTING PLANS PIER 7
STRUCTURE NO. 016-0486
SHEET NO. SGX12 OF SGX48 SHEETS

FOR INFORMATION ONLY

F.A.P. RTE.	SECTION	COUNTY	TOTAL SHEETS	SHEET NO.
373	2013-038B-R	COOK	821	702
CONTRACT NO.				60J16

ILLINOIS FED. AID PROJECT

X:\100005\10093\Eng_Docs_Phase_II\SN_016_0486_0487_1st.Ave.cover_Consol\Final\Final_0486\0160486_60J16.X12.exist.pier7.dgn 2:55:04 PM 6/23/2014