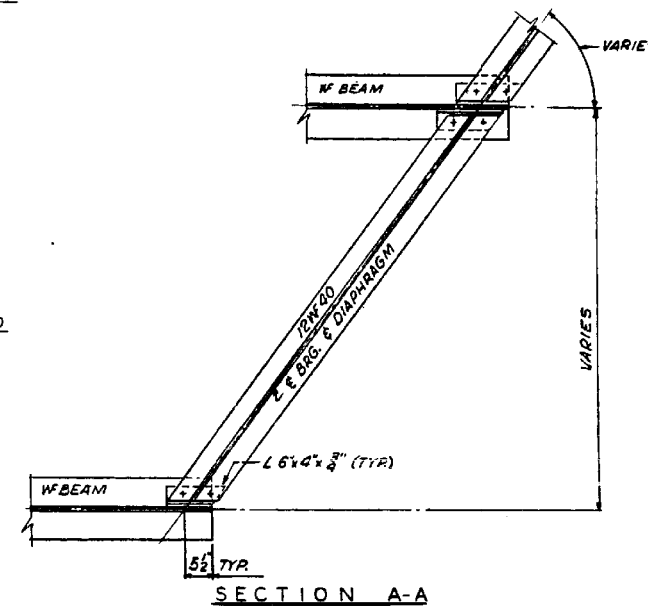
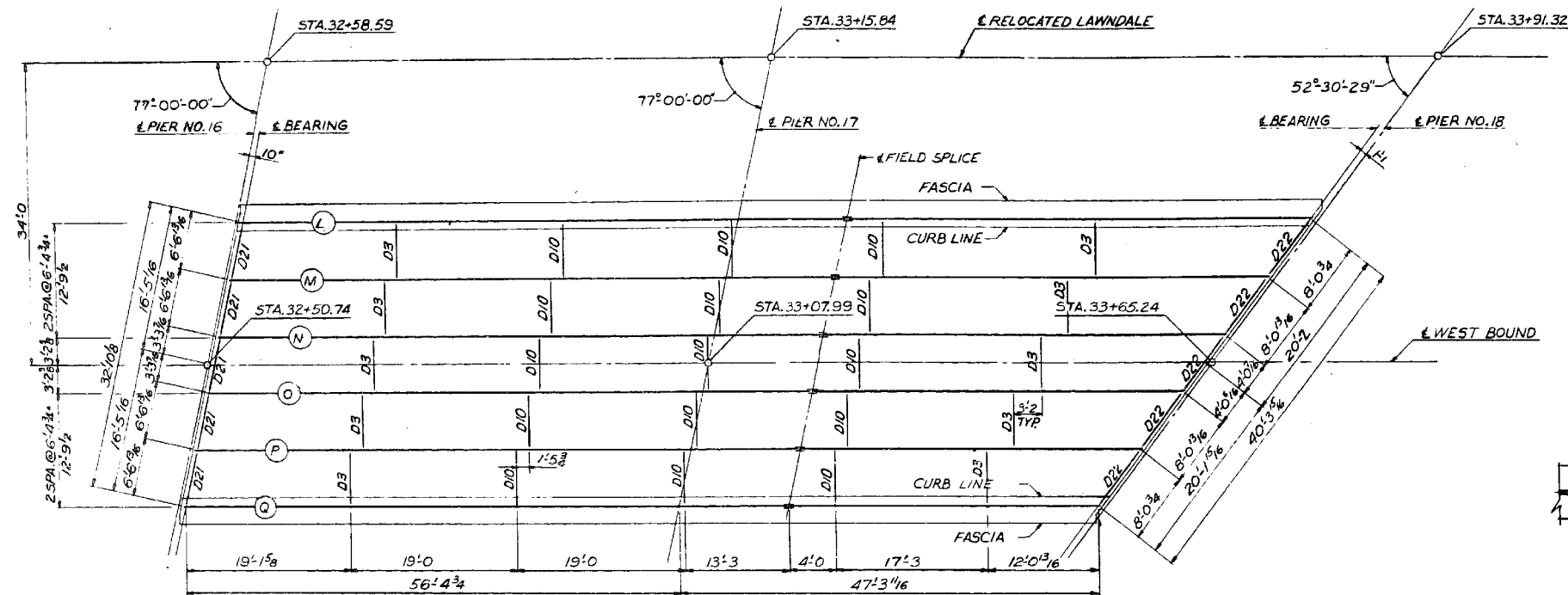
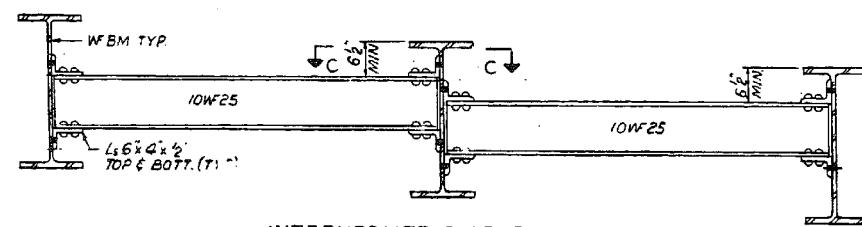


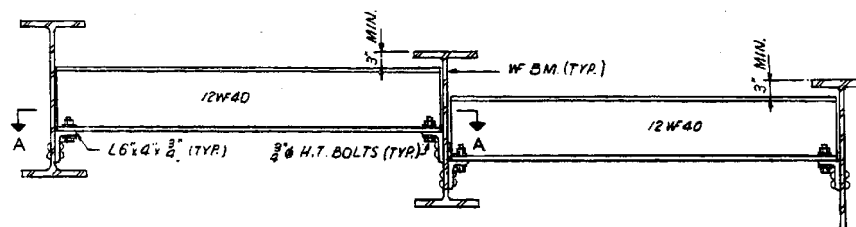
F.A. RT.	SECTION	EXPRESSWAY	TOTAL SHEETS	SHEET NO.
133	0707-626B	SOUTHWEST	95	53
STA.	TO STA.			
FED. ROAD DIST. NO. 7	ALNOM.	FED. AID PROJECT		



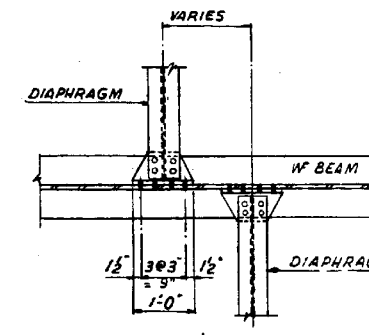
FRAMING PLAN SPAN NO. 6 & NO. 7 WEST BOUND



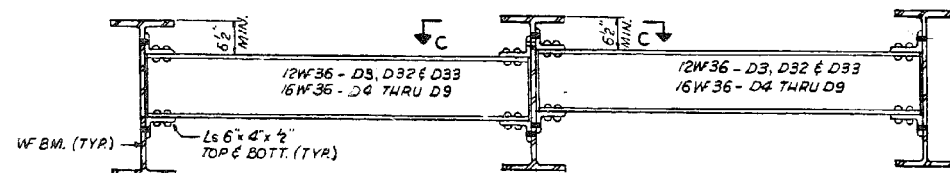
INTERMEDIATE DIAPHRAGMS D1 & D2
8-D1 & 6-D2 DIAPHRAGMS



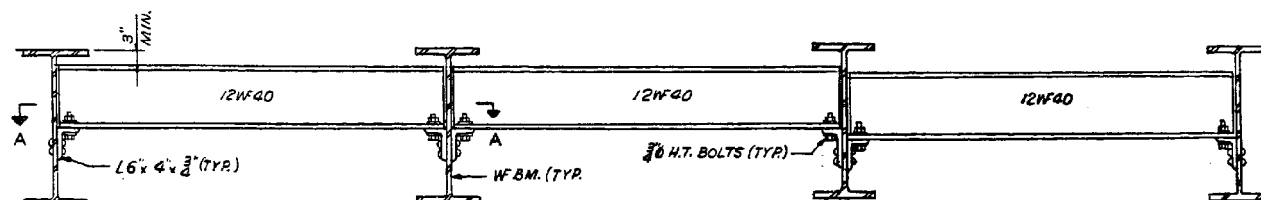
END DIAPHRAGMS D19 & D20
6-D19 & 8-D20



SECTION C-C

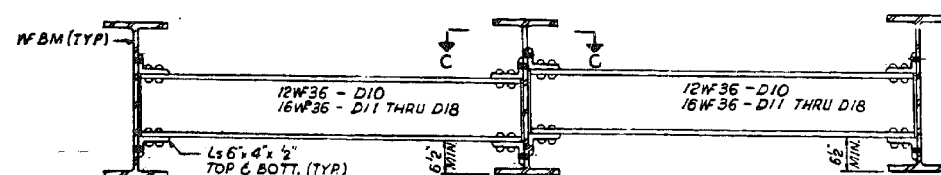


INTERMEDIATE DIAPHRAGMS D3 THRU D9 & D32, D33
20-D3, 12-D4, 8-D7. ALL OTHERS 1 EACH

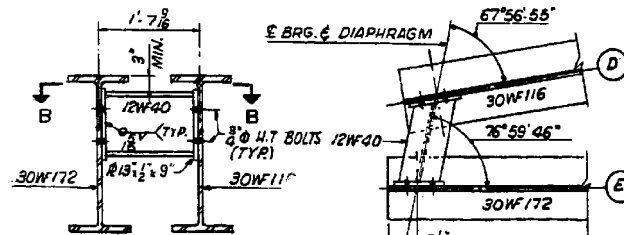


END DIAPHRAGMS D21 THRU D29
10-D21, 5-D22 & D23, 10-D24, 8-D25 ALL OTHERS 1 EACH

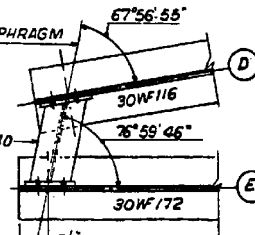
END DIAPHRAGMS D30 & D31
2-D30 & 1-D31



INTERMEDIATE DIAPHRAGMS D10 THRU D18
30-D10, 18-D11, 12-D15 ALL OTHERS 1 EACH



END DIAPHRAGM D34
1 REQ'D.



SECTION B-B

REVISIONS	
NAME	DATE
DESIGNED ST.	
REVIEWED C.W.W.	

ILLINOIS DIVISION OF HIGHWAYS	
SOUTHWEST EXPRESSWAY	
F.A. RT. 133	
LAWDALE AVE. STRUCTURE OVER CHICAGO SANITARY AND SHIP CANAL	
SECTION 0707 - 626B	
FRAMING PLAN SPAN 6 AND 7 W.B.	
SCALE: HORIZ. DATE 8-5-63	DRAWN BY D.U. CHECKED BY L.D.B.

benesch
engineers · scientists · planners

Alfred Benesch & Company
205 North Michigan Avenue, Suite 2400
Chicago, Illinois 60601
312-565-0450 Job No. 10093

FILE NAME =
0160486.60J16.X19.exist.diaphragms.dgn

USER NAME = tjenicke
PLOT SCALE =
PLOT DATE = 6/23/2014

DESIGNED - FSM
CHECKED - RMM
DRAWN - FSM
CHECKED - RMM

REVISED -
REVISED -
REVISED -
REVISED -

STATE OF ILLINOIS
DEPARTMENT OF TRANSPORTATION

EXISTING PLANS DIAPHRAGM DETAILS SPANS 1-2 & 6-7
STRUCTURE NO. 016-0486

SHEET NO. SGX19 OF SGX48 SHEETS

FOR INFORMATION ONLY

F.A.P. RT.	SECTION	COUNTY	TOTAL SHEETS	SHEET NO.
373	2013-038B-R	COOK	821	709
CONTRACT NO.			60J16	
ILLINOIS FED. AID PROJECT				

X:\1000005\10093\Eng_Docs_Phase_1\11\SN_016_0486_0487_1st_Ave_cover_Conc1\Final\Final_0486_0160486_60J16.X19.exist.diaphragms.dgn 2:57:01 PM 6/23/2014