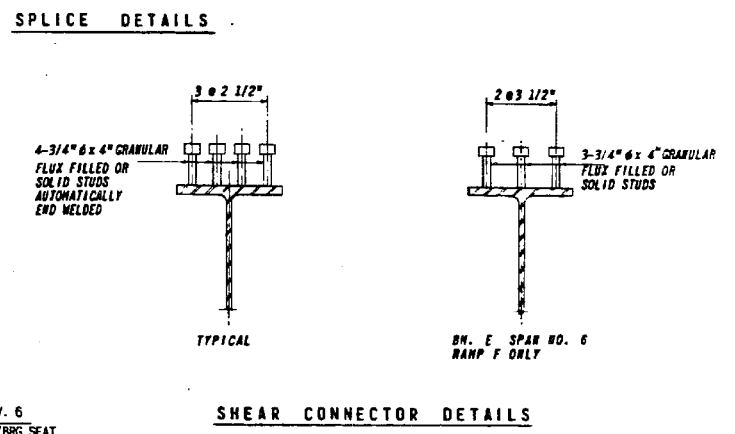
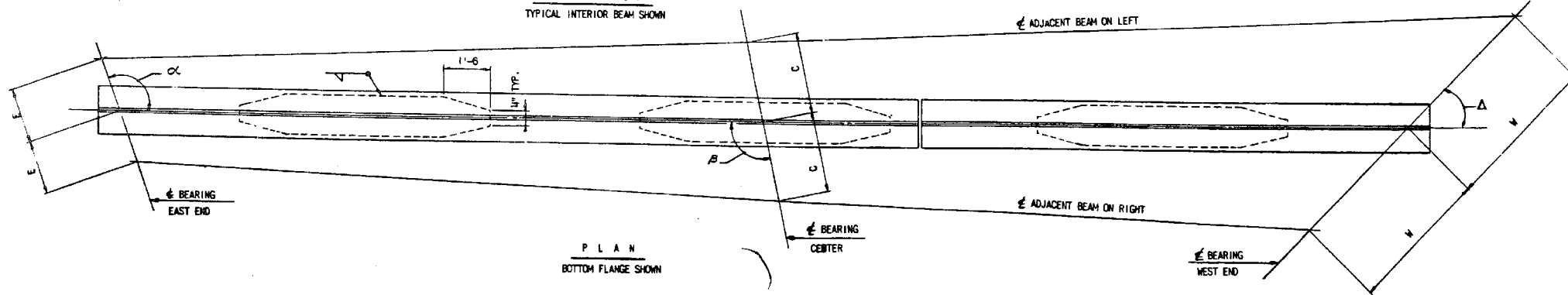
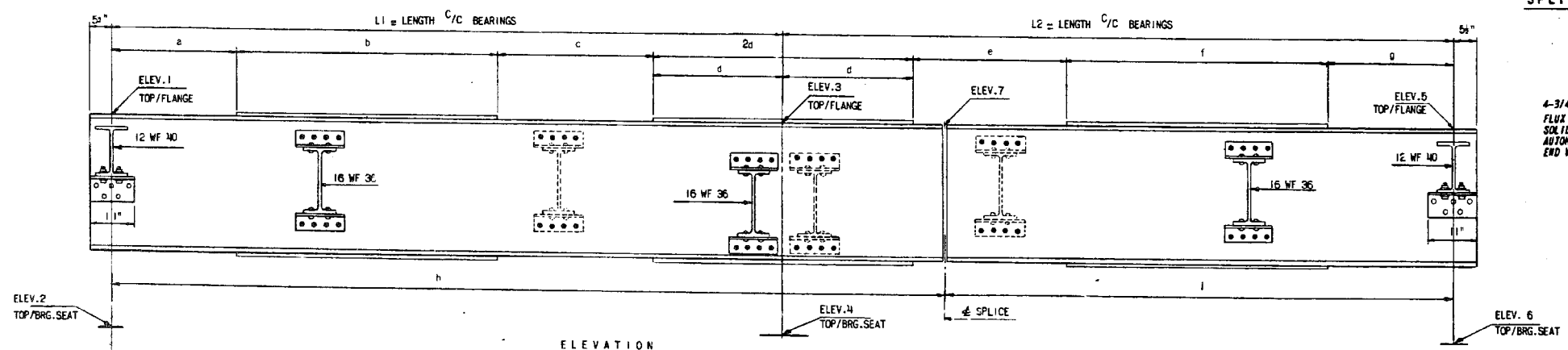
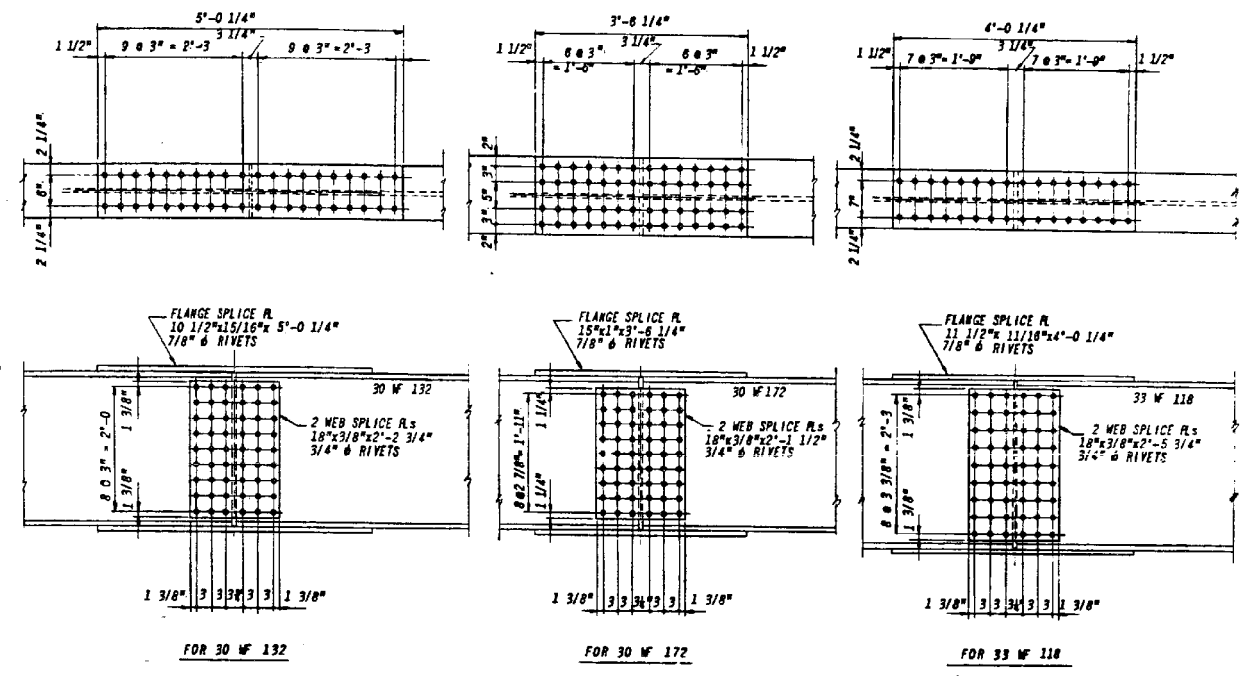
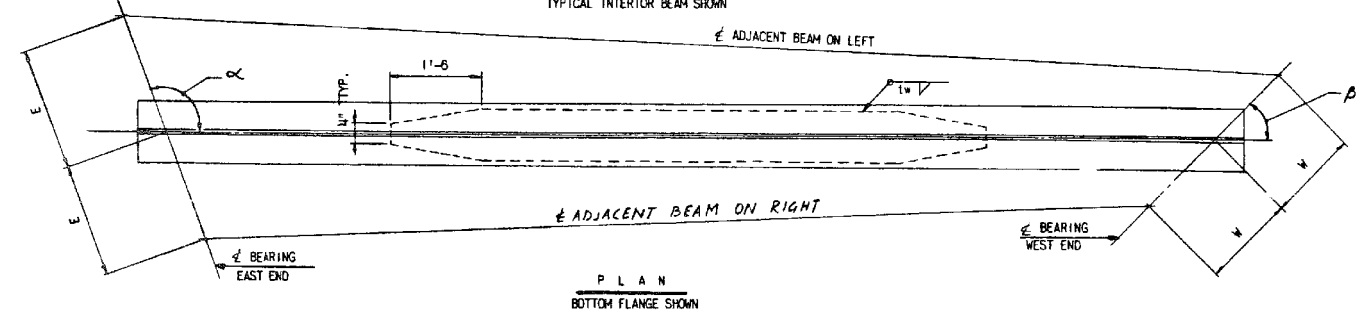
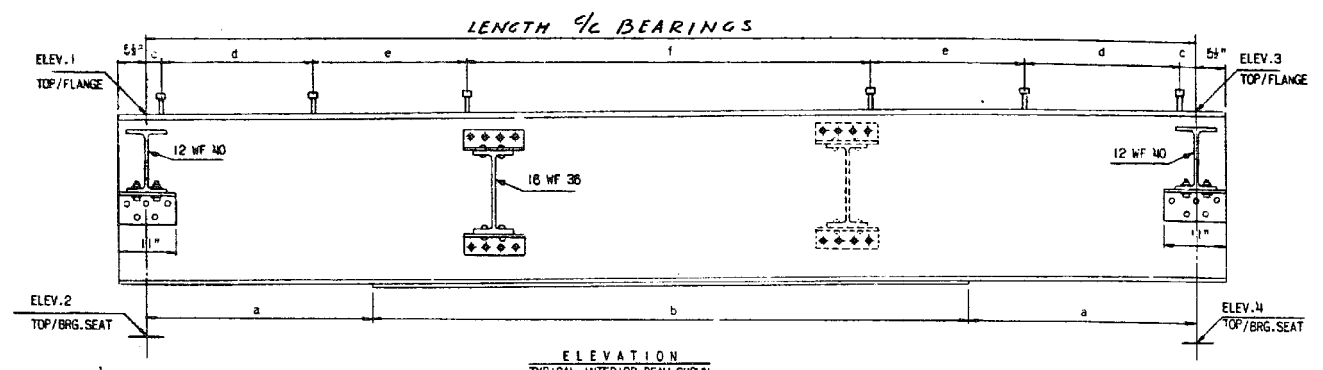


F.A. RTE.	SECTION	EXPRESSWAYS	TOTAL SHEETS	SHEET NO.
133	0707-626B	SOUTHWEST	95	57
STA.		TO STA.		
FED. ROAD DIST. NO. 7 ILLINOIS FED. AID PROJECT				



NOTE: SEE SHEET "ELECTRICAL DETAILS" FOR BRACKET SUPPORTS FOR CONDUITS ATTACHED TO STRUCTURE.

REVISIONS		ILLINOIS DIVISION OF HIGHWAYS	
NAME	DATE	SOUTHWEST EXPRESSWAY	
		F.A. RT. 133	
		LAWDALE AVE. STRUCTURE OVER CHICAGO SANITARY AND SHIP CANAL	
		SECTION 0707 - 626B	
		BEAM DETAILS	
DESIGNED ST-PK	SCALE: HORIZ. VERT.	DRAWN BY J.S.	
REVIEWED C.W.W.	DATE 8-5-63	CHECKED BY LDB	

benesch
engineers · scientists · planners

Alfred Benesch & Company
205 North Michigan Avenue, Suite 2400
Chicago, Illinois 60601
312-565-0450 Job No. 10093

FILE NAME = 0160486.60J16.X21.exist.beamdet.dgn

USER NAME = tjenicke
PLOT SCALE =
PLOT DATE = 6/23/2014

DESIGNED - FSM
CHECKED - RMM
DRAWN - FSM
CHECKED - RMM

REVISED -
REVISED -
REVISED -
REVISED -

STATE OF ILLINOIS
DEPARTMENT OF TRANSPORTATION

EXISTING PLANS BEAM DETAILS
STRUCTURE NO. 016-0486

SHEET NO. SGX21 OF SGX48 SHEETS

FOR INFORMATION ONLY

F.A.P. RTE.	SECTION	COUNTY	TOTAL SHEETS	SHEET NO.
373	2013-038B-R	COOK	821	711
CONTRACT NO.			60J16	
ILLINOIS FED. AID PROJECT				

X:\1000005\100093\Eng_Docs_Phase_1\11\SN_016_0486_0487_1st_Ave.cover_Canal\Final\Final_0486\0160486_60J16.X21.exist.beamdet.dgn 2:57:05 PM 6/23/2014