

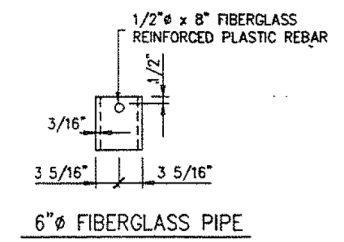
ROUTE NO.	SECTION	COUNTY	TOTAL SHEETS	SHEET NO.
IL 171	**	COOK	383	256
ILLINOIS			FED. AID PROJECT	

\*\* SECTION 0707-626 B (BR)

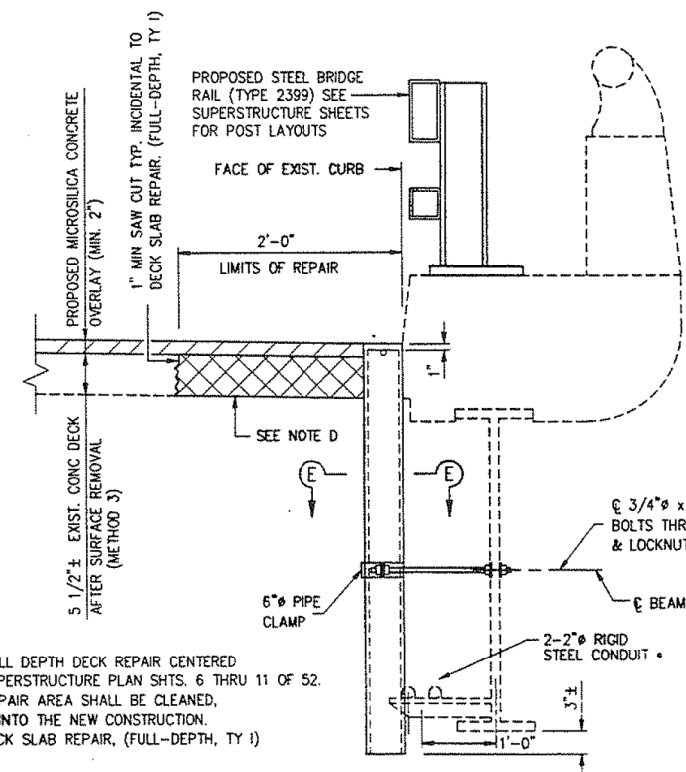
TOTAL BILL OF MATERIALS

ITEM	UNIT	TOTAL
STEEL BRIDGE RAIL	LIN FT	568
REINFORCEMENT BARS EPOXY COATED	POUNDS	14600
DECK SLAB REPAIR (FULL DEPTH, TYPE I)	SQ YD	156
BRIDGE DECK MICROSILOA CONCRETE OVERLAY (SPECIAL)	SQ YD	6688
JACK AND REMOVE EXIST BEARINGS	EACH	122
CONCRETE REMOVAL	CU YD	90
CLASS X CONCRETE SUPERSTRUCTURE	CU YD	93
FURNISHING & ERECTING STRUCTURAL STEEL	POUNDS	29160
BITUMINOUS CONCRETE SURFACE REMOVAL (ASBESTOS)	SQ YD	6998
BAR SPLICERS	EACH	184
EPOXY CRACK SEALING	LIN FT	86
FORMED CONCRETE REPAIR (DEPTH EQUAL TO OR LESS THAN 5")	SQ FT	2977
CONCRETE BRIDGE DECK SURFACE REMOVAL (METHOD 3)	SQ YD	6688
ELASTOMERIC BEARING ASSEMBLY, TYPE I	EACH	75
ELASTOMERIC BEARING ASSEMBLY, TYPE II	EACH	37
FLOOR DRAINS	EACH	99
BRIDGE SEAT SEALER	SQ FT	1860
NEOPRENE EXPANSION JOINT 2"	LIN FT	237
NEOPRENE EXPANSION JOINT 2 1/2"	LIN FT	46
NEOPRENE EXPANSION JOINT 4"	LIN FT	142
PREFORMED JOINT SEAL 1 3/4"	LIN FT	32
PREFORMED JOINT SEAL 2 1/2"	LIN FT	95
FORMED CONCRETE CURB REPAIR (VARIES)	LIN FT	611
FORMED CONCRETE REPAIR (DEPTH GREATER THAN 5")	SQ FT	6

\*\*\* 311 SQ FT SUPER  
2660 SQ FT SUB

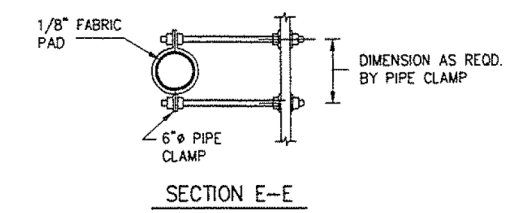
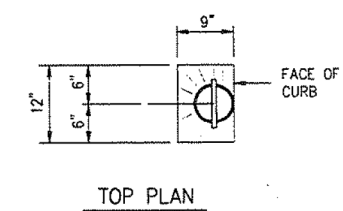


NOTE: FIBERGLASS PIPE SHALL CONFORM TO ASTM: D2996, WITH SHORT-TIME RUPTURE STRENGTH HOOP TENSILE STRESS OF 30,000 PSI MINIMUM. THE SURFACE OF THE FIBERGLASS PIPE SHALL BE FREE OF BOND INHIBITING AGENTS.



NOTE D  
DOUBLE HATCH AREA INDICATES FULL DEPTH DECK REPAIR CENTERED AT DECK DRAIN LOCATIONS SEE SUPERSTRUCTURE PLAN SHTS. 6 THRU 11 OF 52. REINFORCEMENT EXTENDING INTO REPAIR AREA SHALL BE CLEANED, STRAIGHTENED AND INCORPORATED INTO THE NEW CONSTRUCTION. COST SHALL BE INCIDENTAL TO "DECK SLAB REPAIR, (FULL-DEPTH, TY I)" SEE SPECIAL PROVISIONS

\* THE CONTRACTOR SHALL RELOCATE ACTIVE CONDUITS AND REMOVE PORTIONS OF INACTIVE CONDUITS THAT ARE IN CONFLICT WITH THE NEW FLOOR DRAINS. SEE SHEETS 1 & 2 OF 52 FOR THE PLAN LOCATIONS OF EXISTING CONDUITS. THE ENGINEER SHALL PROVIDE INFORMATION ON WHICH CONDUITS ARE ACTIVE AND WHICH ARE INACTIVE. COST FOR THIS WORK SHALL BE INCIDENTAL TO FLOOR DRAINS (EACH).



12/03/93 03:01:13 P.M. 67D.TLS.DWG

1993  
EXAMINED  
ENGINEER OF STRUCTURAL SERVICES  
PASSED  
ENGINEER OF BRIDGE AND STRUCTURES  
APPROVED  
DIRECTOR OF HIGHWAYS

ILLINOIS DEPARTMENT OF TRANSPORTATION  
BILL OF MATERIAL & MISC. DETAILS  
BRIDGE REPAIRS  
1ST AVE (IL 171) S.N. 016-0486 & 016-0487  
OVER CHICAGO SANITARY & SHIP CANAL  
AND RAMP "E"  
SECTION 0707-626 B (BR)  
F.A.U. RT. 1505  
COOK CO. IL  
STA. 30+72.59  
STA. 35+12.88

FILE NAME =	USER NAME = tjenicke	DESIGNED - FSM	REVISED -
0160486.60J16.X33.exist.93.repairs.dgn	PLOT SCALE =	CHECKED - RMM	REVISED -
	PLOT DATE = 6/23/2014	DRAWN - FSM	REVISED -
		CHECKED - RMM	REVISED -

FOR INFORMATION ONLY

F.A.P. RTE.	SECTION	COUNTY	TOTAL SHEETS	SHEET NO.
373	2013-038B-R	COOK	821	723
ILLINOIS			CONTRACT NO. 60J16	
ILLINOIS FED. AID PROJECT				

X:\100005\10093\Eng\_Docs\_Phase\_II\SN\_016\_0486\_0487\_1st\_Ave\_cover\_Conc\Final\Final\_0486\_0160486\_60J16.X33.exist.93.repairs.dgn 2:59:18 PM 6/23/2014