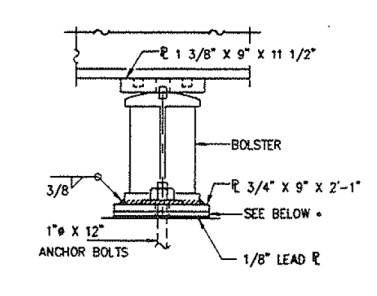
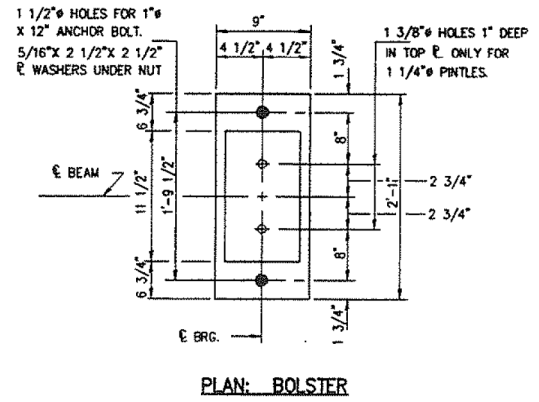


ROUTE NO.	SECTION	COUNTY	TOTAL SHEETS	SHEET NO.
IL 171	**	COOK	503	202
ILLINOIS			FED. AID PROJECT	

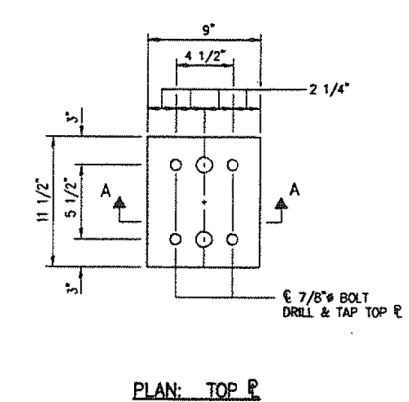
**SECTION 0707-626B (BR)



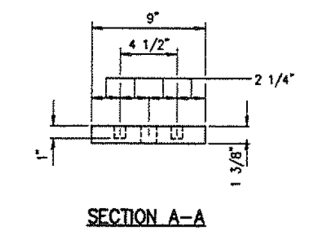
PIER 6: EAST & WEST BEARINGS
 SHIMS:
 11/16" x 9" x 2'-1" @ PIER 6 EAST BEAM A
 1/4" x 9" x 2'-1" @ PIER 6 WEST BEAM E



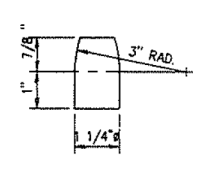
PLAN: BOLSTER



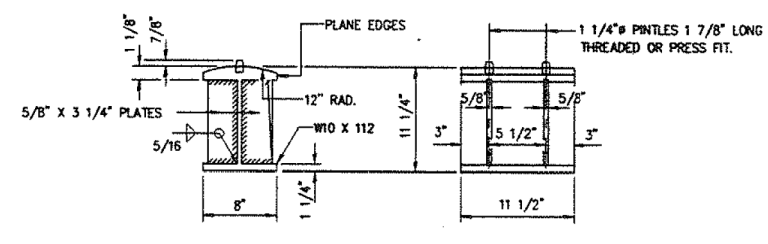
PLAN: TOP P



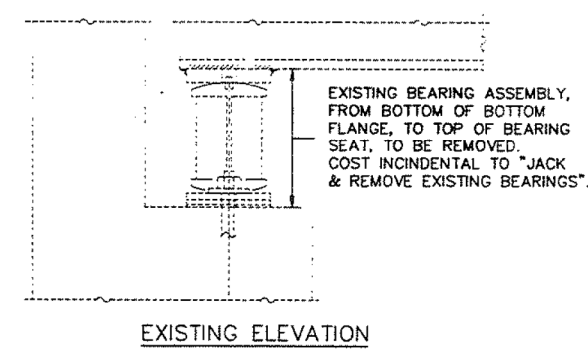
SECTION A-A



DETAIL OF PINTLE



DETAIL OF BOLSTER AT PIER 6: EAST AND WEST BEARINGS



EXISTING ELEVATION

EXISTING BEARING ASSEMBLY, FROM BOTTOM OF BOTTOM FLANGE, TO TOP OF BEARING SEAT, TO BE REMOVED. COST INCIDENTAL TO "JACK & REMOVE EXISTING BEARINGS".

NOTES: DIAPHRAGM REMOVAL AND REPLACEMENT MAY BE REQUIRED TO FACILITATE DRILLING HOLES IN THE BOTTOM FLANGE FOR BEARING ATTACHMENT. COST IS INCIDENTAL TO "FURNISHING AND ERECTING STRUCTURAL STEEL".
 NEW STEEL EXTENSIONS, SIDE RETAINERS, LEAD PLATES, CONNECTION BOLTS AND ANCHOR BOLTS ARE INCLUDED IN "FURNISHING AND ERECTING STRUCTURAL STEEL".
 SEE SHEET 52 OF 52 FOR ANCHOR BOLT INSTALLATION.
 BEFORE INSTALLING THE NEW BEARING, THE TOP PLATE OF THE EXISTING BEARING ASSEMBLY SHALL BE REMOVED FROM THE BOTTOM FLANGE USING THE AIR-ARC METHOD. GRIND SMOOTH ALL WELD MATERIAL REMAINING ON THE BOTTOM FLANGE. BURN EXISTING ANCHOR BOLTS FLUSH WITH EXISTING CONCRETE SURFACE. GRIND EXISTING ANCHOR BOLT SMOOTH AND SEAL WITH EPOXY. COST IS INCIDENTAL TO FURNISHING AND ERECTING STRUCTURAL STEEL.
 TRAFFIC SHALL BE REMOVED FROM THE PORTION OF THE STRUCTURE TO BE JACKED PRIOR TO COMMENCING JACKING OPERATIONS. TRAFFIC SHALL BE KEPT OFF THAT PORTION OF THE STRUCTURE DURING THE ENTIRE BEARING REPLACEMENT OPERATION. DIFFERENTIAL JACKING HEIGHT NOT TO EXCEED 1/8" TRANSVERSELY BETWEEN ADJACENT BEAMS OR 1/4" LONGITUDINALLY BETWEEN ADJACENT SUPPORTS.
 PRIOR TO ORDERING ANY MATERIAL, THE CONTRACTOR SHALL VERIFY IN THE FIELD ALL BEARING HEIGHT AND SHIM DIMENSIONS. SEE SUPERSTRUCTURE OVERLAY & REPAIR PLANS FOR BEAM LOCATIONS.

BILL OF MATERIAL

ITEM	UNIT	TOTAL
JACK & REMOVE EXISTING BEARINGS	EACH	10
FURNISH & ERECT STRUCTURAL STEEL	LBS	2470

12/01/03 09:03:53 A.M. RFTBRG.DWG RAMP F FIXED BEARINGS

EXAMINED	ENGINEER OF BRIDGE DESIGN
PASSED	ENGINEER OF BRIDGES AND STRUCTURES
APPROVED	DIRECTOR OF HIGHWAYS

ILLINOIS DEPARTMENT OF TRANSPORTATION
RAMP F - PIER 6
EAST AND WEST FIXED BEARINGS
 BRIDGE REPAIRS
 1ST AVE (IL 171) S.N. 016-0486 & 016-0487
 OVER SANITARY & SHIP CANAL
 AND RAMP "E"
 SECTION 0707-626B (BR)
 F.A.U. RT. 1505
 COOK CO. IL
 STA. 30+72.59
 STA. 35+12.88

FILE NAME =	USER NAME = tjenicke	DESIGNED - FSM	REVISED -
0160486.60J16.X48.exist.fixedbrg.dgn		CHECKED - RMM	REVISED -
		PLOT SCALE =	REVISED -
		DRAWN - FSM	REVISED -
		CHECKED - RMM	REVISED -
		PLOT DATE = 6/23/2014	

FOR INFORMATION ONLY

F.A.P. RTE.	SECTION	COUNTY	TOTAL SHEETS	SHEET NO.
373	2013-038B-R	COOK	821	738
ILLINOIS FED. AID PROJECT				CONTRACT NO. 60J16

X:\100005\10093\Eng_Docs_Phase_1\1\SN_016_0486_0487_1st_Ave_over_Canal\Final\Final_0486_0160486_60J16.X48.exist.fixedbrg.dgn 3:01:39 PM 6/23/2014